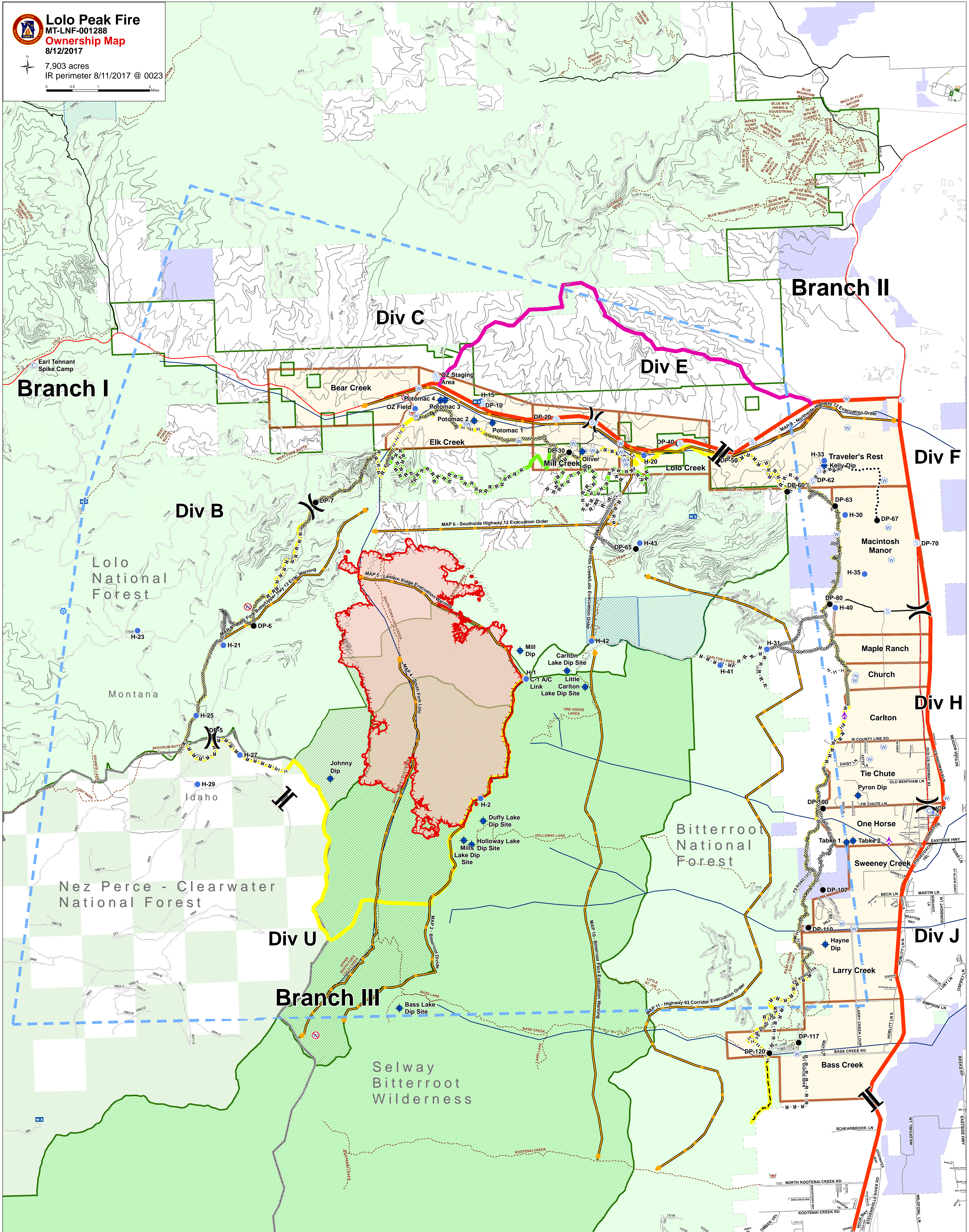


Lolo Peak Fire
 MT-LNF-001288
Ownership Map
 8/12/2017

7,903 acres
 IR perimeter 8/11/2017 @ 0023



- | | | | | | | | | |
|---------------|-----------------|---------------------|-------------------------|------------------------|--------------------------|------------------|-----------------------------------|---------------------|
| Aerial Hazard | Helispot | Mobile Weather Unit | Water Source | Completed Dozer Line | Planned Fire Line | Primary Line | Trails | Wilderness |
| Camp | ICP | Repeater | Restricted Water Source | Completed Hand Line | Planned Secondary Line | Alternate Line | Evacuation Zones | Proposed Wilderness |
| Dip Site | Internet Access | Retardant/Mud Pit | Division Break | Road as Completed Line | Aerial Retardant Drop | Contingency Line | Values at Risk Bull Trout Streams | Forest Boundary |
| Drop Point | Lookout | Staging Area | Branch Break | Uncontrolled Fire Edge | Emergency Line | Fire Perimeter | Research Natural Areas (RNA) | State Boundary |
| | Sheriff Rptr | | | TFR | Management Action Points | Proposed RNA | | |