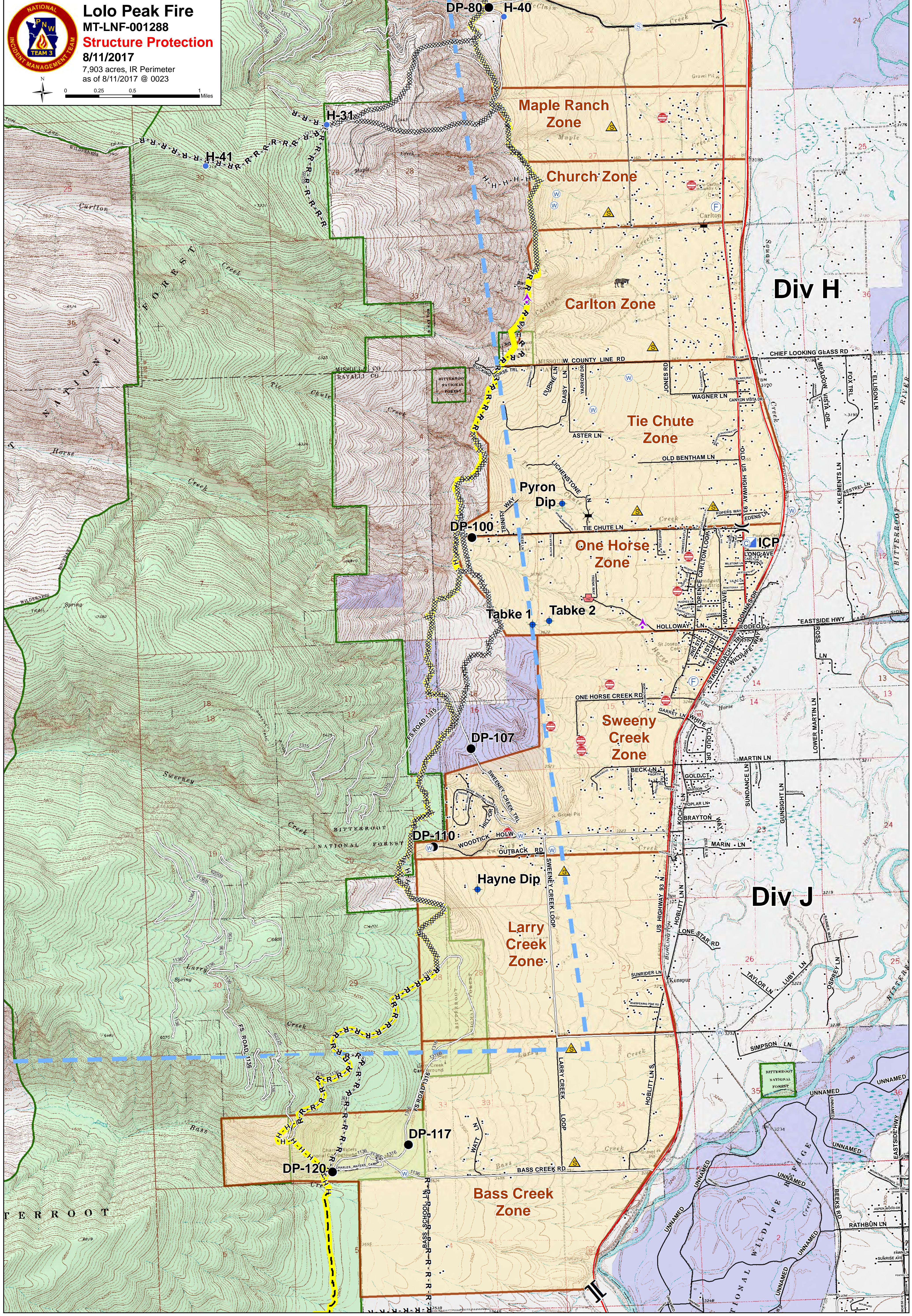
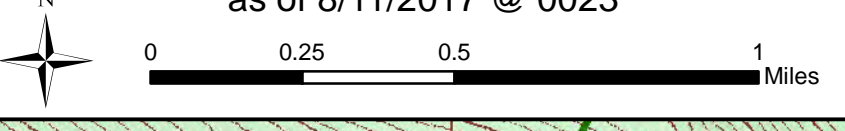




**Lolo Peak Fire**  
 MT-LNF-001288  
**Structure Protection**  
 8/11/2017  
 7,903 acres, IR Perimeter  
 as of 8/11/2017 @ 0023



- |  |                               |  |                      |  |                                  |  |                  |  |                   |  |                |  |              |
|--|-------------------------------|--|----------------------|--|----------------------------------|--|------------------|--|-------------------|--|----------------|--|--------------|
|  | Dangerous: Threatening People |  | Zoo                  |  | R - R - R Road as Completed Line |  | Structures       |  | US Forest Service |  | Drop Point     |  | Water Source |
|  | FD Emergency Staging          |  | Bridge               |  | Planned Fire Line                |  | Primary Line     |  | Aerial Hazard     |  | Helispot       |  | ICP          |
|  | Junk Yard Hazards             |  | Completed Dozer Line |  | TFR                              |  | Evacuation Zones |  | Camp              |  | Staging Area   |  | Staging Area |
|  | Safety Zone                   |  | Completed Hand Line  |  | Structure Assessment             |  | State            |  | Dip Site          |  | Division Break |  | Branch Break |