



Lolo Peak Fire

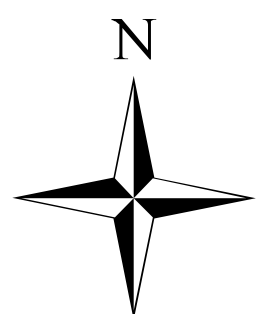
MT-LNF-001288

Briefing Map

8/12/2017

7,903 acres

IR perimeter 8/11/2017 @ 0023



0 1 2 4 Miles

Branch I

Branch II

Div C

Div E

Div F

Div B

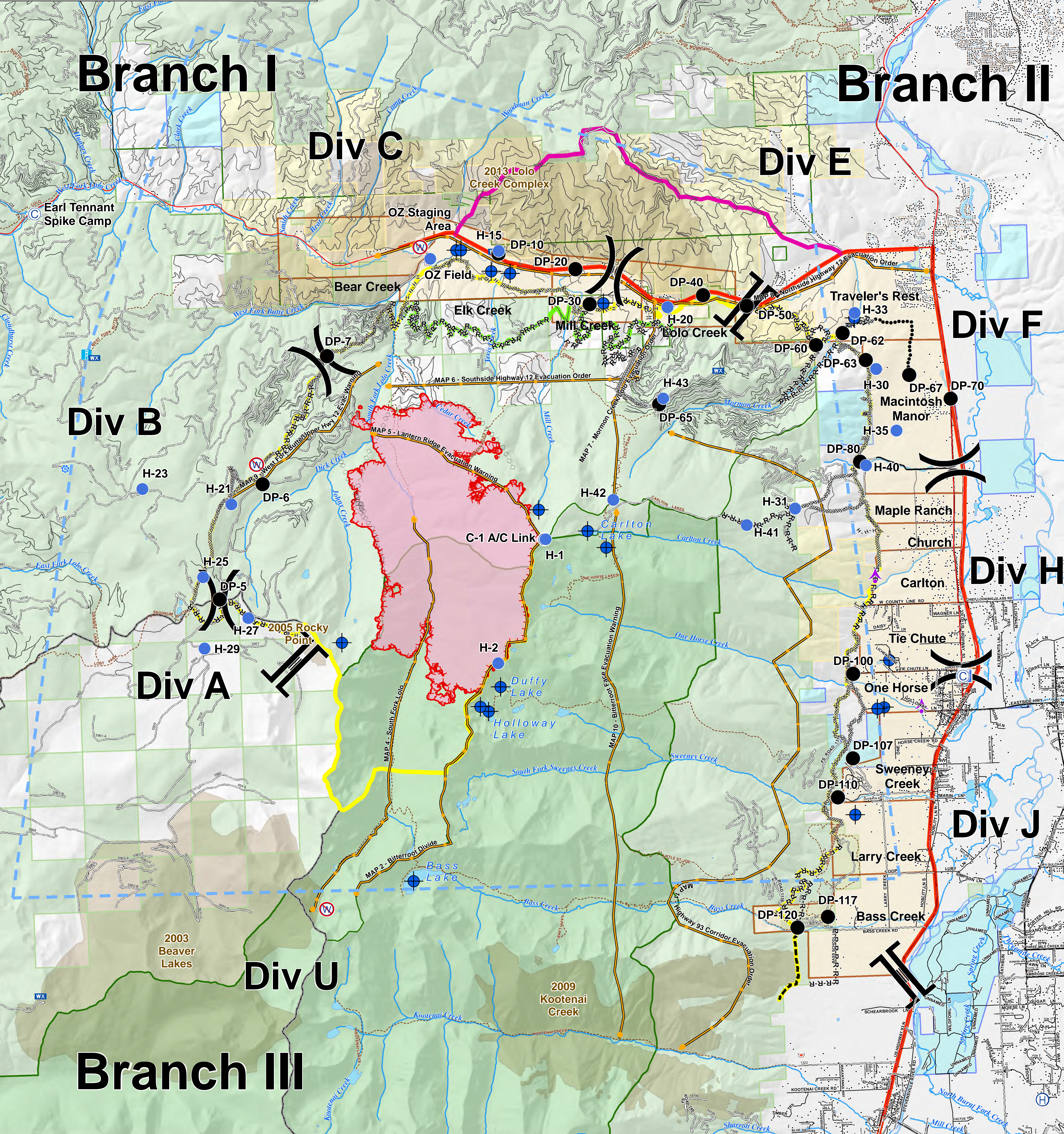
Div H

Div A

Div J

Div U

Branch III



Sheriff's Repeater	Camp	Repeater	Branch Break	Aerial Retardant Drop	Primary Line	Evacuation Zones	State
Drop Point	Helibase	Retardant/Mud Pit	Completed Dozer Line	TFR	Alternate Line	Streams	US Forest Service
Helispot	ICP	Restricted Water Source	Completed Hand Line	Management Action Points	Contingency Line	Waterbodies	Weyerhaeuser
Dip Site	Lookout	Division Break	Road as Completed Line	Uncontrolled Fire Edge	Emergency Line	States	
Aerial Hazard	Mobile Weather Unit		Planned Fire Line	Highway	Trails	Administrative Forest	
			Planned Secondary Line	County	Trails	Wilderness	
				Local Roads	Structures	Other Federal	

