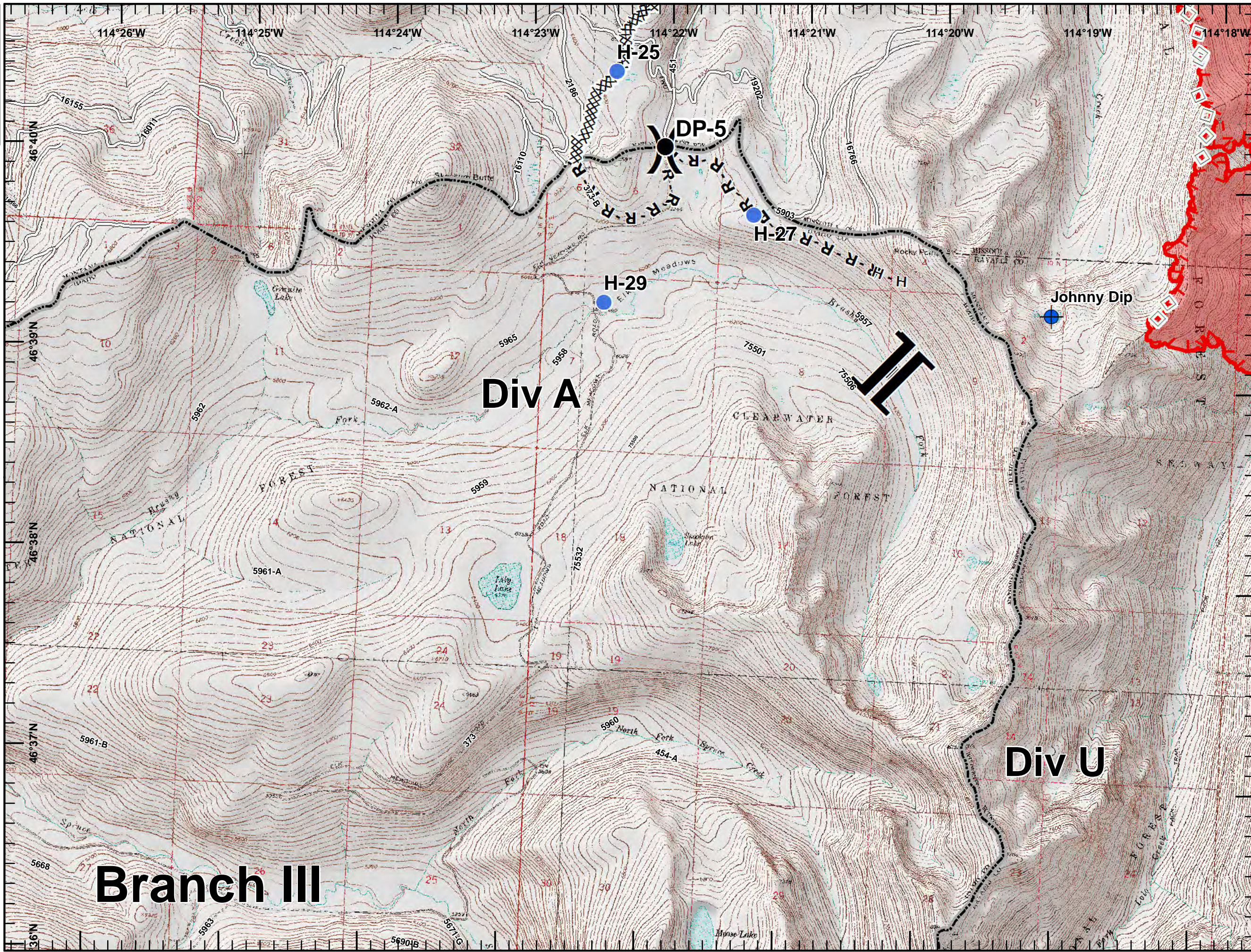




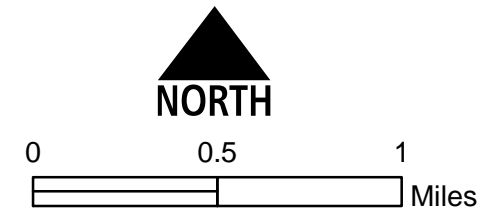
**Lolo Peak Fire**  
 MT-LNF-001288  
**IAP Map, Page 1**  
**Div A**  
 8/12/2017



7,903 acres, IR Perimeter  
 as of 8/11/2017 @ 0023



- Dip Site
- Drop Point
- Helispot
- Division Break
- Branch Break
- Completed Dozer Line
- Completed Hand Line
- Road as Completed Line
- Aerial Retardant Drop
- Uncontrolled Fire Edge
- Roads
- State Boundary
- Wildfire Daily Fire Perimeter





**Lolo Peak Fire**  
 MT-LNF-001288  
**IAP Map, Page 2**  
**Div B**  
 8/12/2017

7,903 acres, IR Perimeter  
 as of 8/11/2017 @ 0023



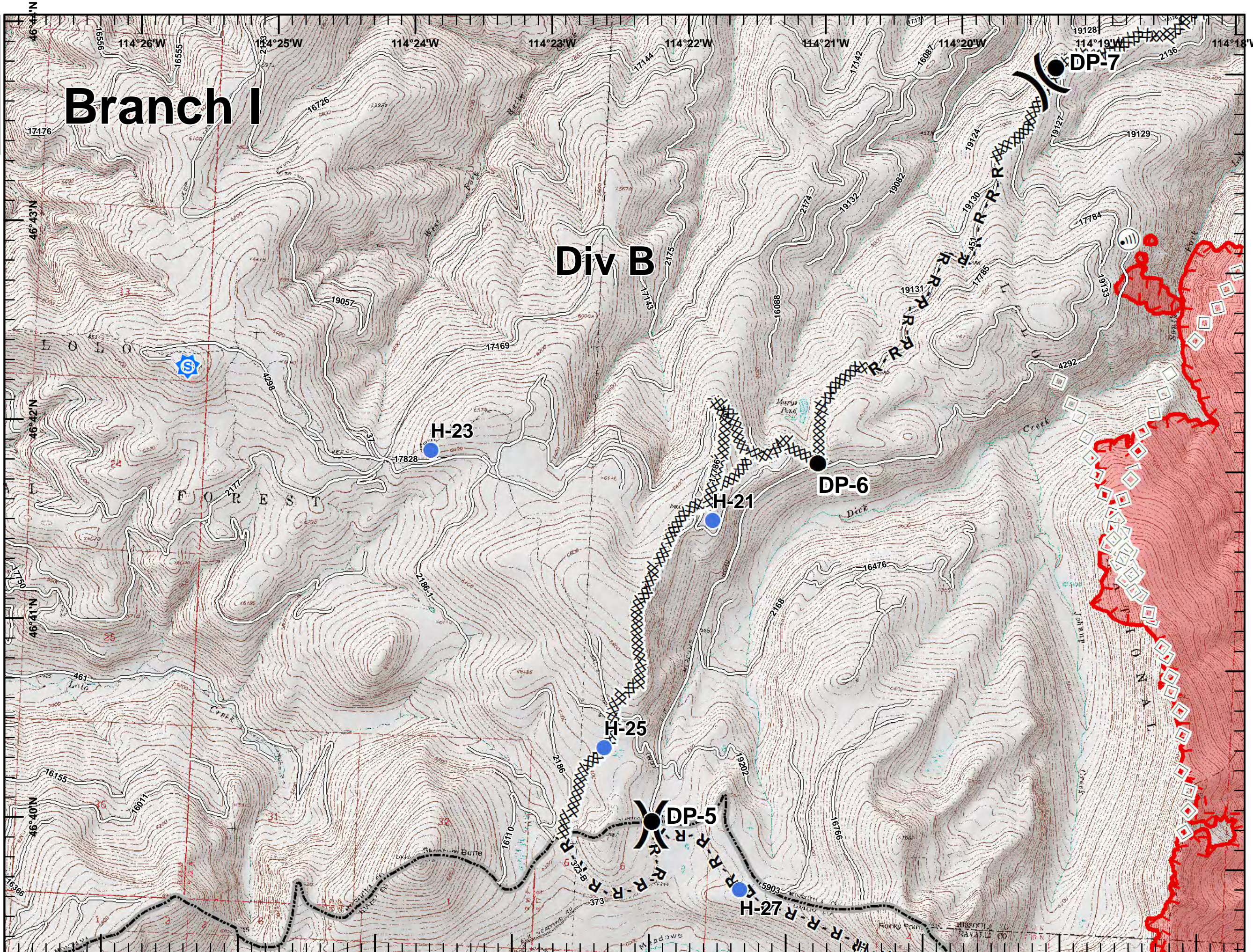
# Branch I

# Div B

- Sheriff\_Rptr
- Drop Point
- Helispot
- Internet Access
- Lookout
- Division Break
- Completed Dozer Line
- H - H Completed Hand Line
- R - R Road as Completed Line
- Aerial Retardant Drop
- Uncontrolled Fire Edge
- Roads
- State Boundary
- Wildfire Daily Fire Perimeter



0 0.5 1  
 Miles





**Lolo Peak Fire**  
 MT-LNF-001288  
 IAP Map, Page 3  
 Div C  
 8/12/2017  
 7,903 acres, IR Perimeter  
 as of 8/11/2017 @ 0023

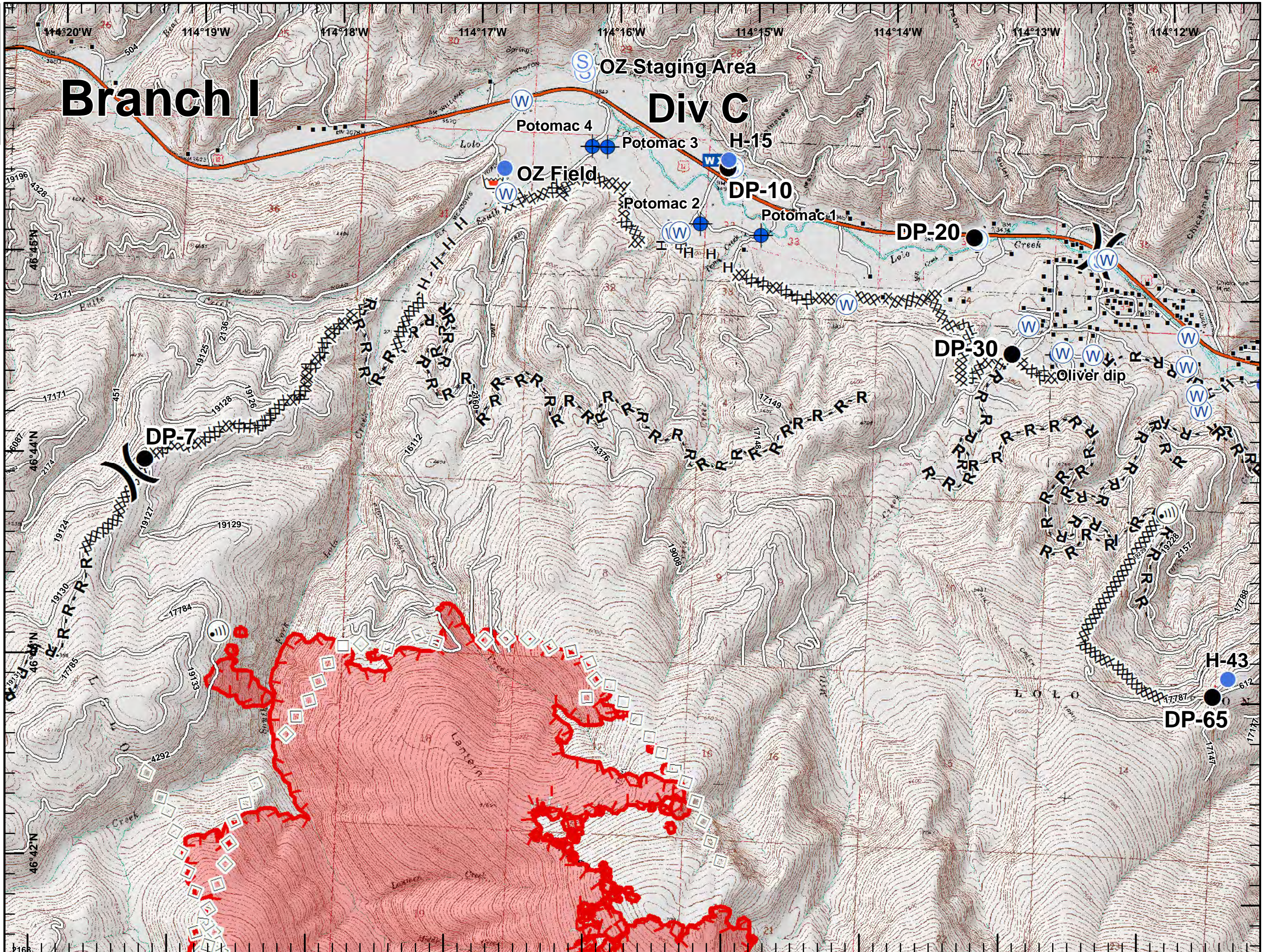
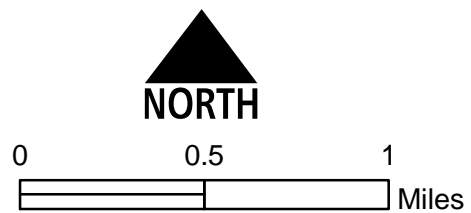


# Branch I

OZ Staging Area

Div C

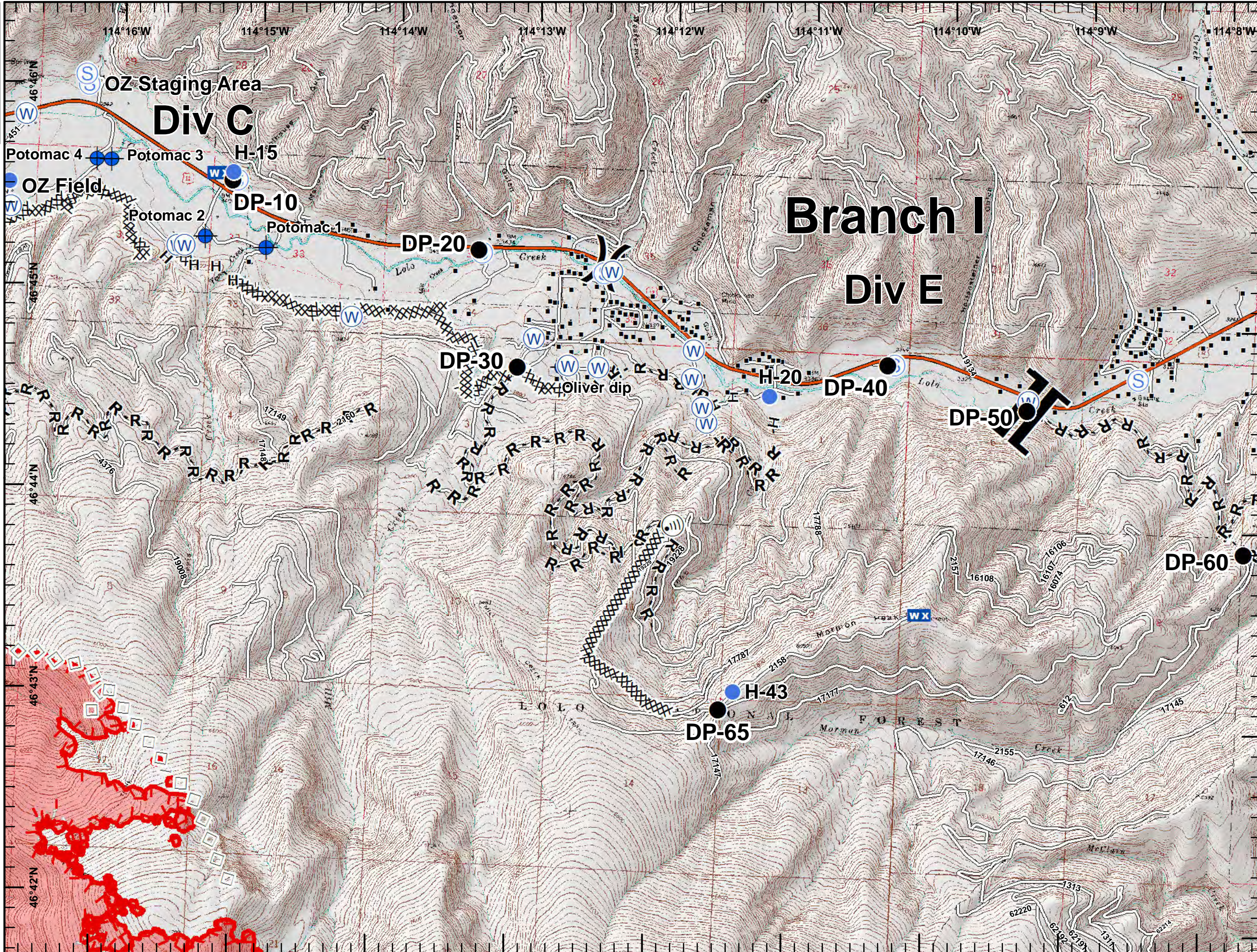
- Dip Site
- Drop Point
- Helispot
- Internet Access
- Mobile Weather Unit
- Retardant/Mud Pit
- Staging Area
- Water Source
- Division Break
- Structures
- Completed Dozer Line
- Completed Hand Line
- Road as Completed Line
- Aerial Retardant Drop
- Uncontrolled Fire Edge
- Interstate and Highways
- Roads
- State Boundary
- Wildfire Daily Fire Perimeter



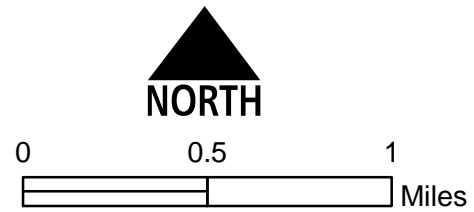


**Lolo Peak Fire**  
 MT-LNF-001288  
**IAP Map, Page 4**  
**Div E**  
 8/12/2017

7,903 acres, IR Perimeter  
 as of 8/11/2017 @ 0023



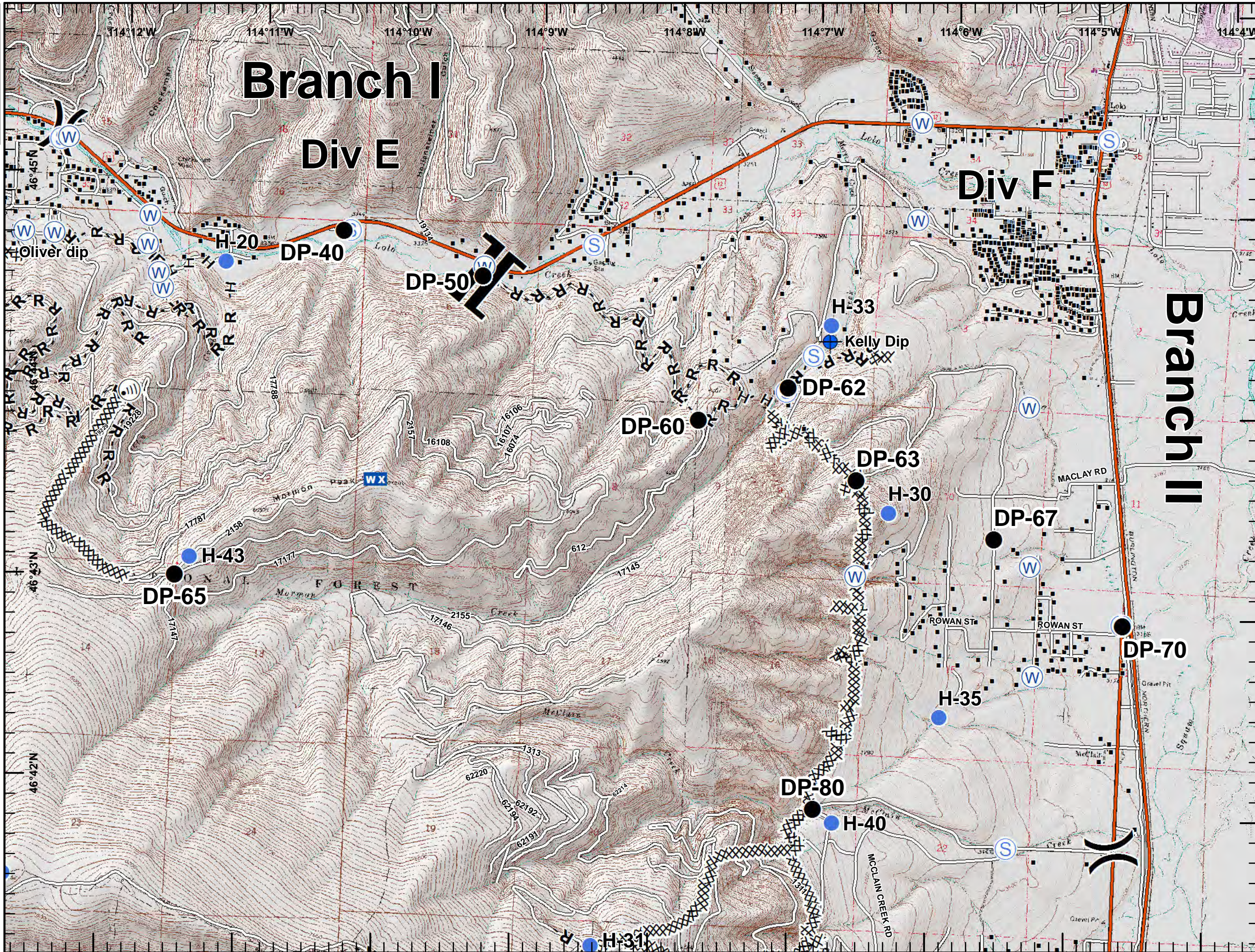
- Dip Site
- Drop Point
- Helispot
- Internet Access
- Mobile Weather Unit
- Retardant/Mud Pit
- Staging Area
- Water Source
- Division Break
- Branch Break
- Structures
- Completed Dozer Line
- Completed Hand Line
- Road as Completed Line
- Aerial Retardant Drop
- Uncontrolled Fire Edge
- Interstate and Highways
- Roads
- State Boundary
- Wildfire Daily Fire Perimeter





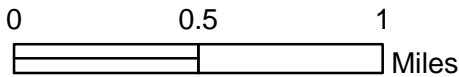
**Lolo Peak Fire**  
 MT-LNF-001288  
 IAP Map, Page 5  
 Div F  
 8/12/2017

7,903 acres, IR Perimeter  
 as of 8/11/2017 @ 0023



- Dip Site
- Drop Point
- Helispot
- Internet Access
- Mobile Weather Unit
- Staging Area
- Water Source
- Division Break
- Branch Break
- Structures
- Completed Dozer Line
- Completed Hand Line
- Road as Completed Line
- Interstate and Highways
- Roads
- State Boundary

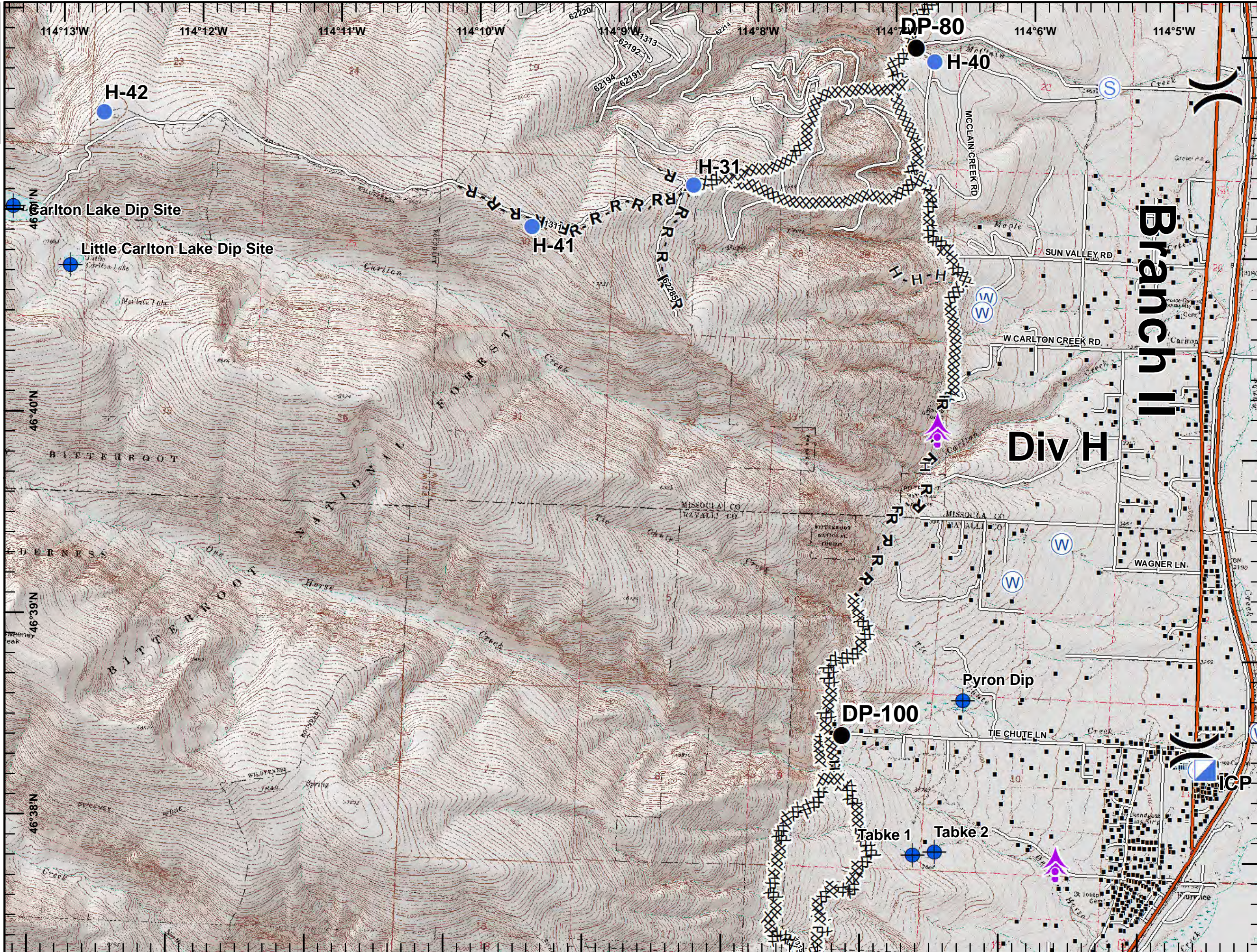
**NORTH**





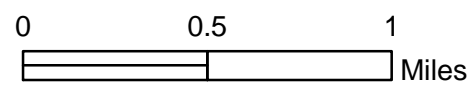
**Lolo Peak Fire**  
 MT-LNF-001288  
**IAP Map, Page 6**  
**Div H**  
 8/12/2017

7,903 acres, IR Perimeter  
 as of 8/11/2017 @ 0023



- Aerial Hazard
- Camp
- Dip Site
- Drop Point
- Helispot
- ICP
- Staging Area
- Water Source
- Division Break
- Structures

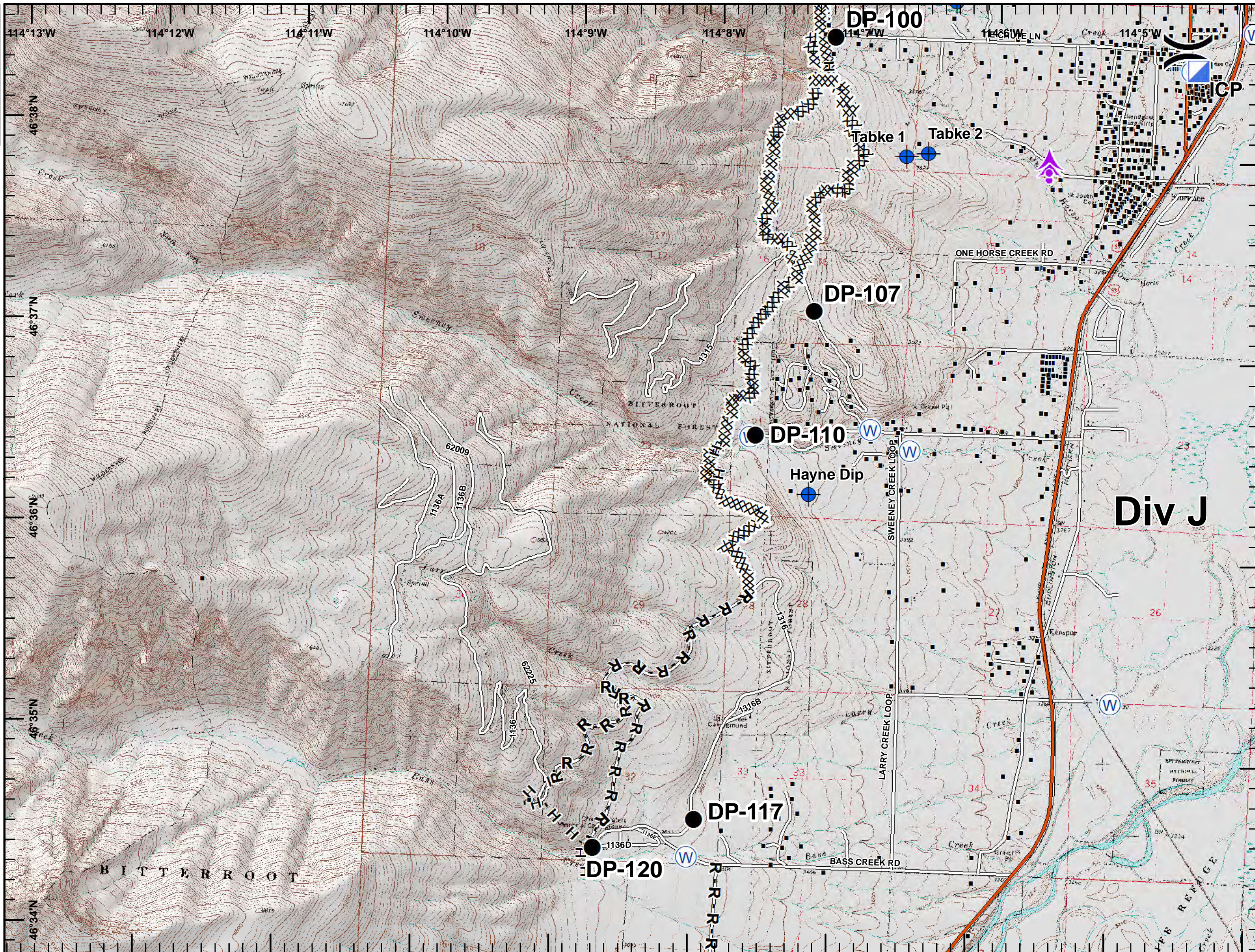
- Completed Dozer Line
- Completed Hand Line
- Road as Completed Line
- Interstate and Highways
- Roads
- State Boundary





**Lolo Peak Fire**  
 MT-LNF-001288  
**IAP Map, Page 7**  
**Div J**  
 8/12/2017

7,903 acres, IR Perimeter  
 as of 8/11/2017 @ 0023



- Aerial Hazard
- Camp
- Dip Site
- Drop Point
- ICP
- Water Source
- Division Break
- Structures
- Completed Dozer Line
- Completed Hand Line
- Road as Completed Line
- Interstate and Highways
- Roads
- State Boundary

