

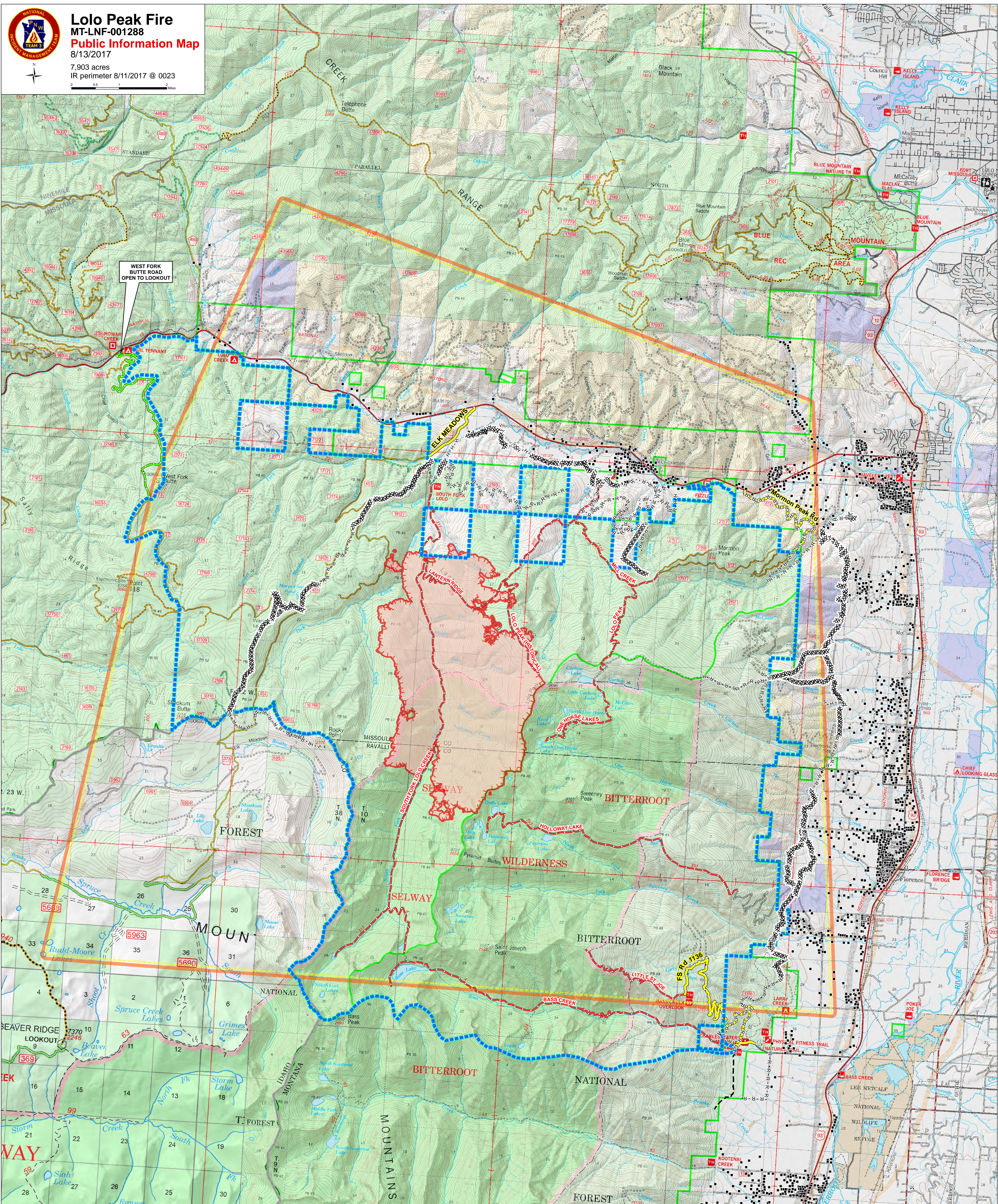


# Lolo Peak Fire MT-LNF-001288 Public Information Map

7,903 acres  
IR perimeter 8/11/2017 @ 0023



0 0.5 1 2 Miles



WEST FORK BUTTE ROAD OPEN TO LOOKOUT

• Structures	XXXXXXXXX Completed Dozer Line	Closure Area	Temporary Flight Restriction - Includes Unmanned Aerial Vehicles (Drones)
West Fork Butte Rd - Open to Lookout	----- Completed Hand Line	State Boundary	Fire Perimeter
Road Closure	- - - - - Road as Completed Line	Uncontrolled Fire Edge	
Trail Closures	- - - - - Planned Fire Line		

Stevensville  
Stevensville Airport  
Stevensville