



# Lolo Peak Fire

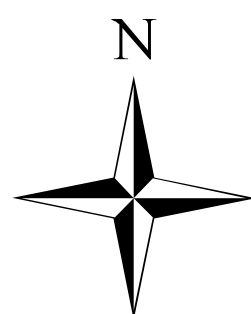
## MT-LNF-001288

### Briefing Map

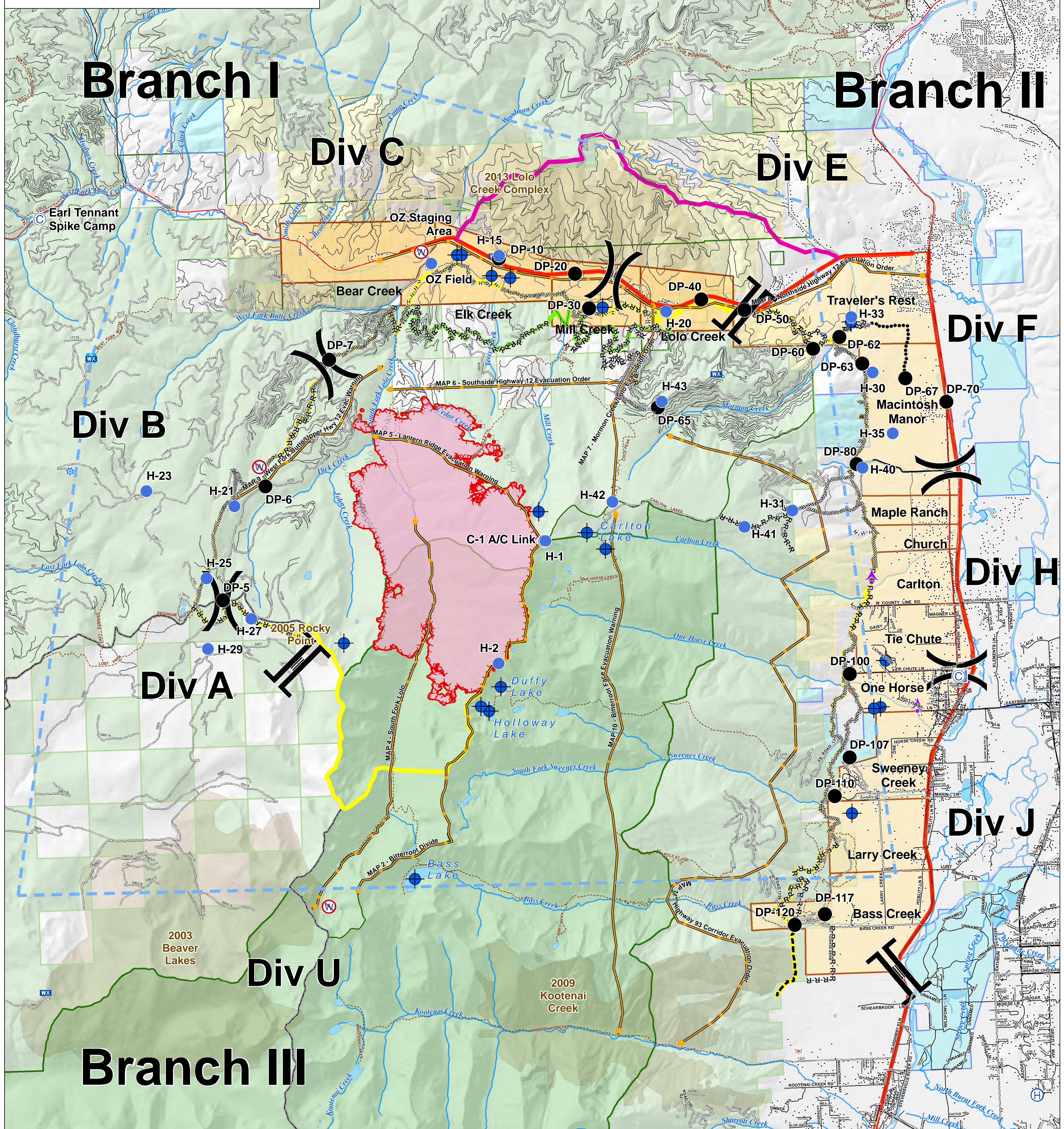
8/13/2017

7,903 acres

IR perimeter 8/11/2017 @ 0023



0 1 2 4 Miles



- |                    |                     |                         |                              |                          |                  |                  |                       |
|--------------------|---------------------|-------------------------|------------------------------|--------------------------|------------------|------------------|-----------------------|
| Sheriff's Repeater | Camp                | Repeater                | Branch Break                 | Aerial Retardant Drop    | Primary Line     | Streams          | State                 |
| Drop Point         | Helibase            | Retardant/Mud Pit       | Completed Dozer Line         | TFR                      | Alternate Line   | Waterbodies      | US Forest Service     |
| Helispot           | ICP                 | Restricted Water Source | Completed Hand Line          | Management Action Points | Contingency Line | Evacuation Zones | Weyerhaeuser          |
| Dip Site           | Lookout             | Division Break          | R-R-R Road as Completed Line | Uncontrolled Fire Edge   | Emergency Line   | States           | Administrative Forest |
| Aerial Hazard      | Mobile Weather Unit |                         | Planned Fire Line            | Highway                  | Trails           | Wilderness       | Other Federal         |
|                    |                     |                         | Planned Secondary Line       | County                   | Trails           |                  |                       |
|                    |                     |                         |                              | Local Roads              | Structures       |                  |                       |

