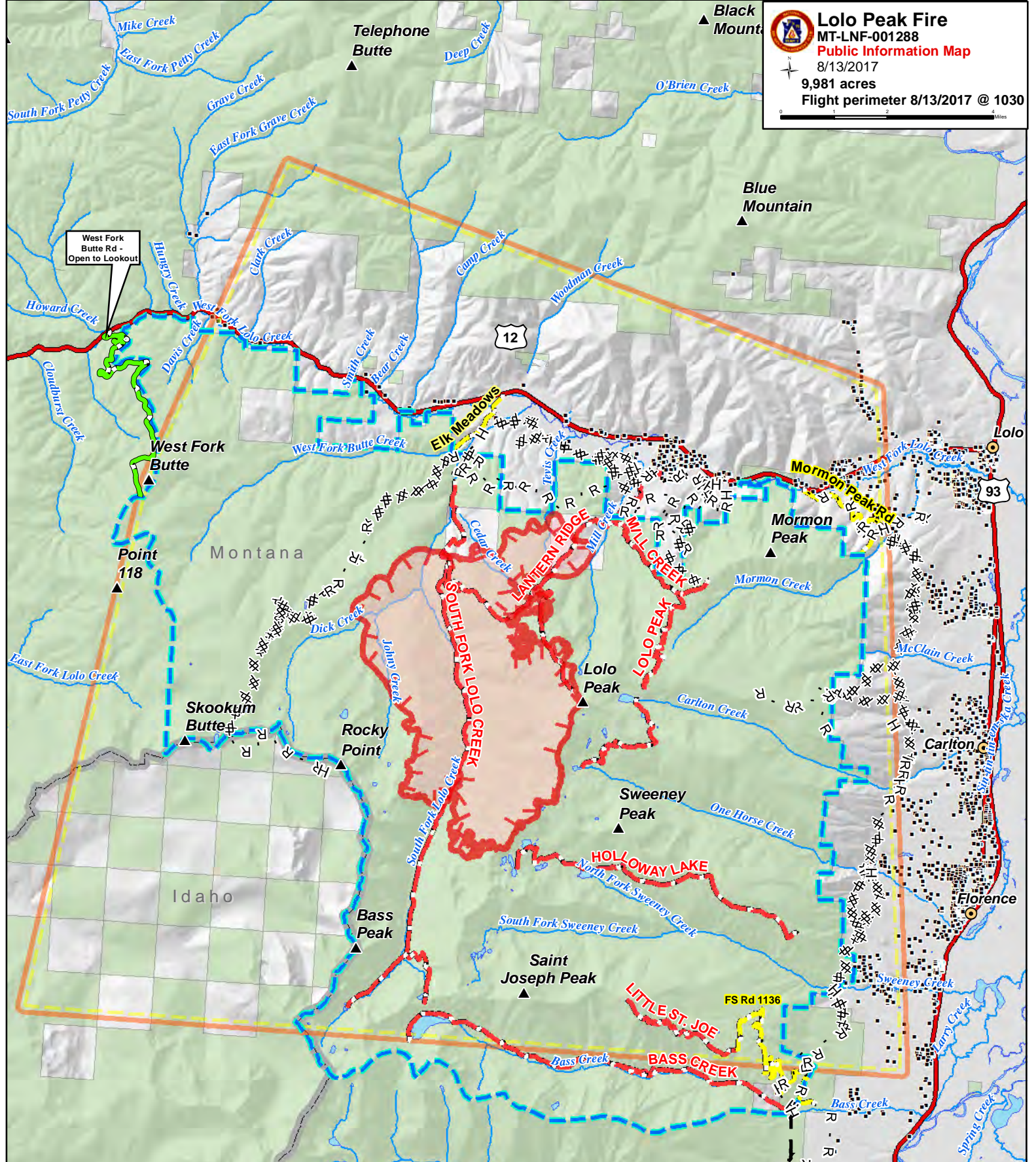


Lolo Peak Fire
 MT-LNF-001288
Public Information Map
 8/13/2017
 9,981 acres
 Flight perimeter 8/13/2017 @ 1030



• Structures	Forest Service	Temporary Flight Restriction - Includes Unmanned Aerial Vehicles (Drones)
West Fork Butte Rd - Open to Lookout	State Boundary	Fire Perimeter
Road Closure	Closure Area	
Trail Closures	Uncontrolled Fire Edge	