

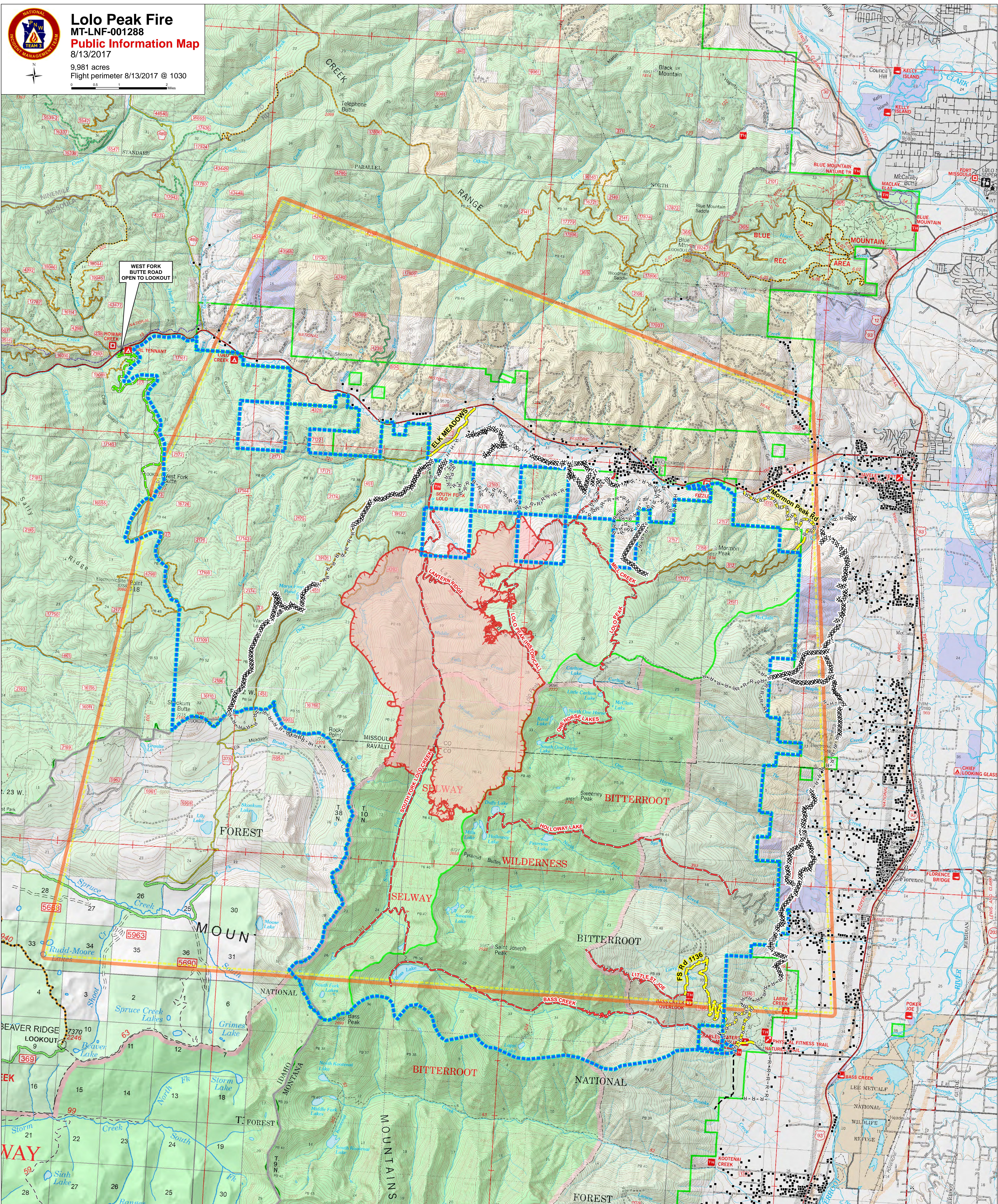


Lolo Peak Fire

MT-LNF-001288

Public Information Map

8/13/2017
9,981 acres
Flight perimeter 8/13/2017 @ 1030



WEST FORK BUTTE ROAD OPEN TO LOOKOUT

- Structures
- West Fork Butte Rd - Open to Lookout
- Road Closure
- Trail Closures
- XXXXXXXXX Completed Dozer Line
- Completed Hand Line
- R-R-R-R Road as Completed Line
- Planned Fire Line
- ▭ Closure Area
- ▭ State Boundary
- ▭ Temporary Flight Restriction - Includes Unmanned Aerial Vehicles (Drones)
- ▭ Fire Perimeter
- ▭ Uncontrolled Fire Edge

Stevensville
Stevensville Airport
Stevensville