



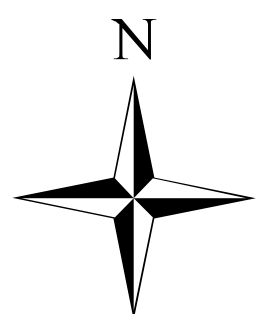
Lolo Peak Fire

MT-LNF-001288

Briefing Map

8/14/2017

9,981 acres, Flight Perimeter
8/13/17 @ 1030



0 1 2 4 Miles

Branch I

Branch II

Div C

Div E

Div F

Div B

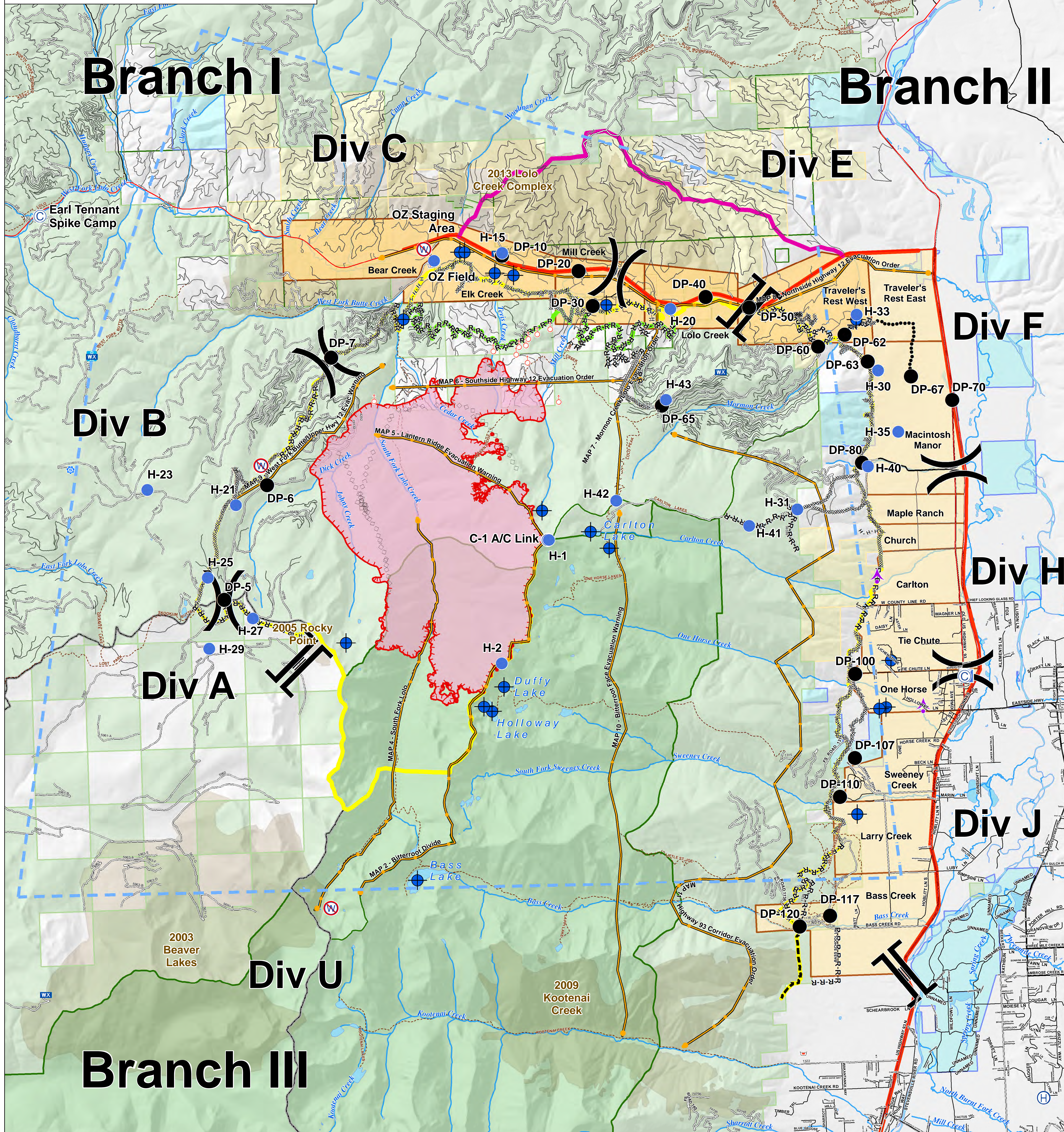
Div H

Div A

Div J

Div U

Branch III



Sheriff's Repeater	Camp	Repeater	Branch Break	Aerial Retardant Drop	Primary Line	Streams	US Forest Service
Drop Point	Helibase	Retardant/Mud Pit	Completed Dozer Line	TFR	Alternate Line	Waterbodies	Weyerhaeuser
Helispot	ICP	Spot Fire	Completed Hand Line	Management Action Points	Contingency Line	States	
Dip Site	Lookout	Restricted Water Source	Road as Completed Line	Uncontrolled Fire Edge	Emergency Line	Administrative Forest	
Aerial Hazard	Mobile Weather Unit	Division Break	Planned Fire Line	Highway	Trails	Wilderness	
			Planned Secondary Line	County	Trails	Other Federal	
				Local Roads	Evacuation Zones	State	

