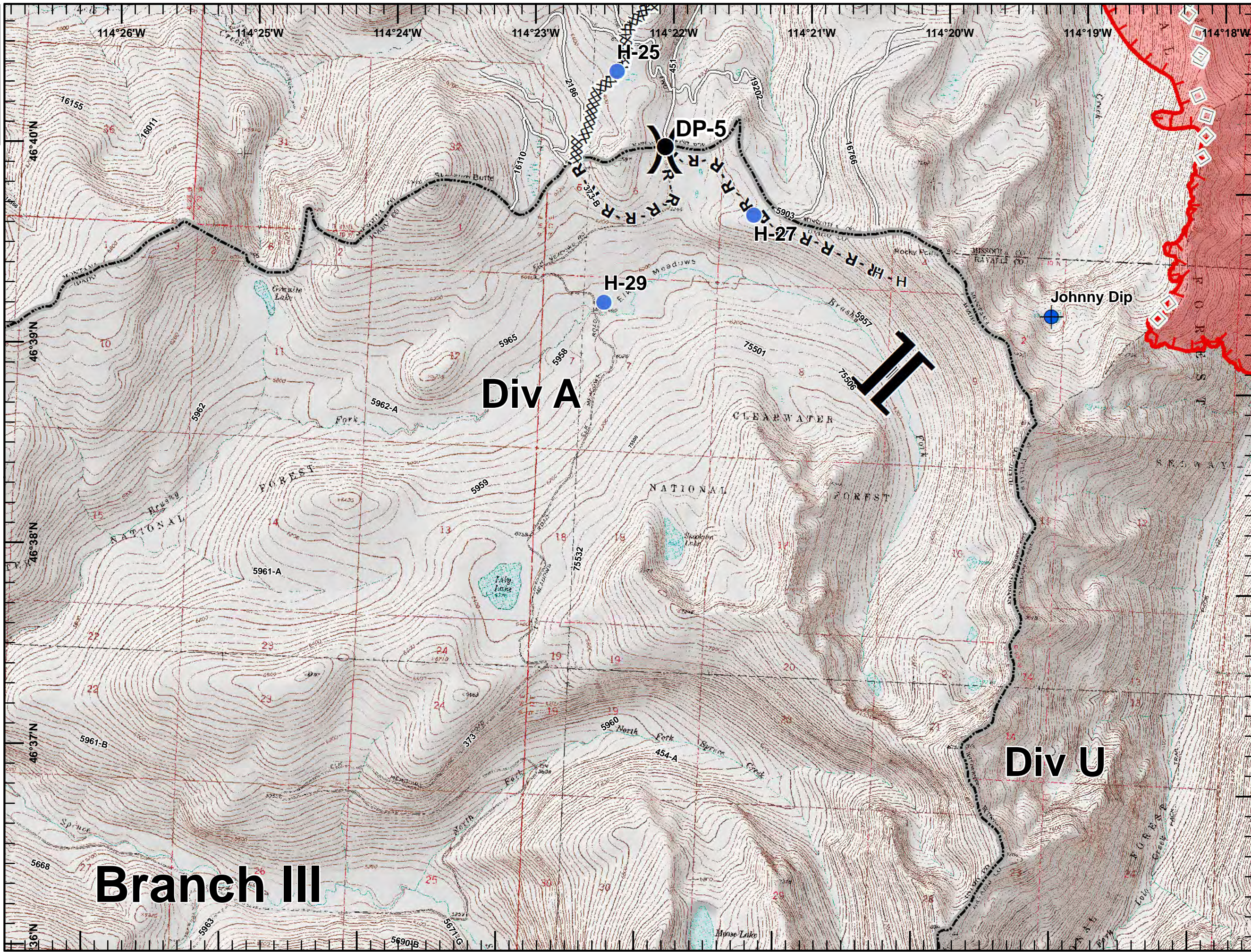


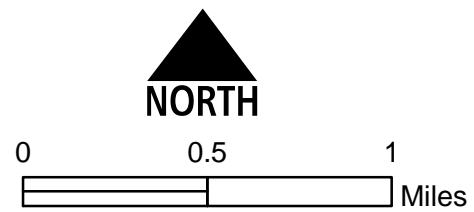


Lolo Peak Fire
 MT-LNF-001288
IAP Map, Night Shift
Page 1, Div A
 8/13/2017

9,981 acres, Flight Perimeter
 as of 8/13/2017 @ 1030



- Dip Site
- Drop Point
- Helispot
- Division Break
- Branch Break
- Completed Dozer Line
- Completed Hand Line
- Road as Completed Line
- Aerial Retardant Drop
- Uncontrolled Fire Edge
- Roads
- State Boundary
- Wildfire Daily Fire Perimeter





Lolo Peak Fire
 MT-LNF-001288
IAP Map, Night Shift
Page 2, Div B
 8/13/2017

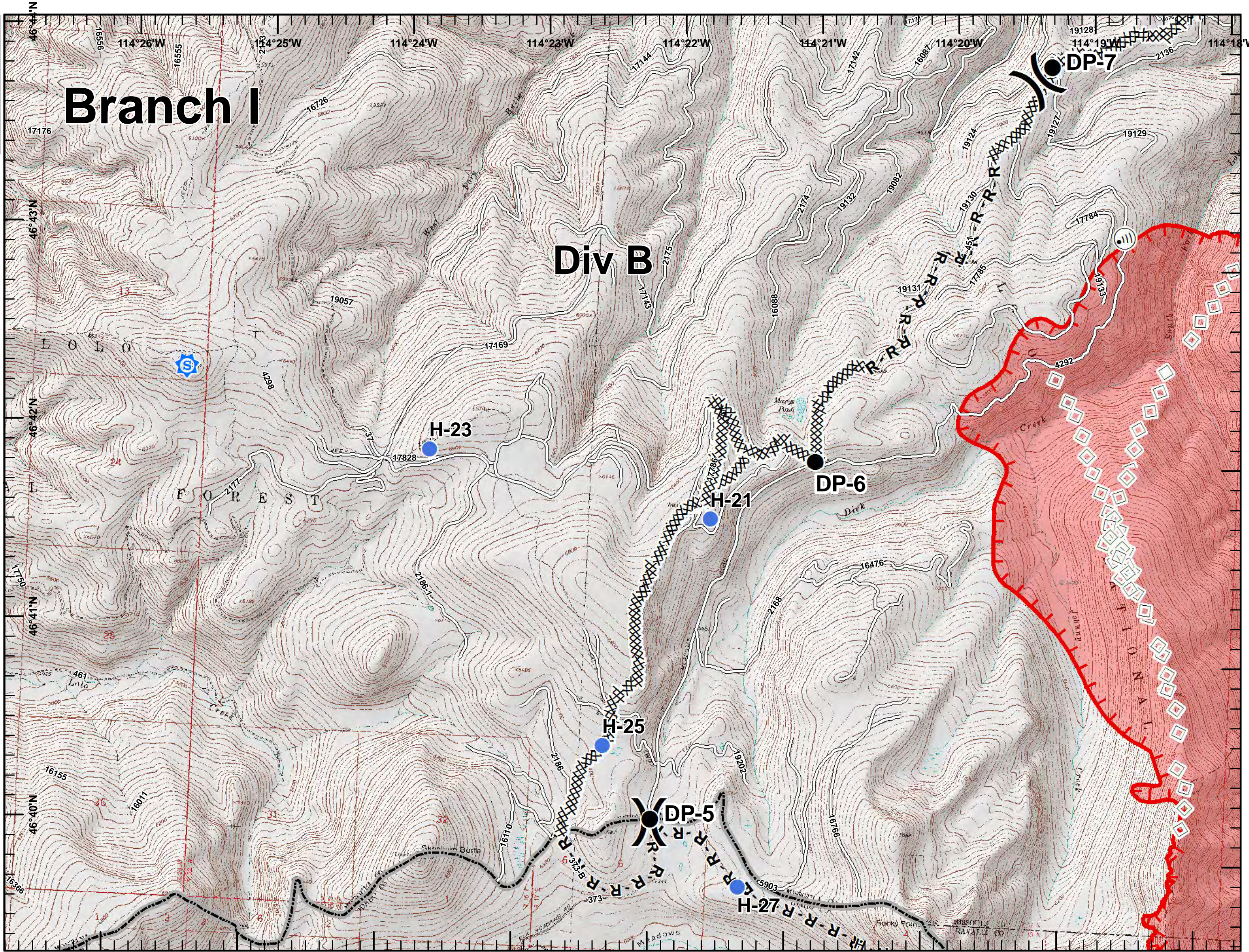
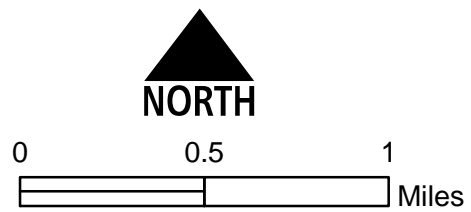
9,981 acres, Flight Perimeter
 as of 8/13/2017 @ 1030



Branch I

Div B

- Sheriff_Rptr
- Drop Point
- Helispot
- Internet Access
- Lookout
- Division Break
- Completed Dozer Line
- Completed Hand Line
- Road as Completed Line
- Aerial Retardant Drop
- Uncontrolled Fire Edge
- Roads
- State Boundary
- Wildfire Daily Fire Perimeter





Lolo Peak Fire
 MT-LNF-001288
IAP Map, Night Shift
Page 3, Div C
 8/13/2017

9,981 acres, Flight Perimeter
 as of 8/13/2017 @ 1030



Branch I

OZ Staging Area

Div C

OZ Field

Potomac 4

Potomac 3

H-15

DP-10

Potomac 2

Potomac 1

DP-20

DP-7

DP-30

Oliver dip

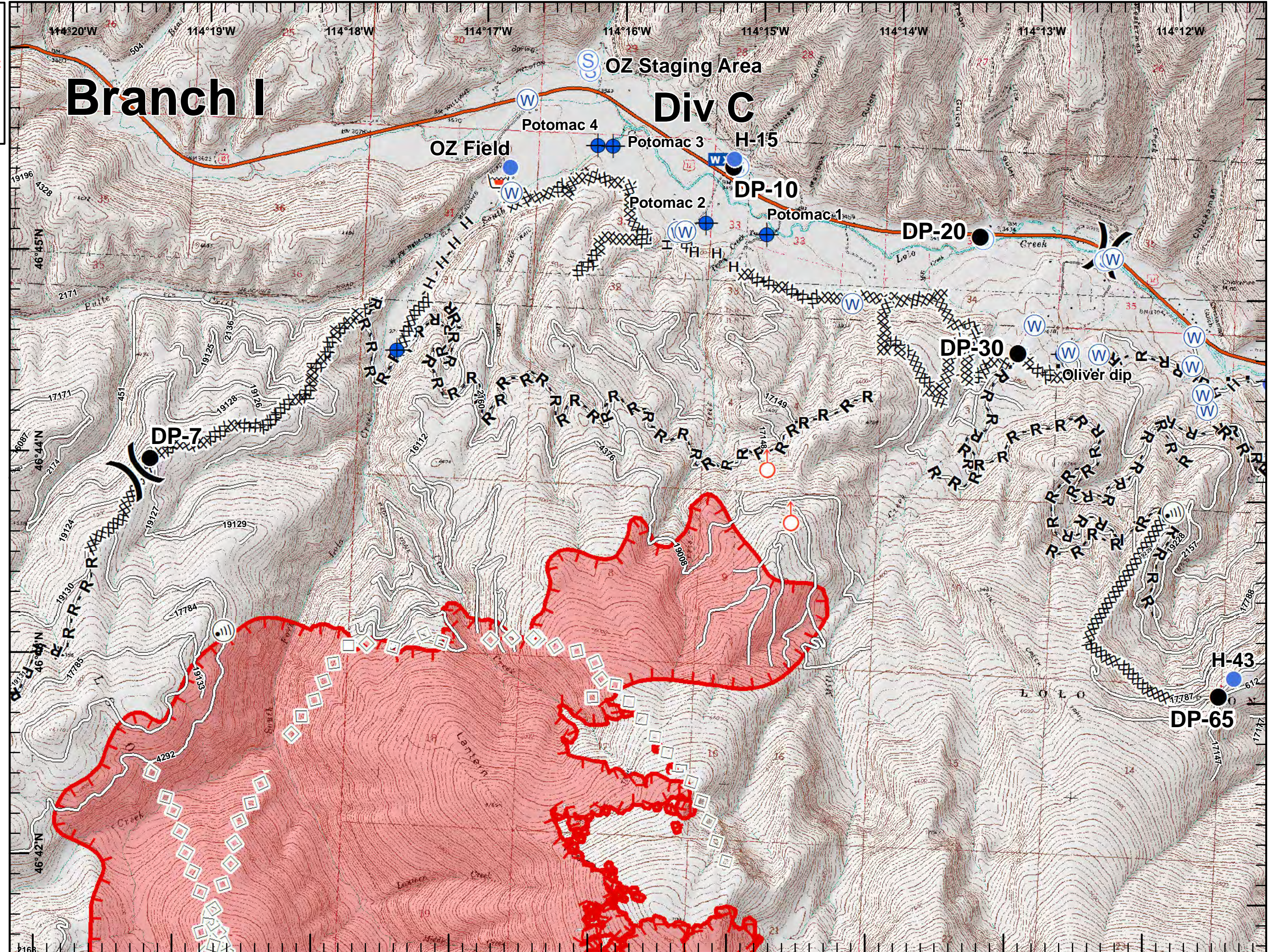
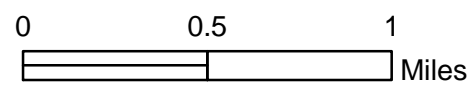
H-43

DP-65

- Dip Site
- Drop Point
- Helispot
- Internet Access
- Mobile Weather Unit
- Retardant/Mud Pit
- Spot Fire
- Staging Area
- Water Source
- Division Break
- Structures

- Completed Dozer Line
- H - H Completed Hand Line
- R - R Road as Completed Line

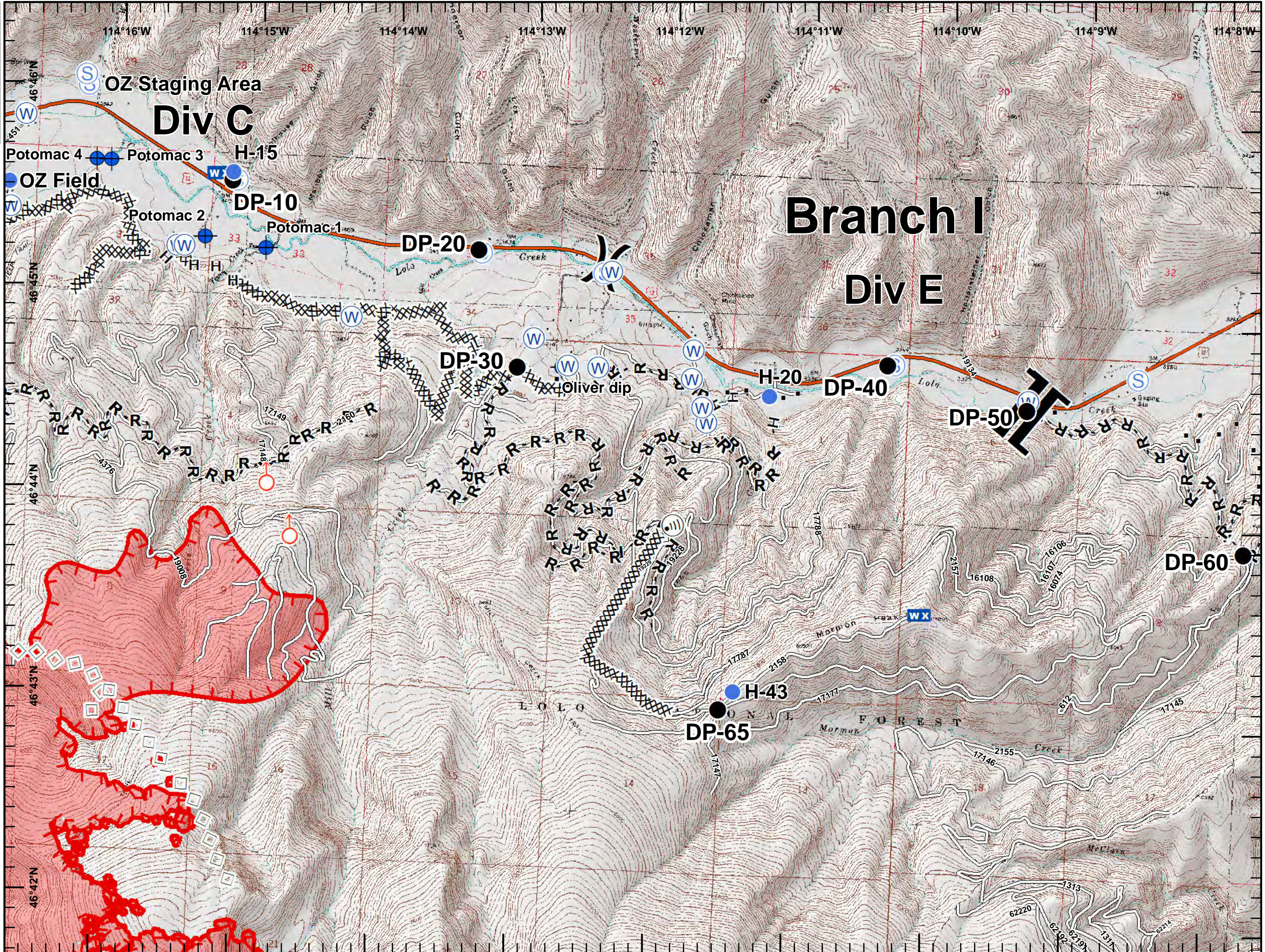
- Aerial Retardant Drop
- Uncontrolled Fire Edge
- Interstate and Highways
- Roads
- State Boundary
- Wildfire Daily Fire Perimeter



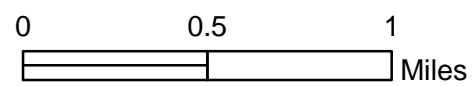


Lolo Peak Fire
 MT-LNF-001288
IAP Map, Night Shift
Page 4, Div E
 8/13/2017

9,981 acres, Flight Perimeter
 as of 8/13/2017 @ 1030



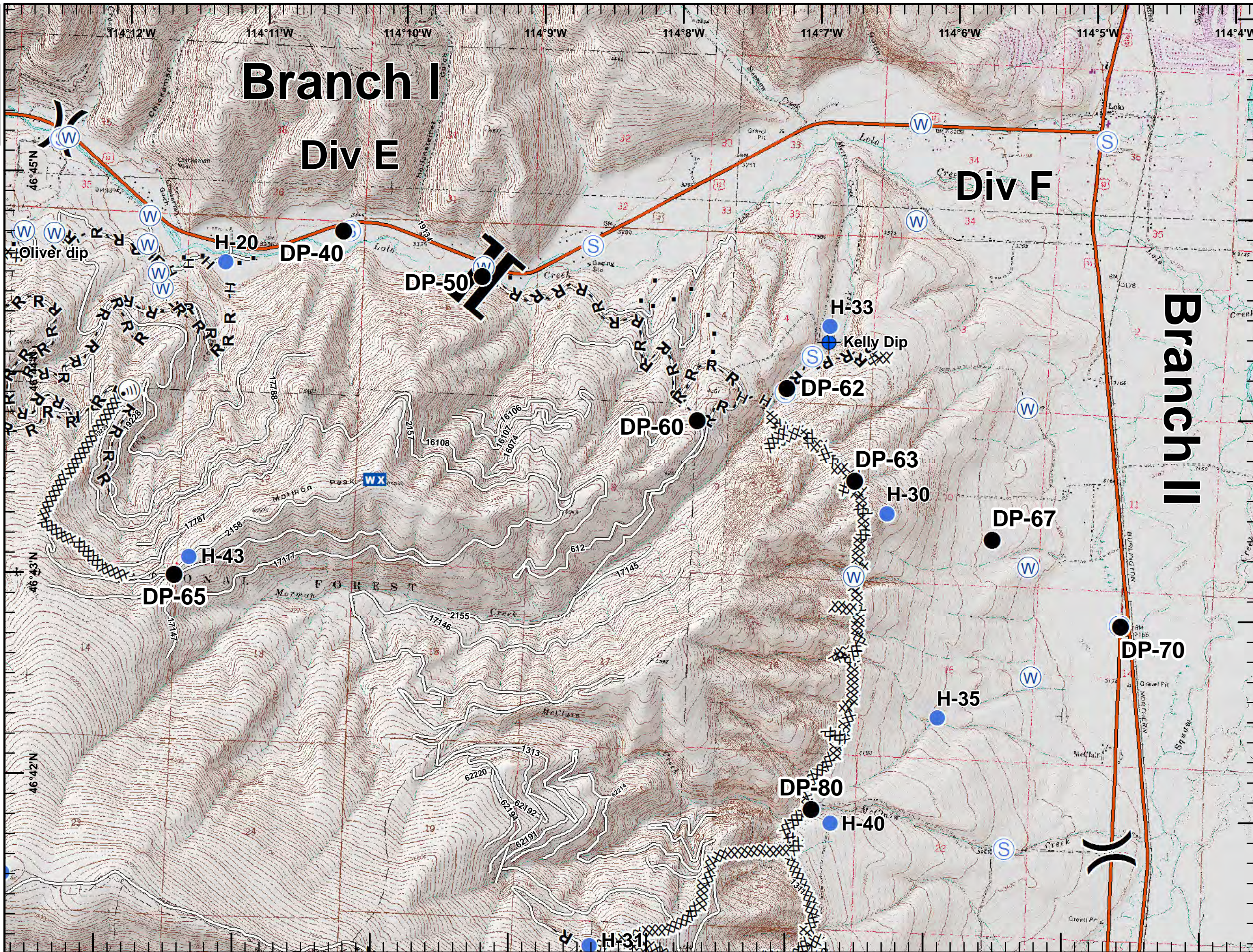
- ◆ Dip Site
- Drop Point
- Helispot
- Ⓜ Internet Access
- WX Mobile Weather Unit
- ☒ Retardant/Mud Pit
- Spot Fire
- Ⓢ Staging Area
- Ⓜ Water Source
-) Division Break
- || Branch Break
- Structures
- XXXXXX Completed Dozer Line
- H - H Completed Hand Line
- R - R Road as Completed Line
- Aerial Retardant Drop
- ▬ Uncontrolled Fire Edge
- ▬ Interstate and Highways
- ▬ Roads
- ▭ State Boundary
- ▭ Wildfire Daily Fire Perimeter



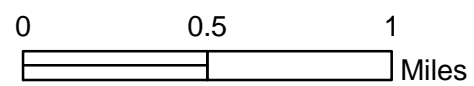


Lolo Peak Fire
 MT-LNF-001288
IAP Map, Night Shift
Page 5, Div F
 8/13/2017

9,981 acres, Flight Perimeter
 as of 8/13/2017 @ 1030



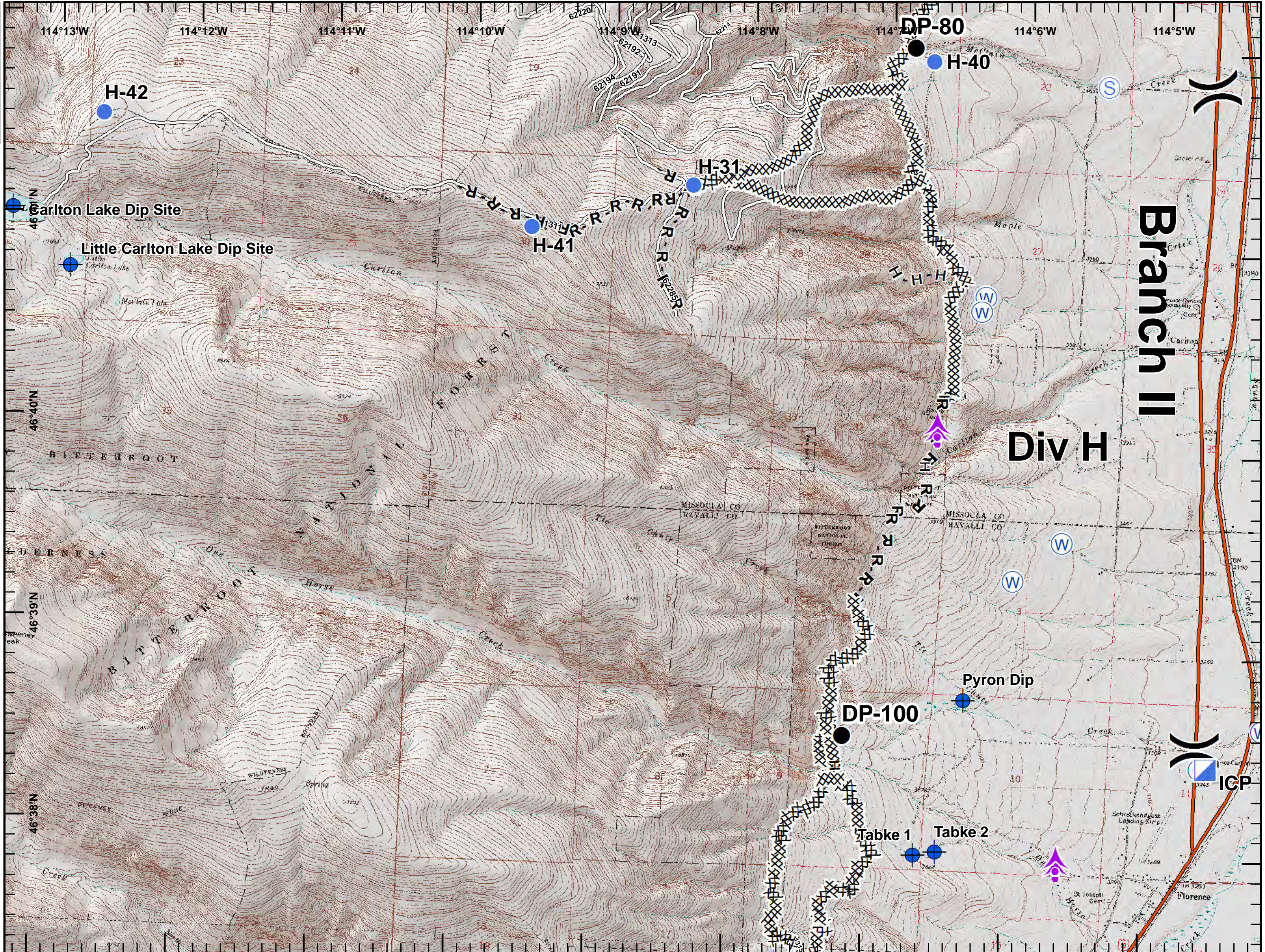
- Dip Site
- Drop Point
- Helispot
- Internet Access
- Mobile Weather Unit
- Staging Area
- Water Source
- Division Break
- Branch Break
- Structures
- Completed Dozer Line
- Completed Hand Line
- Road as Completed Line
- Interstate and Highways
- Roads
- State Boundary





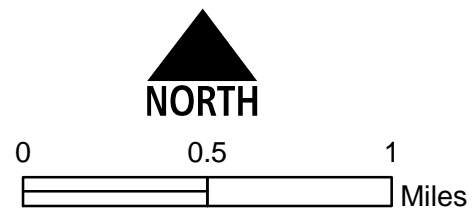
Lolo Peak Fire
 MT-LNF-001288
IAP Map, Night Shift
Page 6, Div H
 8/13/2017

9,981 acres, Flight Perimeter
 as of 8/13/2017 @ 1030



- Aerial Hazard
- Camp
- Dip Site
- Drop Point
- Helispot
- ICP
- Staging Area
- Water Source
- Division Break

- Completed Dozer Line
- Completed Hand Line
- Road as Completed Line
- Interstate and Highways
- Roads
- State Boundary



Branch II

Div H

ICP

H-42

Carlton Lake Dip Site

Little Carlton Lake Dip Site

H-41

H-31

DP-80

H-40

DP-100

Pyron Dip

Tabke 1

Tabke 2

46°41'N

46°40'N

46°39'N

46°38'N

114°13'W

114°12'W

114°11'W

114°10'W

114°9'W

114°8'W

114°7'W

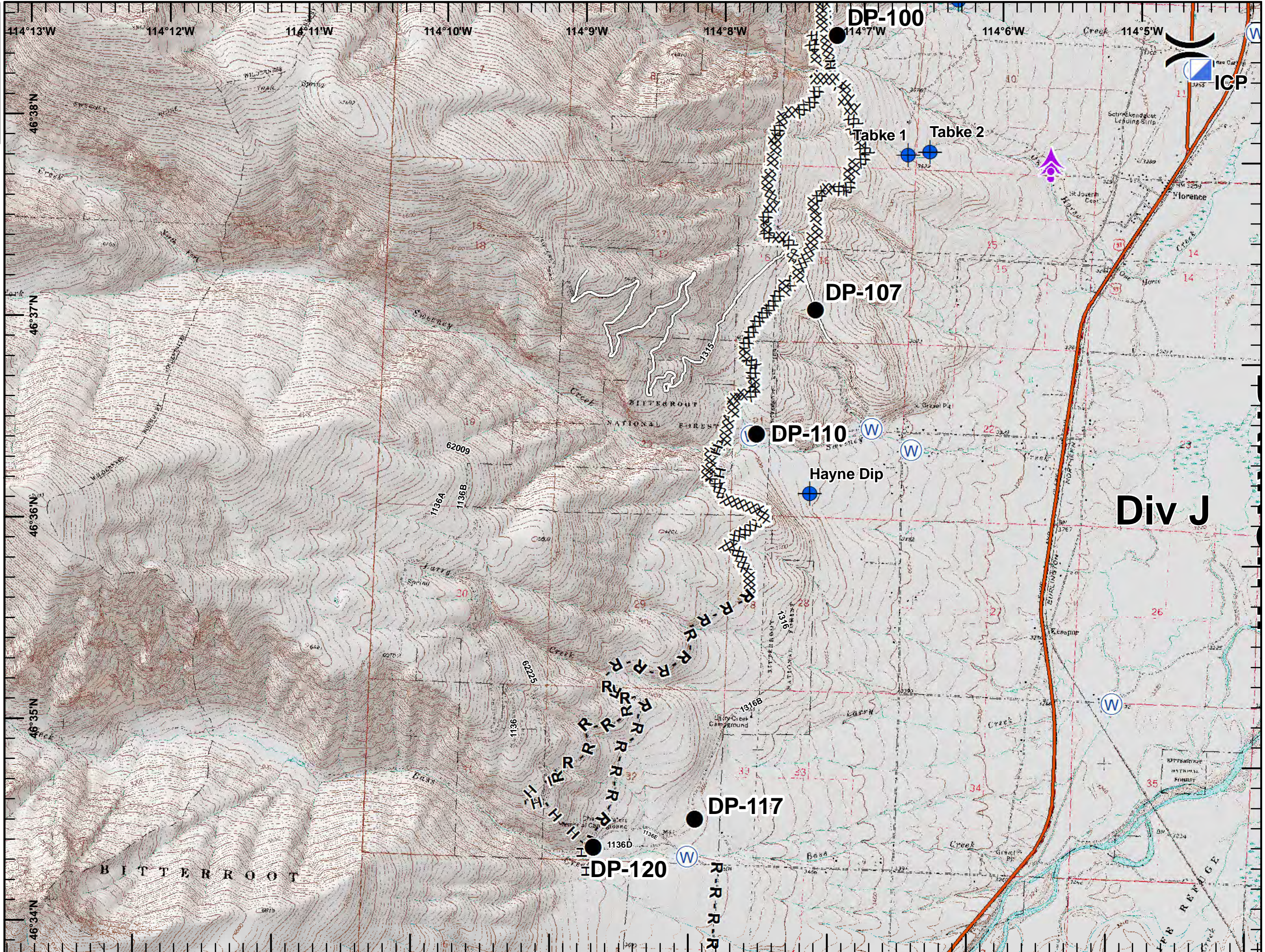
114°6'W

114°5'W

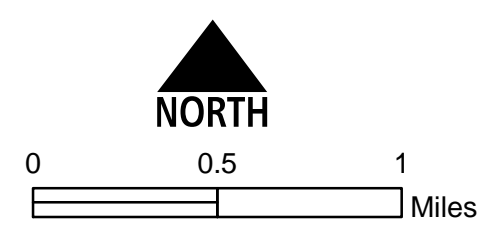


Lolo Peak Fire
 MT-LNF-001288
IAP Map, Night Shift
Page 7, Div J
 8/13/2017

9,981 acres, Flight Perimeter
 as of 8/13/2017 @ 1030



- Aerial Hazard
- Camp
- Dip Site
- Drop Point
- ICP
- Water Source
- Division Break
- Completed Dozer Line
- Completed Hand Line
- Road as Completed Line
- Interstate and Highways
- Roads
- State Boundary



Div J