



Lolo Peak Fire

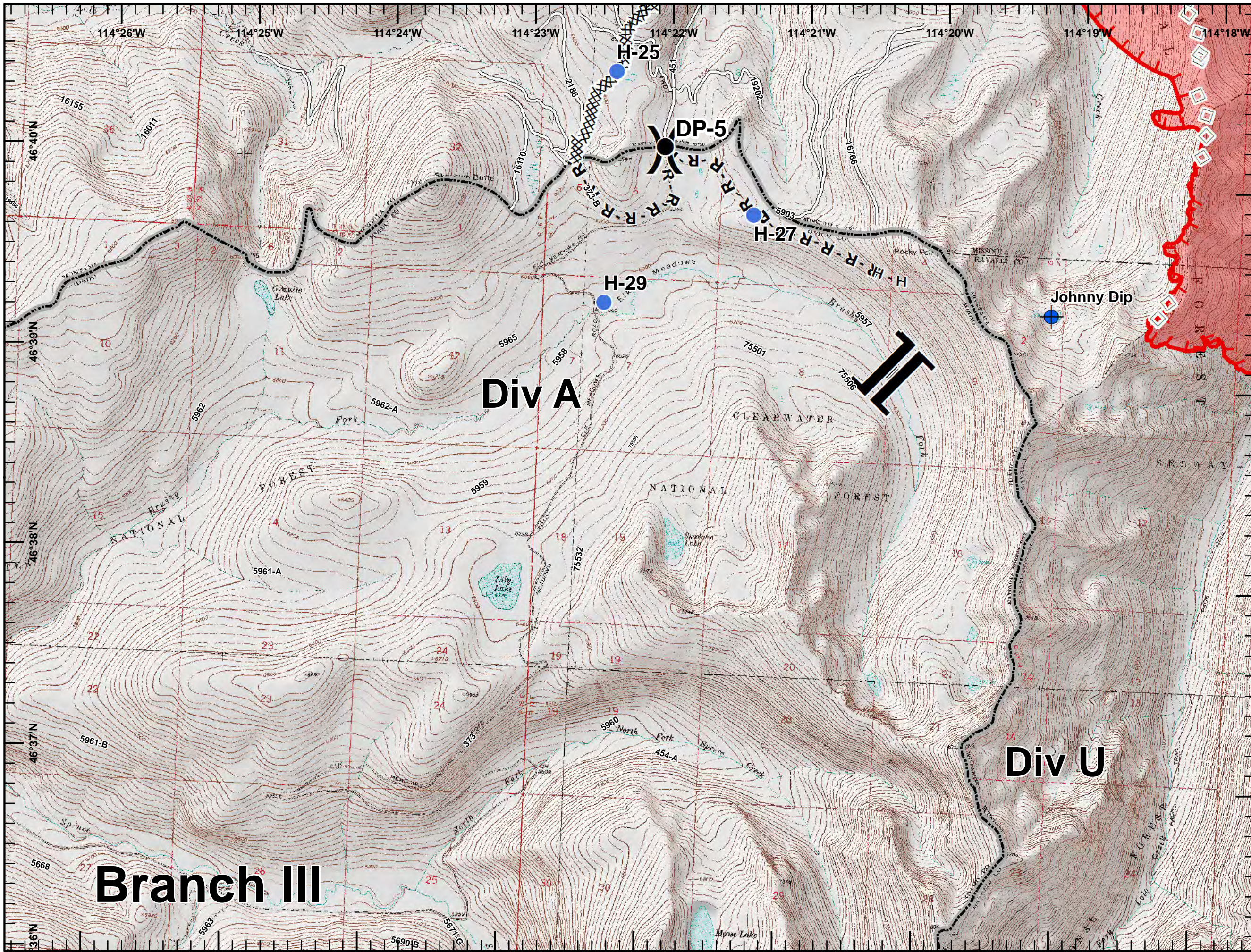
MT-LNF-001288

IAP Map, Day Shift

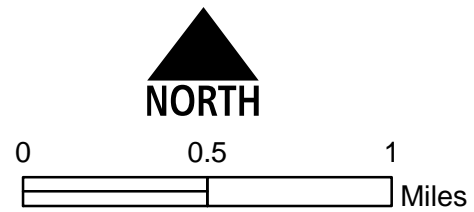
Page 1, Div A

8/14/2017

9,981 acres, Flight Perimeter as of 8/13/2017 @ 1030



- Dip Site
- Drop Point
- Helispot
- Division Break
- Branch Break
- Completed Dozer Line
- H - H Completed Hand Line
- R - R Road as Completed Line
- Aerial Retardant Drop
- Uncontrolled Fire Edge
- Roads
- State Boundary
- Wildfire Daily Fire Perimeter





Lolo Peak Fire
 MT-LNF-001288
IAP Map, Day Shift
Page 2, Div B
8/14/2017

9,981 acres, Flight Perimeter
 as of 8/13/2017 @ 1030



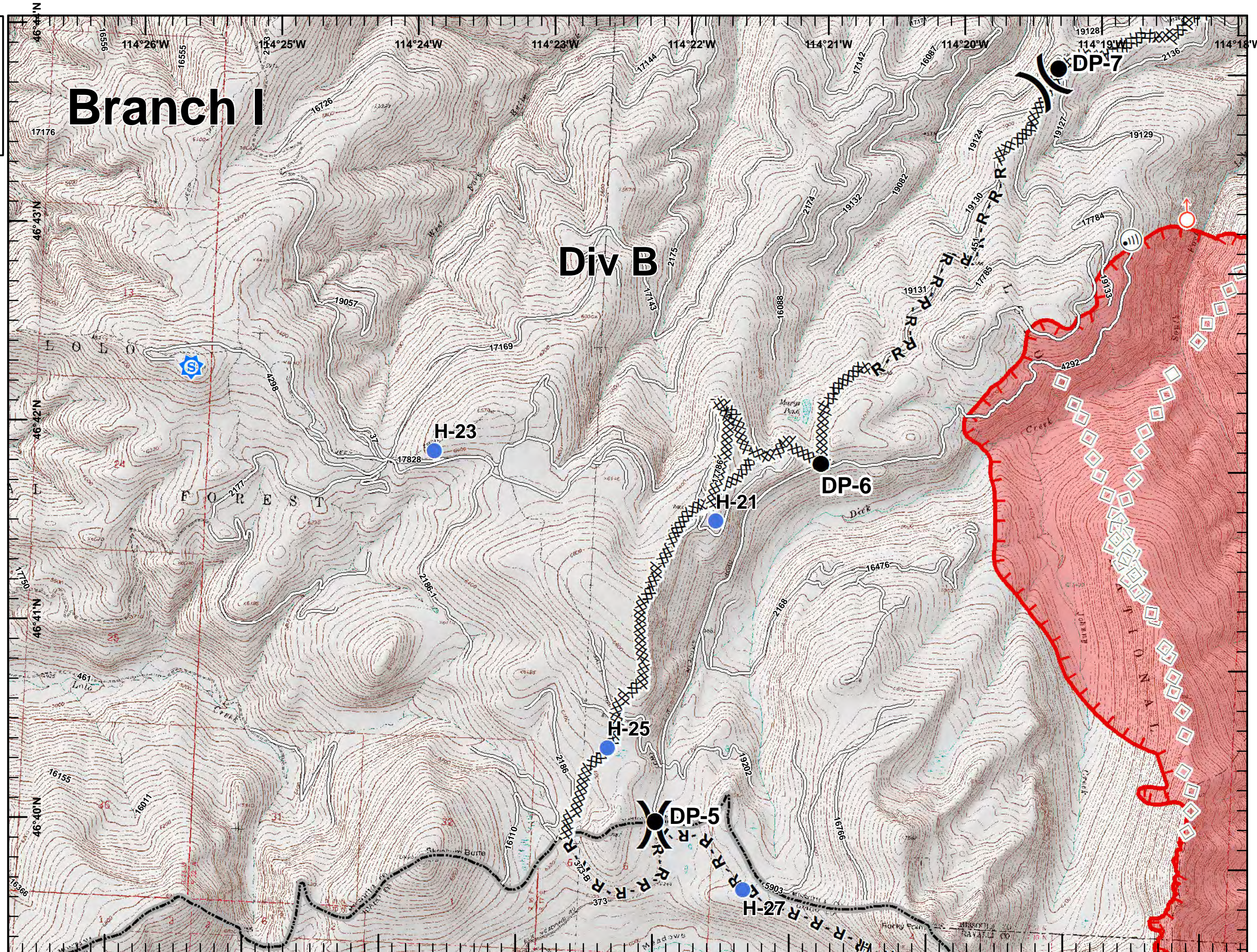
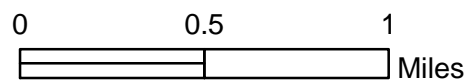
Branch I

Div B

- Sheriff_Rptr
- Drop Point
- Helispot
- Internet Access
- Lookout
- Spot Fire
- Division Break
- Completed Dozer Line
- Completed Hand Line
- Road as Completed Line
- Aerial Retardant Drop
- Uncontrolled Fire Edge
- Roads
- State Boundary
- Wildfire Daily Fire Perimeter



NORTH





Lolo Peak Fire
 MT-LNF-001288
IAP Map, Day Shift
Page 3, Div C
 8/14/2017

9,981 acres, Flight Perimeter
 as of 8/13/2017 @ 1030



Branch I

OZ Staging Area

Div C

OZ Field

Potomac 4

Potomac 3

H-15

DP-10

Potomac 1

DP-20

DP-7

DP-30

Oliver dip

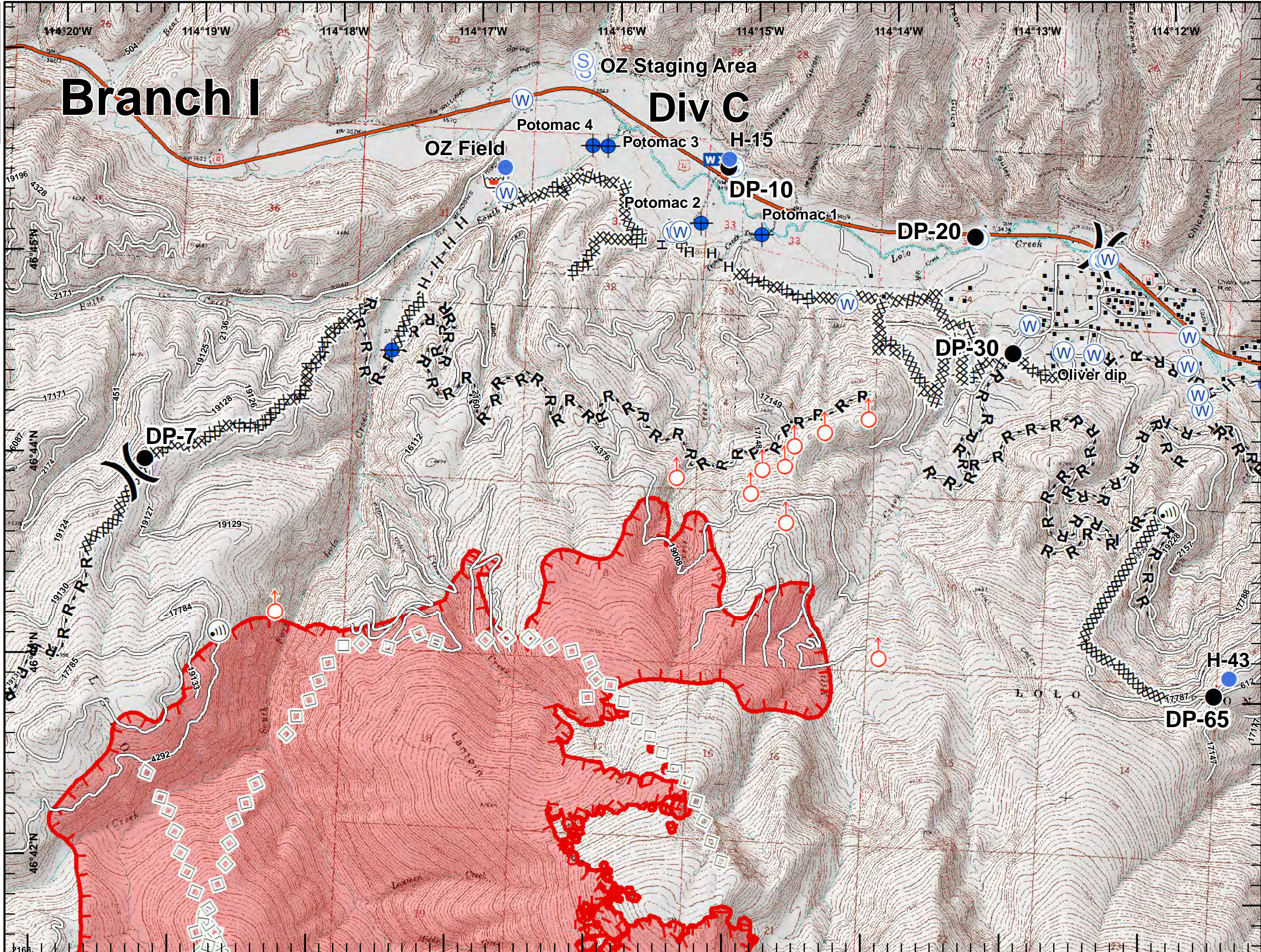
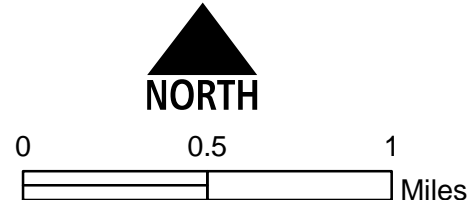
H-43

DP-65

- Dip Site
- Drop Point
- Helispot
- Internet Access
- Mobile Weather Unit
- Retardant/Mud Pit
- Spot Fire
- Staging Area
- Water Source
- Division Break
- Structures

- Completed Dozer Line
- H - H Completed Hand Line
- R - R Road as Completed Line

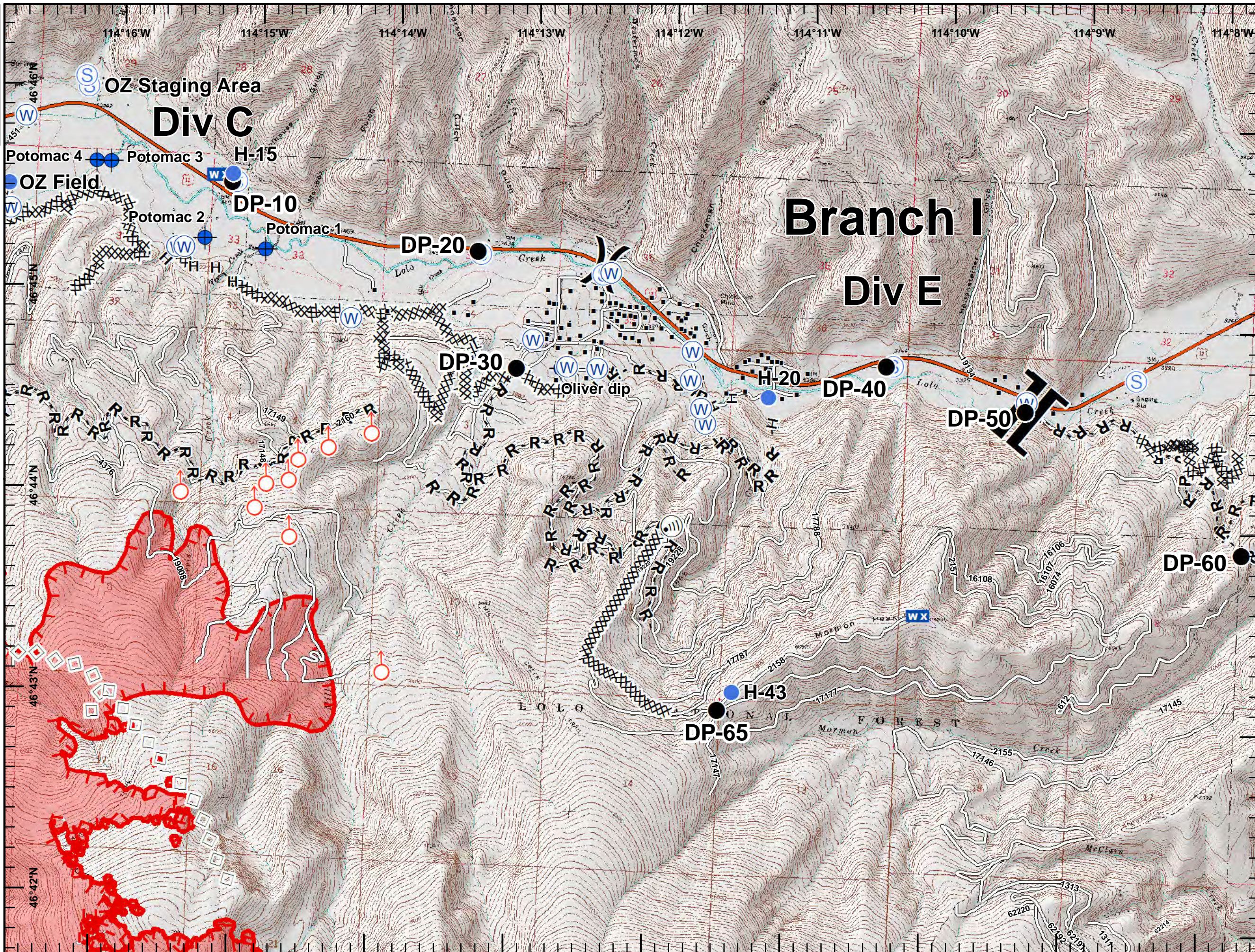
- Aerial Retardant Drop
- Uncontrolled Fire Edge
- Interstate and Highways
- Roads
- State Boundary
- Wildfire Daily Fire Perimeter



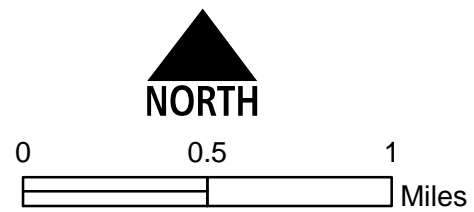


Lolo Peak Fire
 MT-LNF-001288
IAP Map, Day Shift
Page 4, Div E
 8/14/2017

9,981 acres, Flight Perimeter
 as of 8/13/2017 @ 1030



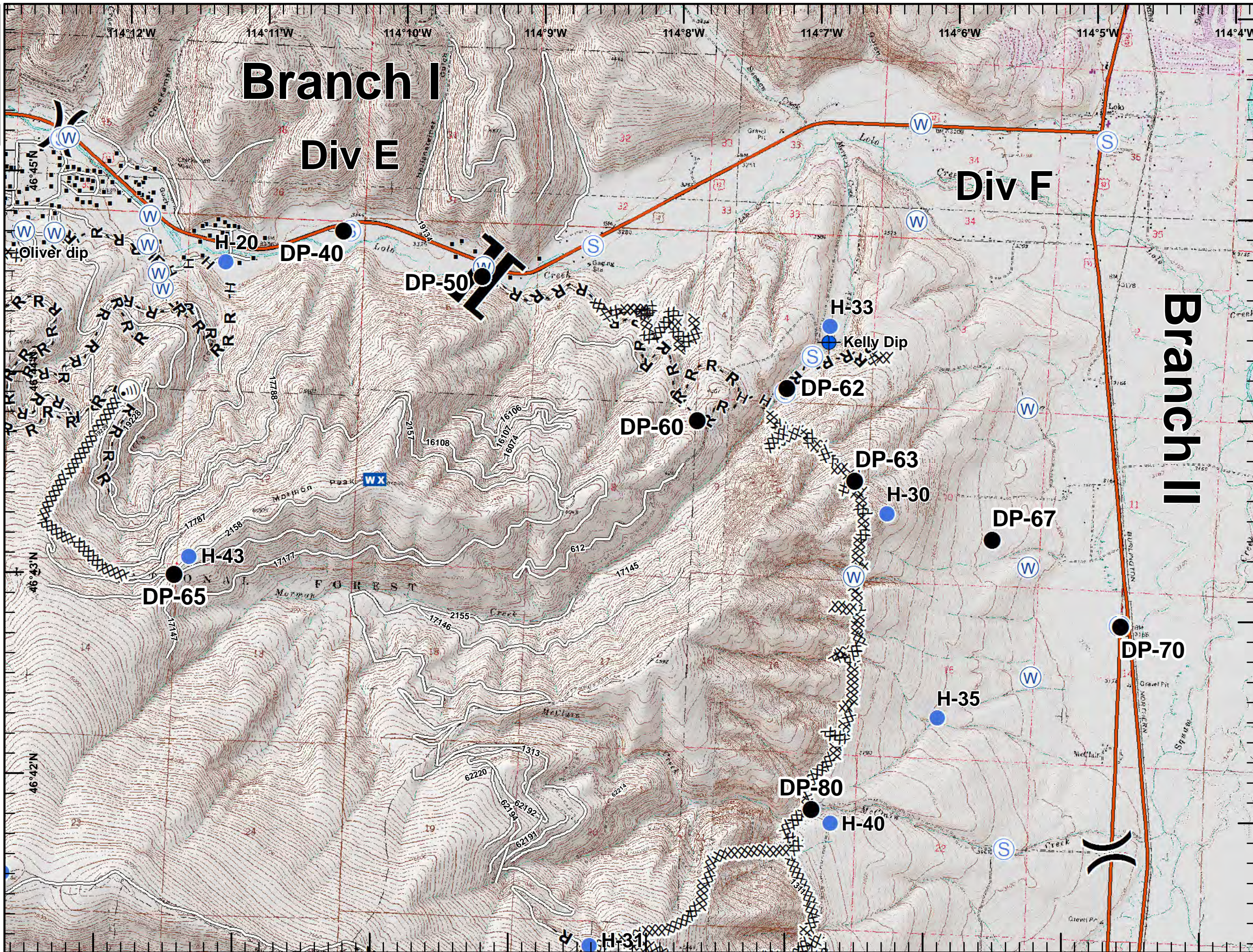
- ◆ Dip Site
- Drop Point
- Helispot
- i Internet Access
- WX Mobile Weather Unit
- Retardant/Mud Pit
- Spot Fire
- S Staging Area
- W Water Source
-) Division Break
- Branch Break
- Structures
- Completed Dozer Line
- H - H Completed Hand Line
- R - R Road as Completed Line
- Aerial Retardant Drop
- Uncontrolled Fire Edge
- Interstate and Highways
- Roads
- State Boundary
- Wildfire Daily Fire Perimeter



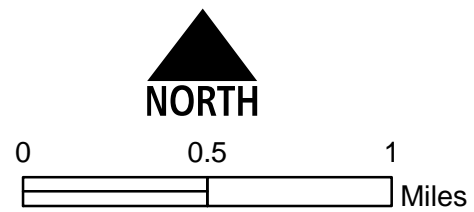


Lolo Peak Fire
 MT-LNF-001288
IAP Map, Day Shift
Page 5, Div F
 8/14/2017

9,981 acres, Flight Perimeter
 as of 8/13/2017 @ 1030



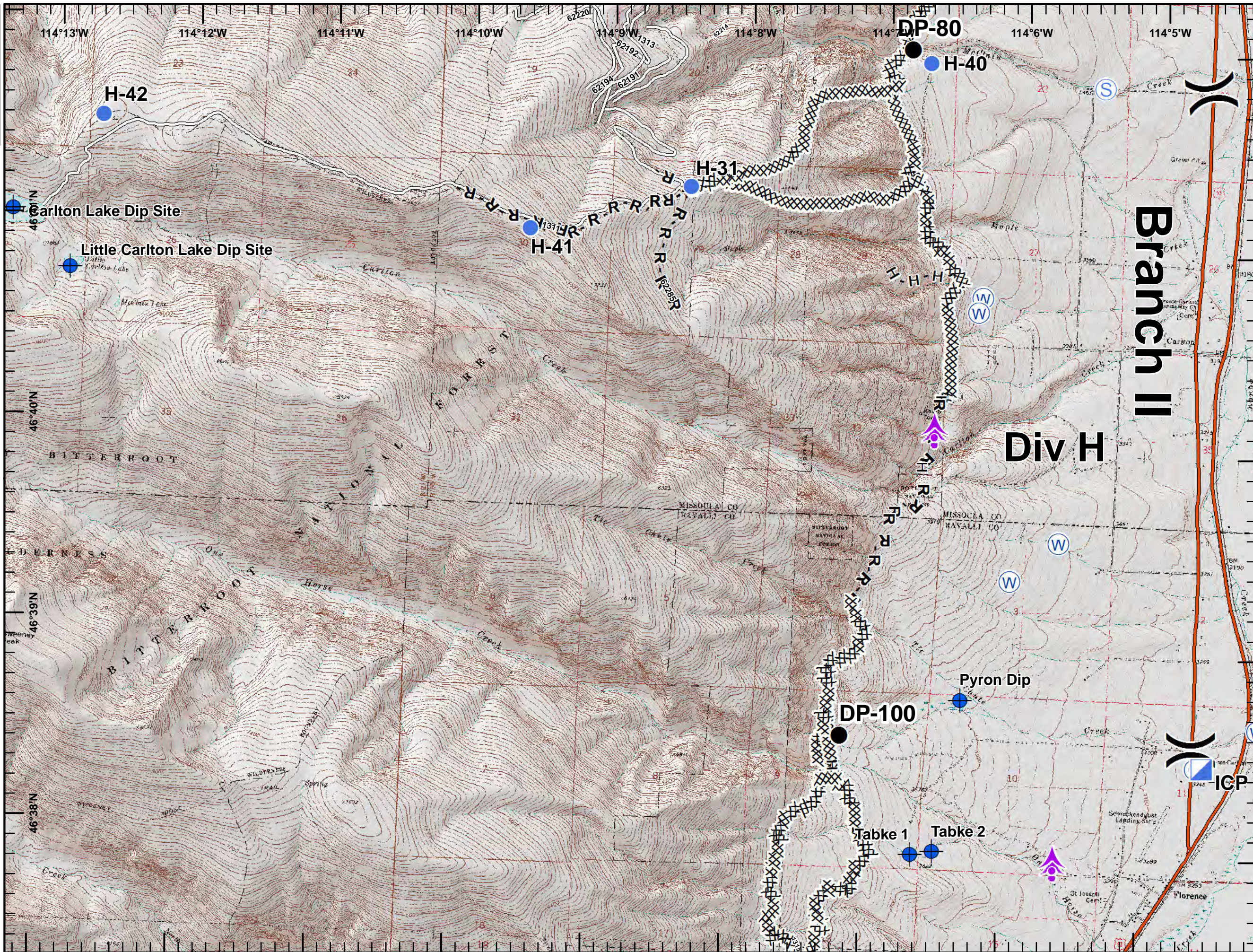
- Dip Site
- Drop Point
- Helispot
- Internet Access
- Mobile Weather Unit
- Staging Area
- Water Source
- Division Break
- Branch Break
- Structures
- Completed Dozer Line
- Completed Hand Line
- Road as Completed Line
- Interstate and Highways
- Roads
- State Boundary





Lolo Peak Fire
 MT-LNF-001288
IAP Map, Day Shift
Page 6, Div H
 8/14/2017

9,981 acres, Flight Perimeter
 as of 8/13/2017 @ 1030



Aerial Hazard

Camp

Dip Site

Drop Point

Helispot

ICP

Staging Area

Water Source

Division Break

Completed Dozer Line

Completed Hand Line

Road as Completed Line

Interstate and Highways

Roads

State Boundary

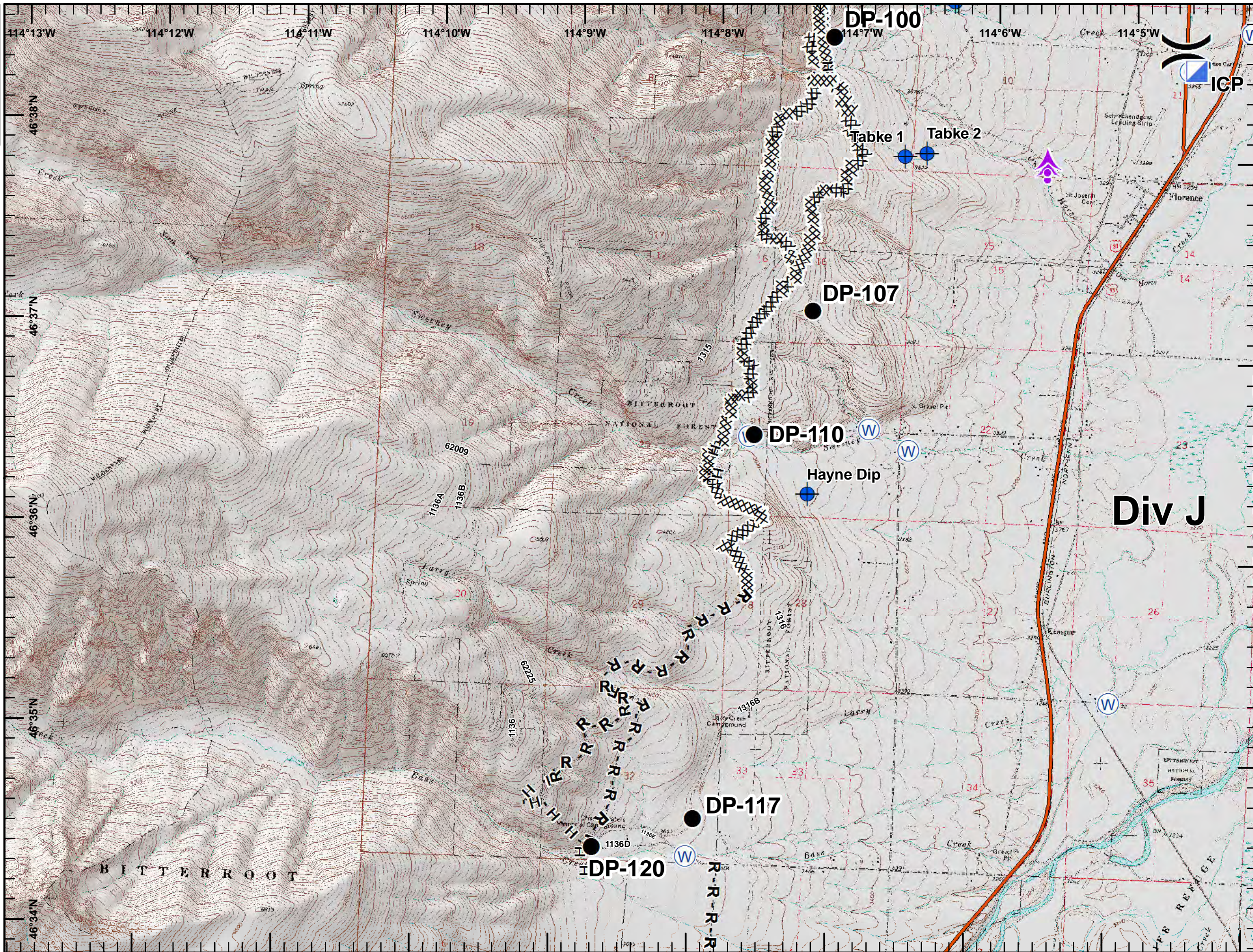
NORTH

0 0.5 1
 Miles



Lolo Peak Fire
 MT-LNF-001288
IAP Map, Day Shift
Page 7, Div J
8/14/2017

9,981 acres, Flight Perimeter
 as of 8/13/2017 @ 1030



Aerial Hazard

Camp

Dip Site

Drop Point

ICP

Water Source

Division Break

Completed Dozer Line

H - H Completed Hand Line

R - R Road as Completed Line

Interstate and Highways

State Boundary



NORTH

