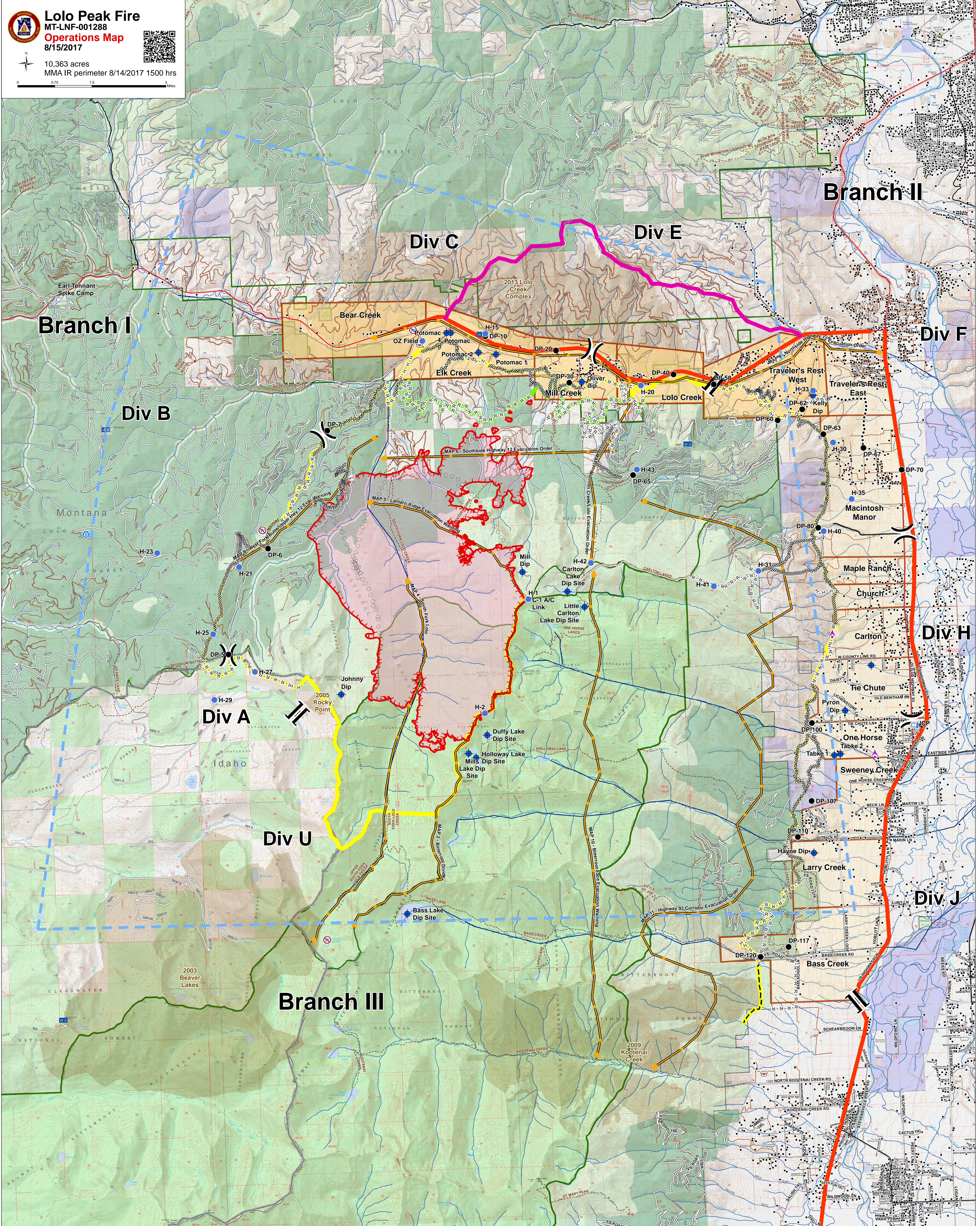
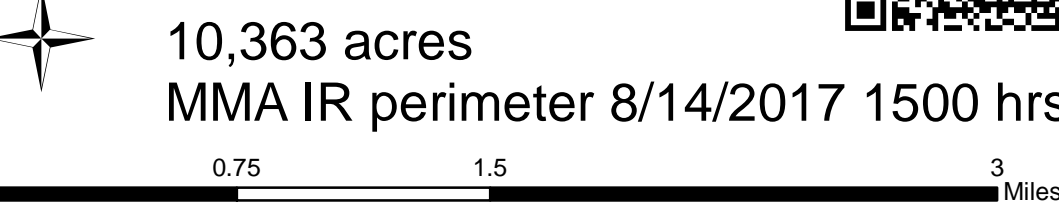




Lolo Peak Fire
 MT-LNF-001288
Operations Map
 8/15/2017



10,363 acres
 MMA IR perimeter 8/14/2017 1500 hrs



- | | | | | | | | | |
|---------------|---------------------|-------------------------|------------------------|--------------------------|------------------|------------------|-----------------------------------|-------------------------------|
| Aerial Hazard | ICP | Retardant/Mud Pit | Completed Dozer Line | Uncontrolled Fire Edge | Primary Line | Trails | Values at Risk Bull Trout Streams | Wildfire Daily Fire Perimeter |
| Camp | Internet Access | Restricted Water Source | Completed Hand Line | TFR | Alternate Line | Structures | Values at Risk Timber | Fire History 1980 - Present |
| Dip Site | Lookout | Division Break | Road as Completed Line | Management Action Points | Contingency Line | Evacuation Zones | Timber Inv Mgmt | State Boundary |
| Drop Point | Mobile Weather Unit | Branch Break | Planned Fire Line | Planned Secondary Line | Emergency Line | Streams | Forest Boundary | Wilderness |
| Helispot | Repeater | Sheriff Repeater | Aerial Retardant Drop | | | | | |