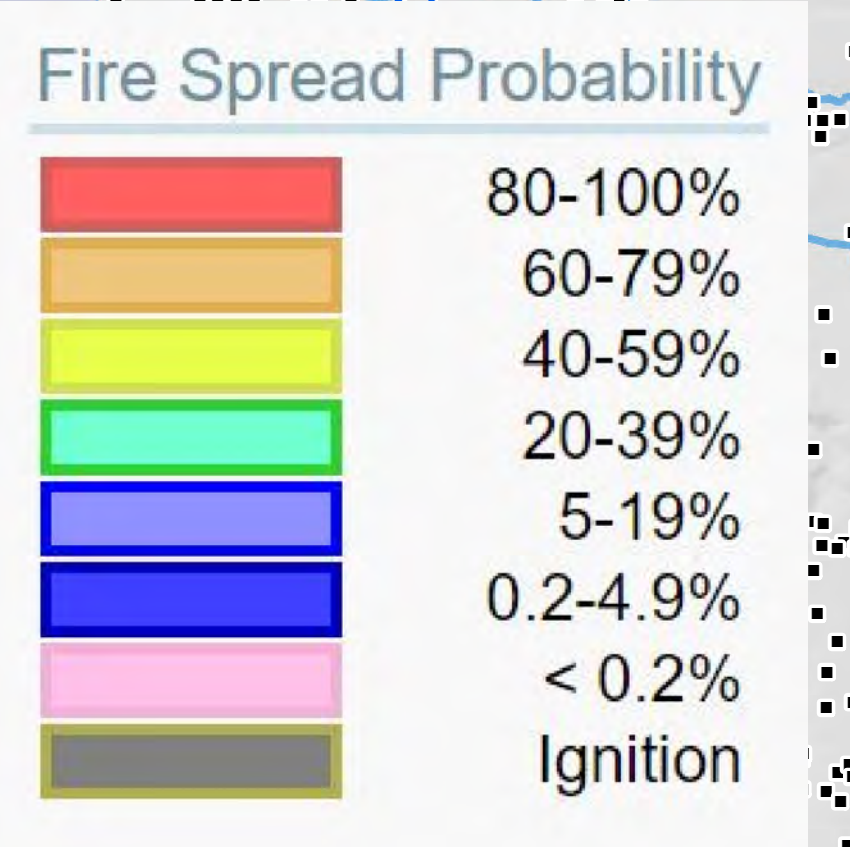
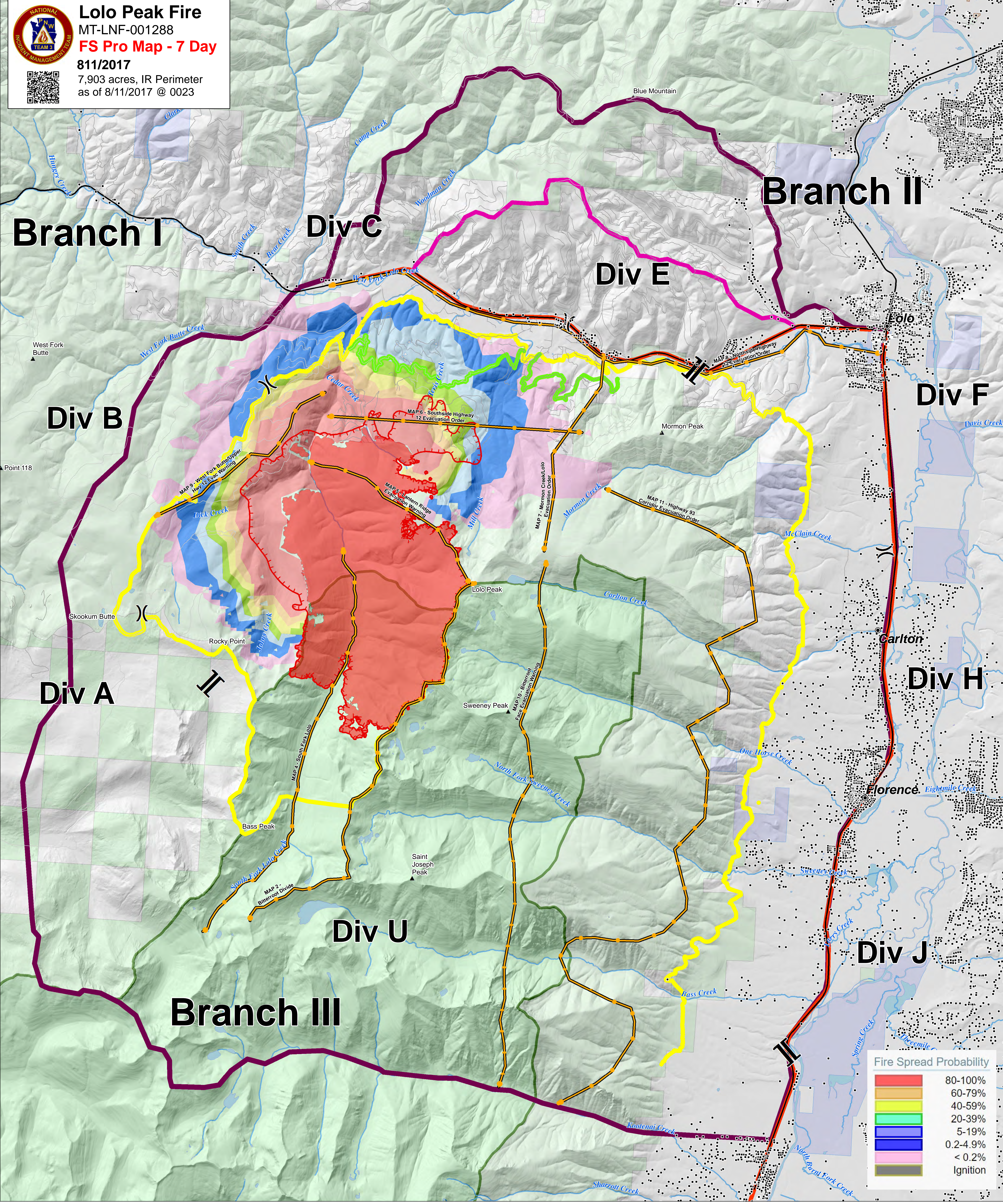




Lolo Peak Fire
 MT-LNF-001288
FS Pro Map - 7 Day
 8/11/2017
 7,903 acres, IR Perimeter
 as of 8/11/2017 @ 0023



- | | | | | | |
|--|-------------------------------|-------------------------|--------------------------|---------------|---------------------|
| | Division Break | Contingency Type | | Other Federal | Ownership |
| | Branch Break | | Primary Line | | State |
| | Uncontrolled Fire Edge | | Alternate Line | | US Forest Service |
| | Wildfire Daily Fire Perimeter | | Contingency Line | | Wilderness |
| | | | Emergency Line | | WFDSS Planning Area |
| | | | Management Action Points | | |

