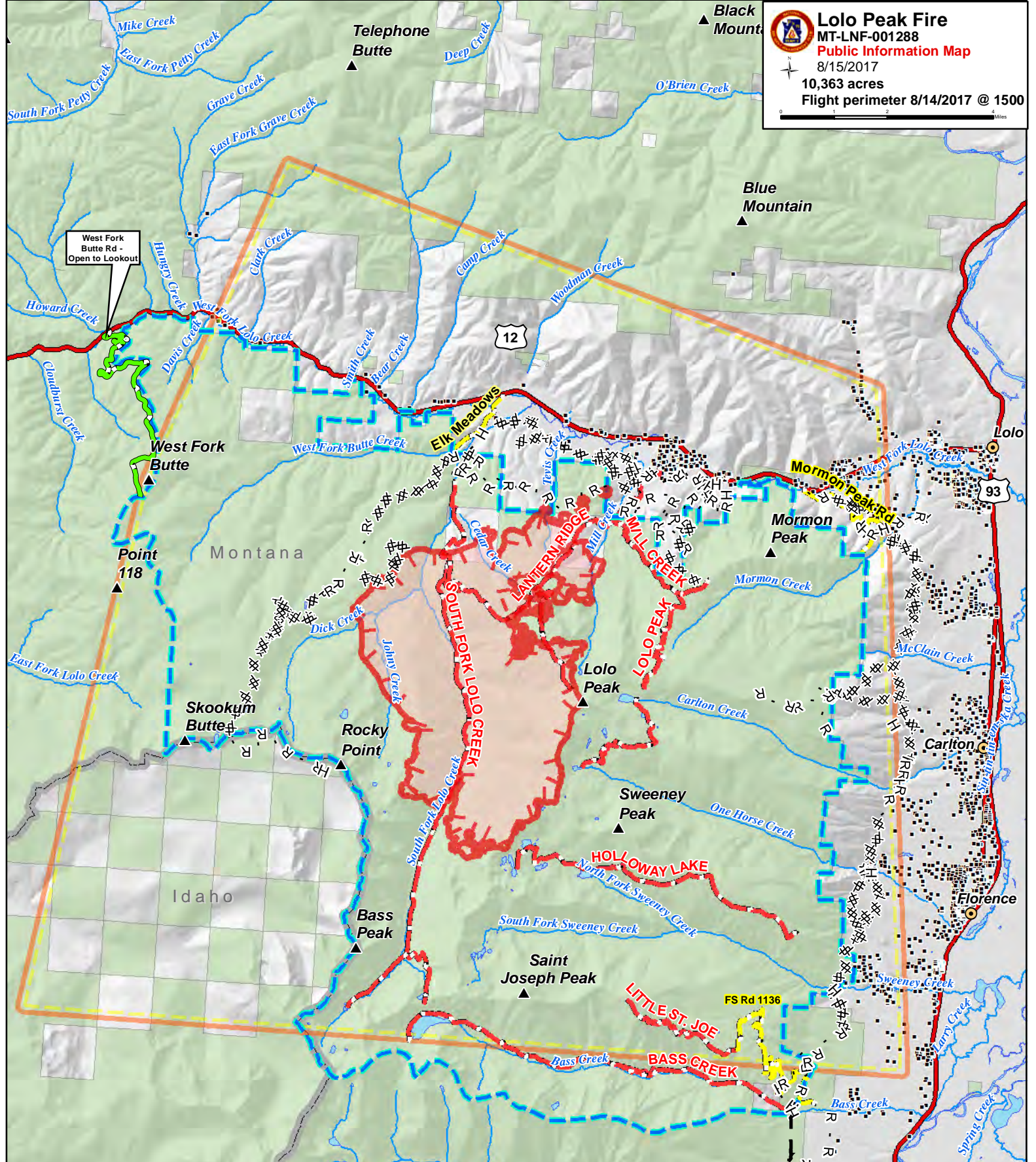


Lolo Peak Fire
 MT-LNF-001288
Public Information Map
 8/15/2017
 10,363 acres
 Flight perimeter 8/14/2017 @ 1500



• Structures	Forest Service	Temporary Flight Restriction - Includes Unmanned Aerial Vehicles (Drones)
West Fork Butte Rd - Open to Lookout	State Boundary	Uncontrolled Fire Edge
Road Closure	Closure Area	Fire Perimeter
Trail Closures		