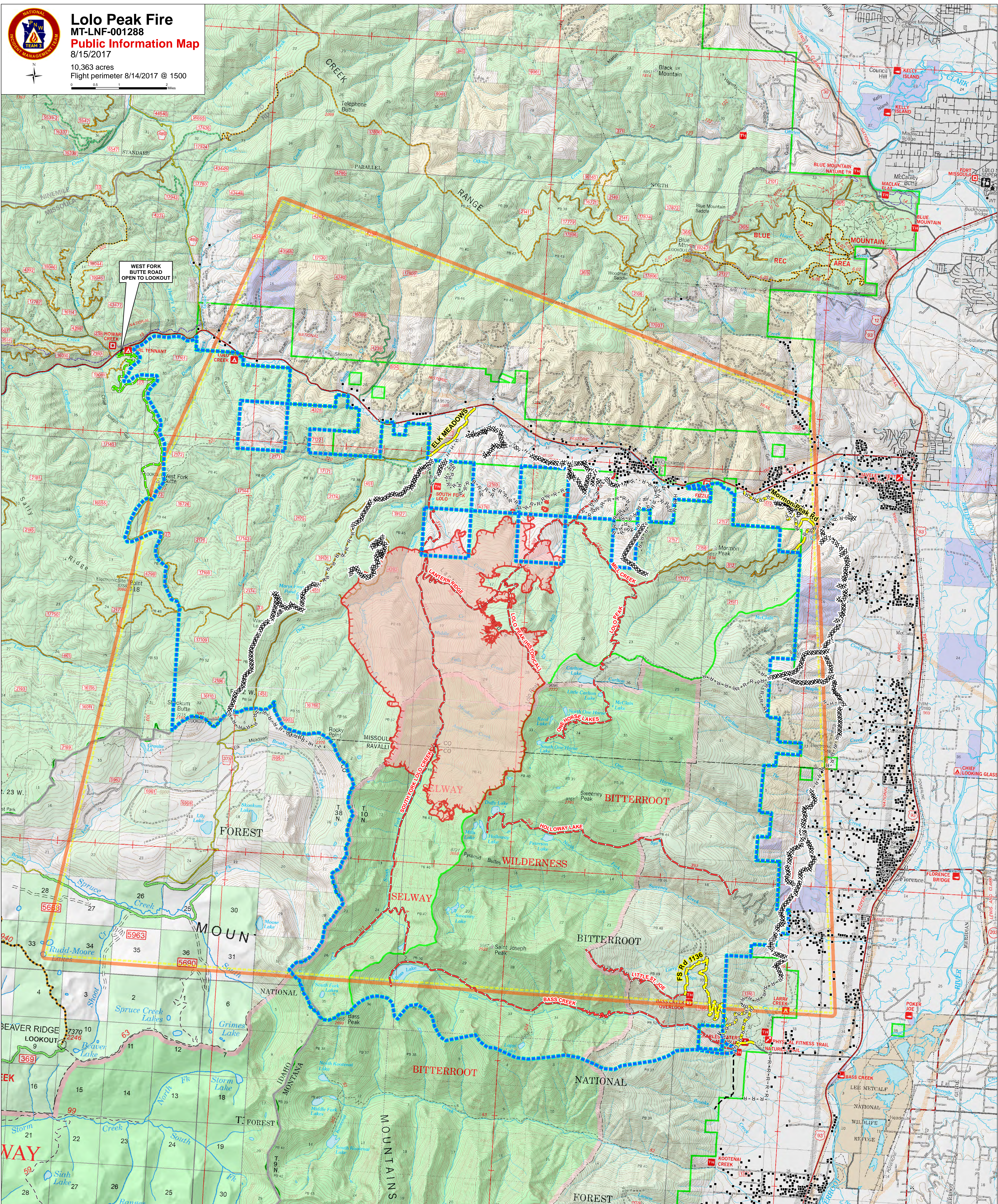




**Lolo Peak Fire**  
 MT-LNF-001288  
**Public Information Map**  
 8/15/2017  
 10,363 acres  
 Flight perimeter 8/14/2017 @ 1500



WEST FORK BUTTE ROAD OPEN TO LOOKOUT

• Structures	XXXXXXXXXX Completed Dozer Line	Closure Area	Temporary Flight Restriction - Includes Unmanned Aerial Vehicles (Drones)
West Fork Butte Rd - Open to Lookout	----- Completed Hand Line	State Boundary	Fire Perimeter
Road Closure	- - - - - Road as Completed Line	Uncontrolled Fire Edge	
Trail Closures	- - - - - Planned Fire Line		

Stevensville  
 MISSOULA  
 BLUE MOUNTAIN  
 BITTERROOT  
 SELWAY  
 WILDERNESS  
 FOREST