



Lolo Peak Fire

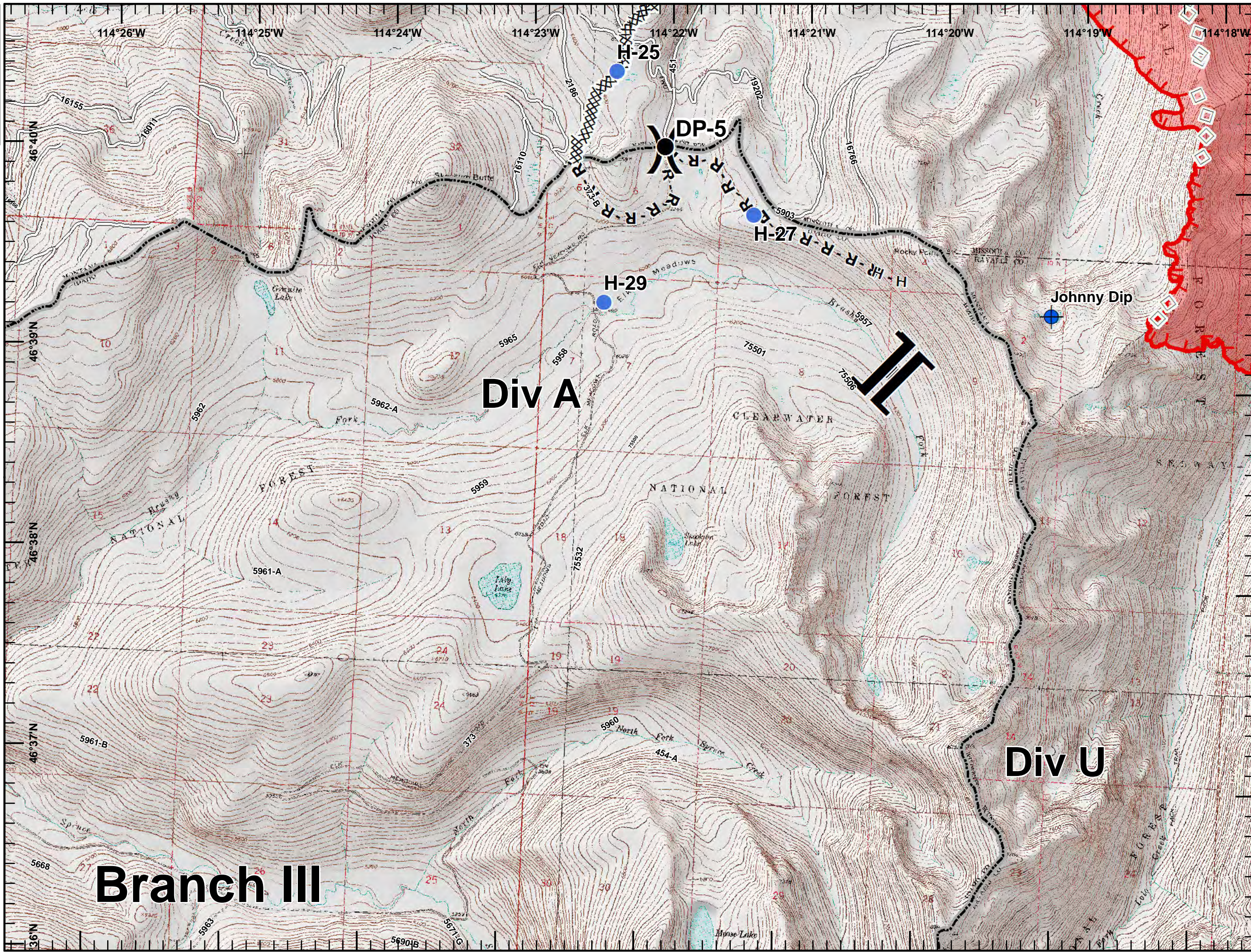
MT-LNF-001288

IAP Map

Page 1, Div A

8/15/2017

10,363 acres, MMA Perimeter as of 8/14/2017 @ 1500



- Dip Site
- Drop Point
- Helispot
- Division Break
- Branch Break

Completed Dozer Line

H - H Completed Hand Line

R - R Road as Completed Line

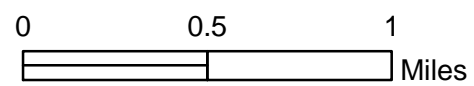
Aerial Retardant Drop

Uncontrolled Fire Edge

Roads

State Boundary

Wildfire Daily Fire Perimeter





Lolo Peak Fire
 MT-LNF-001288
IAP Map
Page 2, Div B
8/15/2017

10,363 acres, MMA Perimeter
 as of 8/14/2017 @ 1500



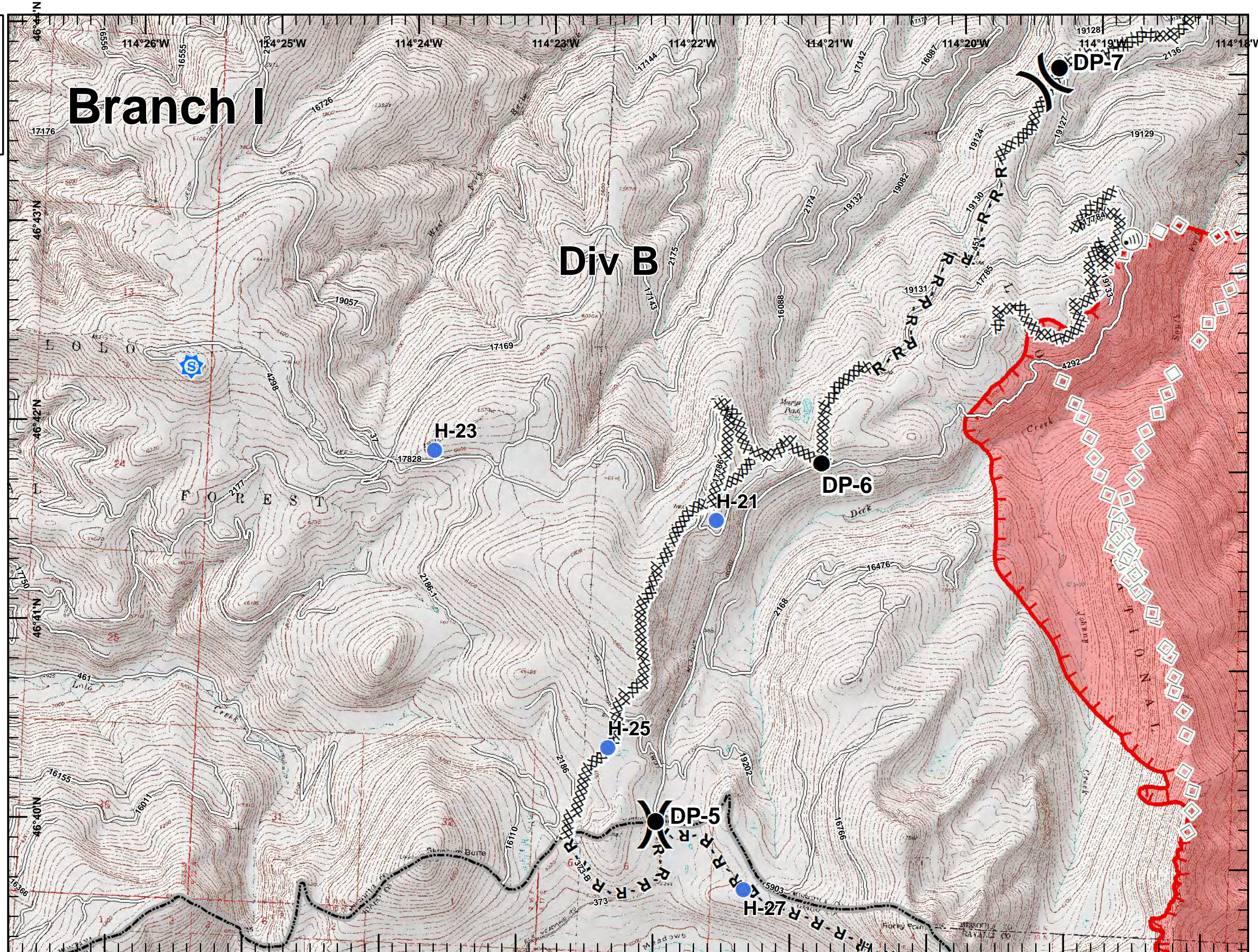
Branch I

Div B

- Sheriff_Rptr
- Drop Point
- Helispot
- Internet Access
- Lookout
- Division Break
- Completed Dozer Line
- H - H Completed Hand Line
- R - R Road as Completed Line
- Aerial Retardant Drop
- Uncontrolled Fire Edge
- Roads
- State Boundary
- Wildfire Daily Fire Perimeter



0 0.5 1
 Miles





Lolo Peak Fire
 MT-LNF-001288
IAP Map
 Page 3, Div C
 8/15/2017

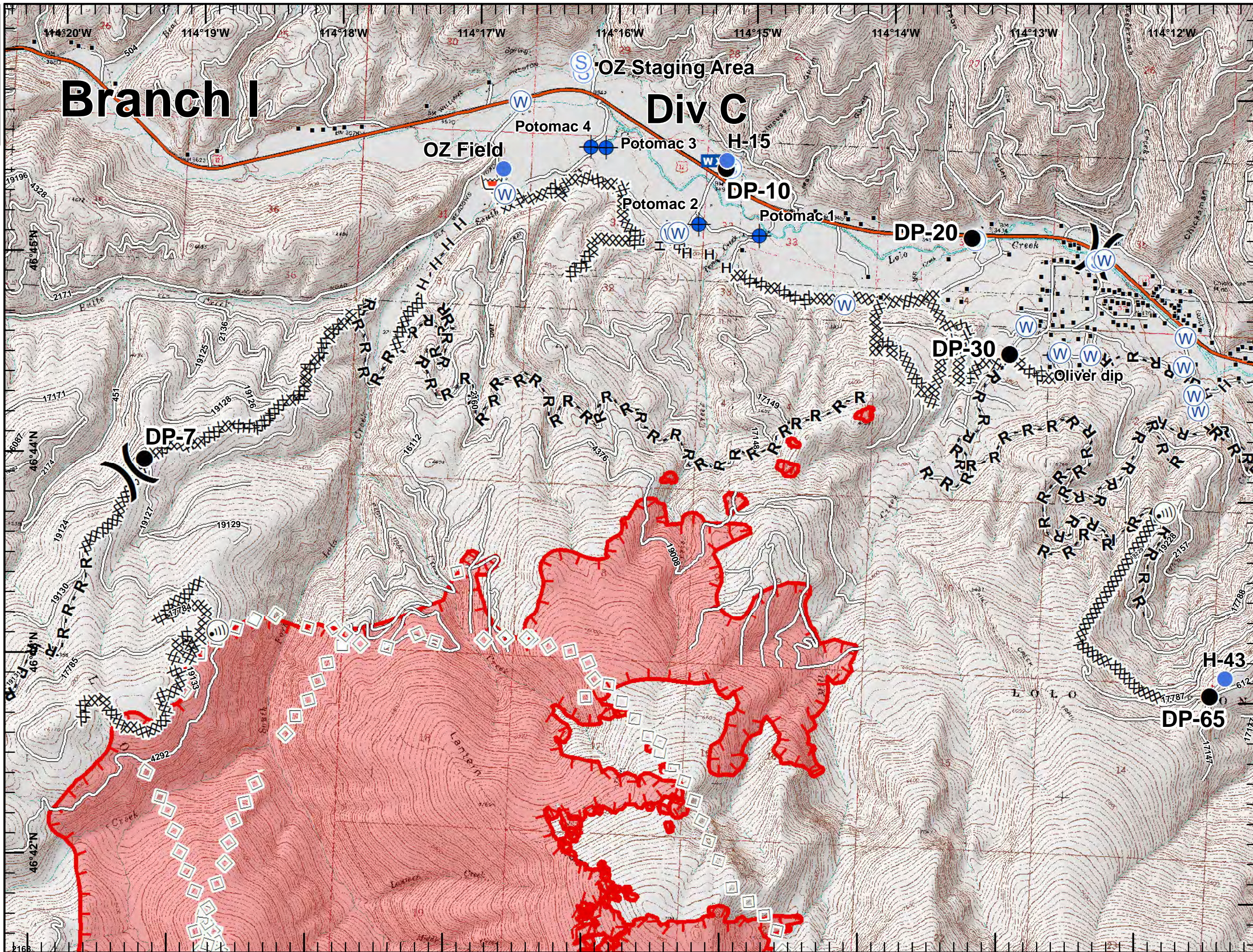
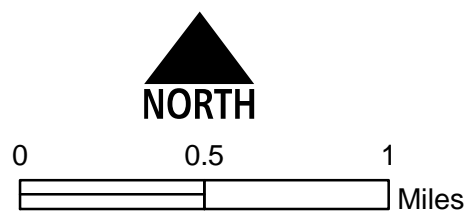
10,363 acres, MMA Perimeter
 as of 8/14/2017 @ 1500



Branch I

Div C

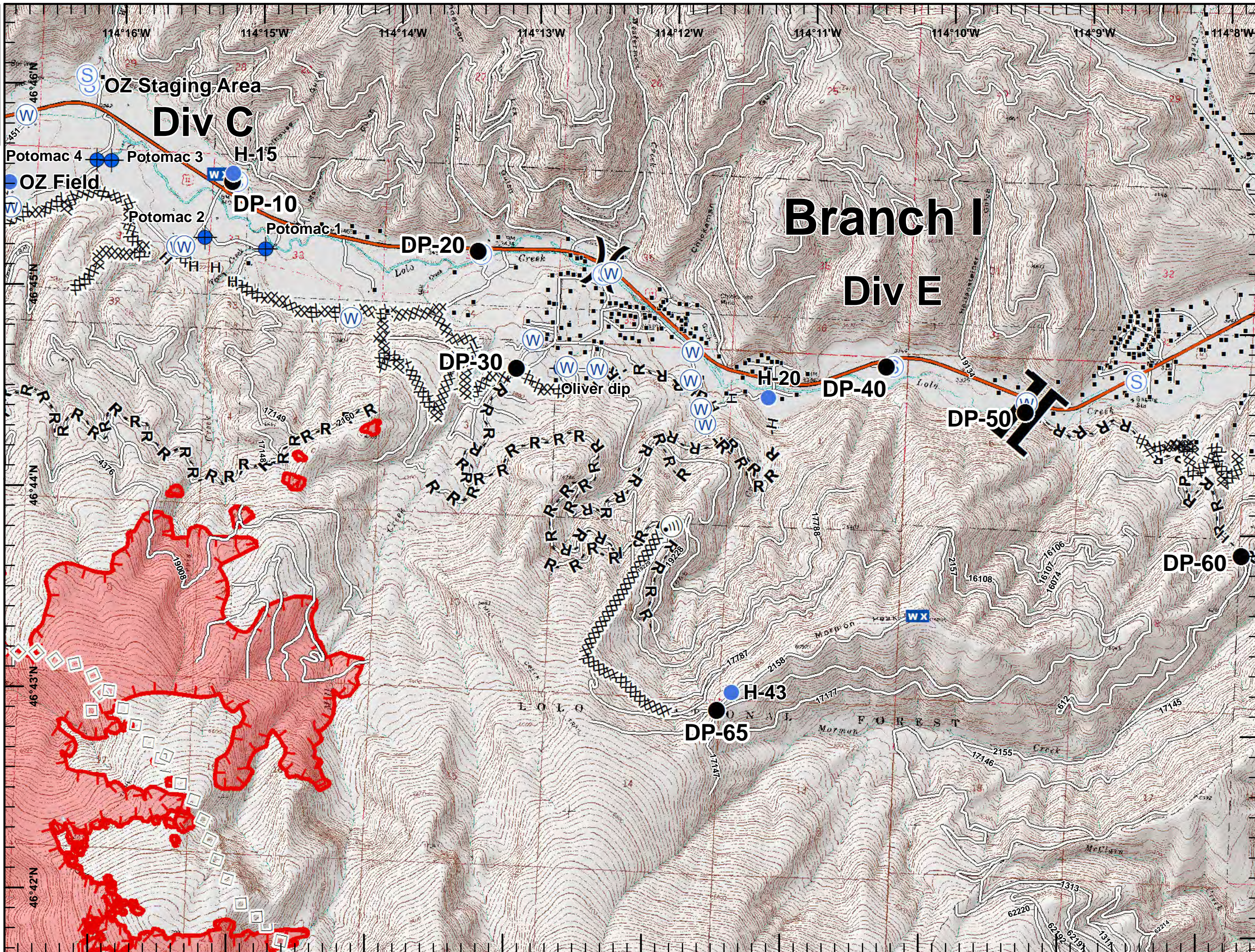
- Dip Site
- Drop Point
- Helispot
- Internet Access
- Mobile Weather Unit
- Retardant/Mud Pit
- Staging Area
- Water Source
- Division Break
- Structures
- MT_Structures
- Completed Dozer Line
- H - HCompleted Hand Line
- R - R Road as Completed Line
- Aerial Retardant Drop
- Uncontrolled Fire Edge
- Interstate and Highways
- Roads
- State Boundary
- Wildfire Daily Fire Perimeter



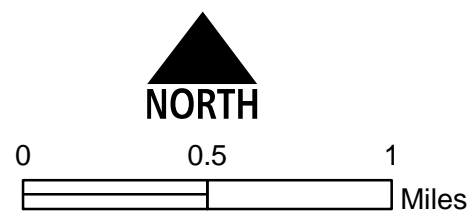


Lolo Peak Fire
 MT-LNF-001288
IAP Map
 Page 4, Div E
 8/15/2017

10,363 acres, MMA Perimeter
 as of 8/14/2017 @ 1500



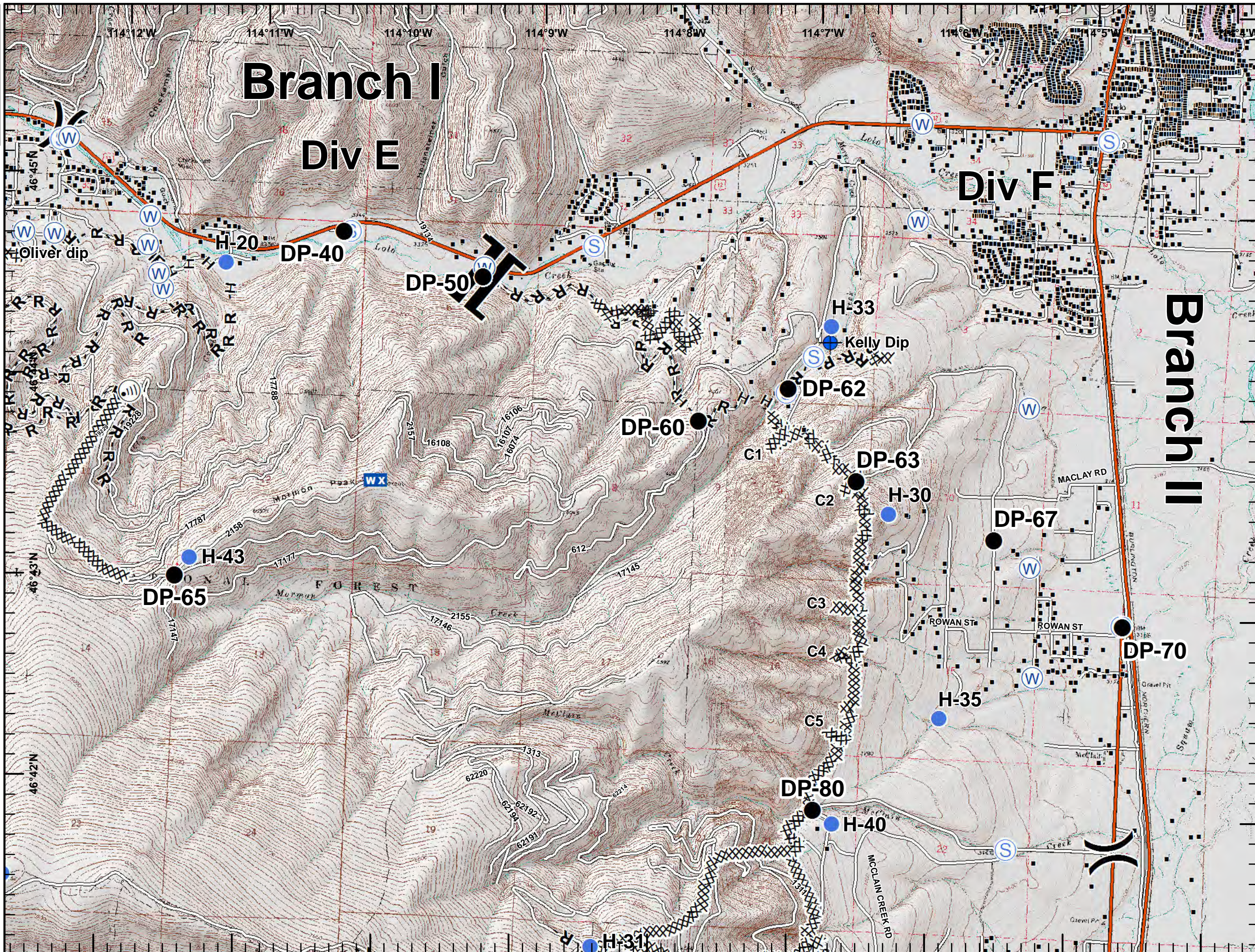
- Dip Site
- Drop Point
- Helispot
- Internet Access
- Mobile Weather Unit
- Retardant/Mud Pit
- Staging Area
- Water Source
- Division Break
- Branch Break
- Structures
- MT_Structures
- Completed Dozer Line
- H - HCompleted Hand Line
- R - R Road as Completed Line
- Aerial Retardant Drop
- Uncontrolled Fire Edge
- Interstate and Highways
- Roads
- State Boundary
- Wildfire Daily Fire Perimeter



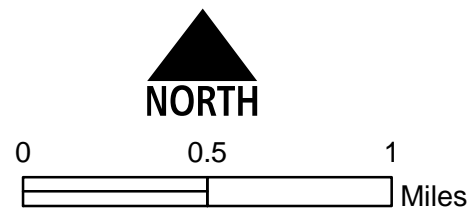


Lolo Peak Fire
 MT-LNF-001288
IAP Map
 Page 5, Div F
 8/15/2017

10,363 acres, MMA Perimeter
 as of 8/14/2017 @ 1500



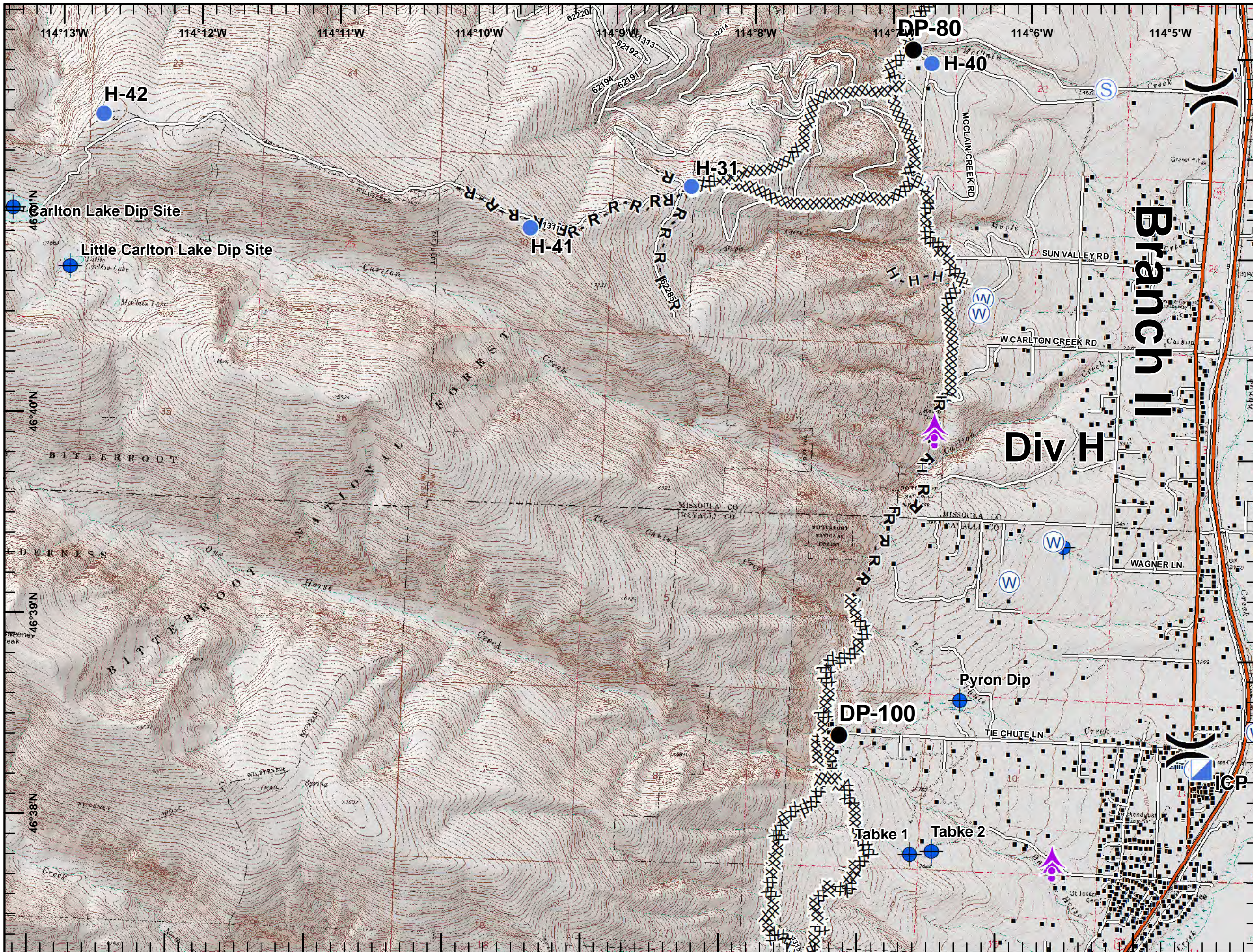
- Dip Site
- Drop Point
- Helispot
- Internet Access
- Mobile Weather Unit
- Staging Area
- Water Source
- Division Break
- Branch Break
- Structures
- MT_Structures
- Completed Dozer Line
- H - HCompleted Hand Line
- R - RRoad as Completed Line
- Interstate and Highways
- Roads
- State Boundary





Lolo Peak Fire
 MT-LNF-001288
IAP Map
 Page 6, Div H
 8/15/2017

10,363 acres, MMA Perimeter
 as of 8/14/2017 @ 1500



Aerial Hazard

Camp

Dip Site

Drop Point

Helispot

ICP

Staging Area

Water Source

Division Break

Structures

MT_Structures

Completed Dozer Line

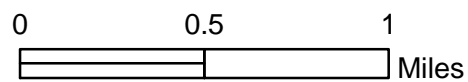
Completed Hand Line

Road as Completed Line

Interstate and Highways

Roads

State Boundary





Lolo Peak Fire

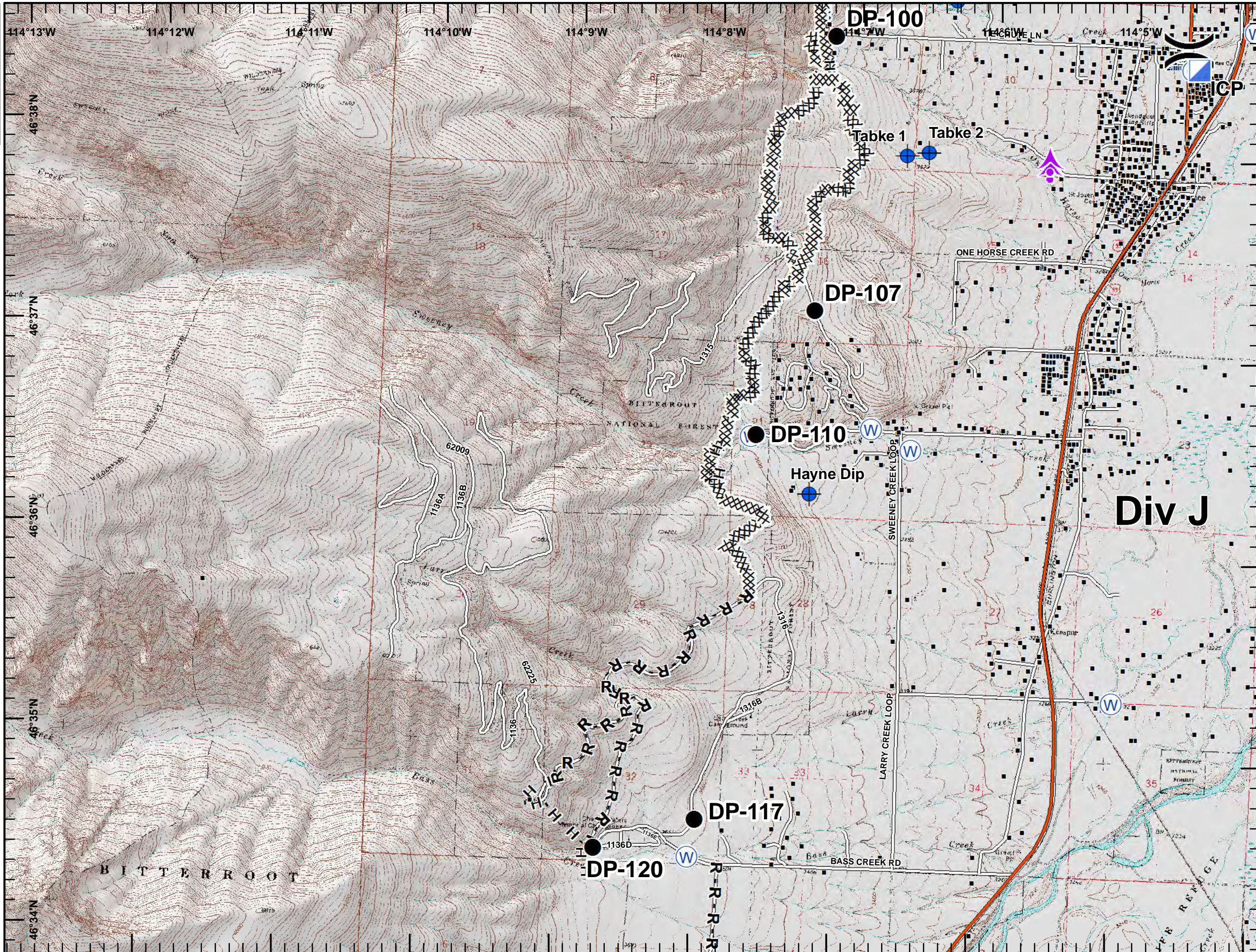
MT-LNF-001288

IAP Map

Page 7, Div J

8/15/2017

10,363 acres, MMA Perimeter
as of 8/14/2017 @ 1500



Aerial Hazard

Camp

Dip Site

Drop Point

ICP

Water Source

Division Break

Structures

MT_Structures

Completed Dozer Line

Completed Hand Line

Road as Completed Line

Interstate and Highways

Roads

State Boundary

State Boundary

State Boundary



NORTH

