



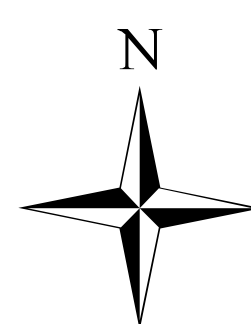
Lolo Peak Fire

MT-LNF-001288

Briefing Map

8/16/2017

10,363 acres, MMA Perimeter
8/14/17 @ 1500



0 1 2 4 Miles

Branch I

Branch II

Div C

Div E

Div F

Div B

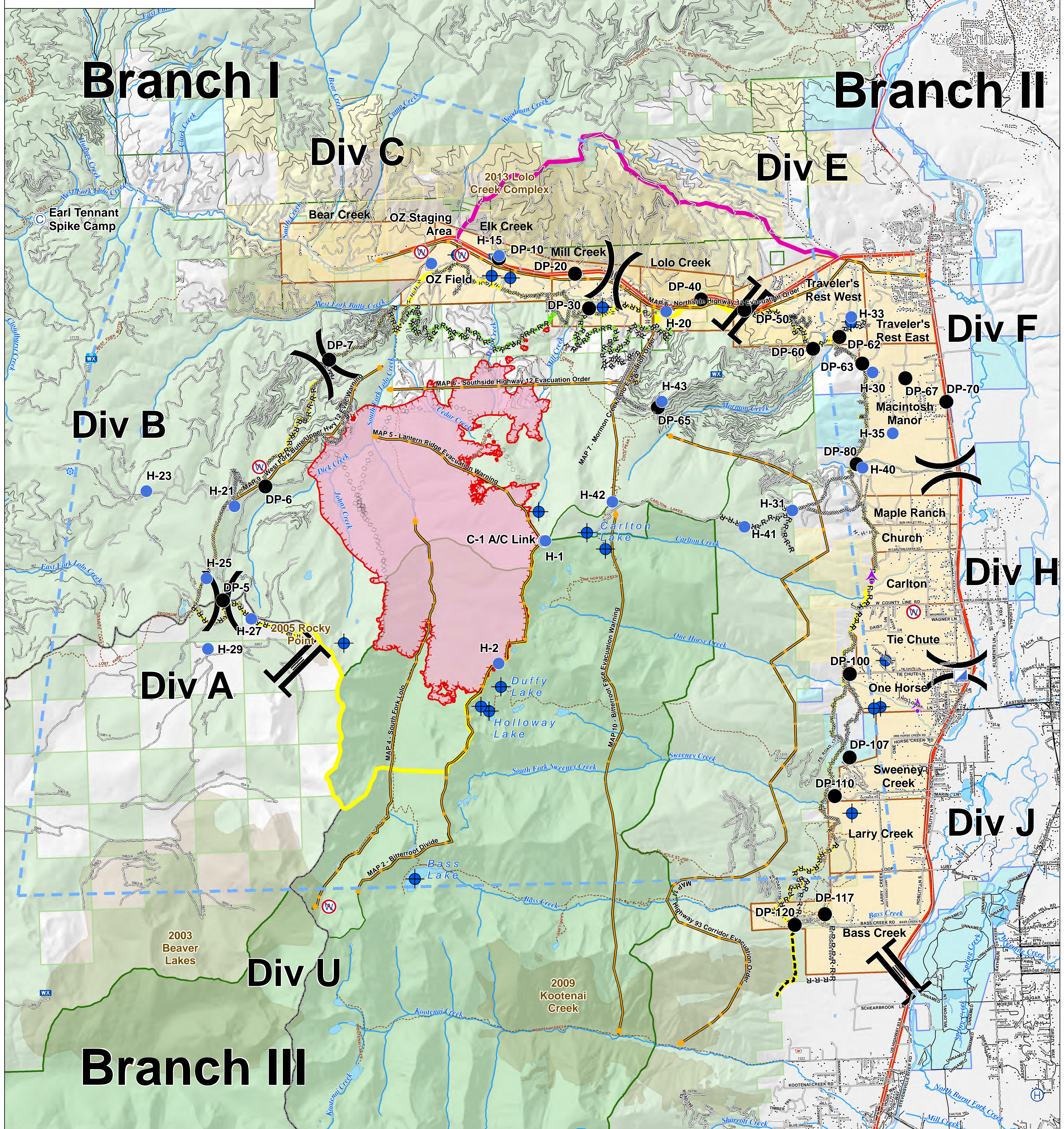
Div H

Div A

Div J

Div U

Branch III



Sheriff's Repeater	Camp	Mobile Weather Unit	Branch Break	TFR	Primary Line	Evacuation Zones	State
Drop Point	Fire Location	Repeater	Completed Dozer Line	Management Action Points	Alternate Line	Streams	US Forest Service
Helispot	Helibase	Retardant/Mud Pit	Completed Hand Line	Uncontrolled Fire Edge	Contingency Line	Waterbodies	Weyerhaeuser
Dip Site	ICP	Restricted Water Source	Road as Completed Line	Highway	Emergency Line	States	Administrative Forest
Aerial Hazard	Lookout	Division Break	Planned Fire Line	County	Trails	Wilderness	Other Federal
		Aerial Retardant Drop	Local Roads	Structures			

