

Lolo Peak Fire Briefing Area Map

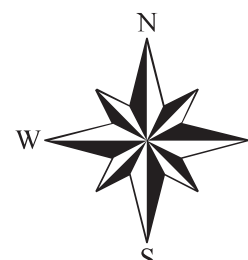
MT-LNF-001288
 August 17, 2017
 11,287 Acres

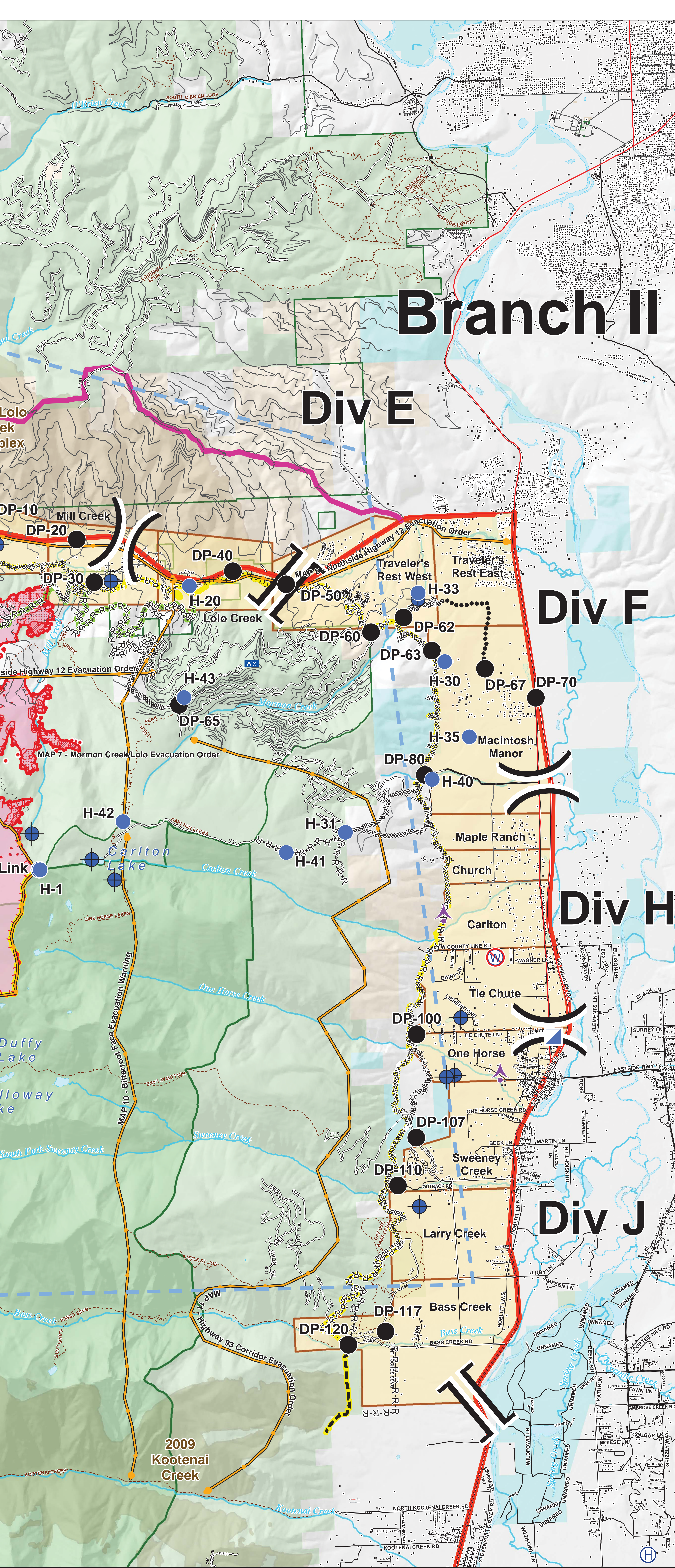


IR data from 8/15/2017 at 2315 hrs.

- IR Isolated Heat Sources
- IR Intense Heat
- IR Scattered Heat

- Sheriff's Repeater
- Drop Point
- Helispot
- Dip Site
- Aerial Hazard
- Camp
- Fire Location
- Helibase
- ICP
- Lookout
- Mobile Weather Unit
- Repeater
- Retardant/Mud Pit
- Restricted Water Source





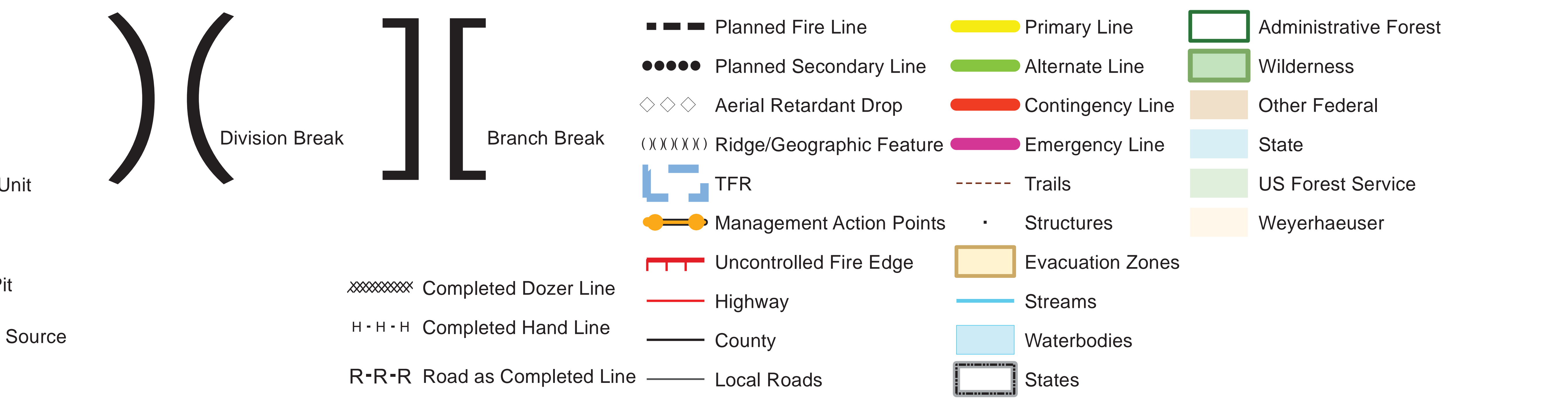
Branch II

Div E

Div F

Div H

Div J



Unit

Unit

Source