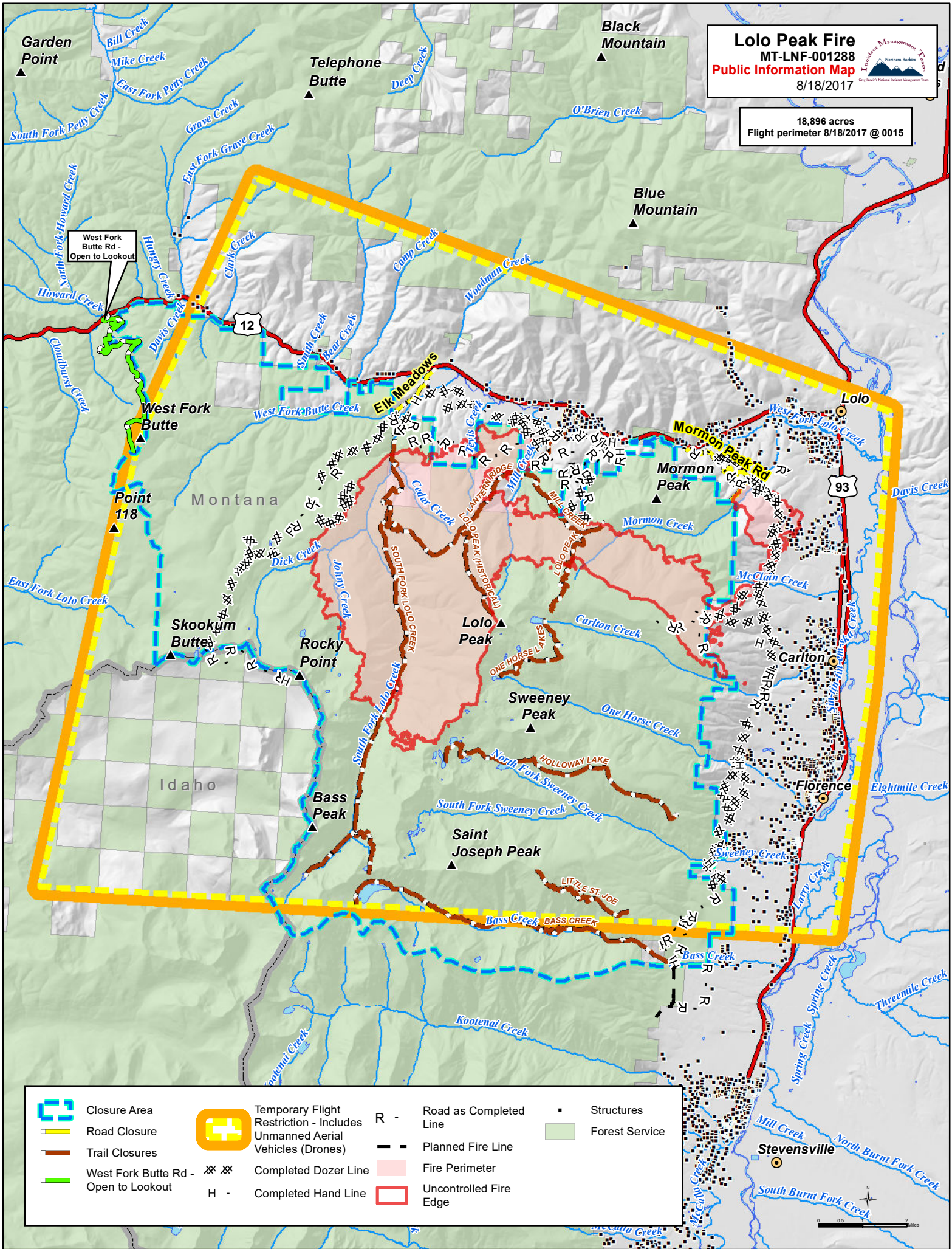


Lolo Peak Fire
 MT-LNF-001288
Public Information Map
 8/18/2017



18,896 acres
 Flight perimeter 8/18/2017 @ 0015



	Closure Area		Temporary Flight Restriction - Includes Unmanned Aerial Vehicles (Drones)	R -	Road as Completed Line	▪	Structures
	Road Closure		Completed Dozer Line	---	Planned Fire Line	■	Forest Service
	Trail Closures	XX XX	Completed Hand Line		Fire Perimeter		Uncontrolled Fire Edge
	West Fork Butte Rd - Open to Lookout	H -					

