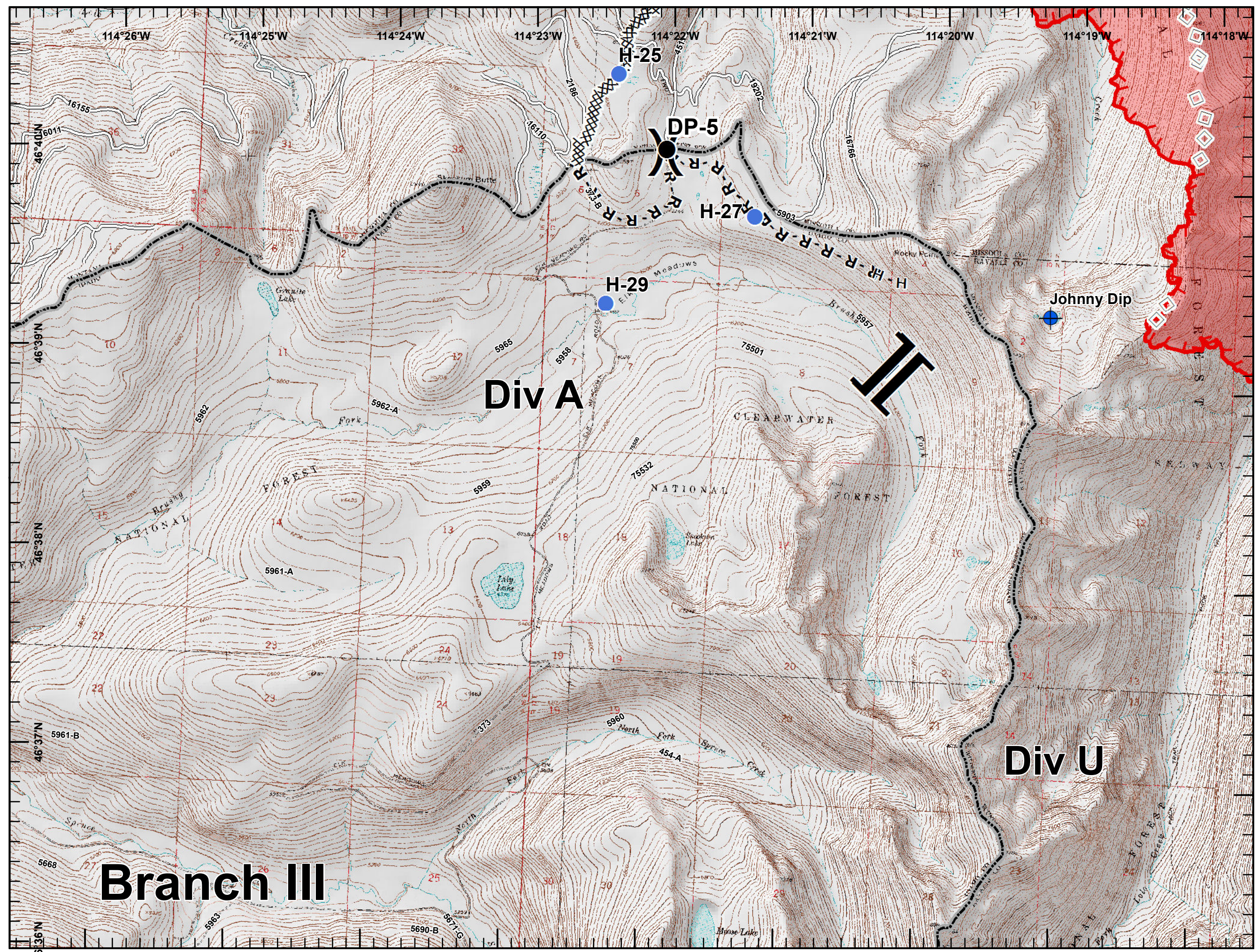
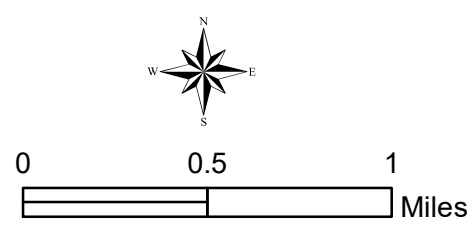


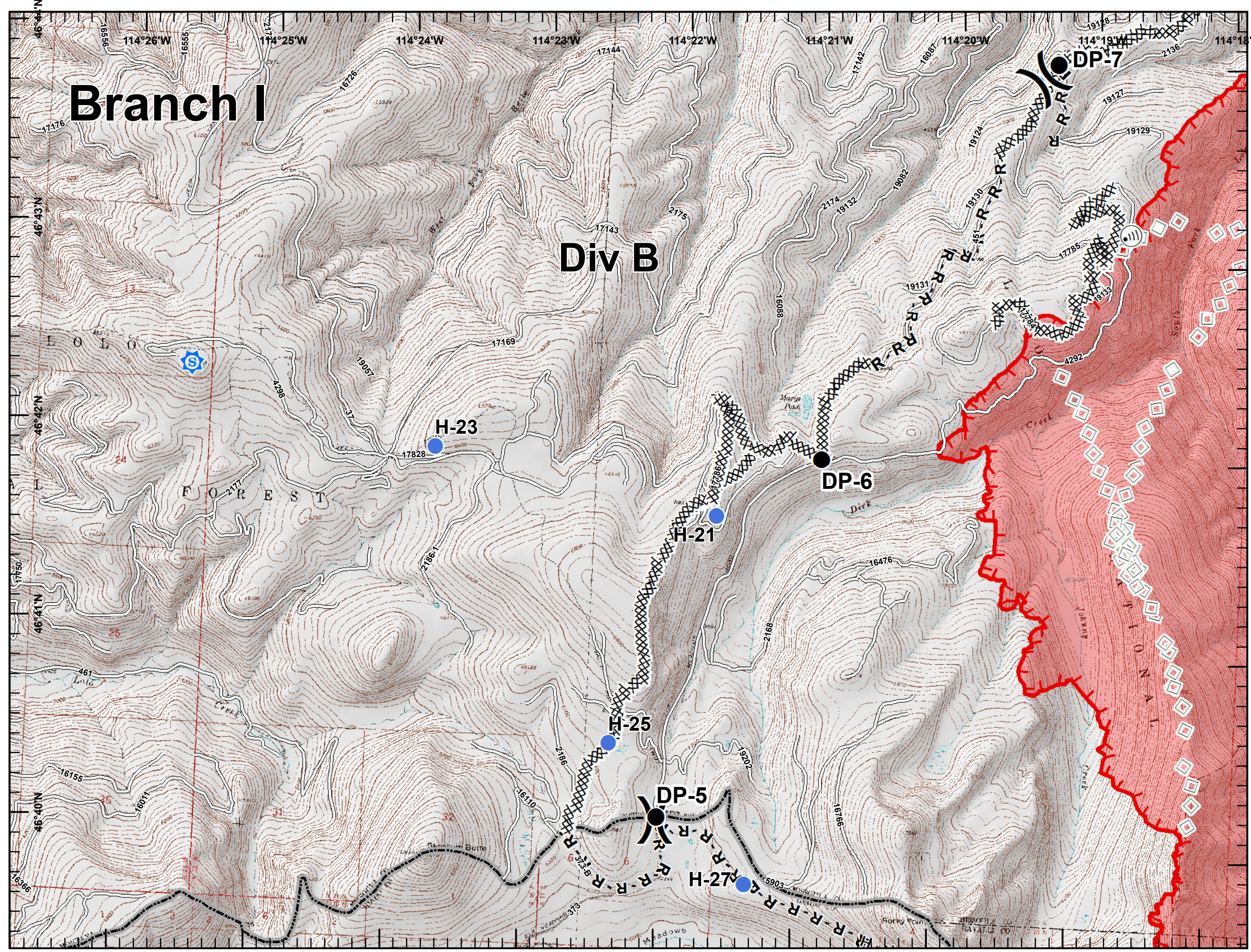
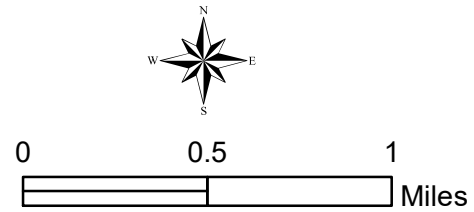


- Dip Site
- Drop Point
- Helispot
- Division Break
- Branch Break
- Completed Dozer Line
- Completed Hand Line
- Road as Completed Line
- Aerial Retardant Drop
- Roads
- State Boundary
- Uncontrolled Fire Edge
- Wildfire Daily Fire Perimeter



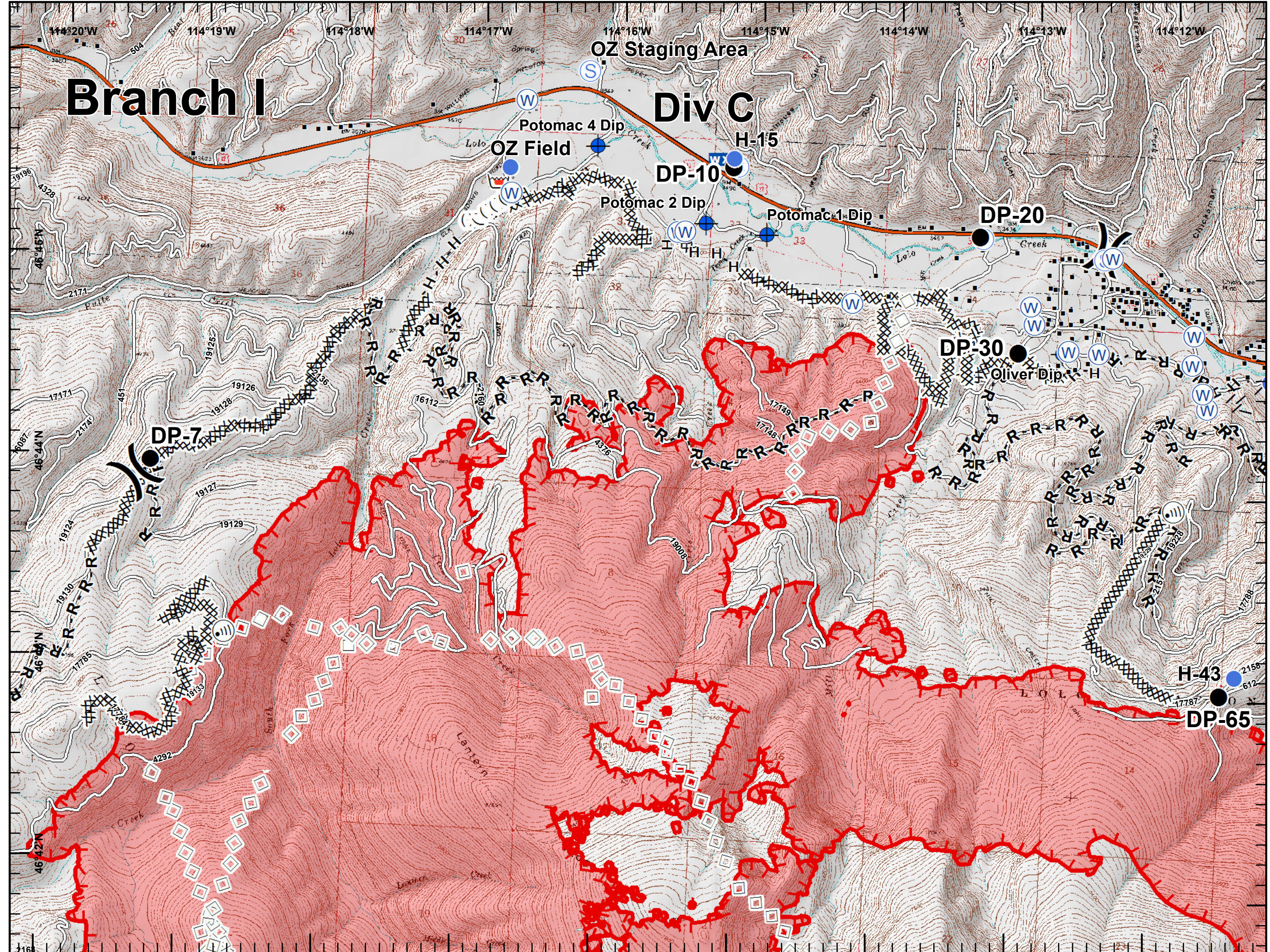
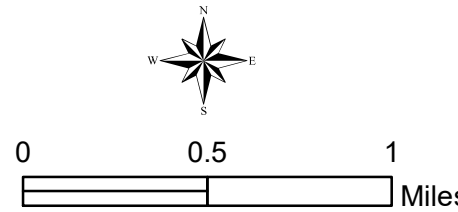


- Sheriff_Rptr
- Drop Point
- Helispot
- Internet Access
- Lookout
- Division Break
- Completed Dozer Line
- Completed Hand Line
- Road as Completed Line
- Aerial Retardant Drop
- Roads
- State Boundary
- Uncontrolled Fire Edge
- Wildfire Daily Fire Perimeter

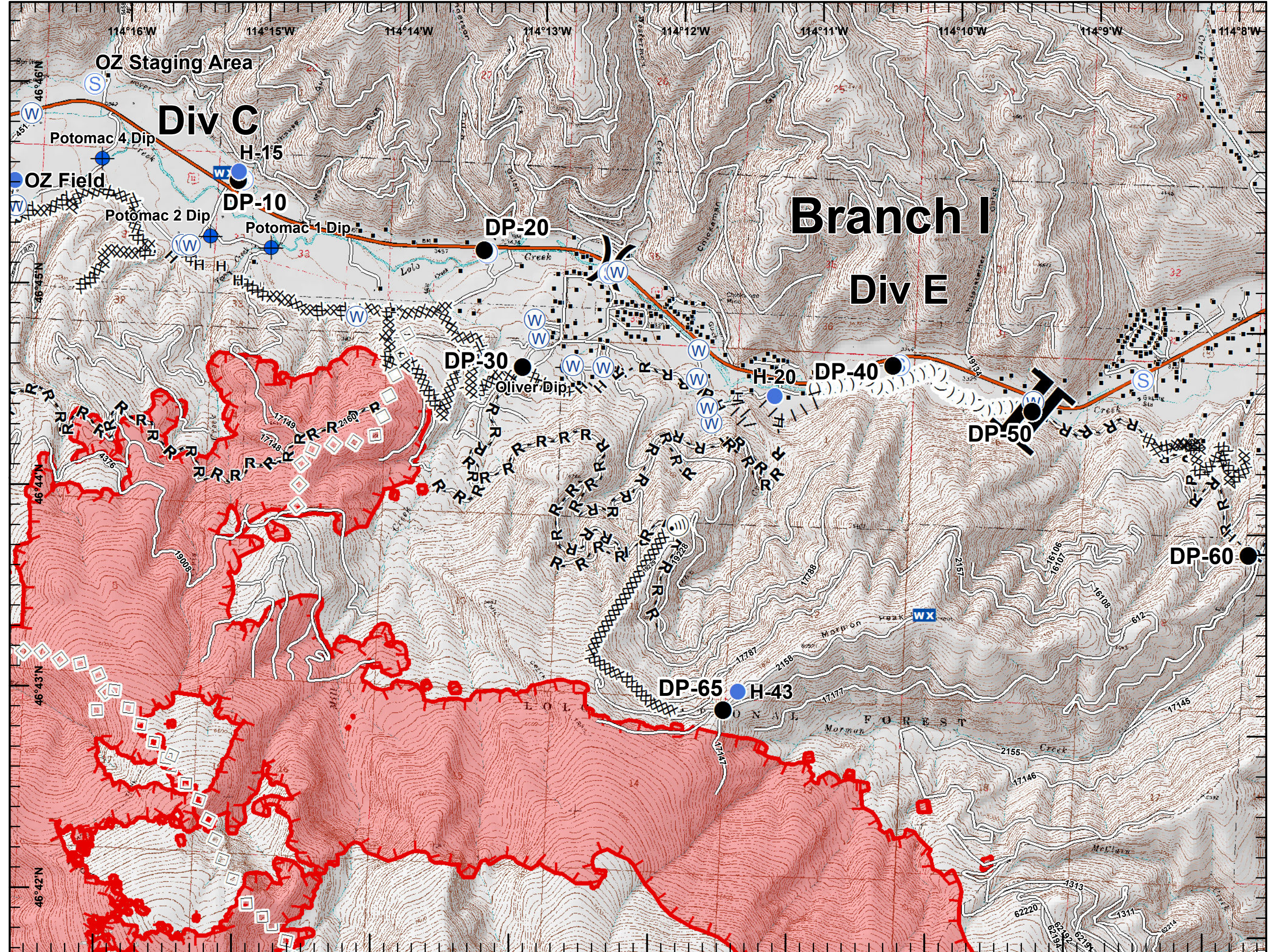
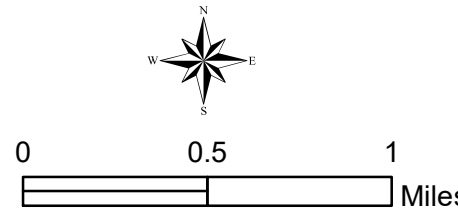




- Dip Site
- Drop Point
- Helispot
- Internet Access
- Mobile Weather Unit
- Retardant/Mud Pit
- Staging Area
- Water Source
- Division Break
- Structures
- Completed Dozer Line
- Completed Hand Line
- Road as Completed Line
- Proposed Burnout
- Aerial Retardant Drop
- Ridge/Geographic Feature
- Interstate and Highways
- Roads
- State Boundary
- Uncontrolled Fire Edge
- Wildfire Daily Fire Perimeter

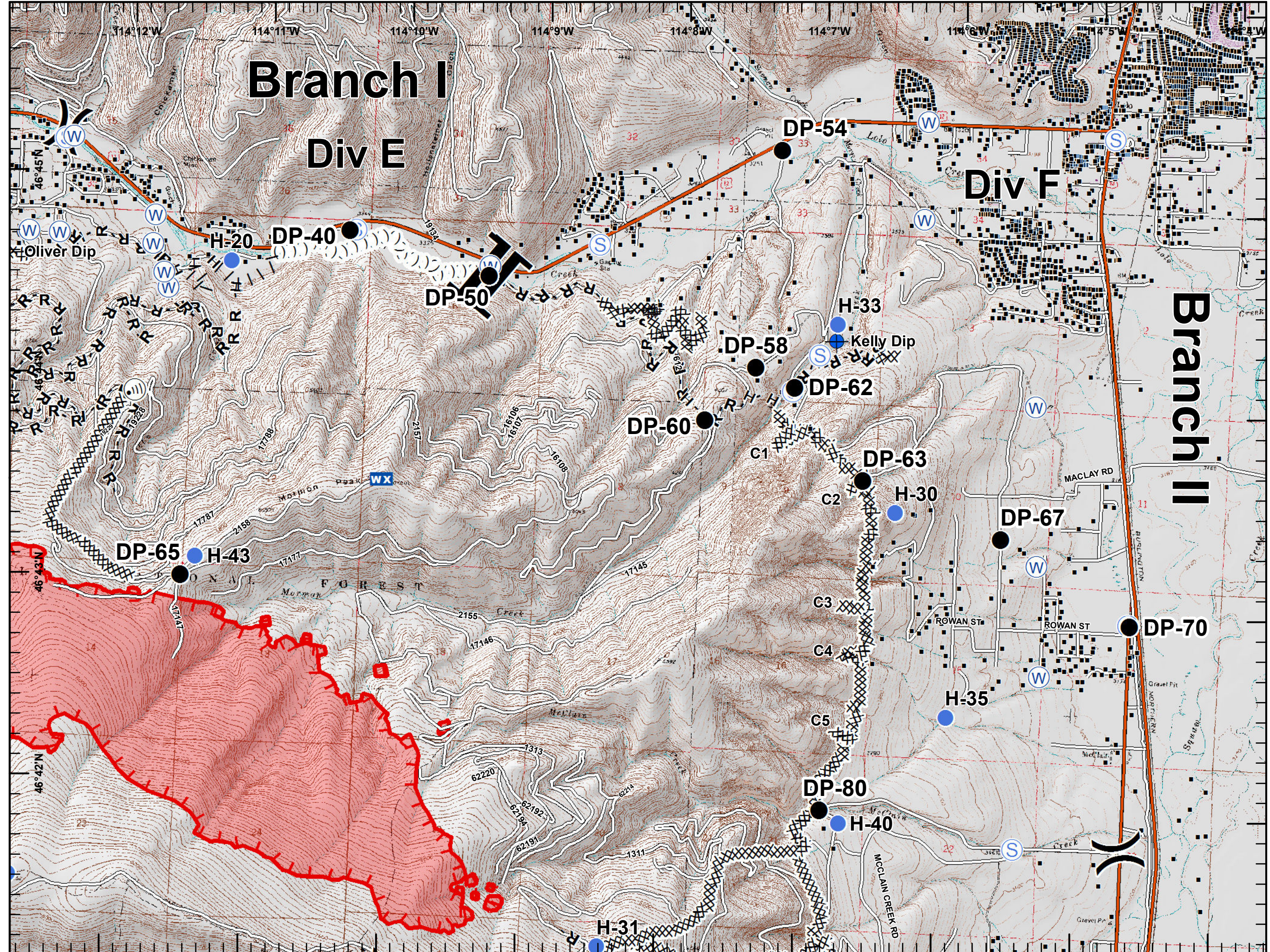
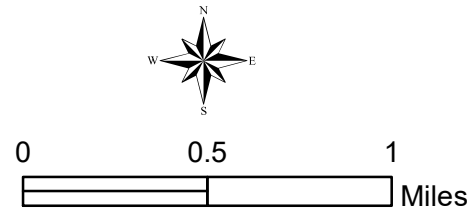


- Incident Management Team**
 Northern Rockies
 Greg Poncin's National Incident Management Team
- Helispot
 - Internet Access
 - Mobile Weather Unit
 - Retardant/Mud Pit
 - Staging Area
 - Water Source
 - Division Break
 - Branch Break
 - Structures
 - Completed Dozer Line
 - Completed Hand Line
 - Road as Completed Line
 - Proposed Burnout
 - Aerial Retardant Drop
 - Ridge/Geographic Feature
 - Interstate and Highways
 - Roads
 - State Boundary
 - Uncontrolled Fire Edge
 - Wildfire Daily Fire Perimeter











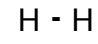








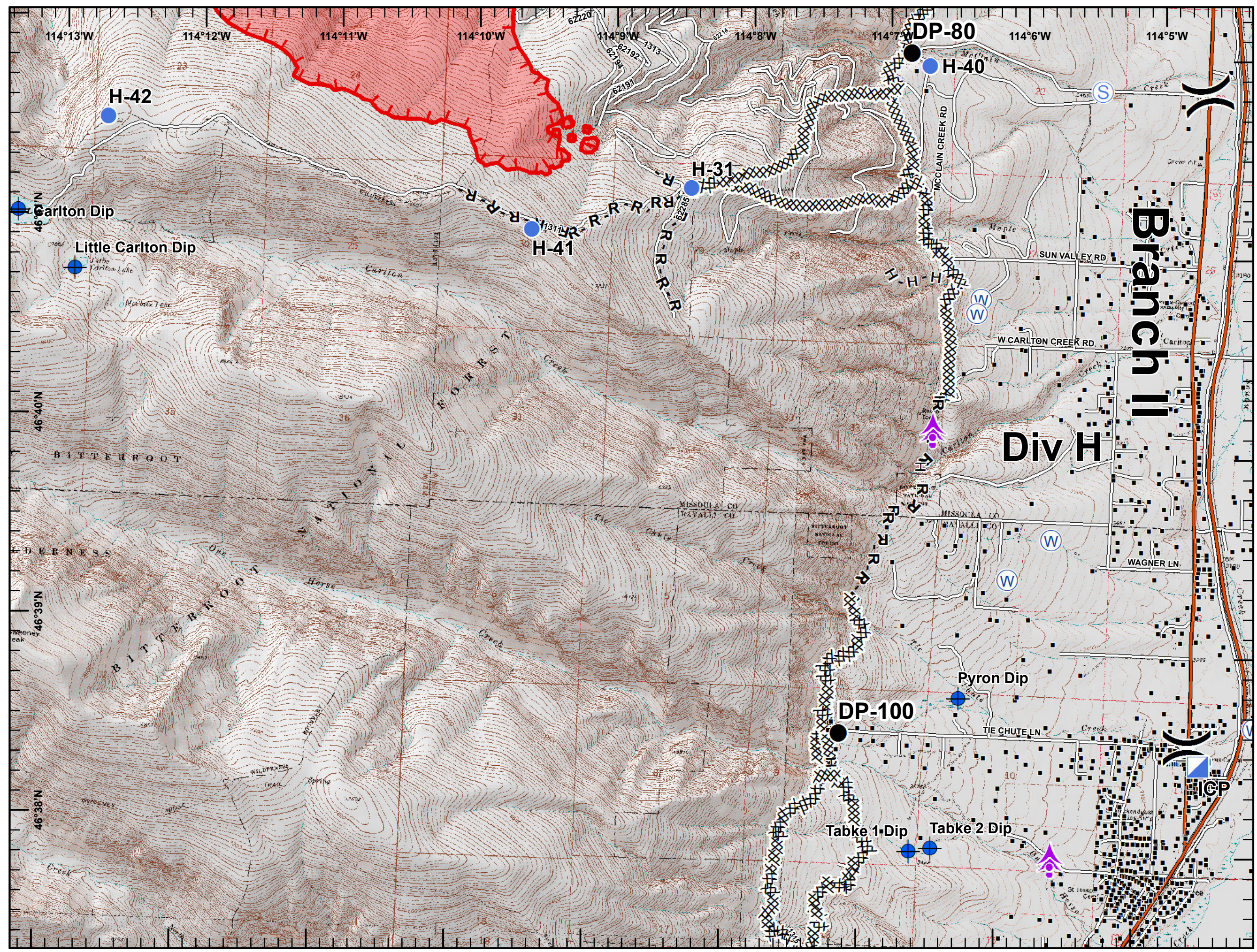
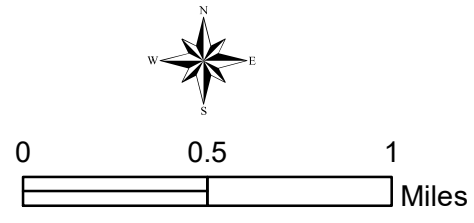


- Dip Site
- Drop Point
- Helispot
- Internet Access
- Mobile Weather Unit
- Staging Area
- Water Source
- Division Break
- Branch Break
- Structures
- Completed Dozer Line
- H - H Completed Hand Line
- R - R Road as Completed Line
- Proposed Burnout
- Ridge/Geographic Feature
- Interstate and Highways
- Roads
- State Boundary
- Uncontrolled Fire Edge
- Wildfire Daily Fire Perimeter










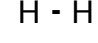
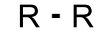







-  Aerial Hazard
-  Dip Site
-  Drop Point
-  Helispot
-  ICP
-  Staging Area
-  Water Source
-  Division Break
-  Structures
-  Completed Dozer Line
-  H - H Completed Hand Line
-  R - R Road as Completed Line
-  Interstate and Highways
-  Roads
-  State Boundary
-  Uncontrolled Fire Edge
-  Wildfire Daily Fire Perimeter





-  Aerial Hazard
-  Dip Site
-  Drop Point
-  ICP
-  Retardant/Mud Pit
-  Water Source
-  Division Break
-  Structures
-  Completed Dozer Line
-  H - H Completed Hand Line
-  R - R Road as Completed Line
-  Interstate and Highways
-  Roads
-  State Boundary

