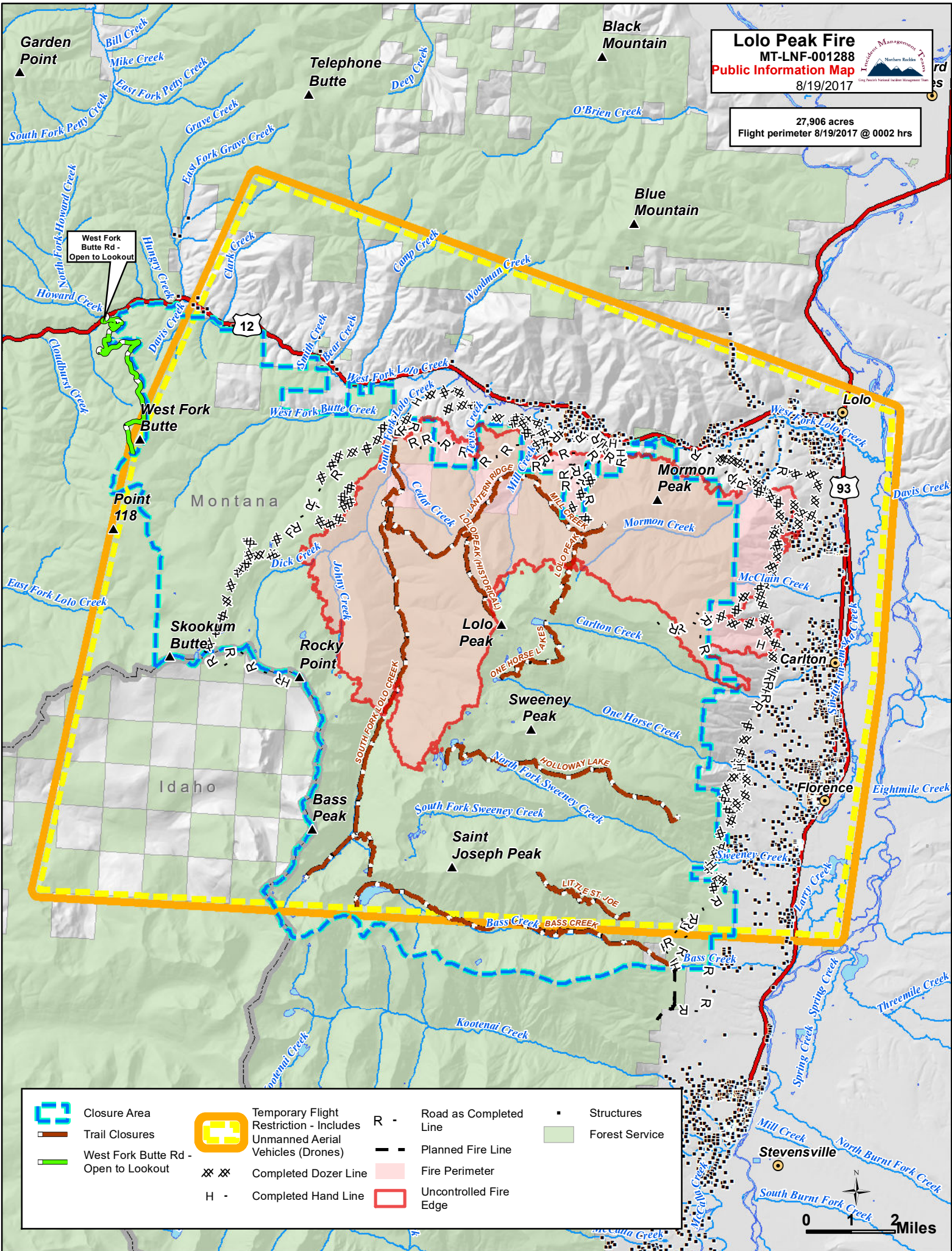


Lolo Peak Fire
 MT-LNF-001288
Public Information Map
 8/19/2017



27,906 acres
 Flight perimeter 8/19/2017 @ 0002 hrs



	Closure Area		Temporary Flight Restriction - Includes Unmanned Aerial Vehicles (Drones)	R -	Road as Completed Line	▪	Structures
	Trail Closures		West Fork Butte Rd - Open to Lookout		Planned Fire Line		Forest Service
	Completed Dozer Line		Uncontrolled Fire Edge		Fire Perimeter		
	Completed Hand Line						

