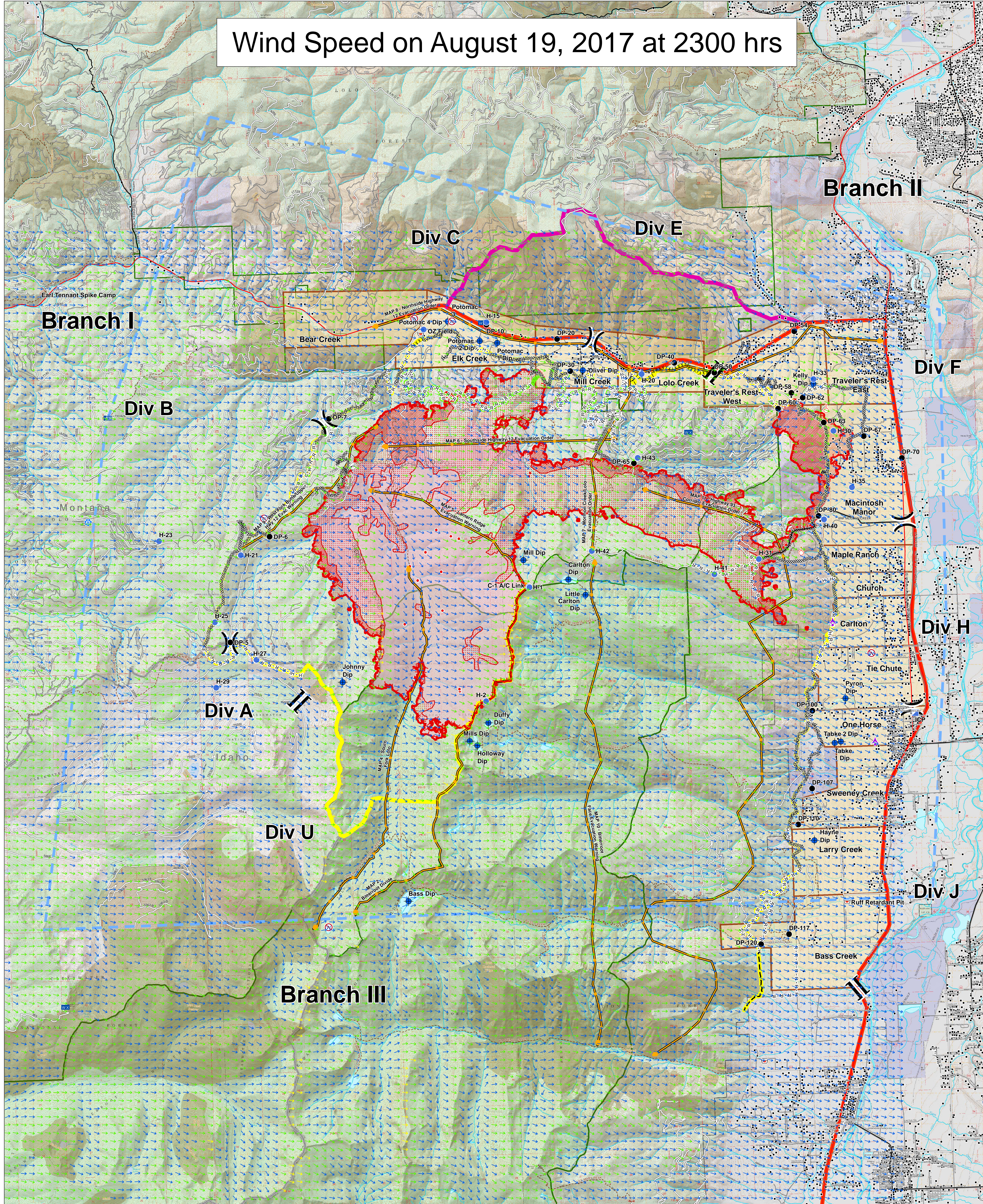


Wind Speed on August 19, 2017 at 2300 hrs

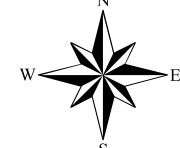


Lolo Peak Fire
Wind Ninja
 MT-LNF-001288
 August 19, 2017
 18,896 Acres



IR data from 8/18/2017 at 0015 hrs.

- IR Isolated Heat Sources
- IR Intense Heat
- IR Scattered Heat



- ▲ Aerial Hazard
- Ⓢ Camp
- ◆ Dip Site
- Drop Point
- ⊕ Helibase
- ⊙ Helispot
- Ⓜ ICP
- Ⓜ Internet Access
- Ⓜ Lookout
- Ⓜ Mobile Weather Unit
- Ⓜ Repeater
- Ⓜ Retardant/Mud Pit
- Ⓜ Spot Fire
- Ⓜ Restricted Water Source
- Ⓜ Sheriff Repeater
- Ⓜ Completed Dozer Line
- Ⓜ Ridge/Geographic Feature
- Ⓜ Division Break
- Ⓜ Branch Break

- Ⓜ Completed Hand Line
- Ⓜ Road as Completed Line
- Ⓜ Proposed Burnout
- Ⓜ Active Burnout
- Ⓜ Planned Fire Line
- Ⓜ Aerial Retardant Drop
- Ⓜ Uncontrolled Fire Edge
- Ⓜ TFR
- Ⓜ Management Action Points
- Ⓜ Highways
- Ⓜ County Roads
- Ⓜ Forest Roads
- Ⓜ Other Roads
- Ⓜ Structures
- Ⓜ Primary Line
- Ⓜ Alternate Line
- Ⓜ Contingency Line
- Ⓜ Emergency Line
- Ⓜ Trails
- Ⓜ Evacuation Zones
- Ⓜ Wildfire Daily Fire Perimeter
- Ⓜ Fire History 1980-Present
- Ⓜ Streams
- Ⓜ Waterbodies
- Ⓜ State Boundary
- Ⓜ Wilderness
- Ⓜ Other Federal
- Ⓜ State
- Ⓜ US Forest Service

- 4-8 mph
- 8-12 mph
- 12-16 mph
- 16-20 mph
- 0-4 mph

