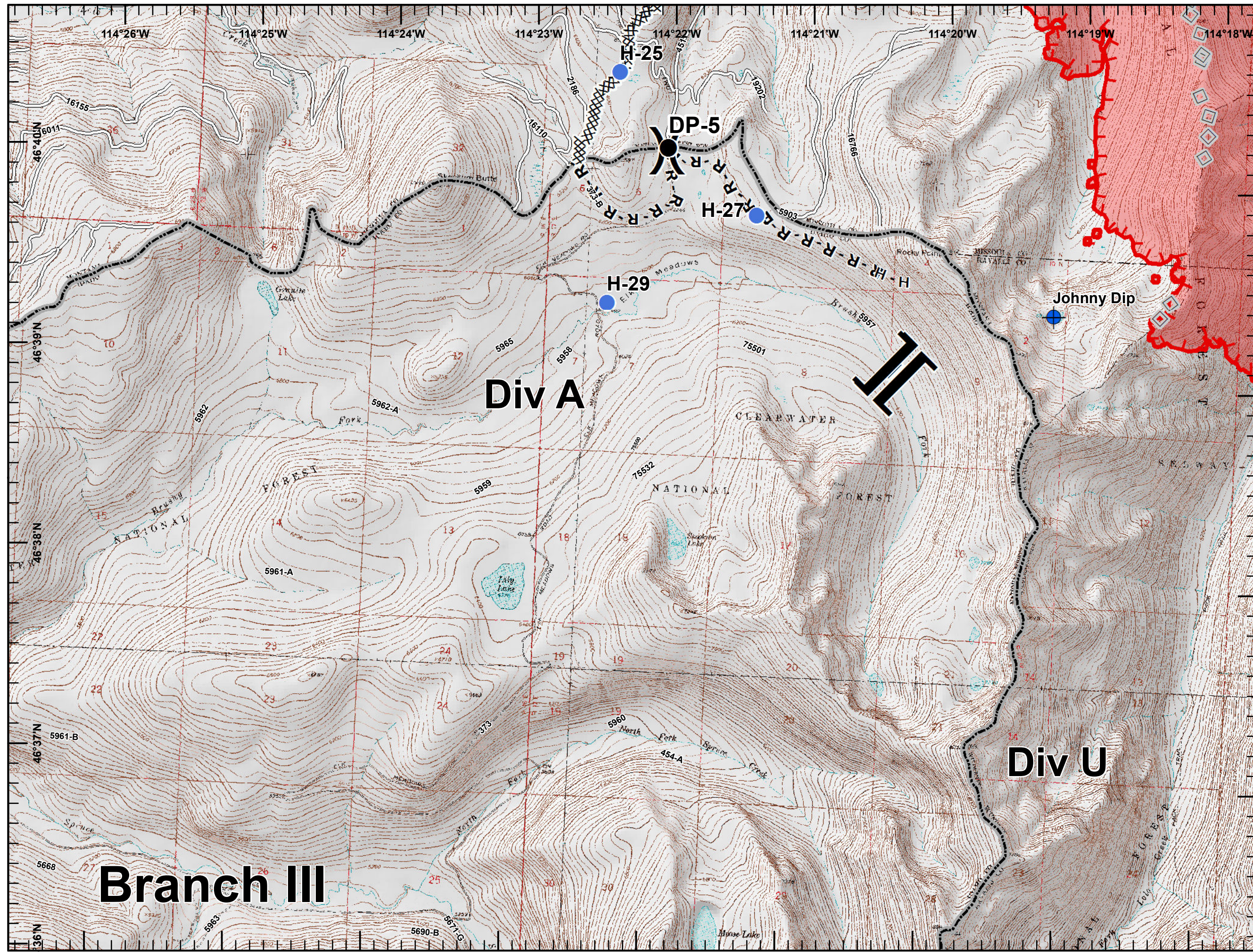
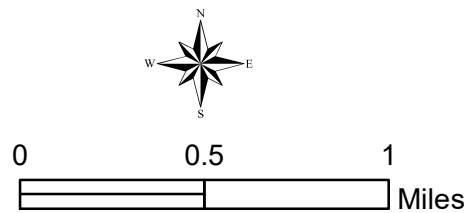


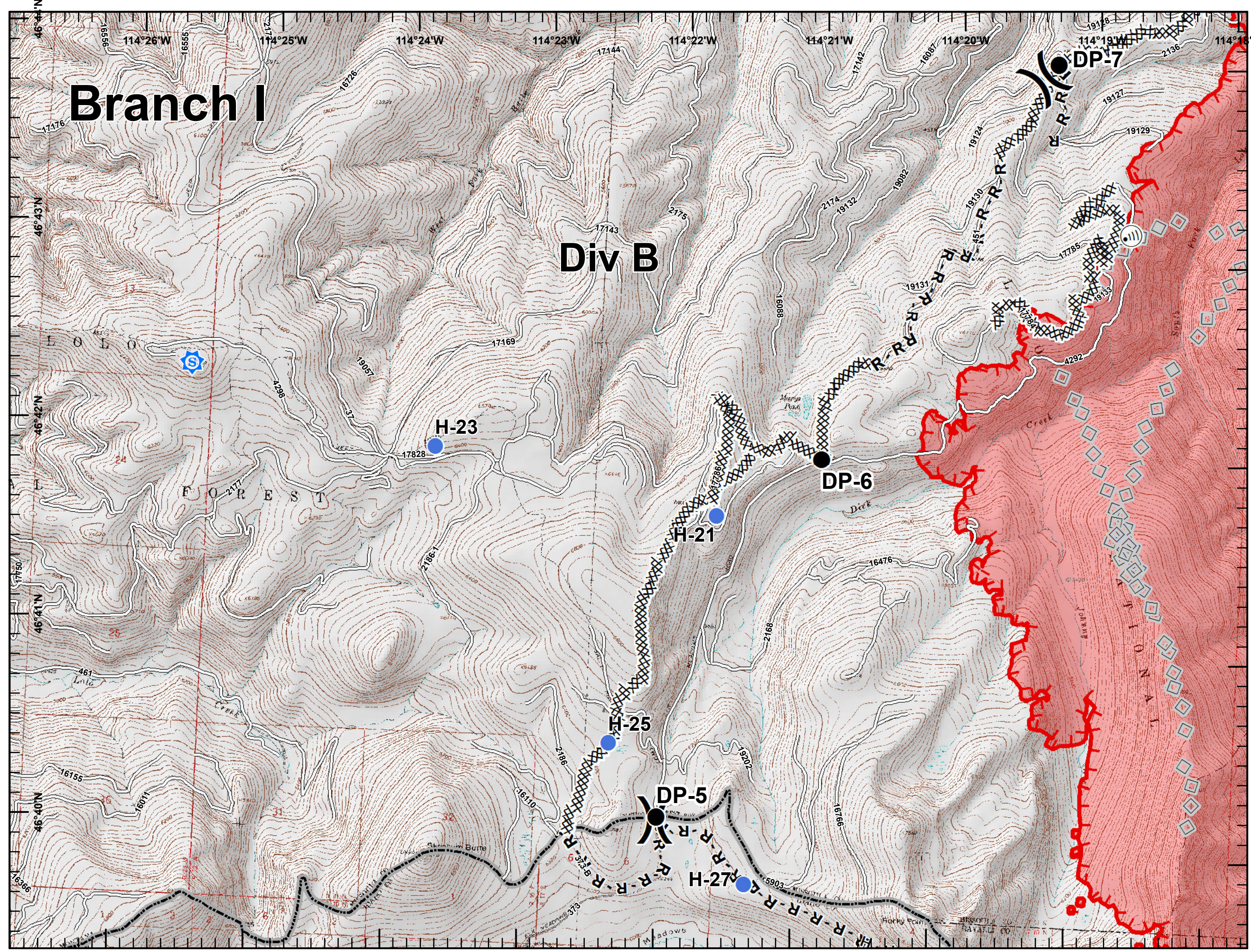
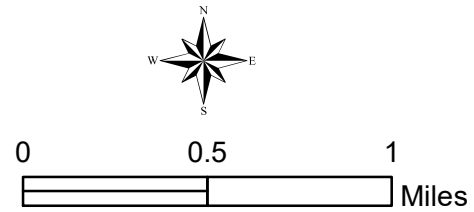


- Dip Site
- Drop Point
- Helispot
- Division Break
- Branch Break
- Completed Dozer Line
- H - H Completed Hand Line
- R - R Road as Completed Line
- Aerial Retardant Drop
- Roads
- State Boundary
- Uncontrolled Fire Edge
- Wildfire Daily Fire Perimeter



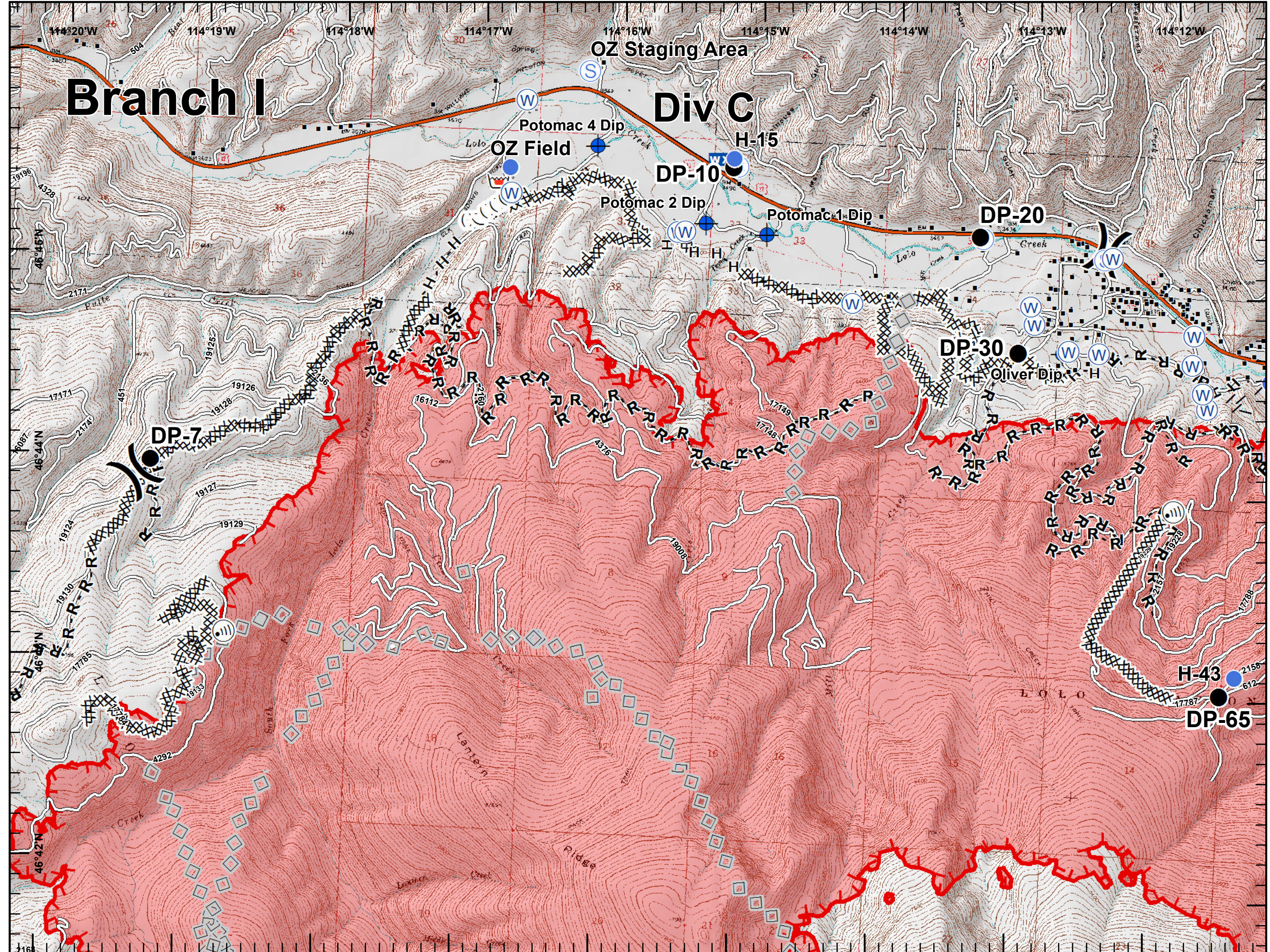
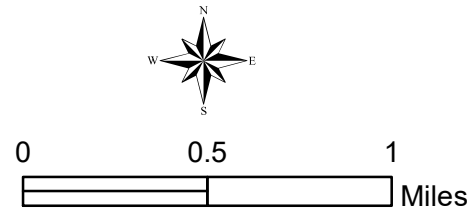


- Sheriff_Rptr
- Drop Point
- Helispot
- Internet Access
- Lookout
- Division Break
- Completed Dozer Line
- Completed Hand Line
- Road as Completed Line
- Aerial Retardant Drop
- Roads
- State Boundary
- Uncontrolled Fire Edge
- Wildfire Daily Fire Perimeter



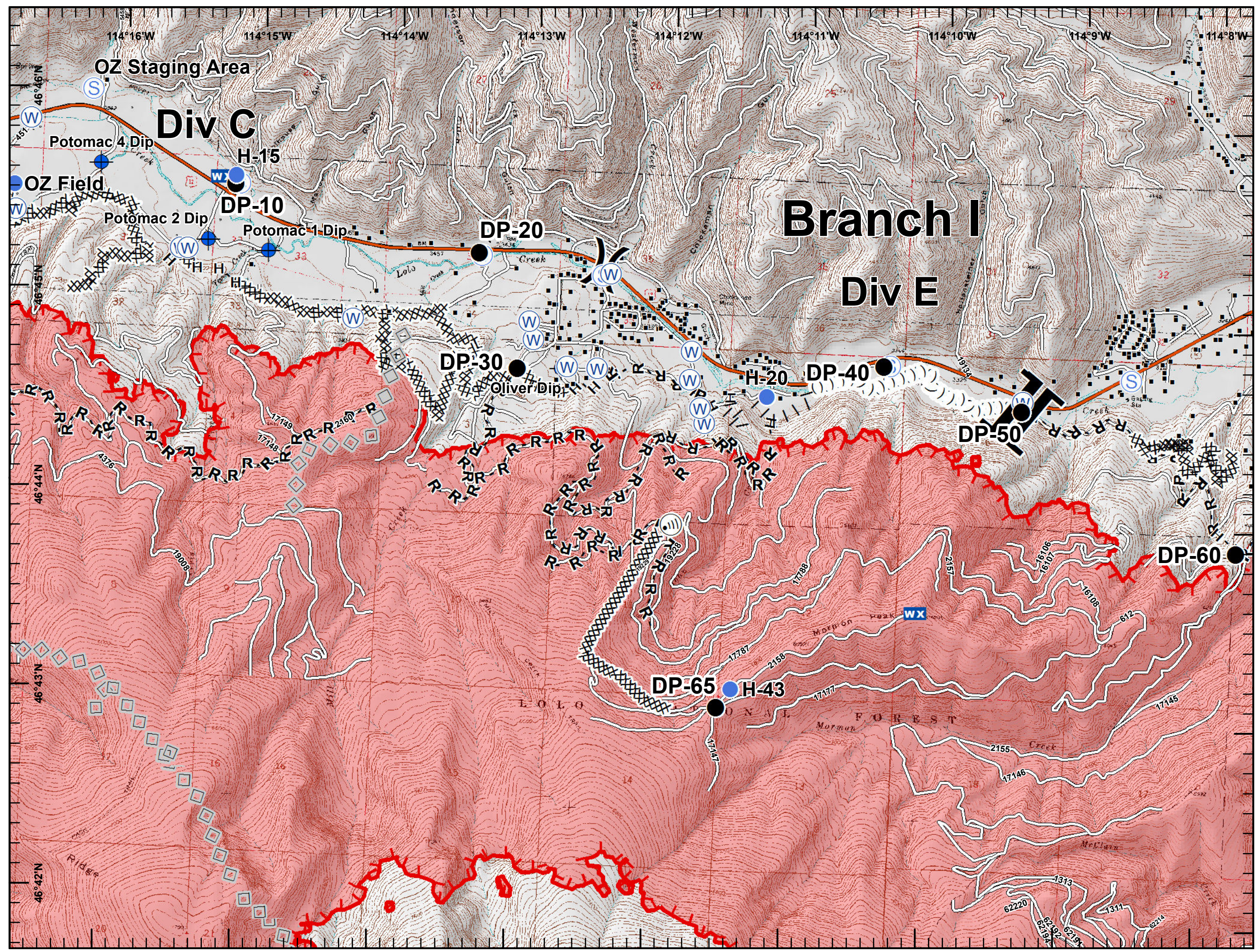
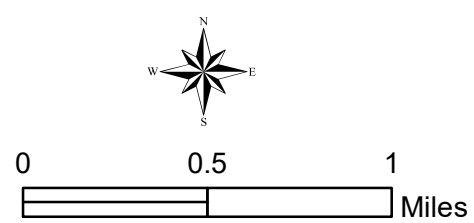


- Dip Site
- Drop Point
- Helispot
- W Internet Access
- WX Mobile Weather Unit
- ⌘ Retardant/Mud Pit
- S Staging Area
- W Water Source
-) Division Break
- Structures
- XXXXX Completed Dozer Line
- H-H Completed Hand Line
- R-R Road as Completed Line
- | | | Proposed Burnout
- ◇ Aerial Retardant Drop
- (()) Ridge/Geographic Feature
- Interstate and Highways
- Roads
- ▬ State Boundary
- ▬ Uncontrolled Fire Edge
- ▬ Wildfire Daily Fire Perimeter



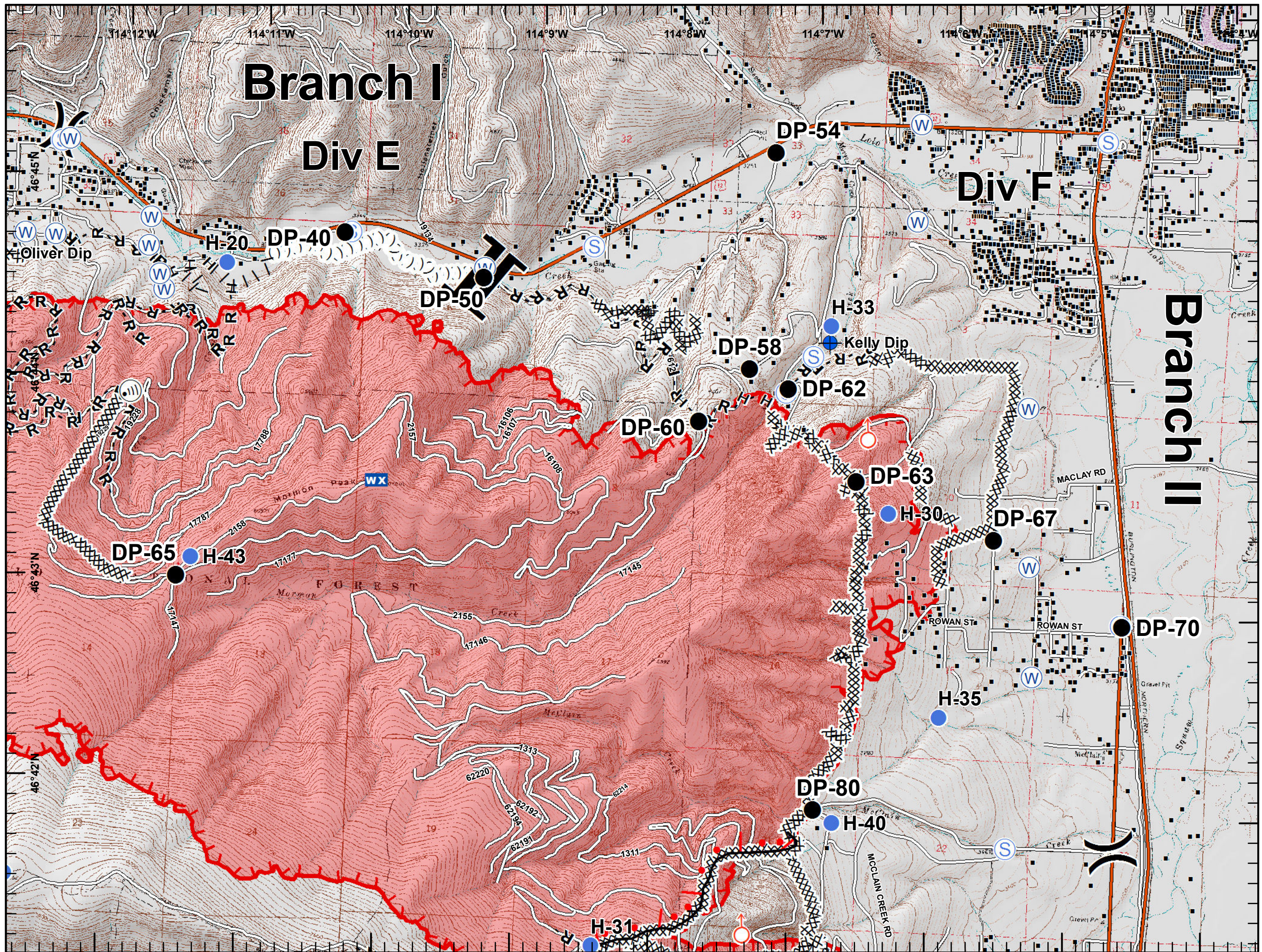
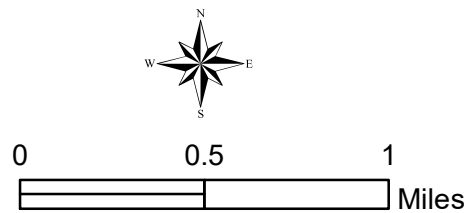


- ◆ Dip Site
- Drop Point
- Helispot
- I Internet Access
- WX Mobile Weather Unit
- W Water Source
- S Staging Area
- W Water Source
-) Division Break
- | Branch Break
- Structures
- Completed Dozer Line
- Completed Hand Line
- Road as Completed Line
- Proposed Burnout
- ◇ Aerial Retardant Drop
- () Ridge/Geographic Feature
- Interstate and Highways
- Roads
- State Boundary
- ▭ Uncontrolled Fire Edge
- Wildfire Daily Fire Perimeter



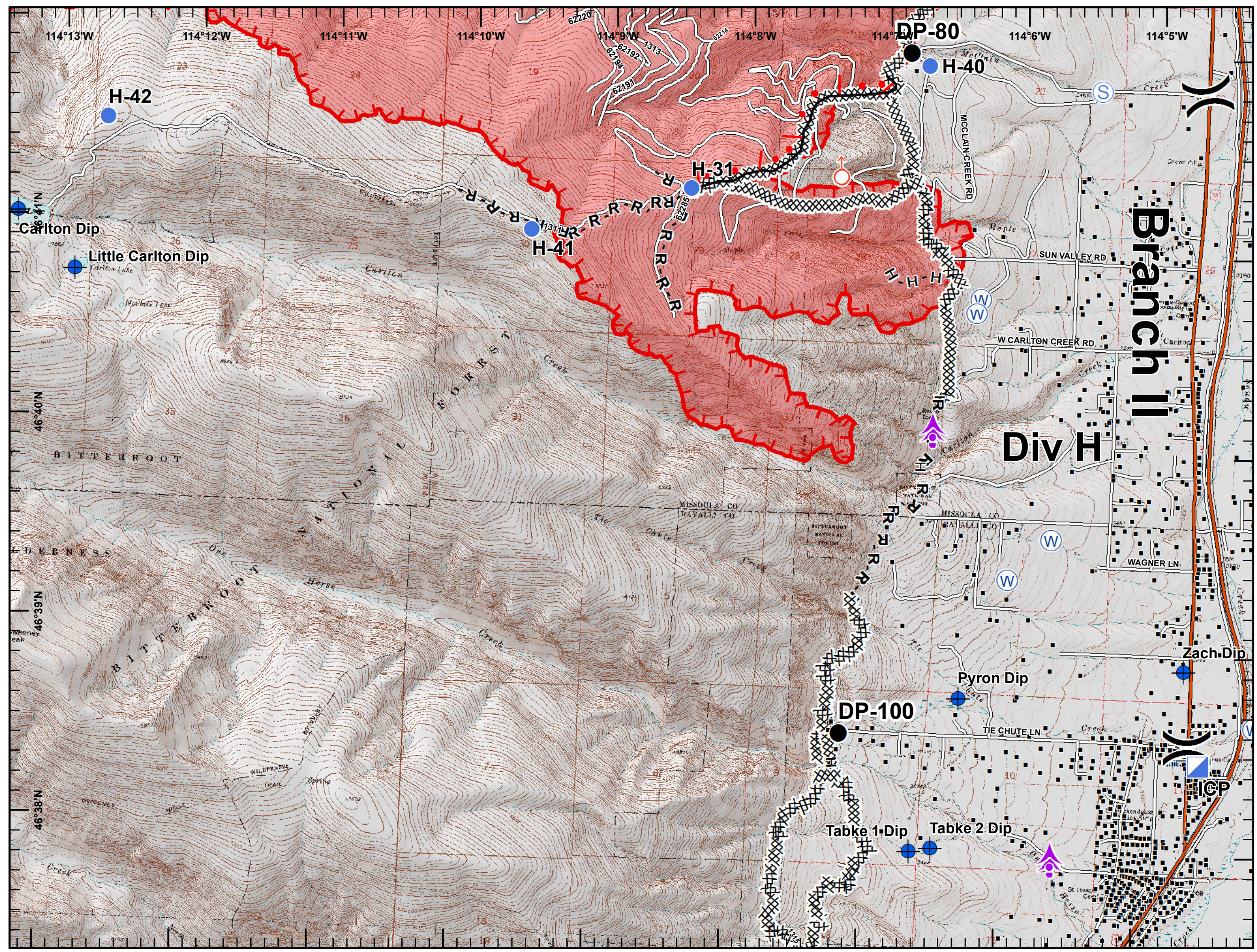
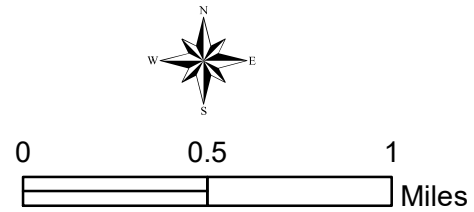


- Dip Site
- Drop Point
- Helispot
- I Internet Access
- WX Mobile Weather Unit
- Spot Fire
- S Staging Area
- W Water Source
-) Division Break
- | Branch Break
- Structures
- Completed Dozer Line
- H - H Completed Hand Line
- R - R Road as Completed Line
- Proposed Burnout
- Active Burnout
- Ridge/Geographic Feature
- Interstate and Highways
- Roads
- State Boundary
- Uncontrolled Fire Edge
- Wildfire Daily Fire Perimeter







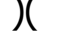


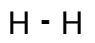
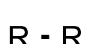

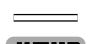





- Aerial Hazard
- Dip Site
- Drop Point
- Helispot
- ICP
- Spot Fire
- Staging Area
- Water Source
- Division Break
- Structures
- Completed Dozer Line
- Completed Hand Line
- Road as Completed Line
- Active Burnout
- Interstate and Highways
- Roads
- State Boundary
- Uncontrolled Fire Edge
- Wildfire Daily Fire Perimeter





-  Aerial Hazard
-  Dip Site
-  Drop Point
-  ICP
-  Retardant/Mud Pit
-  Water Source
-  Division Break
-  Structures
-  Completed Dozer Line
-  Completed Hand Line
-  Road as Completed Line
-  Interstate and Highways
-  Roads
-  State Boundary

