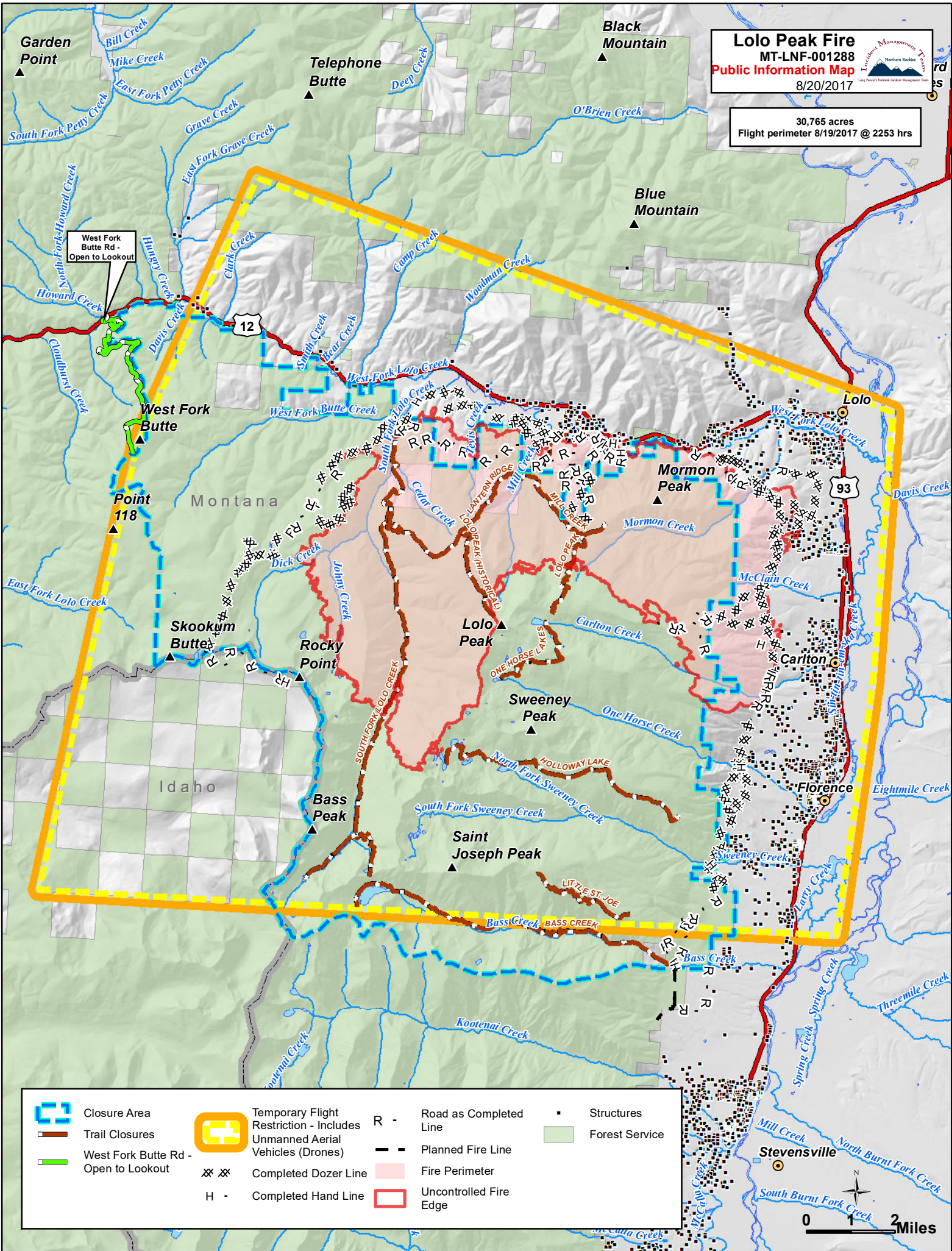


Lolo Peak Fire
 MT-LNF-001288
Public Information Map
 8/20/2017



30,765 acres
 Flight perimeter 8/19/2017 @ 2253 hrs



- | | | | | | | | |
|--|------------------------|--|---|-----|------------------------|---|----------------|
| | Closure Area | | Temporary Flight Restriction - Includes Unmanned Aerial Vehicles (Drones) | R - | Road as Completed Line | ▪ | Structures |
| | Trail Closures | | West Fork Butte Rd - Open to Lookout | | Planned Fire Line | | Forest Service |
| | Completed Dozer Line | | Completed Hand Line | | Fire Perimeter | | |
| | Uncontrolled Fire Edge | | | | | | |

