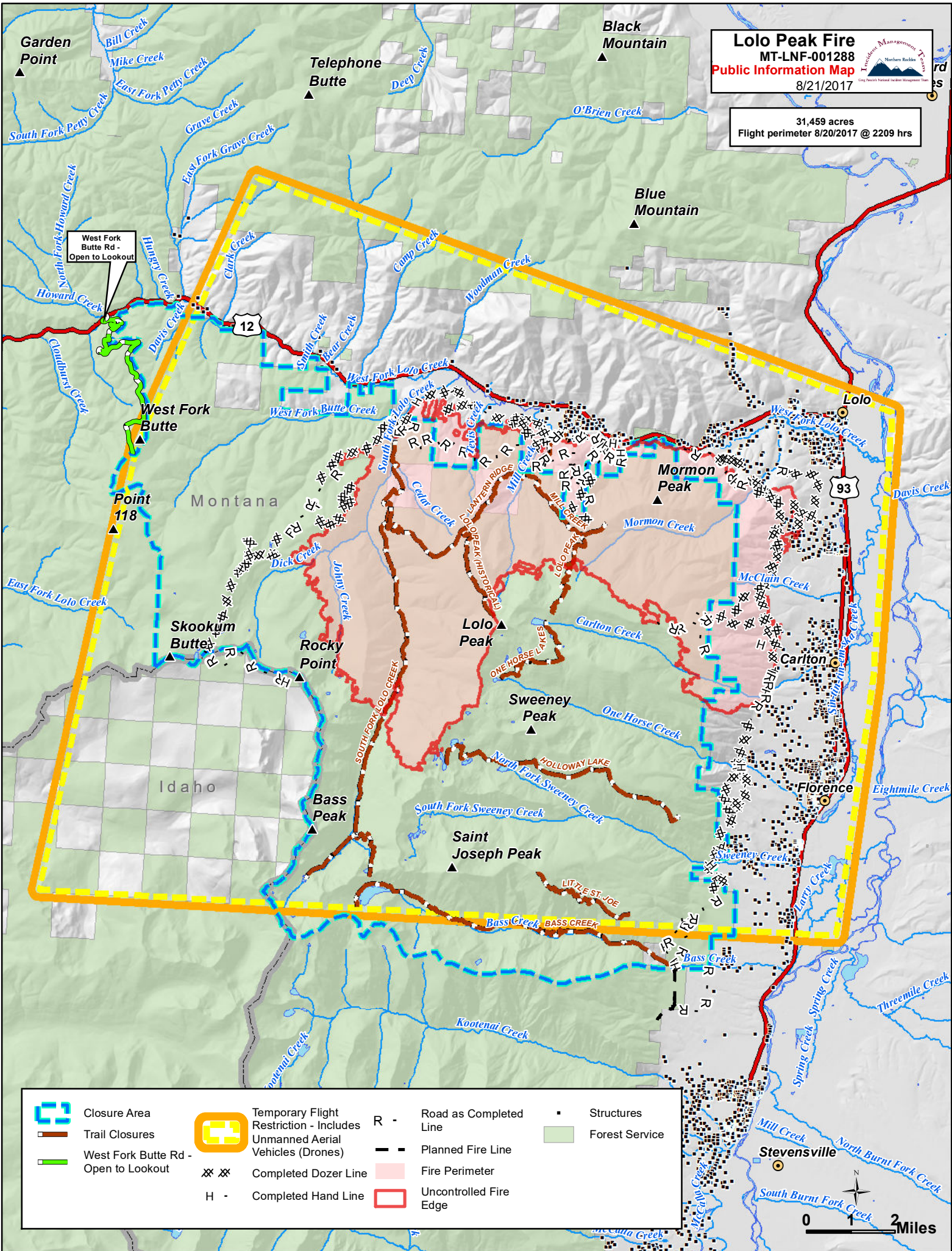


Lolo Peak Fire
 MT-LNF-001288
Public Information Map
 8/21/2017



31,459 acres
 Flight perimeter 8/20/2017 @ 2209 hrs



- | | | | | | | | |
|--|--------------------------------------|--|---|-----|------------------------|--|----------------|
| | Closure Area | | Temporary Flight Restriction - Includes Unmanned Aerial Vehicles (Drones) | R - | Road as Completed Line | | Structures |
| | Trail Closures | | Planned Fire Line | | Fire Perimeter | | Forest Service |
| | West Fork Butte Rd - Open to Lookout | | Completed Dozer Line | | Uncontrolled Fire Edge | | |
| | | | Completed Hand Line | | | | |

