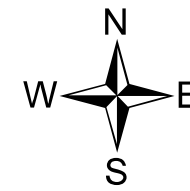


Lolo Peak Fire

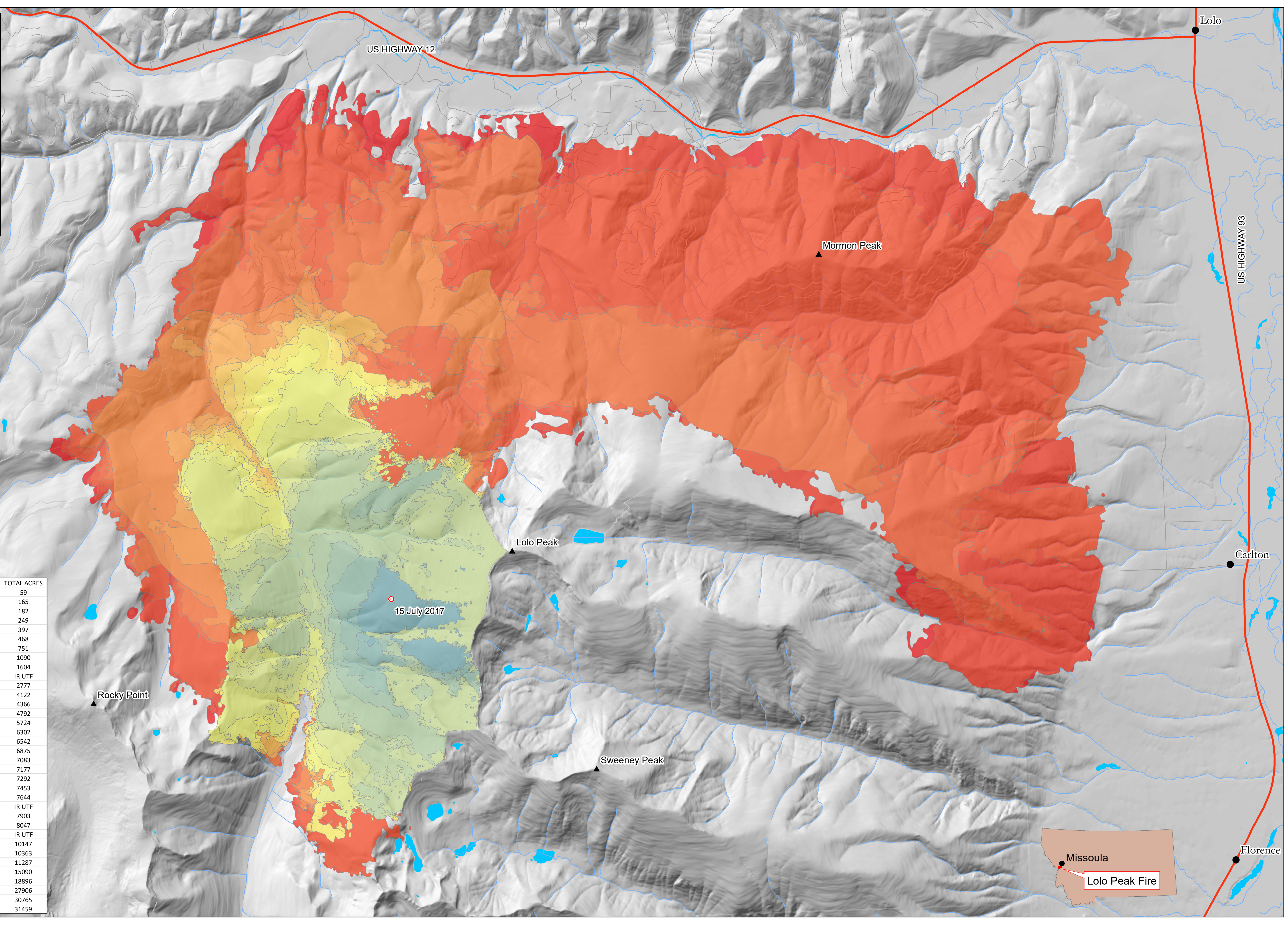
PROGRESSION MAP

MT-LNF-0001288
21 AUGUST 2017



0 0.225 0.45 0.9 Miles

SYMBOL	DATE	GROWTH ACRES	TOTAL ACRES
	7/17/2017	59	59
	7/18/2017	106	165
	7/19/2017	17	182
	7/20/2017	67	249
	7/21/2017	148	397
	7/22/2017	71	468
	7/23/2017	283	751
	7/24/2017	339	1090
	7/25/2017	514	1604
	7/26/2017	IR UTF	IR UTF
	7/27/2017	1173	2777
	7/28/2017	1345	4122
	7/29/2017	244	4366
	7/30/2017	426	4792
	7/31/2017	932	5724
	8/1/2017	578	6302
	8/2/2017	240	6542
	8/3/2017	333	6875
	8/4/2017	208	7083
	8/5/2017	94	7177
	8/6/2017	115	7292
	8/7/2017	161	7453
	8/8/2017	191	7644
	8/9/2017	IR UTF	IR UTF
	8/10/2017	259	7903
	8/11/2017	144	8047
	8/12/2017	IR UTF	IR UTF
	8/13/2017	2100	10147
	8/14/2017	216	10363
	8/15/2017	924	11287
	8/16/2017	3803	15090
	8/17/2017	3806	18896
	8/18/2017	9010	27906
	8/19/2017	2859	30765
	8/20/2017	694	31459



15 July 2017

Rocky Point

Lolo Peak

Sweeney Peak

Mormon Peak

Carlton

Missoula

Lolo Peak Fire

Florence

US HIGHWAY 12

US HIGHWAY 93

Lolo