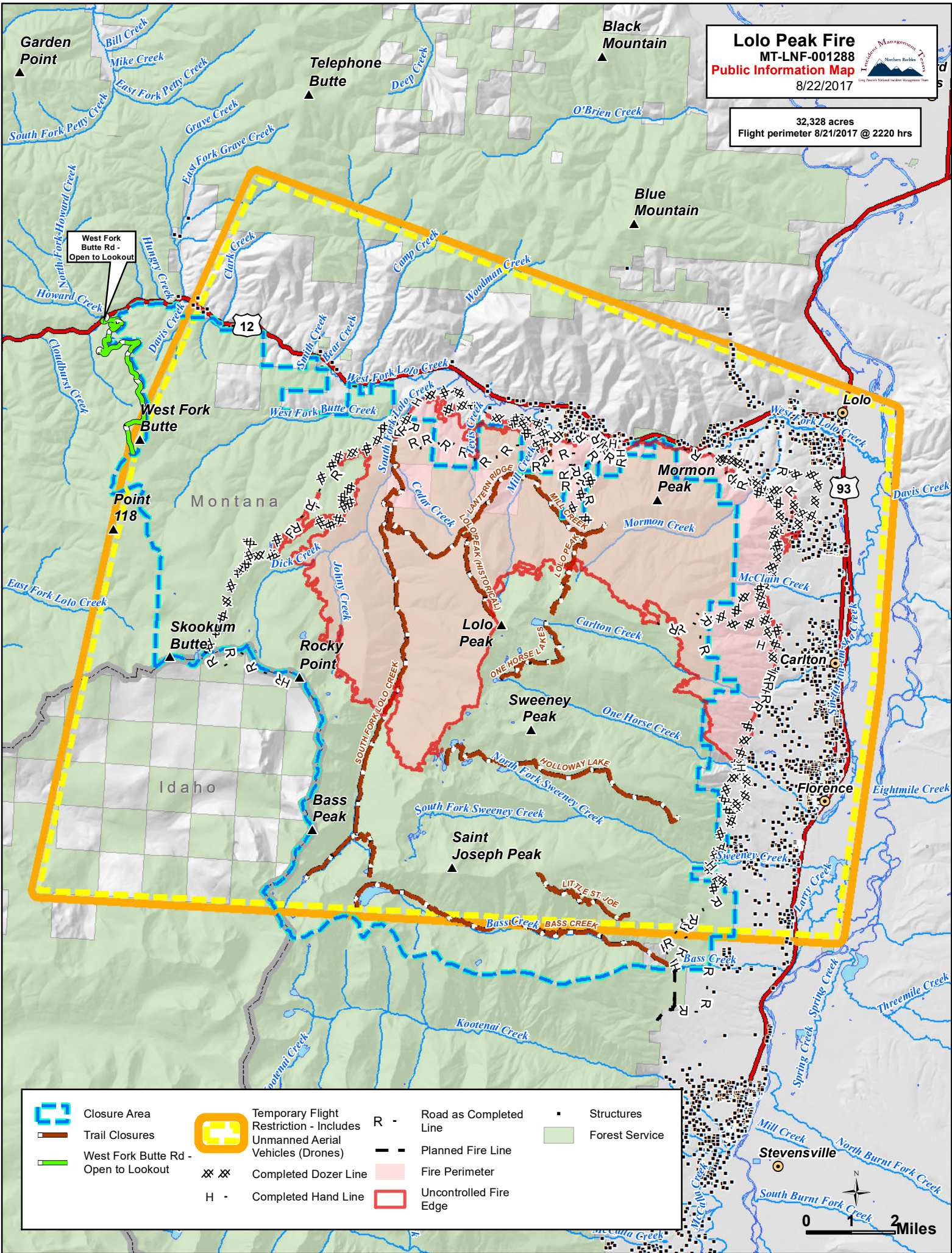


Lolo Peak Fire
 MT-LNF-001288
Public Information Map
 8/22/2017



32,328 acres
 Flight perimeter 8/21/2017 @ 2220 hrs



	Closure Area		Temporary Flight Restriction - Includes Unmanned Aerial Vehicles (Drones)	R -	Road as Completed Line	▪	Structures
	Trail Closures		Completed Dozer Line	---	Planned Fire Line		Forest Service
	West Fork Butte Rd - Open to Lookout	H -	Completed Hand Line		Fire Perimeter		Uncontrolled Fire Edge

