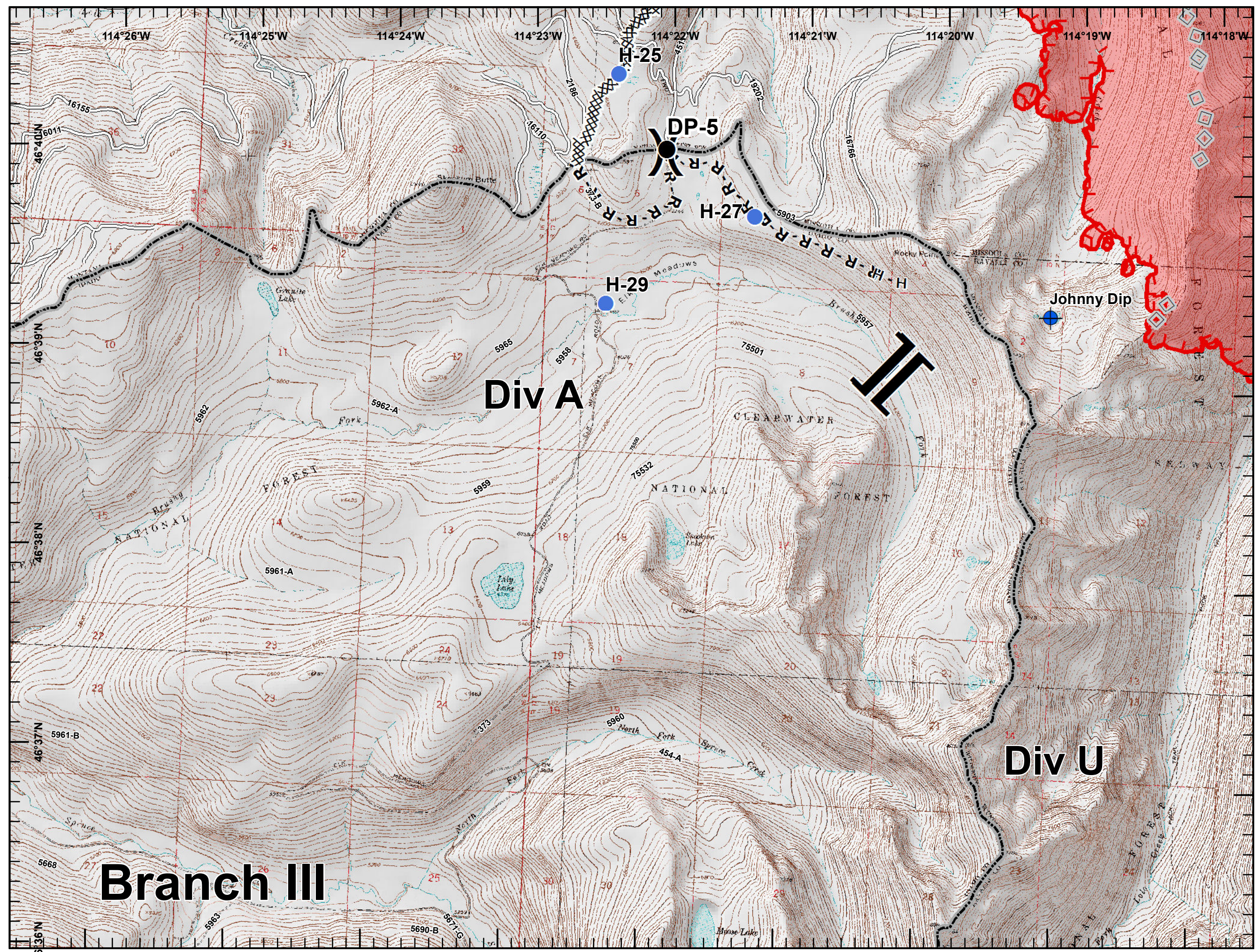
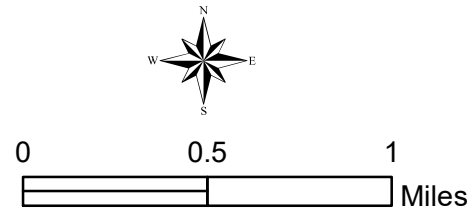



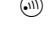

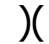

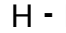








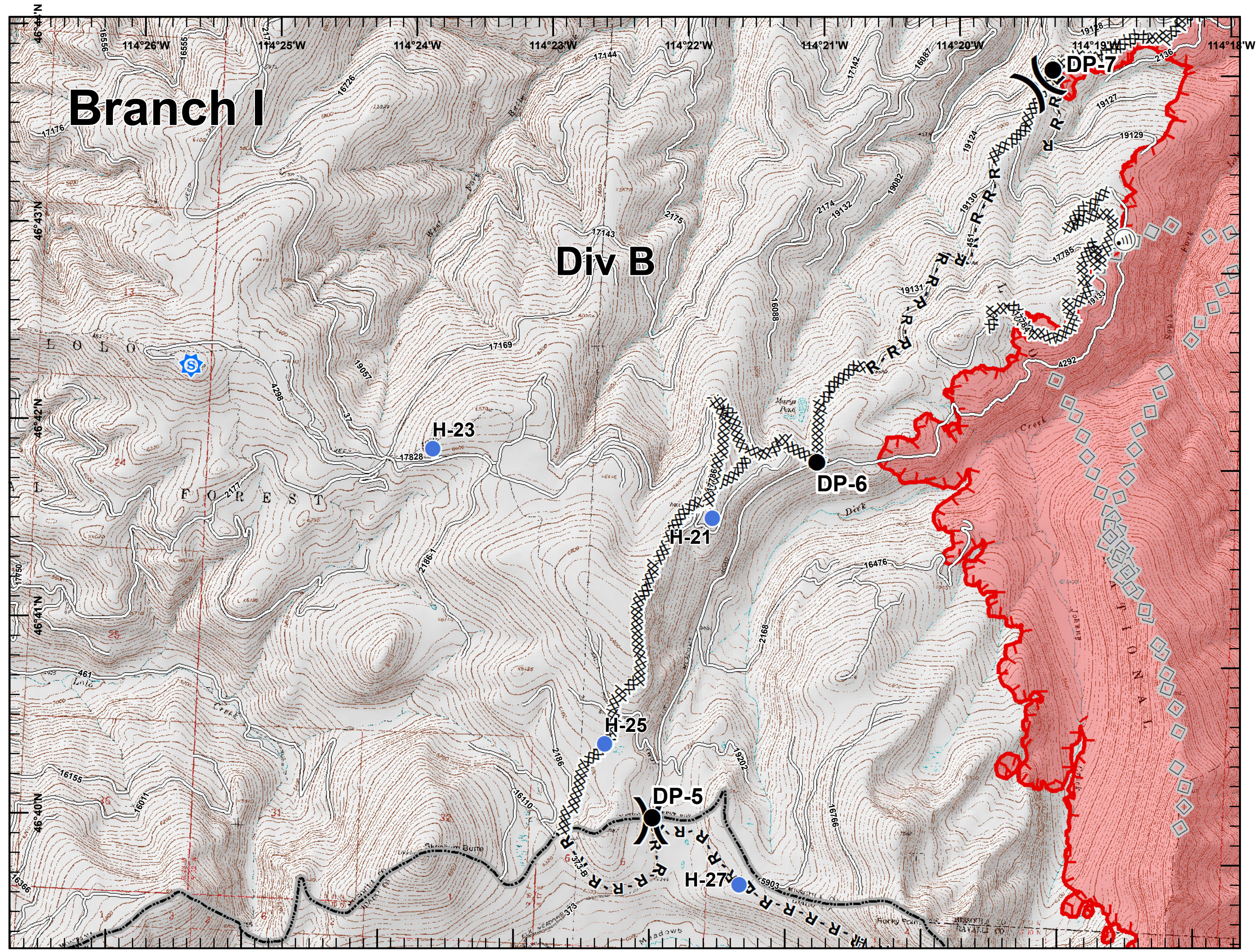
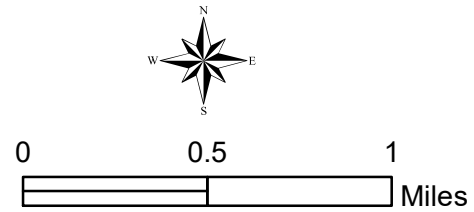


- Dip Site
- Drop Point
- Helispot
- Division Break
- Branch Break
- Completed Dozer Line
- Completed Hand Line
- Road as Completed Line
- Aerial Retardant Drop
- Uncontrolled Fire Edge
- Roads
- State Boundary
- Wildfire Daily Fire Perimeter



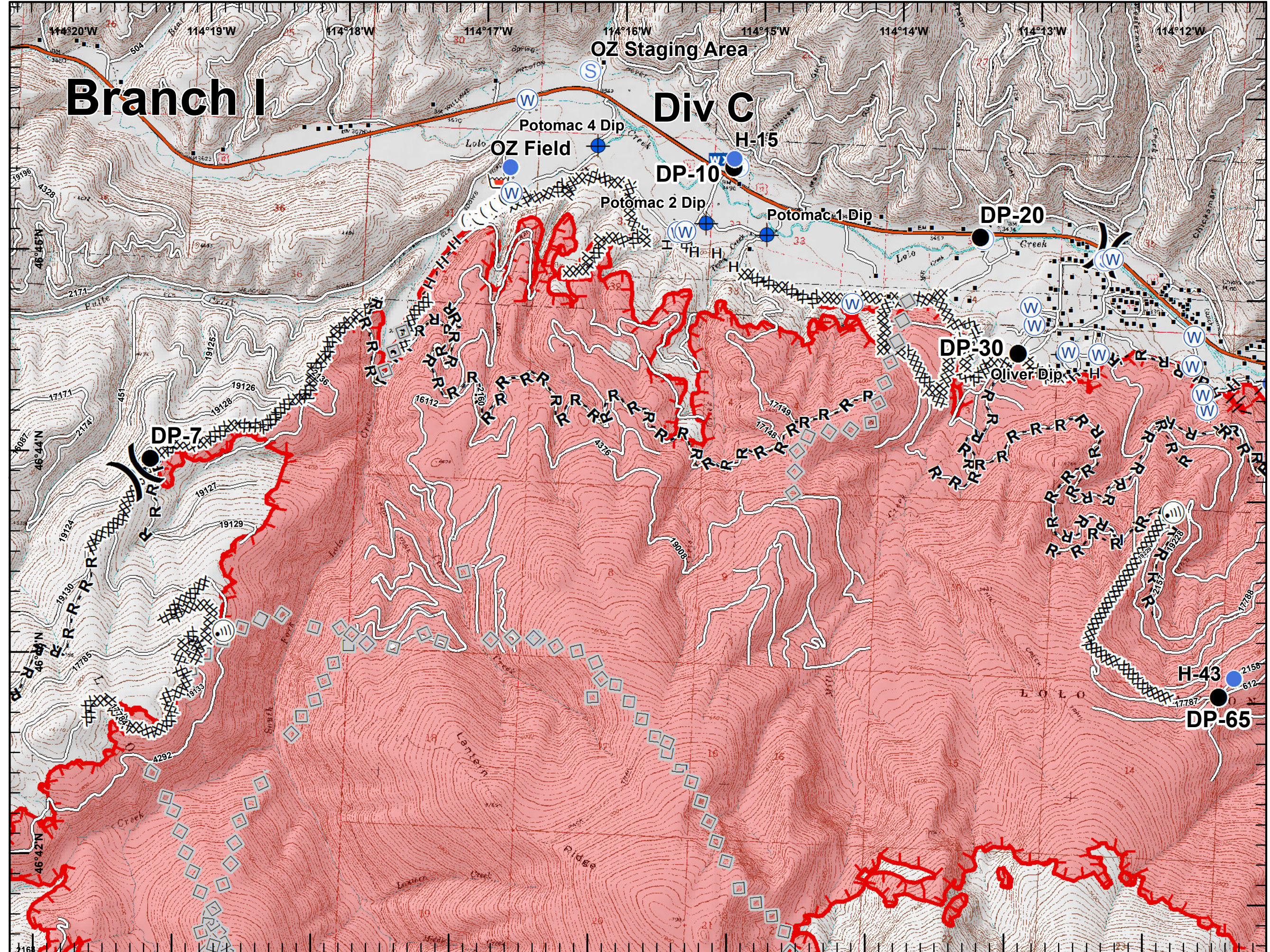
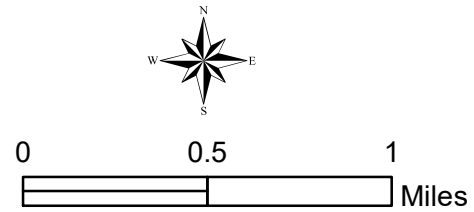


-  Sheriff_Rptr
-  Drop Point
-  Helispot
-  Internet Access
-  Lookout
-  Division Break
-  Completed Dozer Line
-  Completed Hand Line
-  Road as Completed Line
-  Aerial Retardant Drop
-  Uncontrolled Fire Edge
-  Roads
-  State Boundary
-  Wildfire Daily Fire Perimeter





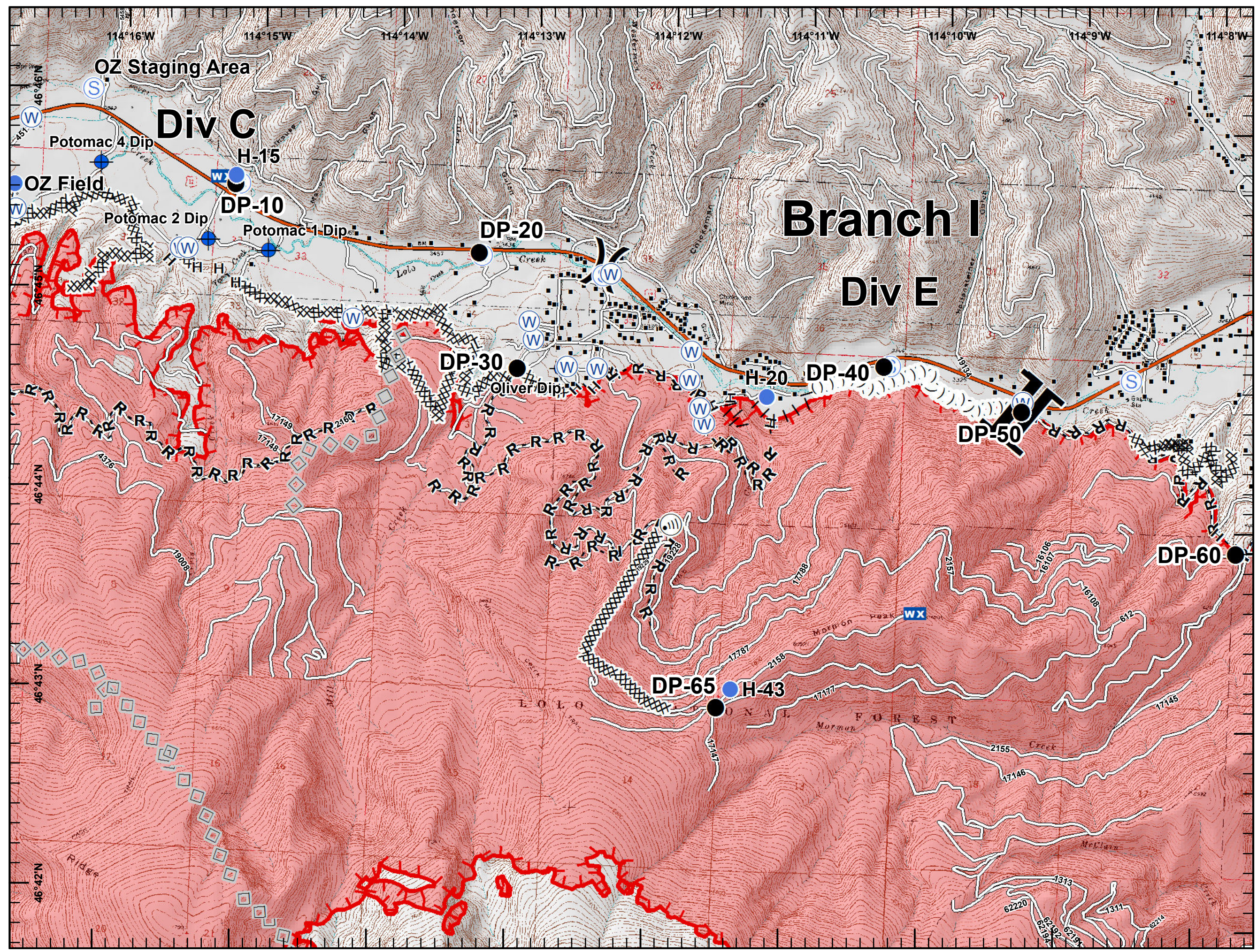
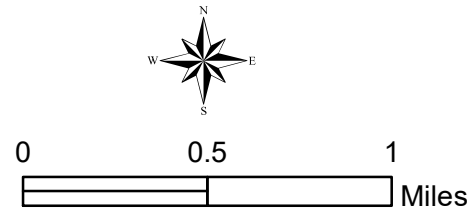
- Dip Site
- Drop Point
- Helispot
- W Internet Access
- WX Mobile Weather Unit
- W Retardant/Mud Pit
- S Staging Area
- W Water Source
-) Division Break
- Structures
- Completed Dozer Line
- Completed Hand Line
- Road as Completed Line
- Proposed Burnout
- ◇ Aerial Retardant Drop
- () Ridge/Geographic Feature
- Uncontrolled Fire Edge
- Interstate and Highways
- Roads
- State Boundary
- Wildfire Daily Fire Perimeter



Lolo Peak Fire
 MT-LNF-001288
 IAP Map, Day Shift
 Page 4, Div E
 8/22/2017

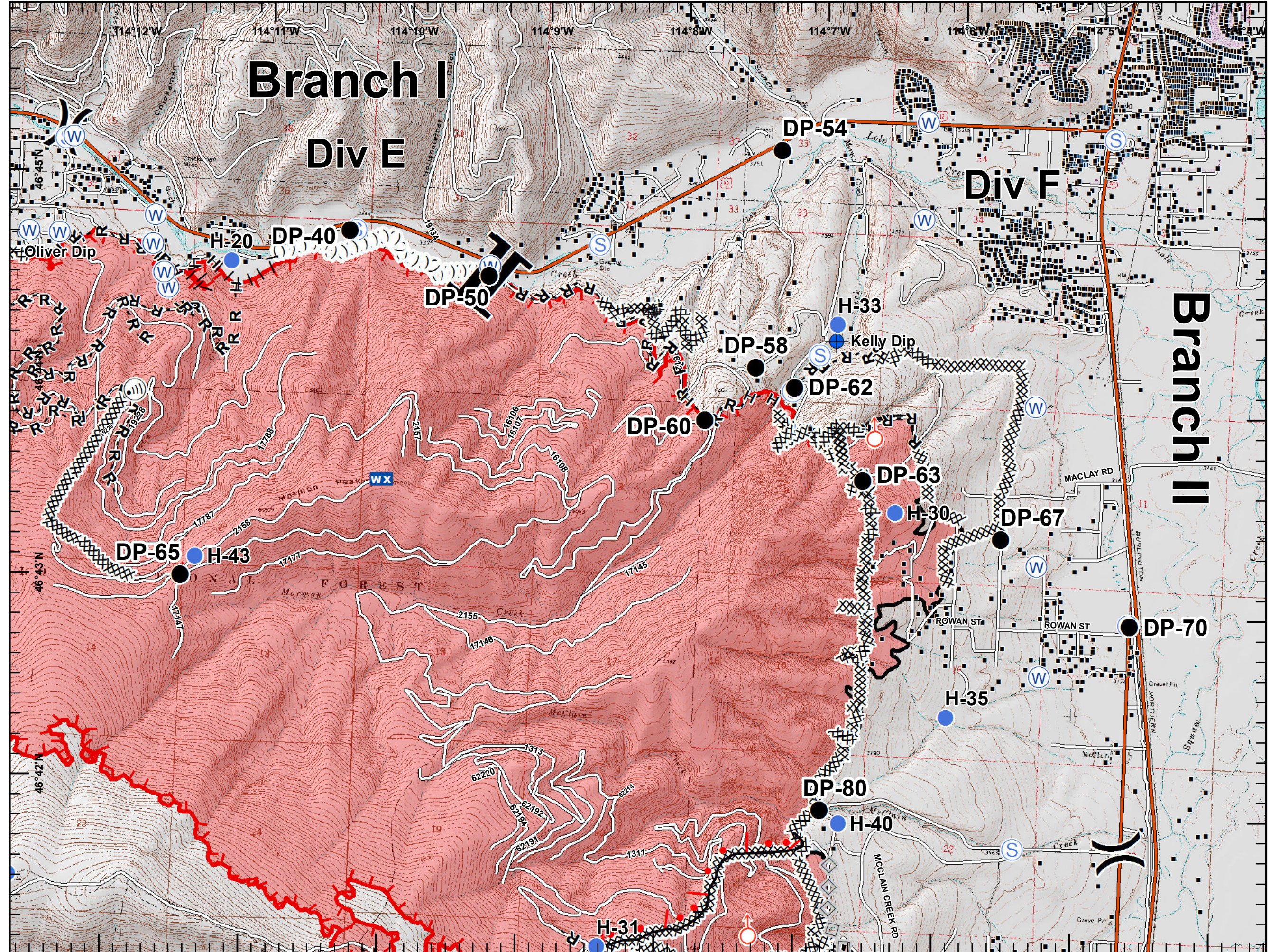
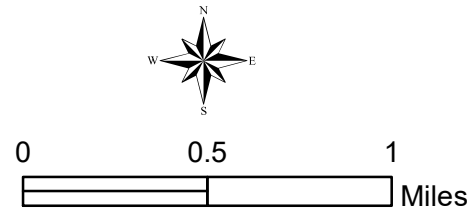


- ◆ Dip Site
- Drop Point
- Helispot
- I Internet Access
- WX Mobile Weather Unit
- W Water Source
- S Staging Area
- W Water Source
-) Division Break
- | Branch Break
- Structures
- Completed Dozer Line
- Completed Hand Line
- Road as Completed Line
- Proposed Burnout
- ◇ Aerial Retardant Drop
- () Ridge/Geographic Feature
- Uncontrolled Fire Edge
- Interstate and Highways
- Roads
- State Boundary
- Wildfire Daily Fire Perimeter



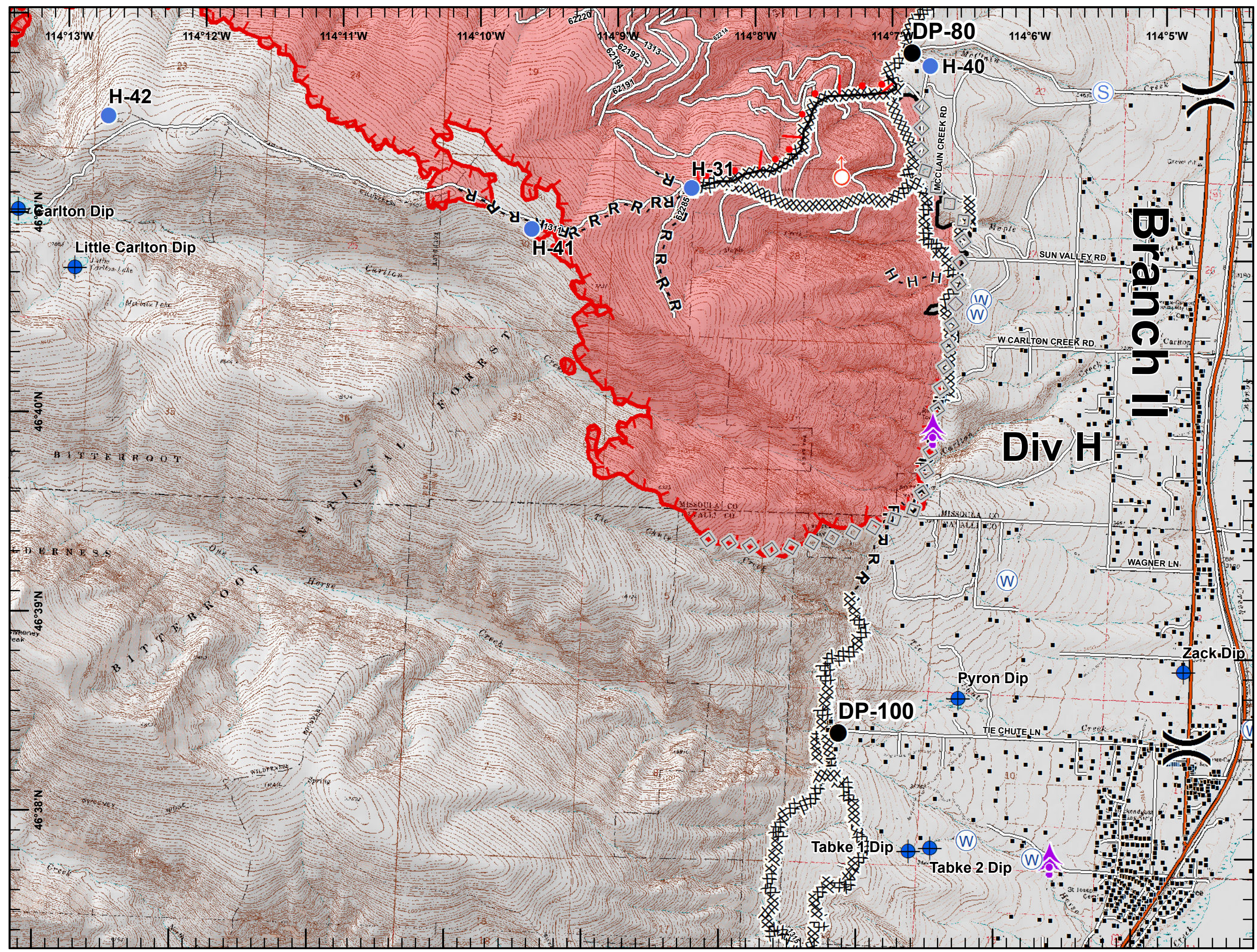
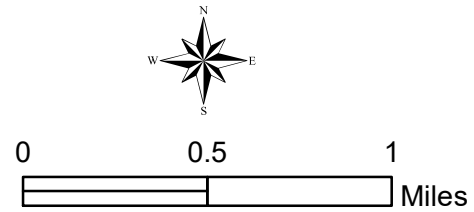


- Helispot
- Internet Access
- Mobile Weather Unit
- Spot Fire
- Staging Area
- Water Source
- Division Break
- Branch Break
- Structures
- Completed Dozer Line
- Completed Hand Line
- Road as Completed Line
- Proposed Burnout
- Active Burnout
- Aerial Retardant Drop
- Ridge/Geographic Feature
- Uncontrolled Fire Edge
- Completed Line
- Interstate and Highways
- Roads
- State Boundary
- Wildfire Daily Fire Perimeter









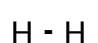

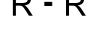






- Aerial Hazard
- Dip Site
- Drop Point
- Helispot
- Spot Fire
- Staging Area
- Water Source
- Division Break
- Structures
- Completed Dozer Line
- Completed Hand Line
- Road as Completed Line
- Active Burnout
- Aerial Retardant Drop
- Uncontrolled Fire Edge
- Completed Line
- Interstate and Highways
- Roads
- State Boundary
- Wildfire Daily Fire Perimeter





-  Aerial Hazard
-  Dip Site
-  Drop Point
-  Retardant/Mud Pit
-  Water Source
-  Division Break
-  Structures
-  Completed Dozer Line
-  Completed Hand Line
-  Road as Completed Line
-  Interstate and Highways
-  Roads
-  State Boundary

