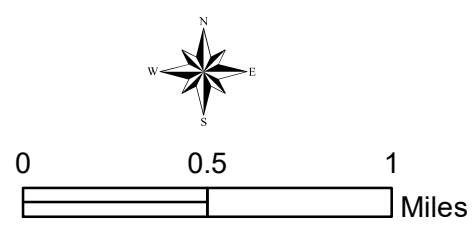


- Dip Site
- Drop Point
- Helispot
- Division Break
- Branch Break
- Completed Dozer Line
- Completed Hand Line
- Road as Completed Line
- Aerial Retardant Drop
- Uncontrolled Fire Edge
- Roads
- State Boundary
- Wildfire Daily Fire Perimeter

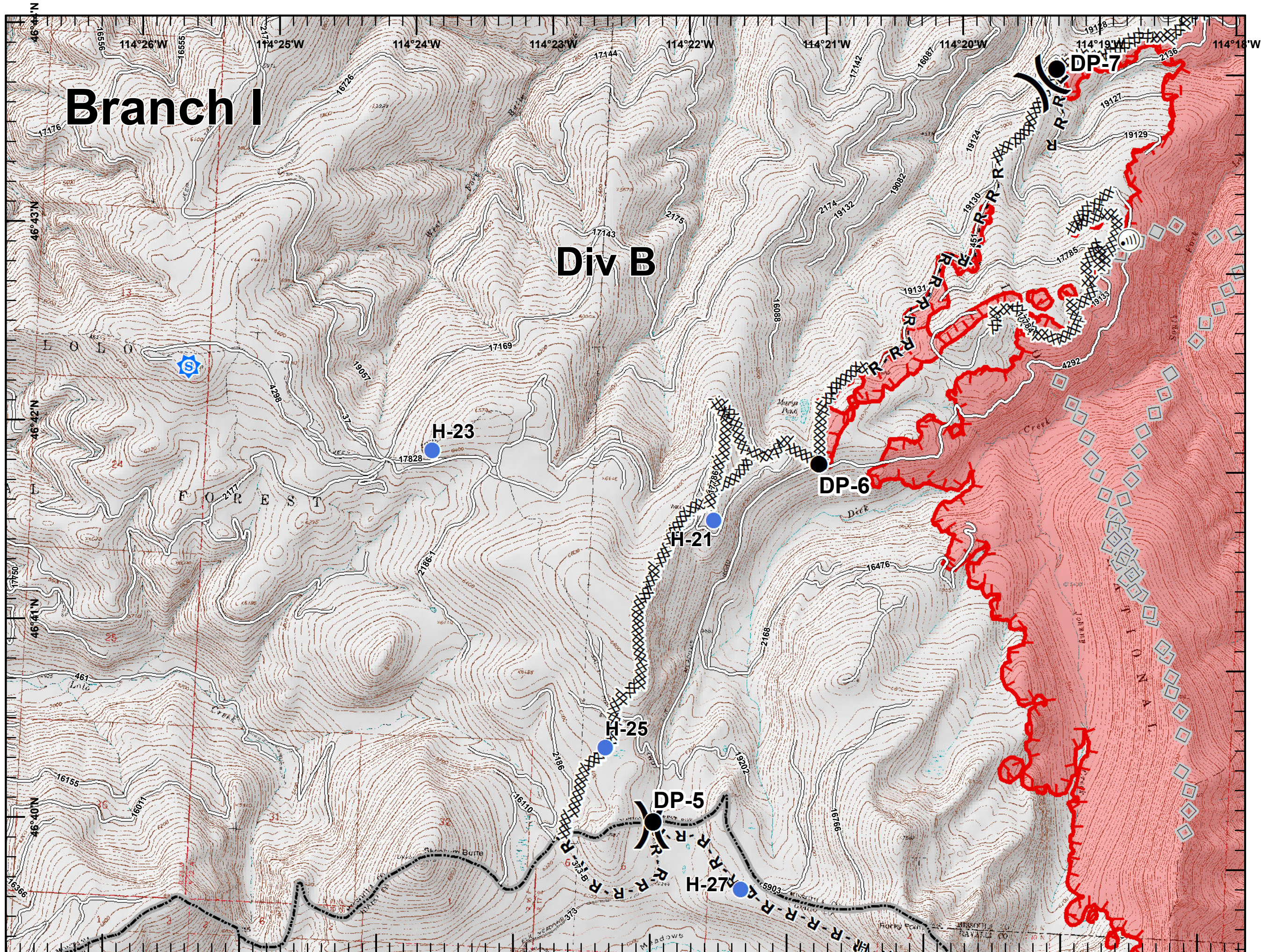
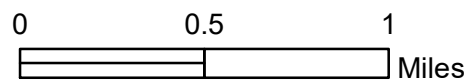
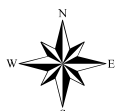


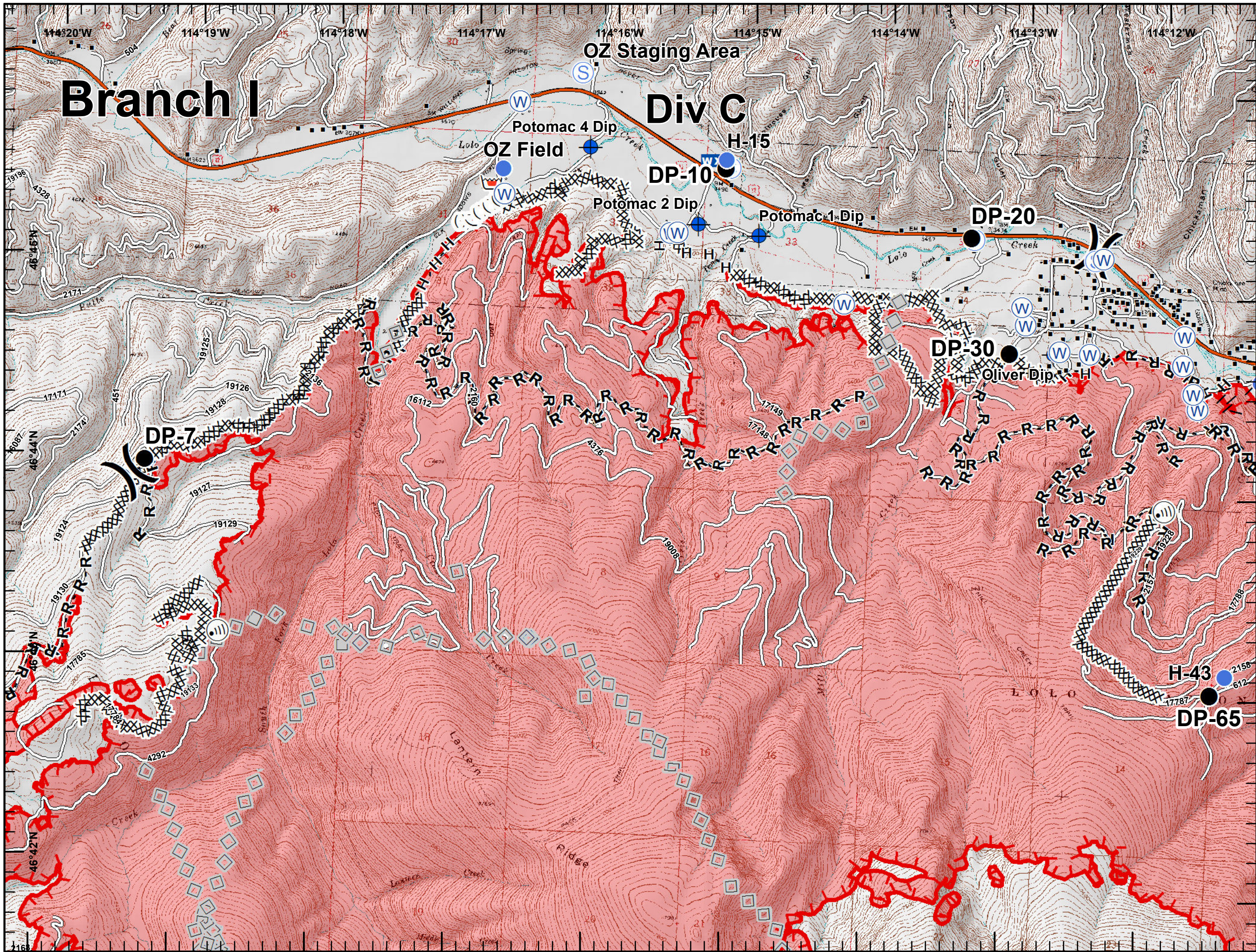


Branch I

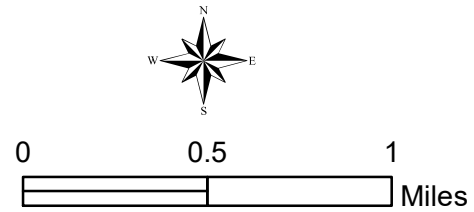
Div B

- Sheriff_Rptr
- Drop Point
- Helispot
- Internet Access
- Lookout
- Division Break
- Completed Dozer Line
- Completed Hand Line
- Road as Completed Line
- Aerial Retardant Drop
- Uncontrolled Fire Edge
- Roads
- State Boundary
- Wildfire Daily Fire Perimeter



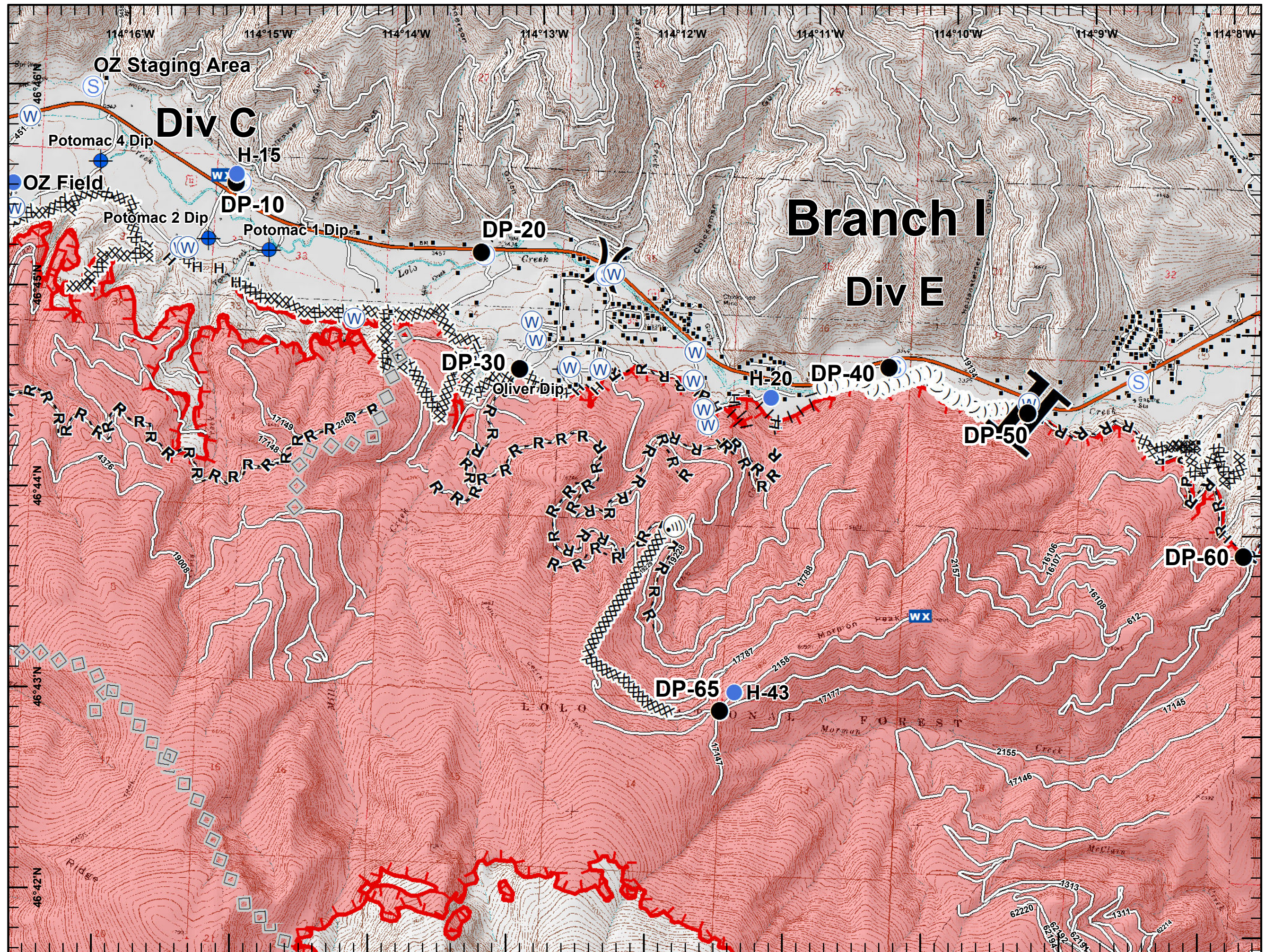
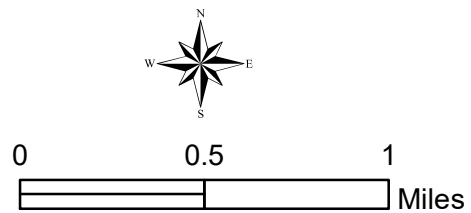


- ◆ Dip Site
- Drop Point
- Helispot
- Ⓜ Internet Access
- WX Mobile Weather Unit
- 🛡 Retardant/Mud Pit
- Ⓢ Staging Area
- Ⓜ Water Source
- ⌋ Division Break
- Structures
- XXXXXX Completed Dozer Line
- H - H Completed Hand Line
- R - R Road as Completed Line
- ||| Proposed Burnout
- ◇ Aerial Retardant Drop
- (()) Ridge/Geographic Feature
- 🔥 Uncontrolled Fire Edge
- 🛣 Interstate and Highways
- 🛤 Roads
- 🗺 State Boundary
- 🔴 Wildfire Daily Fire Perimeter



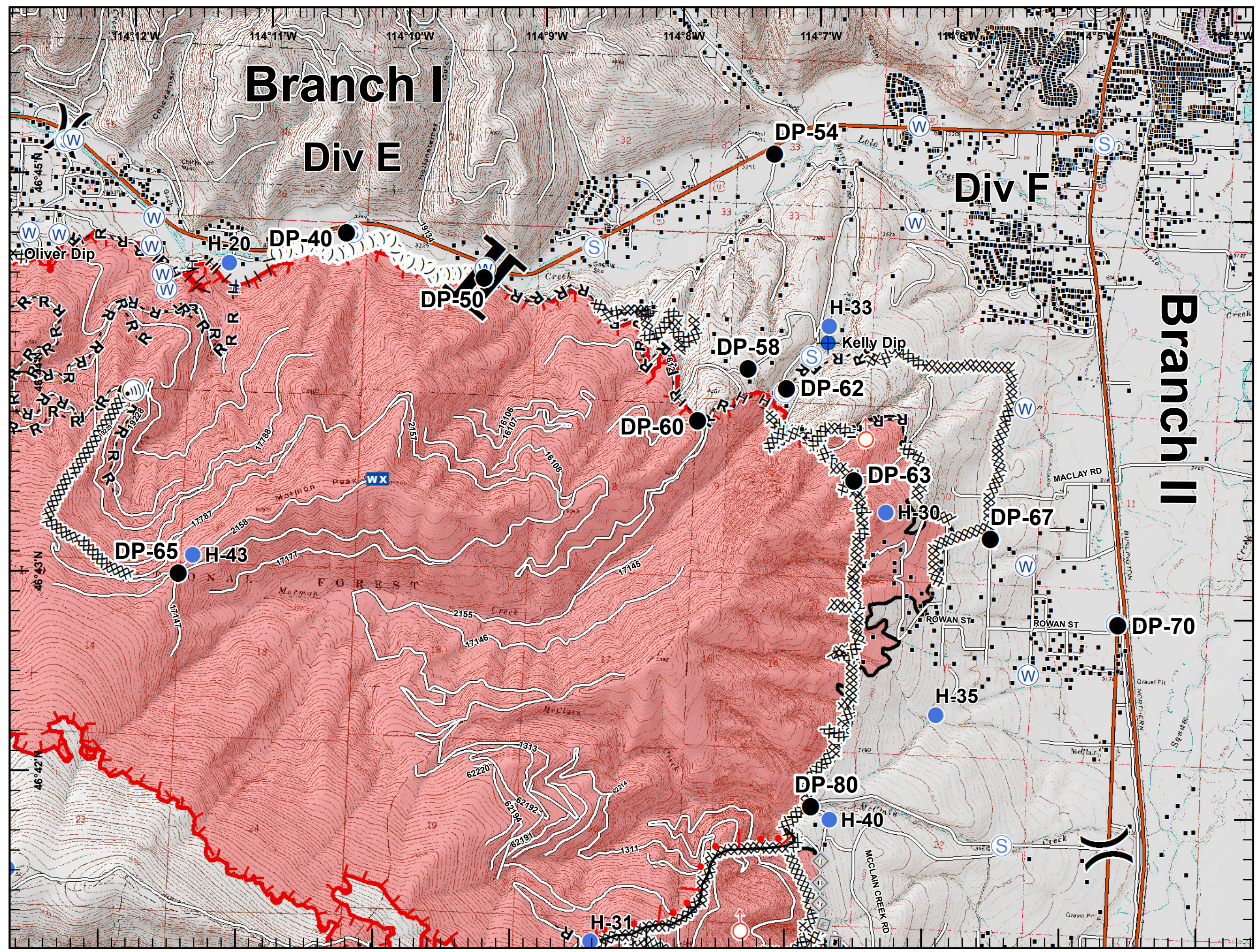
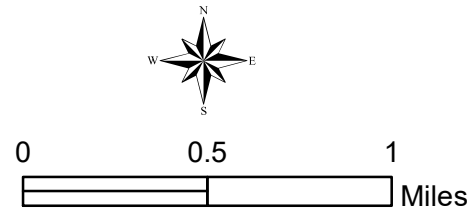


- Dip Site
- Drop Point
- Helispot
- Internet Access
- Mobile Weather Unit
- Retardant/Mud Pit
- Staging Area
- Water Source
- Division Break
- Branch Break
- Structures
- Completed Dozer Line
- Completed Hand Line
- Road as Completed Line
- Proposed Burnout
- Aerial Retardant Drop
- Ridge/Geographic Feature
- Uncontrolled Fire Edge
- Interstate and Highways
- Roads
- State Boundary
- Wildfire Daily Fire Perimeter












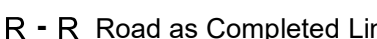





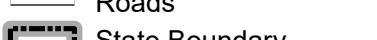




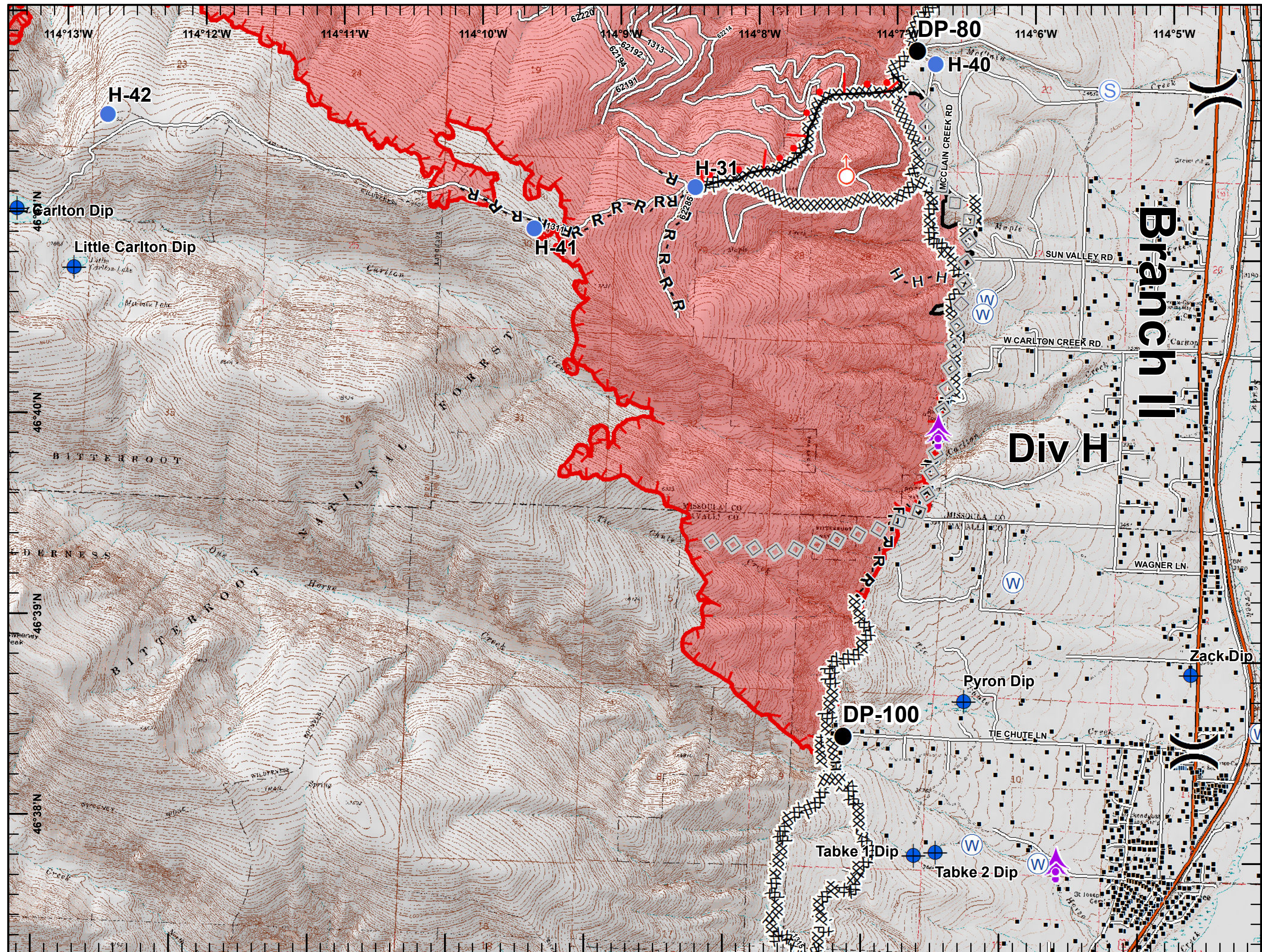
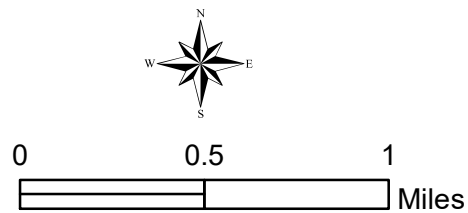


- Dip Site
- Drop Point
- Helispot
- Internet Access
- Mobile Weather Unit
- Spot Fire
- Staging Area
- Water Source
- Division Break
- Branch Break
- Structures
- Completed Dozer Line
- Completed Hand Line
- Road as Completed Line
- Proposed Burnout
- Active Burnout
- Aerial Retardant Drop
- Ridge/Geographic Feature
- Uncontrolled Fire Edge
- Completed Line
- Interstate and Highways
- Roads
- State Boundary
- Wildfire Daily Fire Perimeter









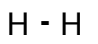
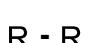









-  Aerial Hazard
-  Dip Site
-  Drop Point
-  Helispot
-  Spot Fire
-  Staging Area
-  Water Source
-  Division Break
-  Structures
-  Completed Dozer Line
-  Completed Hand Line
-  Road as Completed Line
-  Active Burnout
-  Aerial Retardant Drop
-  Uncontrolled Fire Edge
-  Completed Line
-  Interstate and Highways
-  Roads
-  State Boundary
-  Wildfire Daily Fire Perimeter





-  Aerial Hazard
-  Dip Site
-  Drop Point
-  Retardant/Mud Pit
-  Water Source
-  Division Break
-  Structures
-  Completed Dozer Line
-  Completed Hand Line
-  Road as Completed Line
-  Uncontrolled Fire Edge
-  Interstate and Highways
-  Roads
-  State Boundary
-  Wildfire Daily Fire Perimeter

