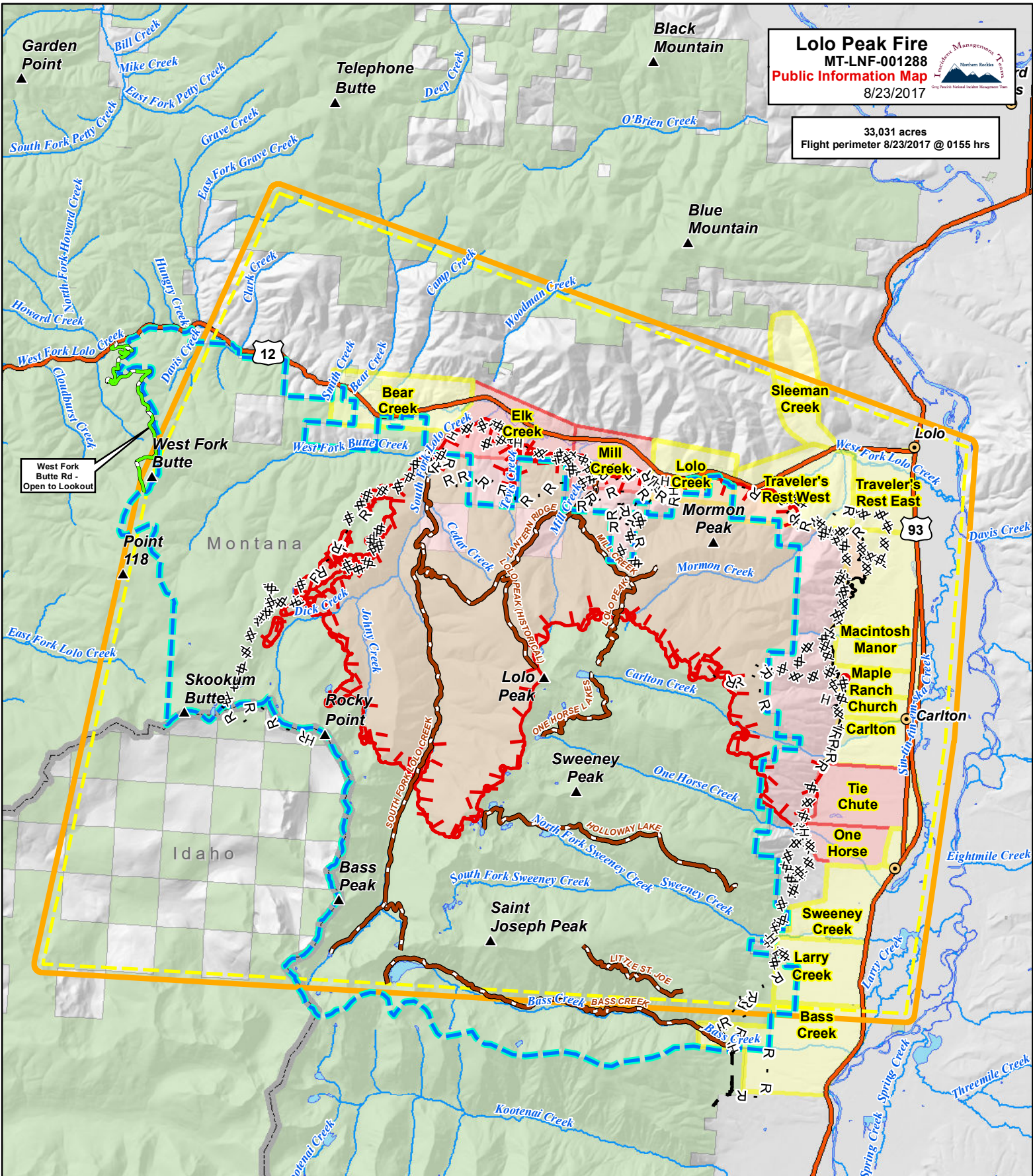


Lolo Peak Fire
 MT-LNF-001288
Public Information Map
 8/23/2017



33,031 acres
 Flight perimeter 8/23/2017 @ 0155 hrs



Evacuation Status		Fire Line		Other	
	Evacuation Order		Uncontrolled Fire Edge		Fire Perimeter
	Evacuation Warning		Completed Fire Line		Forest Service
	Closure Area		H - Completed Hand Line		Planned Fire Line
	Trail Closures		R - Road as Completed Line		Completed Line
	West Fork Butte Rd - Open to Lookout		x - Completed Dozer Line		
	Temporary Flight Restriction - Includes Unmanned Aerial Vehicles (Drones)				

