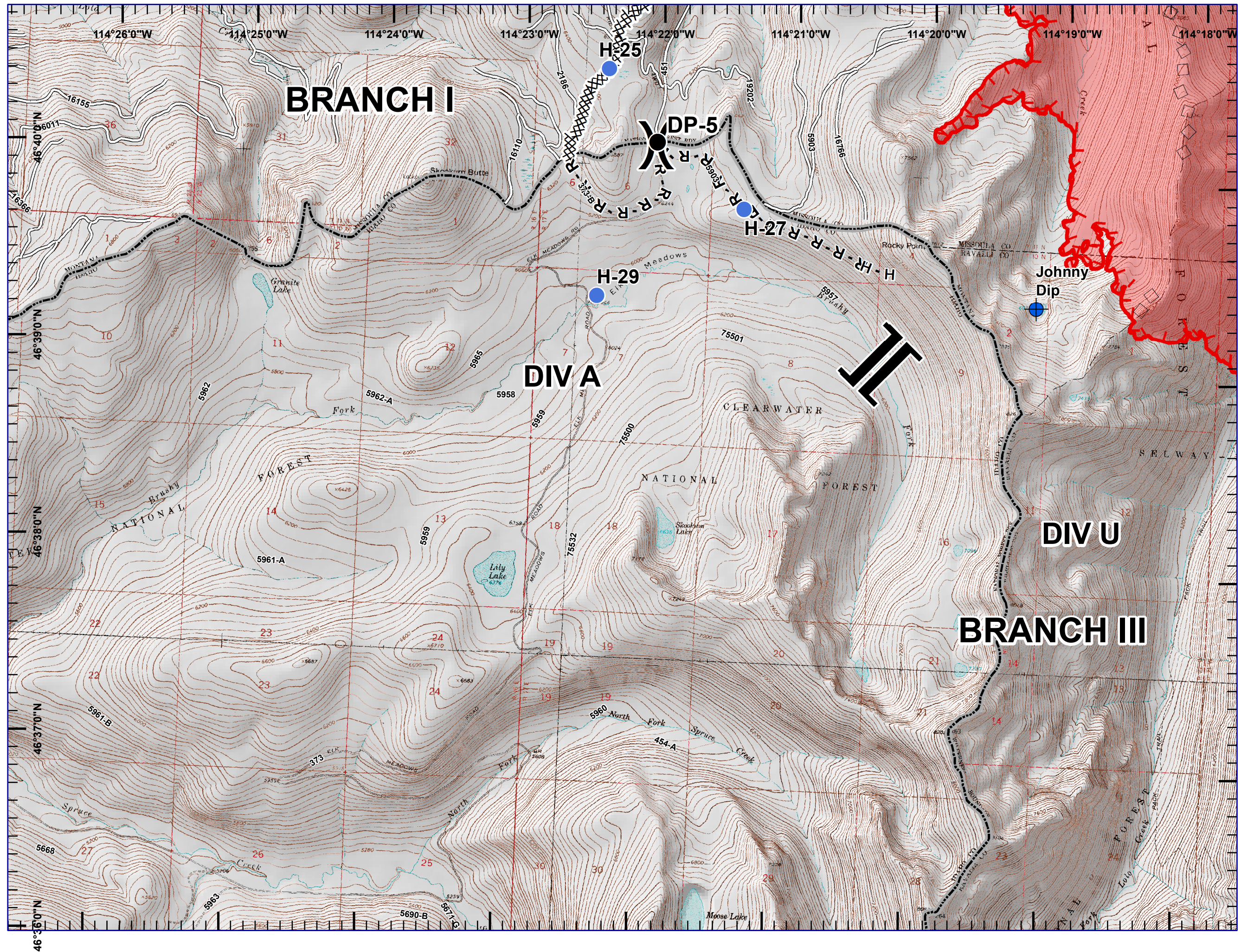
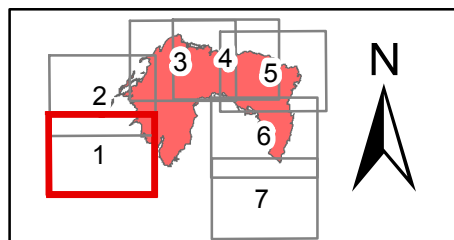
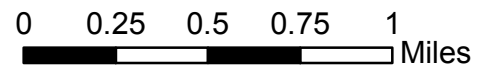


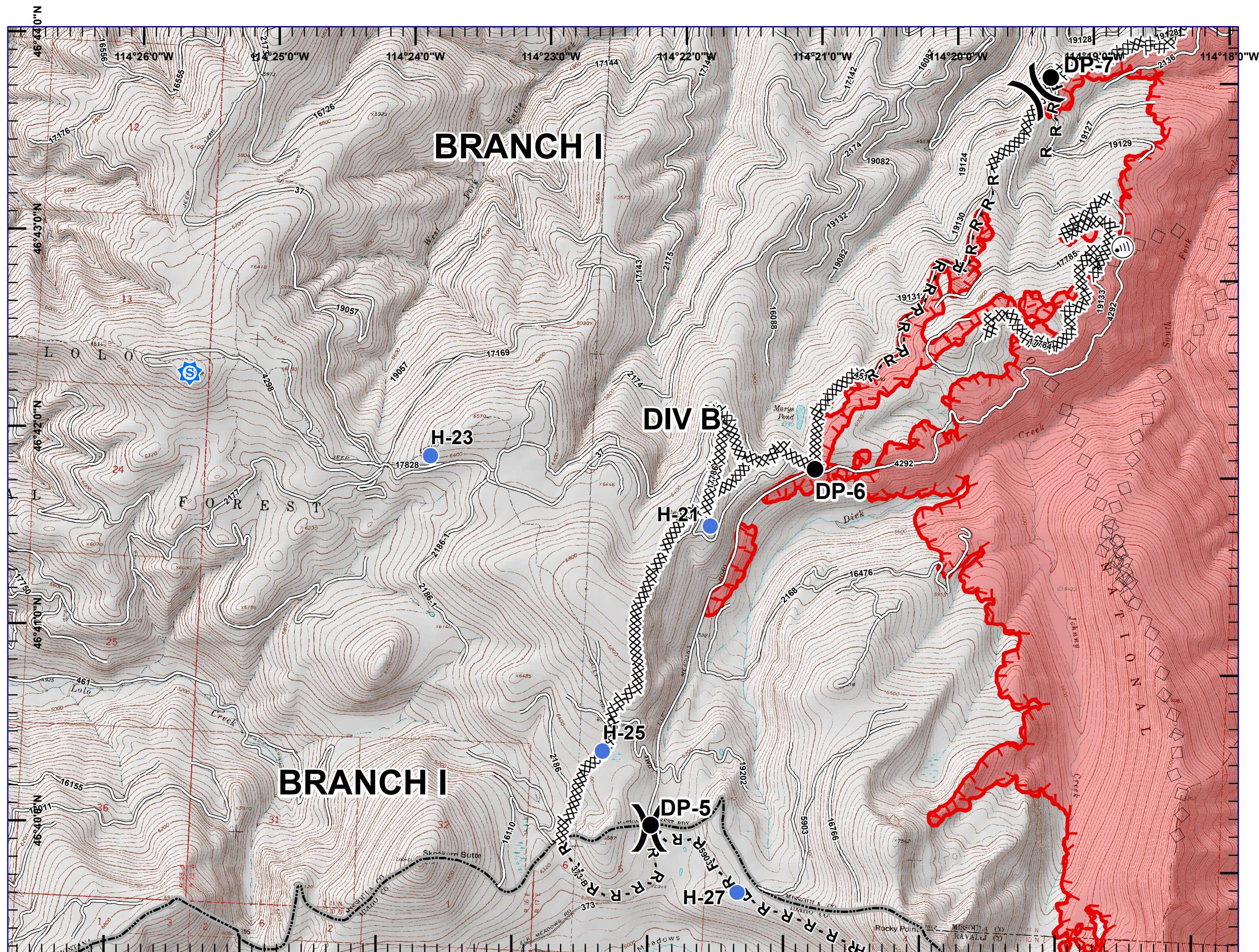
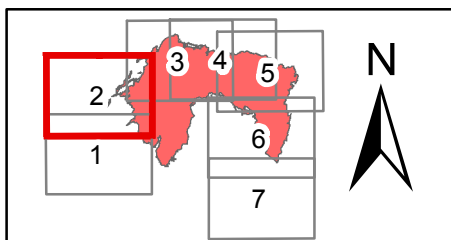
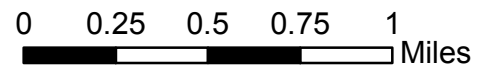


- Dip Site
- Drop Point
- Helispot
- Division Break
- Branch Break
- Completed Dozer Line
- H - H Completed Hand Line
- R - R Road as Completed Line
- Aerial Retardant Drop
- Roads
- Uncontrolled Fire Edge
- State Boundary
- Wildfire Daily Fire Perimeter





- Sheriff Repeater
- Drop Point
- Helispot
- Internet Access
- Division Break
- Completed Dozer Line
- H - H Completed Hand Line
- R - R Road as Completed Line
- Aerial Retardant Drop
- Roads
- Uncontrolled Fire Edge
- State Boundary
- Wildfire Daily Fire Perimeter



Lolo Peak Fire

MT-LNF-001288

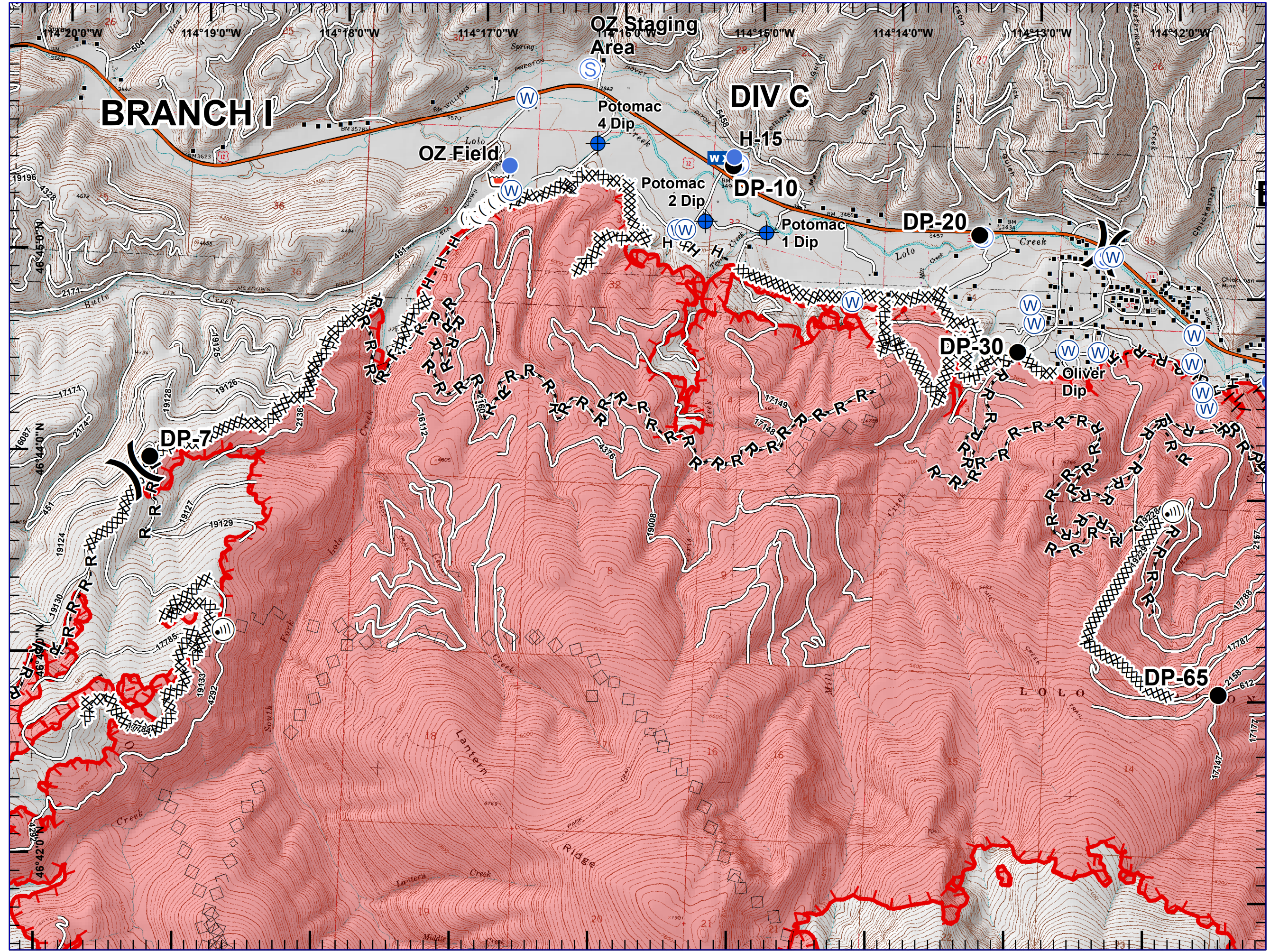
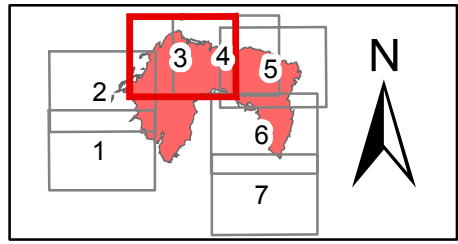
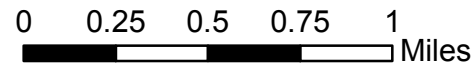
IAP Map, Night Shift

Page 3, Div C

8/23/2017



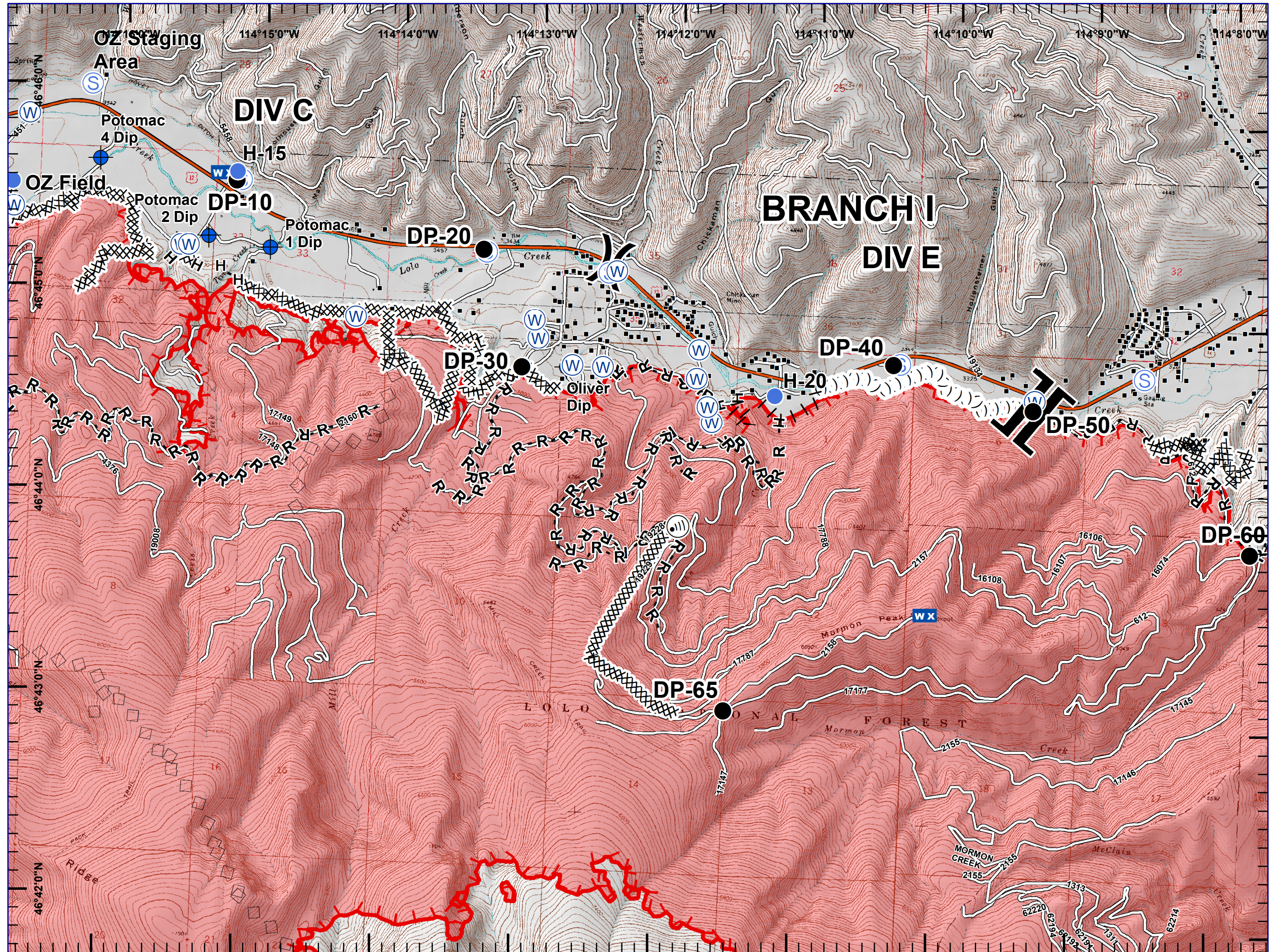
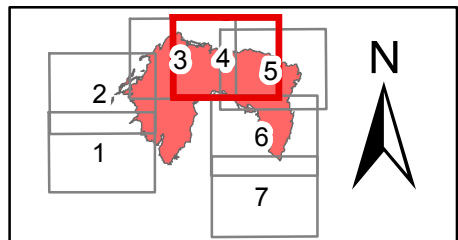
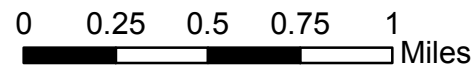
- Dip Site
- Drop Point
- Helispot
- Internet Access
- Mobile Weather Unit
- Retardant/Mud Pit
- Staging Area
- Water Source
- Division Break
- Structures
- Completed Dozer Line
- Completed Hand Line
- Road as Completed Line
- Proposed Burnout
- Aerial Retardant Drop
- Ridge/Geographic Feature
- Interstate and Highways
- Roads
- Uncontrolled Fire Edge
- State Boundary
- Wildfire Daily Fire Perimeter



Lolo Peak Fire
 MT-LNF-001288
IAP Map, Night Shift
Page 4, Div E
 8/23/2017

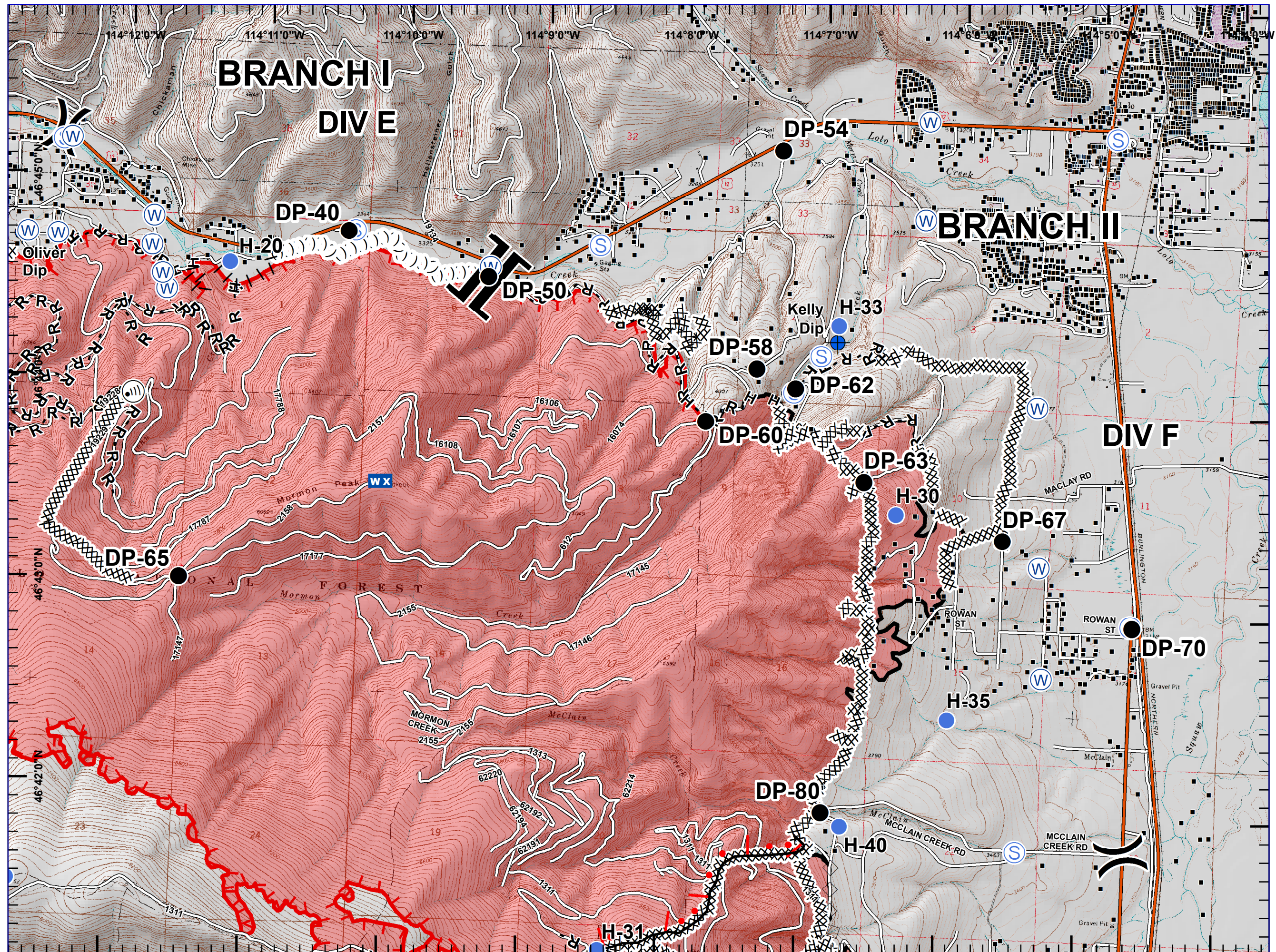
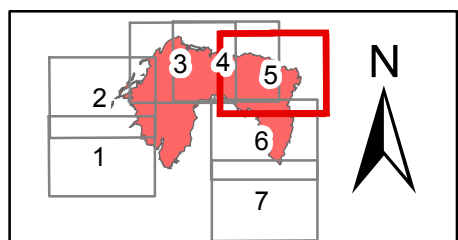
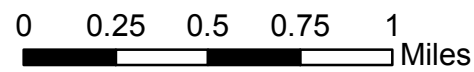


- Dip Site
- Drop Point
- Helispot
- Internet Access
- Mobile Weather Unit
- Retardant/Mud Pit
- Staging Area
- Water Source
- Division Break
- Branch Break
- Structures
- Completed Dozer Line
- Completed Hand Line
- Road as Completed Line
- Proposed Burnout
- Aerial Retardant Drop
- Ridge/Geographic Feature
- Interstate and Highways
- Roads
- Uncontrolled Fire Edge
- Completed Line
- State Boundary
- Wildfire Daily Fire Perimeter





- + Dip Site
- Drop Point
- Helispot
- Internet Access
- WX Mobile Weather Unit
- S Staging Area
- W Water Source
- Division Break
- Branch Break
- Structures
- Completed Dozer Line
- H - H Completed Hand Line
- R - R Road as Completed Line
- Proposed Burnout
- Active Burnout
- Aerial Retardant Drop
- Ridge/Geographic Feature
- Interstate and Highways
- Roads
- Uncontrolled Fire Edge
- Completed Line
- State Boundary
- Wildfire Daily Fire Perimeter



Lolo Peak Fire

MT-LNF-001288

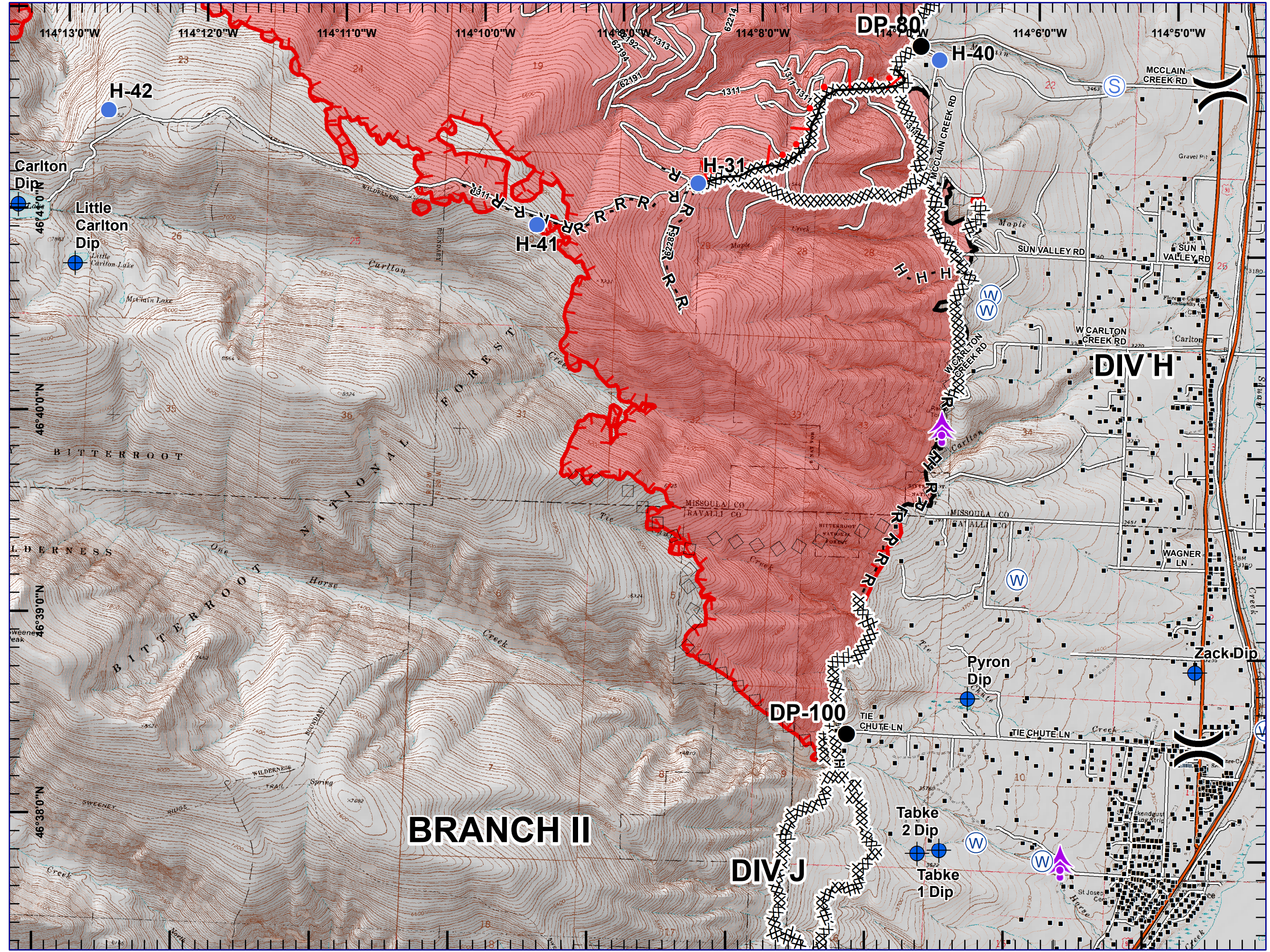
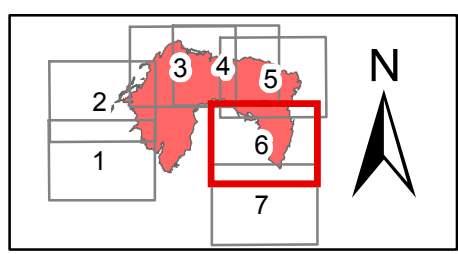
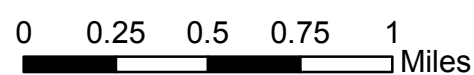
IAP Map, Night Shift

Page 6, Div H

8/23/2017



- Aerial Hazard
- Dip Site
- Drop Point
- Helispot
- Staging Area
- Water Source
- Division Break
- Structures
- Completed Dozer Line
- H - H Completed Hand Line
- R - R Road as Completed Line
- Active Burnout
- Aerial Retardant Drop
- Interstate and Highways
- Roads
- Uncontrolled Fire Edge
- Completed Line
- State Boundary
- Wildfire Daily Fire Perimeter



Lolo Peak Fire












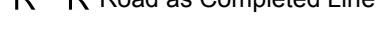


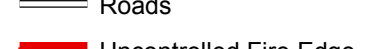


MT-LNF-001288

IAP Map, Night Shift

Page 7, Div J

8/23/2017



-  Aerial Hazard
-  Camp
-  Dip Site
-  Drop Point
-  Retardant/Mud Pit
-  Water Source
-  Division Break
-  Structures
-  Completed Dozer Line
-  H - H Completed Hand Line
-  R - R Road as Completed Line
-  Aerial Retardant Drop
-  Interstate and Highways
-  Roads
-  Uncontrolled Fire Edge
-  State Boundary
-  Wildfire Daily Fire Perimeter

