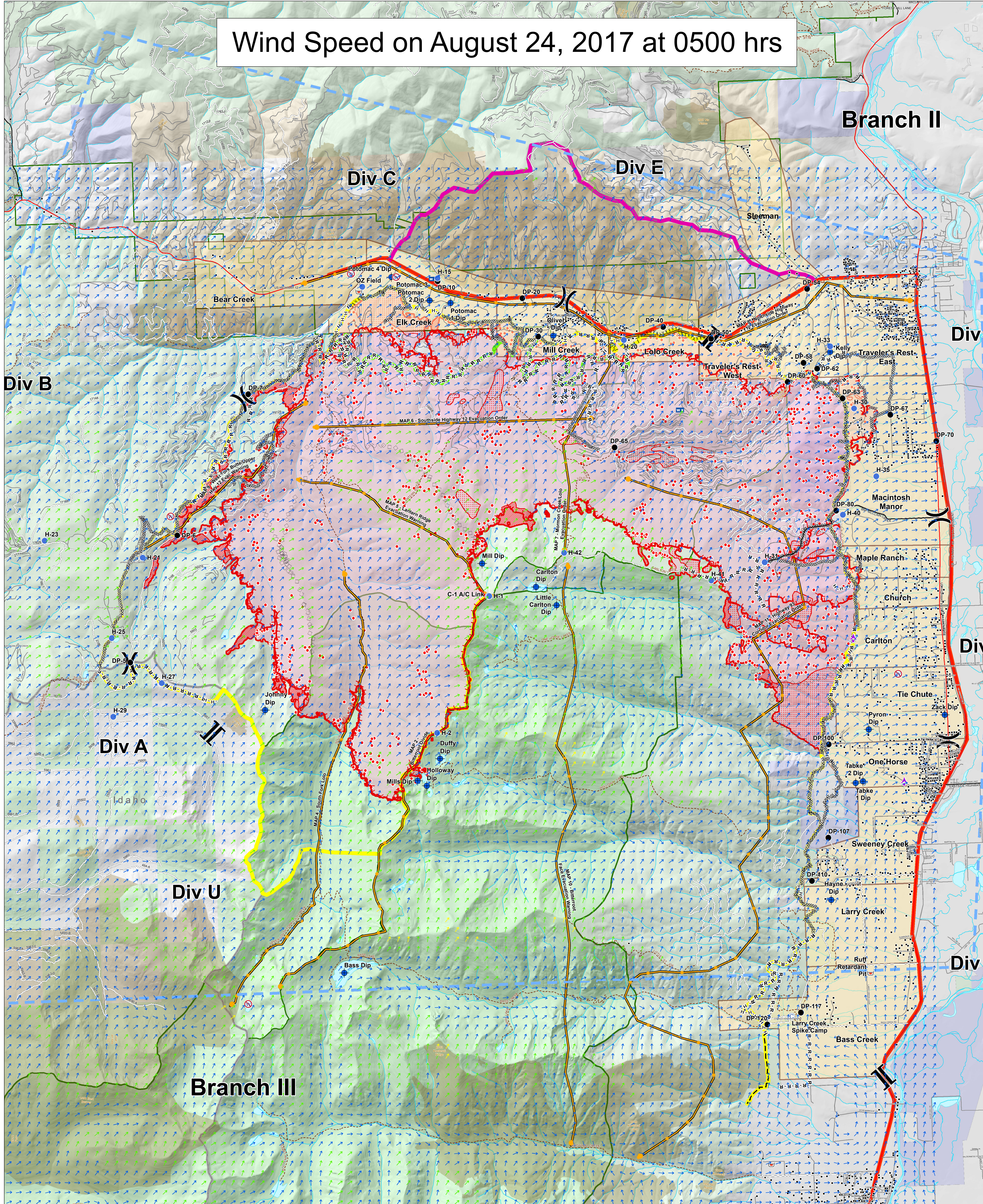


Wind Speed MAP on August 24, 2017 at 0500 hrs



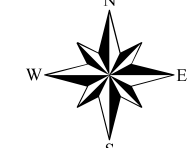
Lolo Peak Fire Wind Ninja

MT-LNF-001288
August 23, 2017
33,031 Acres



IR data from 8/23/2017 at 0155 hrs.

- IR Isolated Heat Sources
- IR Intense Heat
- ▨ IR Scattered Heat



- | | | | | | |
|---|--|---|--|---|---|
| ▲ Aerial Hazard | ⊗ Retardant/Mud Pit | ⊗ Completed Dozer Line | ⊗ Uncontrolled Fire Edge | — Primary Line | — Streams |
| ⊙ Camp | ⊗ Restricted Water Source | ⊗ Completed Hand Line | ⊗ TFR | — Alternate Line | — Waterbodies |
| ● Dip Site | ⊗ Division Break | ⊗ Road as Completed Line | ● Management Action Points | — Contingency Line | — State Boundary |
| ● Drop Point | ⊗ Branch Break | ⊗ Proposed Burnout | — Highways | — Emergency Line | — Wilderness |
| ● Helispot | | ⊗ Active Burnout | — County Roads | — Trails | — State |
| ● Internet Access | | ⊗ Planned Fire Line | — Forest Roads | — HomeOwnersGroups | — US Forest Service |
| ⊗ Mobile Weather Unit | | ⊗ Aerial Retardant Drop | — Other Roads | — Wildfire Daily Fire Perimeter | |
| ⊗ Repeater | | ⊗ Ridge/Geographic Feature | ● Structures | — Fire History 1980-Present | |

0 0.475 0.95 1.9 Miles

Wind Speed

- 0-4.5 mph
- 4.5-9 mph
- 9-13.5 mph
- 13.5-18 mph
- 18-23 mph