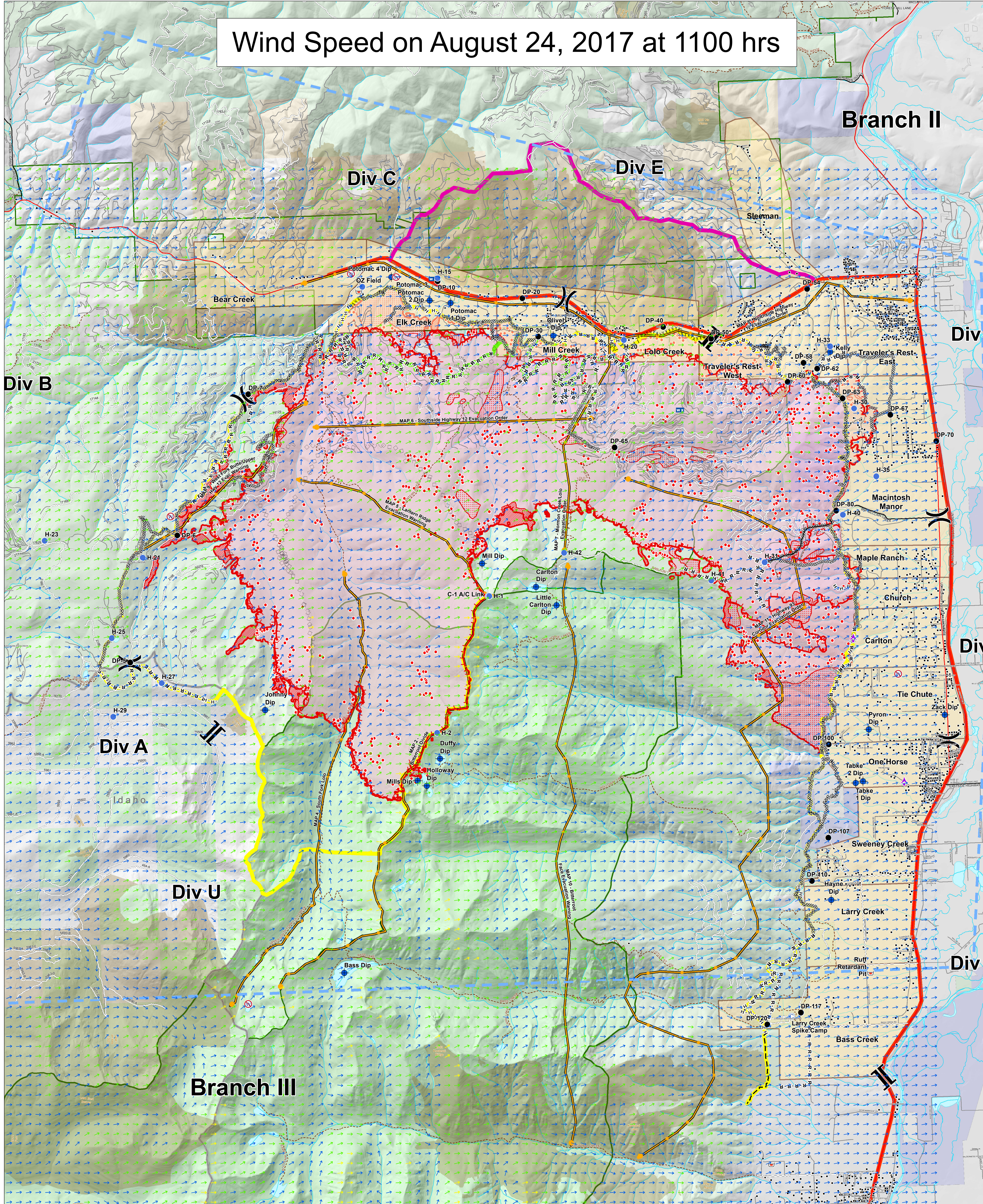


Wind Speed on August 24, 2017 at 1100 hrs

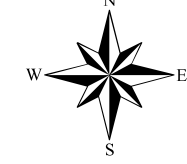
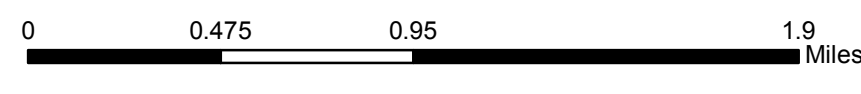


Lolo Peak Fire Wind Ninja

MT-LNF-001288
August 23, 2017
33,031 Acres

IR data from 8/23/2017 at 0155 hrs.

- IR Isolated Heat Sources
- IR Intense Heat
- ▨ IR Scattered Heat



- | | | | | | |
|---------------------|-------------------------|--------------------------|--------------------------|-------------------------------|-------------------|
| Aerial Hazard | Retardant/Mud Pit | Completed Dozer Line | Uncontrolled Fire Edge | Primary Line | Streams |
| Camp | Restricted Water Source | Completed Hand Line | TFR | Alternate Line | Waterbodies |
| Dip Site | Division Break | Road as Completed Line | Management Action Points | Contingency Line | State Boundary |
| Drop Point | Branch Break | Proposed Burnout | Highways | Emergency Line | Wilderness |
| Helispot | | Active Burnout | County Roads | Trails | State |
| Internet Access | | Planned Fire Line | Forest Roads | HomeOwnersGroups | US Forest Service |
| Mobile Weather Unit | | Aerial Retardant Drop | Other Roads | Wildfire Daily Fire Perimeter | |
| Repeater | | Ridge/Geographic Feature | Structures | Fire History 1980-Present | |

Wind Speed

- 0-4.5 mph
- 4.5-9 mph
- 9-13.5 mph
- 13.5-18 mph
- 18-23 mph