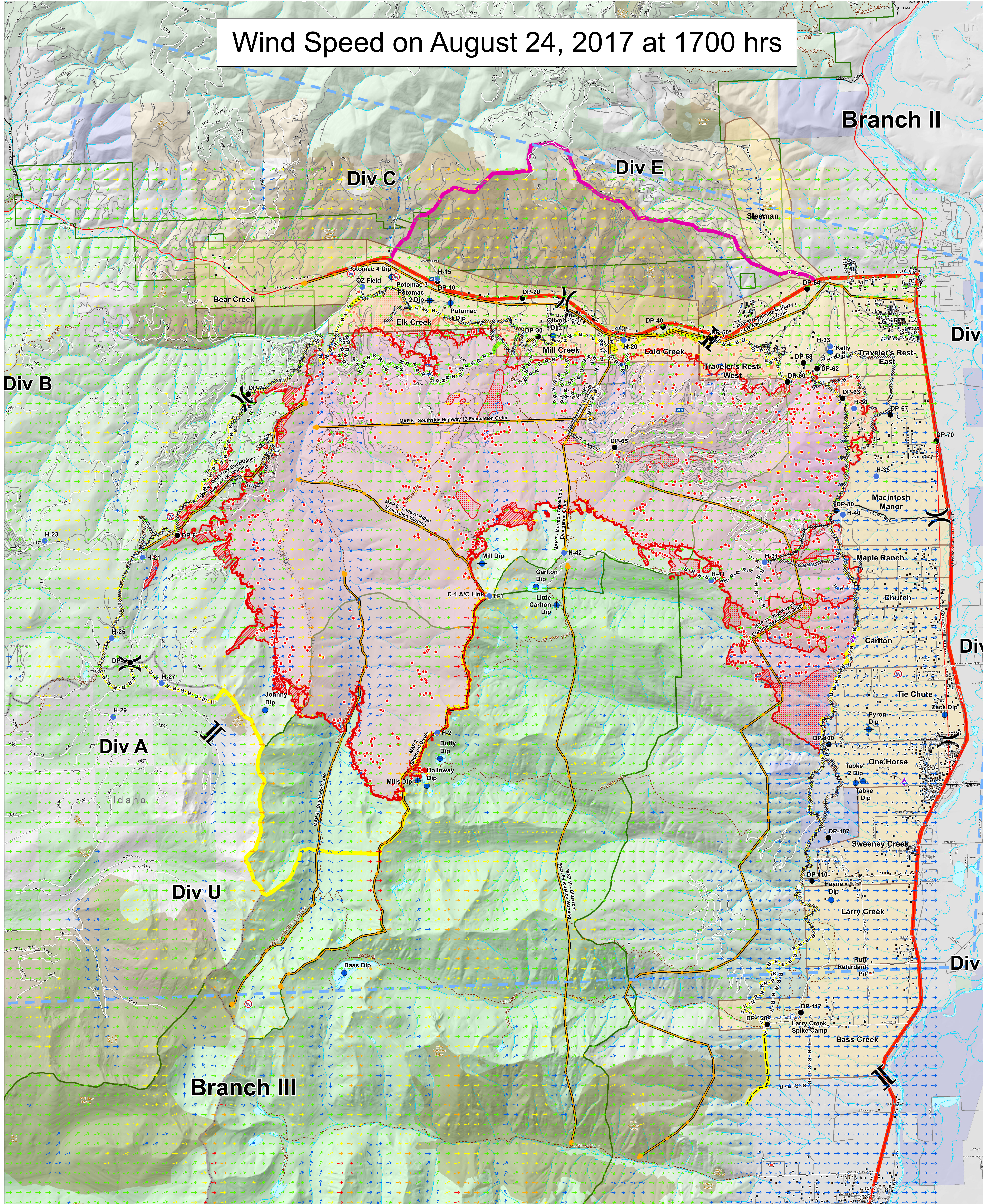


Wind Speed on August 24, 2017 at 1700 hrs



Lolo Peak Fire Wind Ninja

MT-LNF-001288
August 23, 2017
33,031 Acres

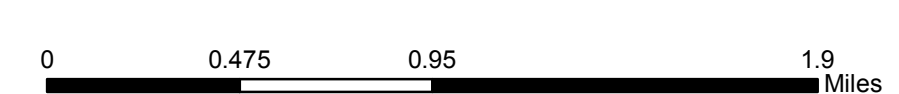


IR data from 8/23/2017 at 0155 hrs.

- IR Isolated Heat Sources
- IR Intense Heat
- IR Scattered Heat



- | | | | | | |
|---|--|---|--|---|---|
| ▲ Aerial Hazard | ⊗ Retardant/Mud Pit | ⊗ Completed Dozer Line | — Uncontrolled Fire Edge | — Primary Line | — Streams |
| ⊙ Camp | ⊗ Restricted Water Source | — Completed Hand Line | — TFR | — Alternate Line | — Waterbodies |
| ◆ Dip Site | ⊗ Division Break | — Road as Completed Line | — Management Action Points | — Contingency Line | — State Boundary |
| ● Drop Point | ⊗ Branch Break | — Proposed Burnout | — Highways | — Emergency Line | — Wilderness |
| ⊙ Helispot | ⊗ Branch Break | — Active Burnout | — County Roads | — Trails | — State |
| ⊙ Internet Access | ⊗ Branch Break | — Planned Fire Line | — Forest Roads | — HomeOwnersGroups | — US Forest Service |
| ⊙ Mobile Weather Unit | ⊗ Branch Break | — Aerial Retardant Drop | — Other Roads | — Wildfire Daily Fire Perimeter | |
| ⊙ Repeater | ⊗ Branch Break | — Ridge/Geographic Feature | ● Structures | — Fire History 1980-Present | |



Wind Speed

- 0-4.5 mph
- 4.5-9 mph
- 9-13.5 mph
- 13.5-18 mph
- 18-23 mph