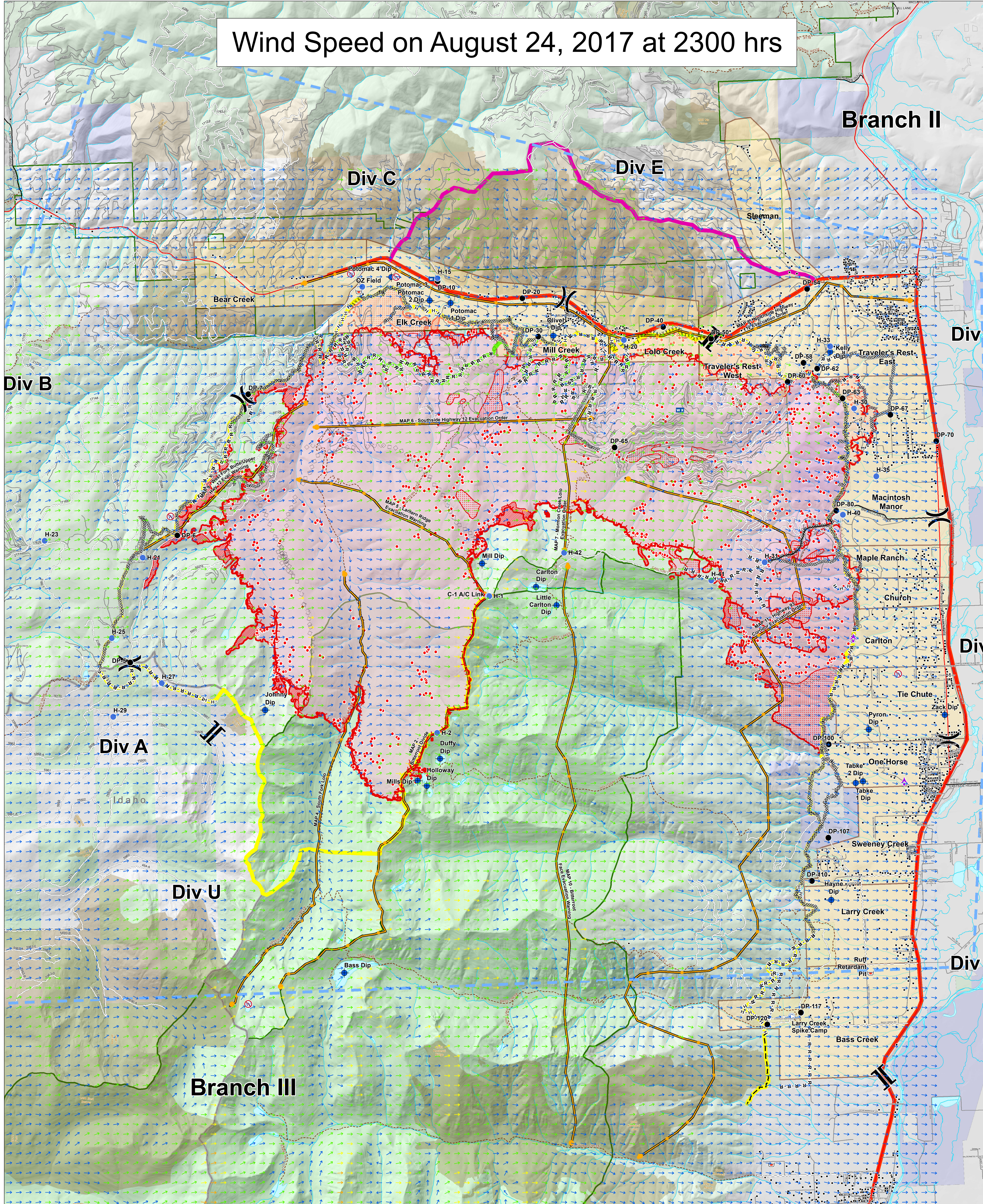


Wind Speed on August 24, 2017 at 2300 hrs



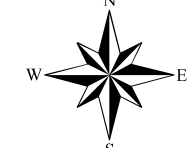
Lolo Peak Fire Wind Ninja

MT-LNF-001288
August 23, 2017
33,031 Acres



IR data from 8/23/2017 at 0155 hrs.

- IR Isolated Heat Sources
- IR Intense Heat
- IR Scattered Heat



- ▲ Aerial Hazard
- ⊙ Camp
- ◆ Dip Site
- Drop Point
- ⊙ Helispot
- ⊙ Internet Access
- ⊙ Mobile Weather Unit
- ⊙ Repeater
- ⊙ Retardant/Mud Pit
- ⊙ Restricted Water Source
- ⊕ Division Break
- ⊕ Branch Break
- ⊕ Completed Dozer Line
- ⊕ Completed Hand Line
- ⊕ Road as Completed Line
- ⊕ Proposed Burnout
- ⊕ Active Burnout
- ⊕ Planned Fire Line
- ⊕ Aerial Retardant Drop
- ⊕ Ridge/Geographic Feature
- ⊕ Uncontrolled Fire Edge
- ⊕ TFR
- ⊕ Management Action Points
- ⊕ Highways
- ⊕ County Roads
- ⊕ Forest Roads
- ⊕ Other Roads
- ⊕ Structures
- ⊕ Primary Line
- ⊕ Alternate Line
- ⊕ Contingency Line
- ⊕ Emergency Line
- ⊕ Trails
- ⊕ HomeOwnersGroups
- ⊕ Wildfire Daily Fire Perimeter
- ⊕ Fire History 1980-Present

- Streams
- Waterbodies
- State Boundary
- Wilderness
- State
- US Forest Service
- 0-4.5 mph
- 4.5-9 mph
- 9-13.5 mph
- 13.5-18 mph
- 18-23 mph

0 0.475 0.95 1.9 Miles