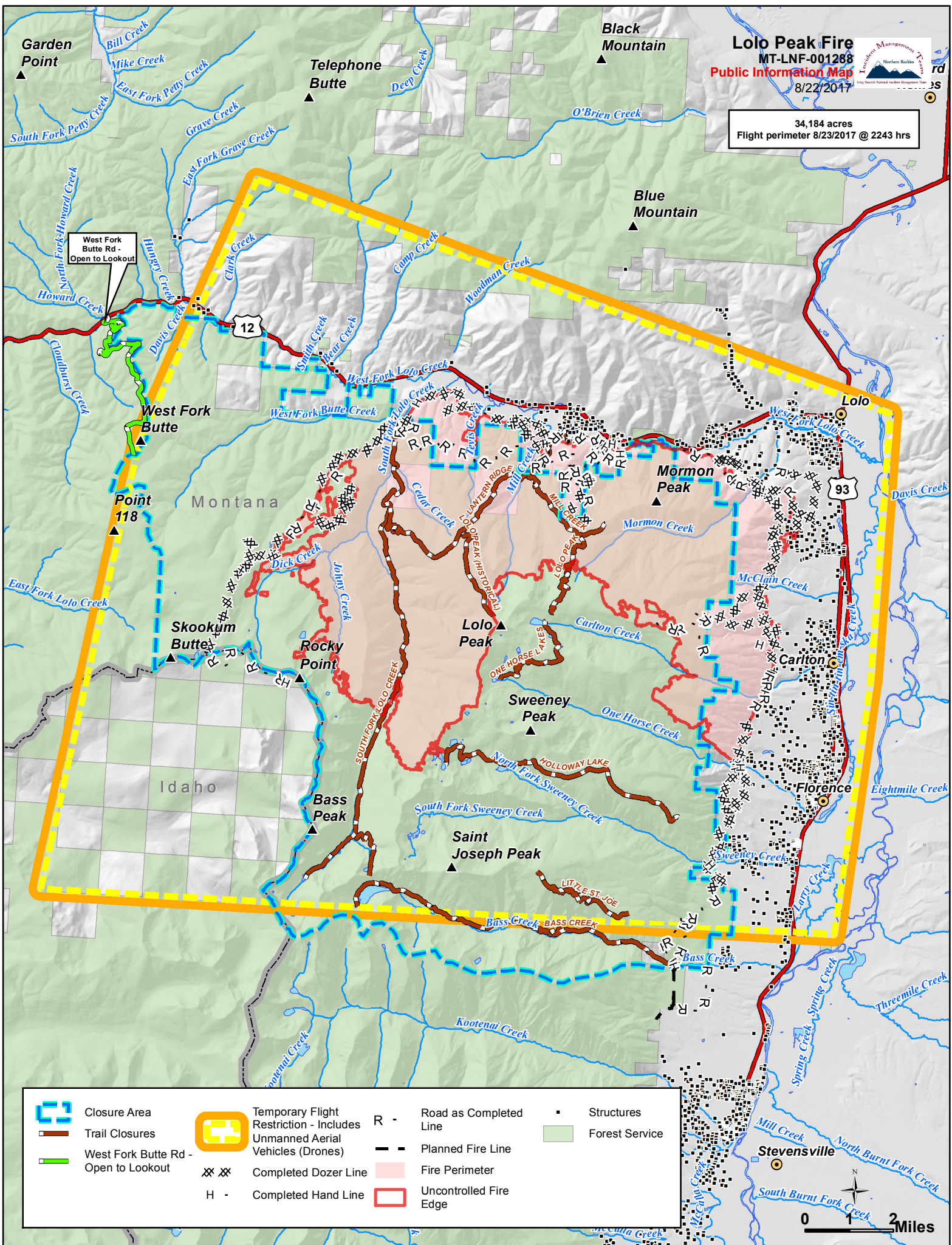


Lolo Peak Fire
 MT-LNF-001288
Public Information Map
 8/22/2017



34,184 acres
 Flight perimeter 8/23/2017 @ 2243 hrs



	Closure Area		Temporary Flight Restriction - Includes Unmanned Aerial Vehicles (Drones)	R -	Road as Completed Line	▪	Structures
	Trail Closures		Completed Dozer Line	---	Planned Fire Line	■	Forest Service
	West Fork Butte Rd - Open to Lookout		Completed Hand Line		Fire Perimeter		Uncontrolled Fire Edge

