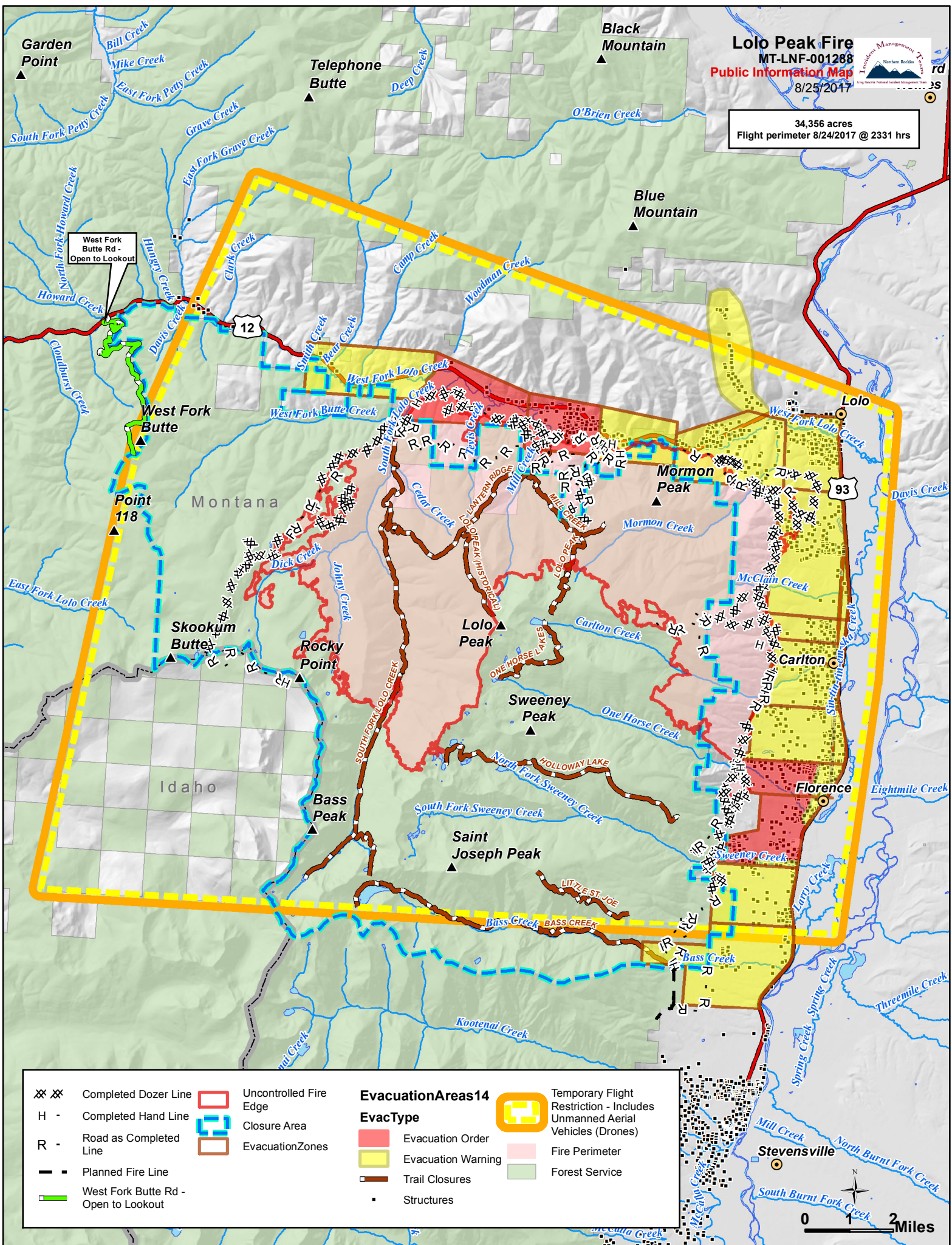


Lolo Peak Fire
 MT-LNF-001288
Public Information Map
 8/25/2017



34,356 acres
 Flight perimeter 8/24/2017 @ 2331 hrs



<ul style="list-style-type: none"> XX Completed Dozer Line H - Completed Hand Line R - Road as Completed Line — Planned Fire Line — West Fork Butte Rd - Open to Lookout 	<ul style="list-style-type: none"> Uncontrolled Fire Edge Closure Area Evacuation Zones 	<p>EvacuationAreas14</p> <p>EvacType</p> <ul style="list-style-type: none"> Evacuation Order Evacuation Warning Trail Closures Structures 	<ul style="list-style-type: none"> Temporary Flight Restriction - Includes Unmanned Aerial Vehicles (Drones) Fire Perimeter Forest Service
---	--	---	---

