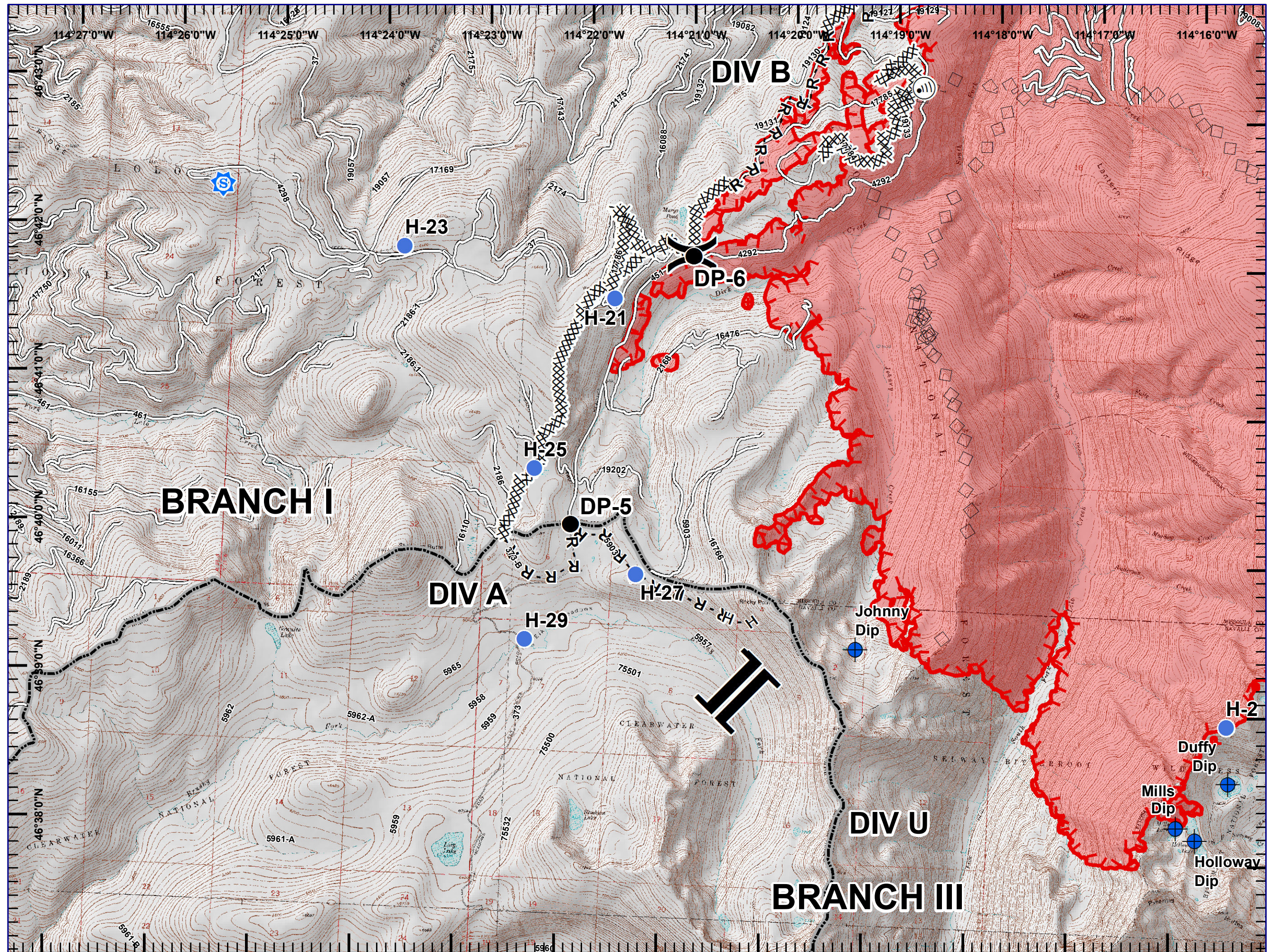
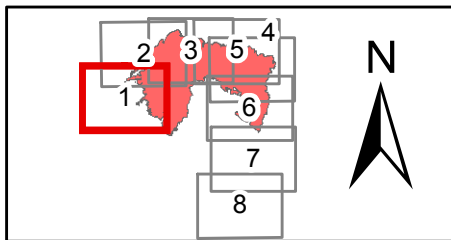




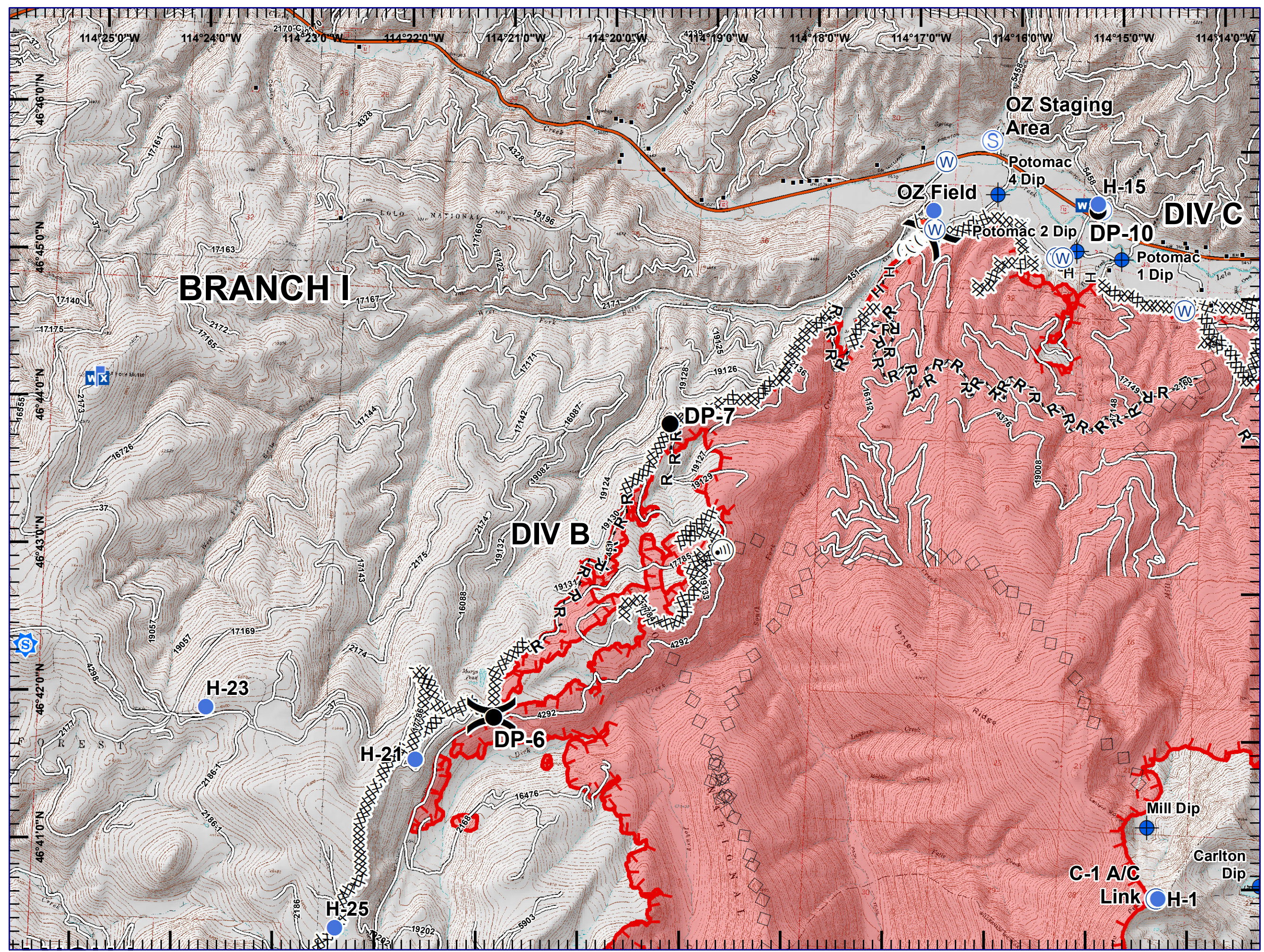
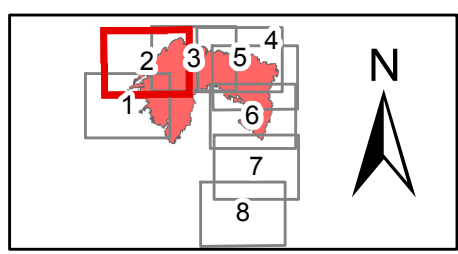
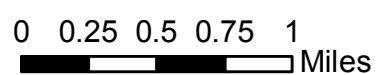
- Sheriff Repeater
- Dip Site
- Drop Point
- Helispot
- Internet Access
- Division Break
- Branch Break
- Completed Dozer Line
- Completed Hand Line
- Road as Completed Line
- Aerial Retardant Drop
- Roads
- Uncontrolled Fire Edge
- State Boundary
- Wildfire Daily Fire Perimeter

0 0.25 0.5 0.75 1 Miles





- Sheriff Repeater
- Dip Site
- Drop Point
- Helispot
- Internet Access
- Lookout
- Mobile Weather Unit
- Repeater
- Retardant/Mud Pit
- Staging Area
- Water Source
- Division Break
- Structures
- Completed Dozer Line
- Completed Hand Line
- Road as Completed Line
- Aerial Retardant Drop
- Ridge/Geographic Feature
- Interstate and Highways
- Roads
- Uncontrolled Fire Edge
- State Boundary
- Wildfire Daily Fire Perimeter

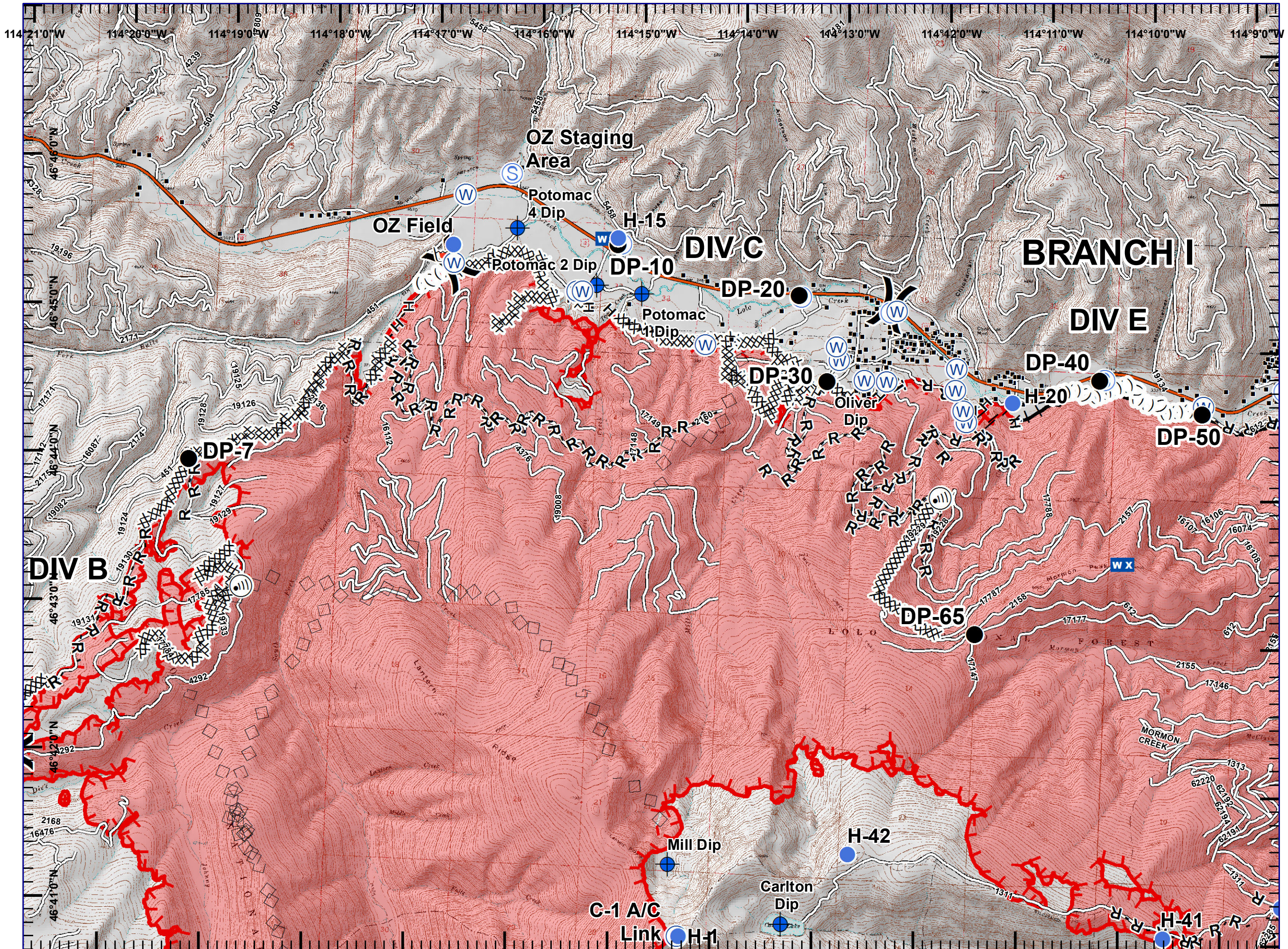
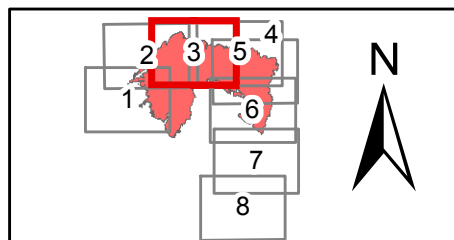


Lolo Peak Fire
 MT-LNF-001288
 IAP Map, Day Shift
 Page 3, Div C
 8/25/2017



- Dip Site
- Drop Point
- Helispot
- Internet Access
- Mobile Weather Unit
- Repeater
- Retardant/Mud Pit
- Staging Area
- Water Source
- Division Break
- Structures
- Completed Dozer Line
- Completed Hand Line
- Road as Completed Line
- Proposed Burnout
- Aerial Retardant Drop
- Ridge/Geographic Feature
- Interstate and Highways
- Roads
- Uncontrolled Fire Edge
- Completed Line
- State Boundary
- Wildfire Daily Fire Perimeter

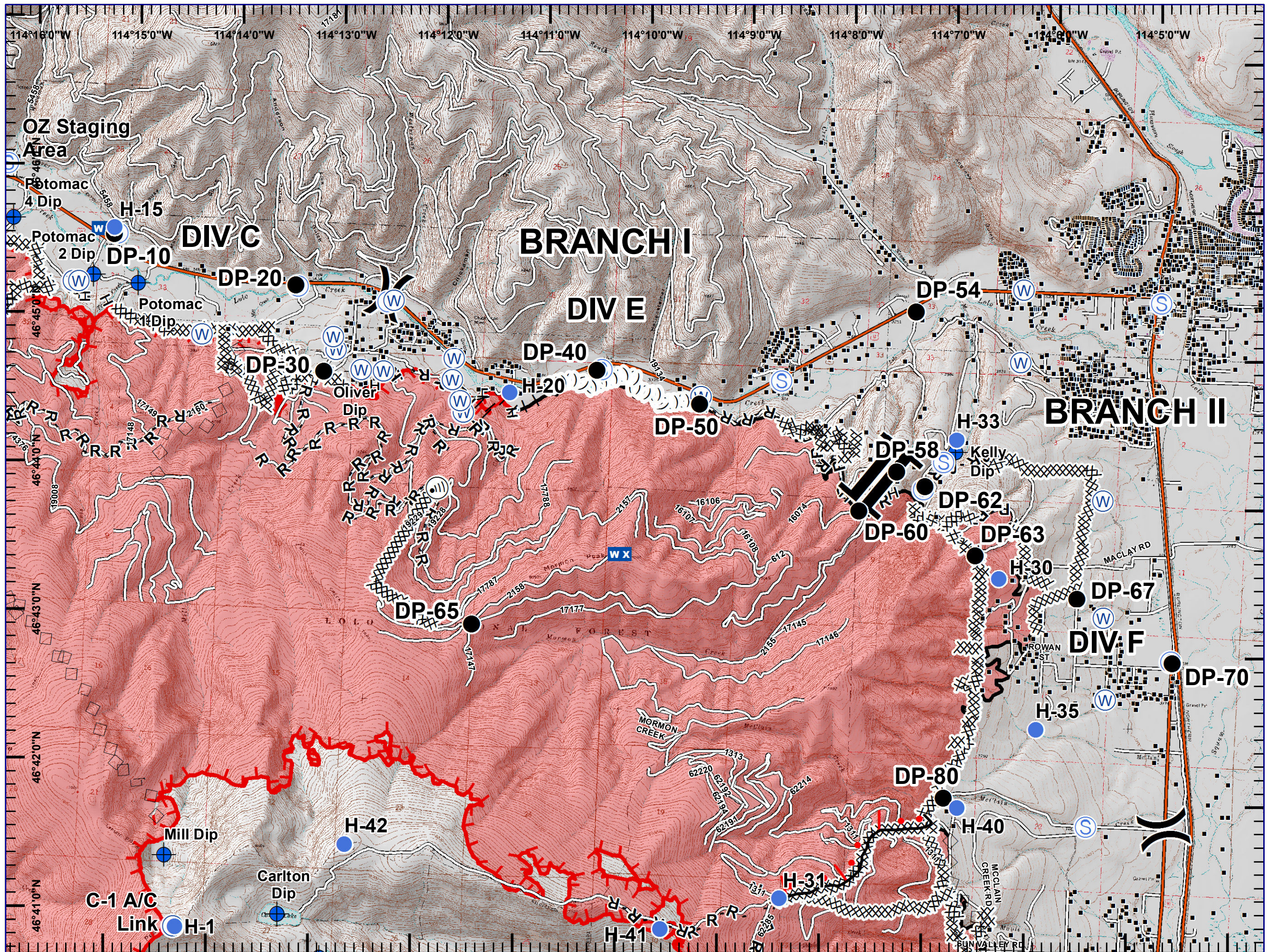
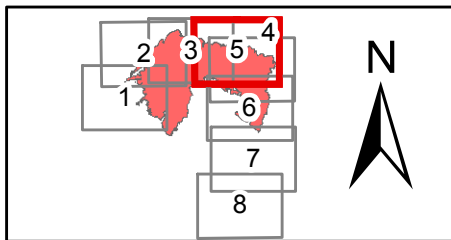
0 0.25 0.5 0.75 1 Miles





- ◆ Dip Site
- Drop Point
- Helispot
- ⊙ Internet Access
- WX Mobile Weather Unit
- R Repeater
- S Staging Area
- W Water Source
-) Division Break
-] Branch Break
- Structures
- Completed Dozer Line
- H - H Completed Hand Line
- R - R Road as Completed Line
- Proposed Burnout
- Active Burnout
- Aerial Retardant Drop
- () Ridge/Geographic Feature
- Interstate and Highways
- Roads
- Uncontrolled Fire Edge
- Completed Line
- State Boundary
- Wildfire Daily Fire Perimeter

0 0.25 0.5 0.75 1 Miles



Lolo Peak Fire

MT-LNF-001288

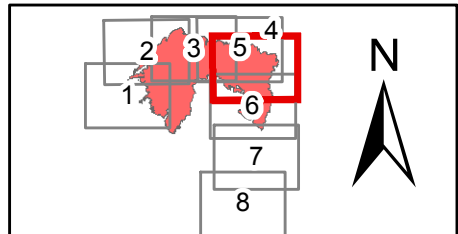
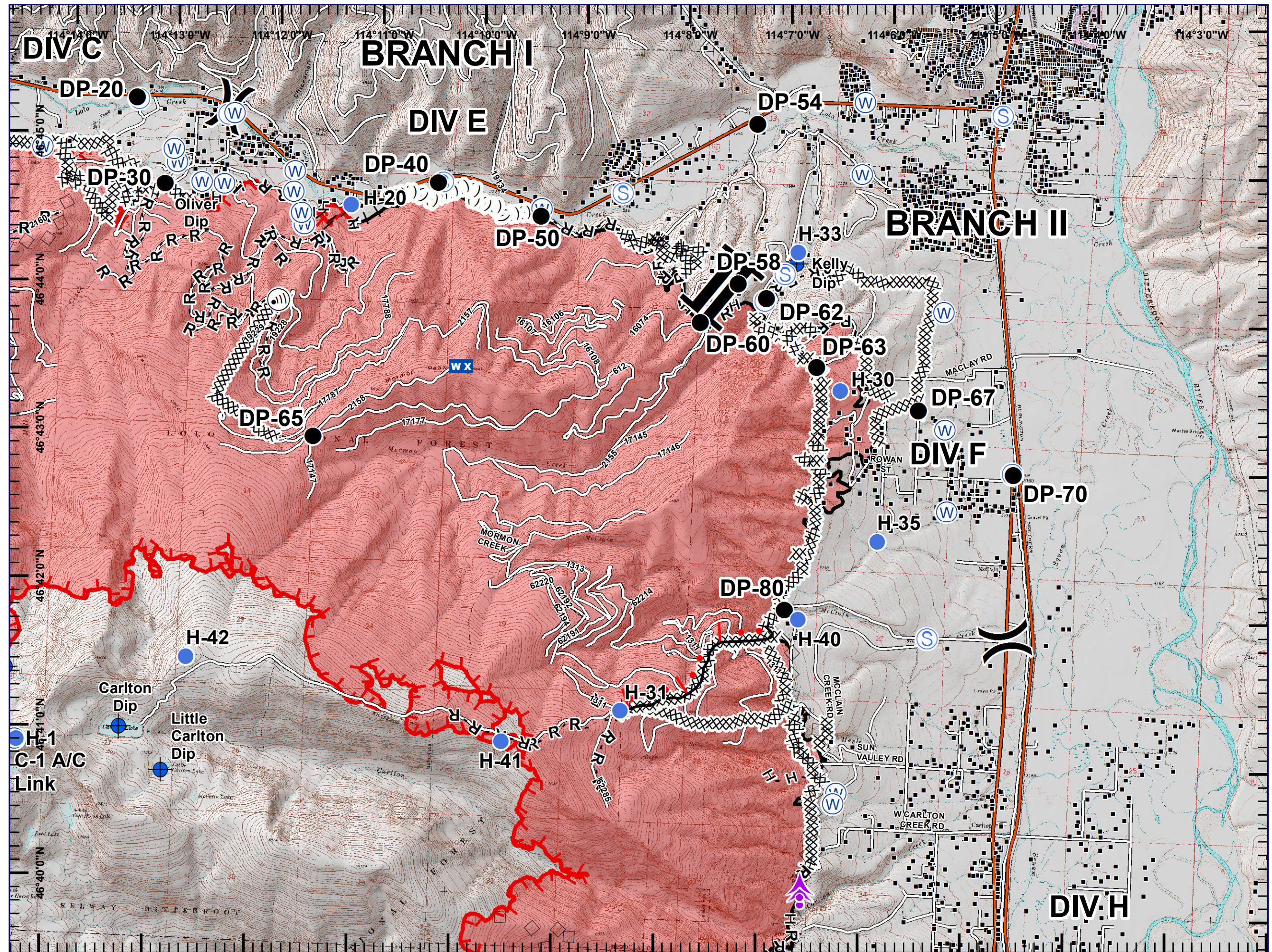
IAP Map, Day Shift

Page 5, Div F

8/25/2017

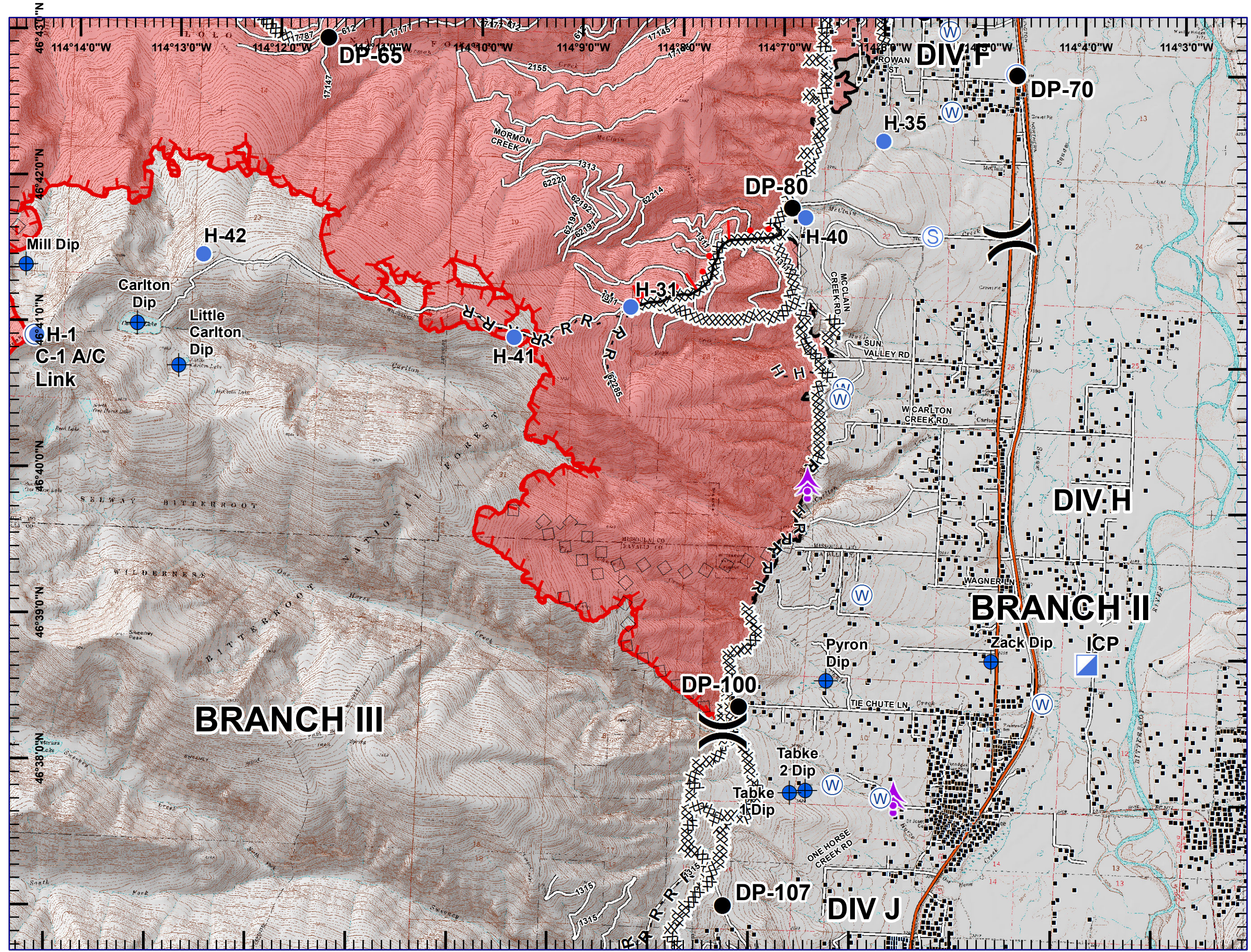
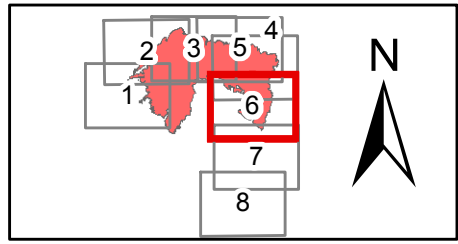
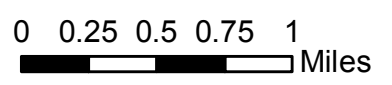


- Aerial Hazard
- Dip Site
- Drop Point
- Helispot
- Internet Access
- Mobile Weather Unit
- Repeater
- Staging Area
- Water Source
- Division Break
- Branch Break
- Structures
- Completed Dozer Line
- Completed Hand Line
- Road as Completed Line
- Proposed Burnout
- Active Burnout
- Aerial Retardant Drop
- Ridge/Geographic Feature
- Interstate and Highways
- Roads
- Uncontrolled Fire Edge
- Completed Line
- State Boundary
- 0.25 0.5 0.75 Miles





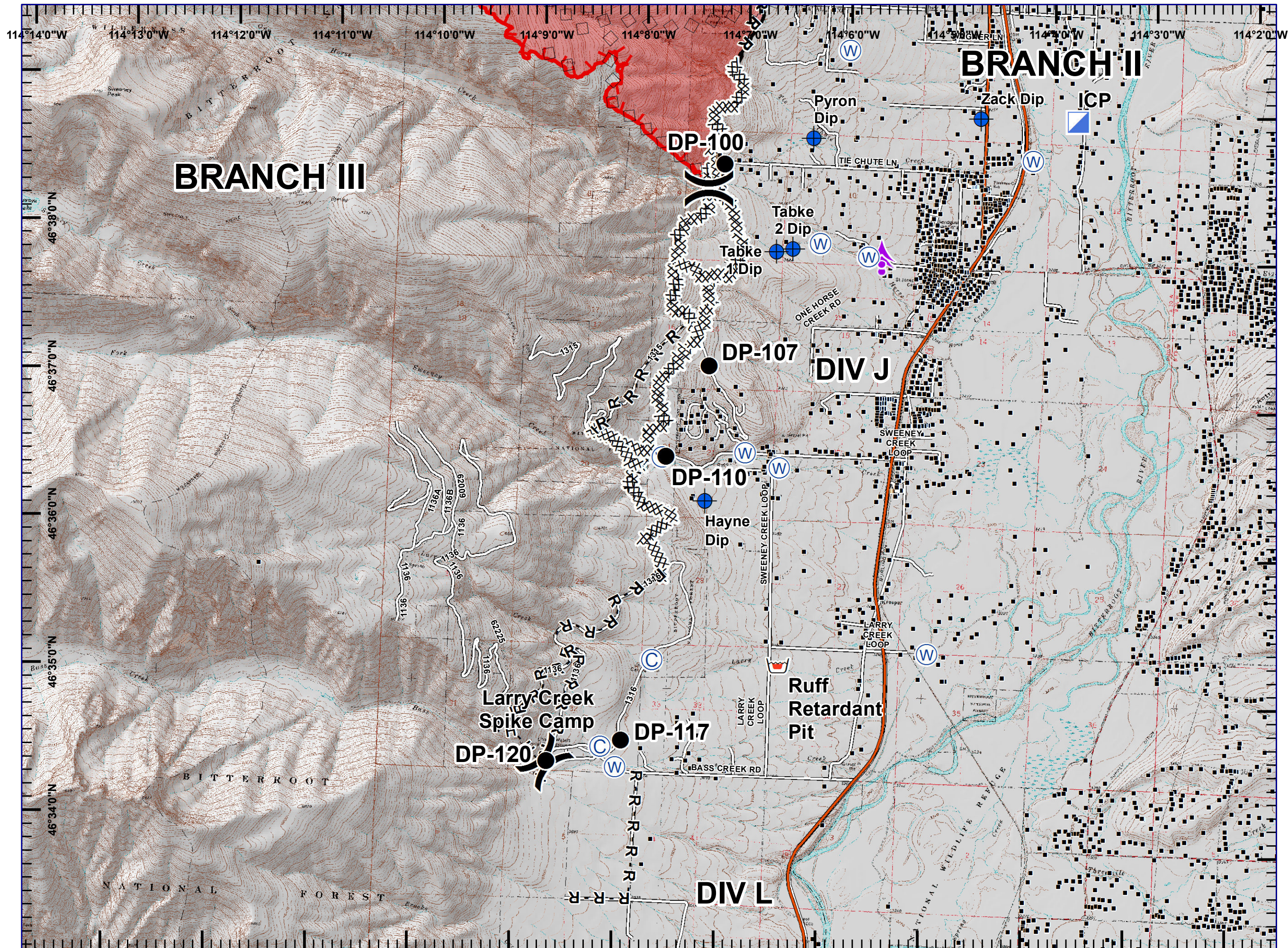
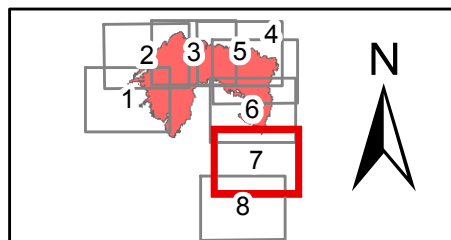
- Aerial Hazard
- Dip Site
- Drop Point
- Helispot
- ICP
- Repeater
- Staging Area
- Water Source
- Division Break
- Structures
- Completed Dozer Line
- H - H Completed Hand Line
- R - R Road as Completed Line
- Active Burnout
- Aerial Retardant Drop
- Interstate and Highways
- Roads
- Uncontrolled Fire Edge
- Completed Line
- State Boundary
- Wildfire Daily Fire Perimeter





- Aerial Hazard
- Camp
- Dip Site
- Drop Point
- ICP
- Retardant/Mud Pit
- Water Source
- Division Break
- Structures
- Completed Dozer Line
- Completed Hand Line
- Road as Completed Line
- Aerial Retardant Drop
- Interstate and Highways
- Roads
- Uncontrolled Fire Edge
- Completed Line
- State Boundary
- Wildfire Daily Fire Perimeter

0 0.25 0.5 0.75 1 Miles





- ⊙ Camp
- ◆ Dip Site
- Drop Point
- ⊕ Helibase
- 👤 Retardant/Mud Pit
- ⊕ Water Source
-) Division Break
- ⌋ Branch Break
- Structures
- XXXX Completed Dozer Line
- H - H Completed Hand Line
- R - R Road as Completed Line
- Interstate and Highways
- Roads
- ▭ State Boundary

0 0.25 0.5 0.75 1 Miles

