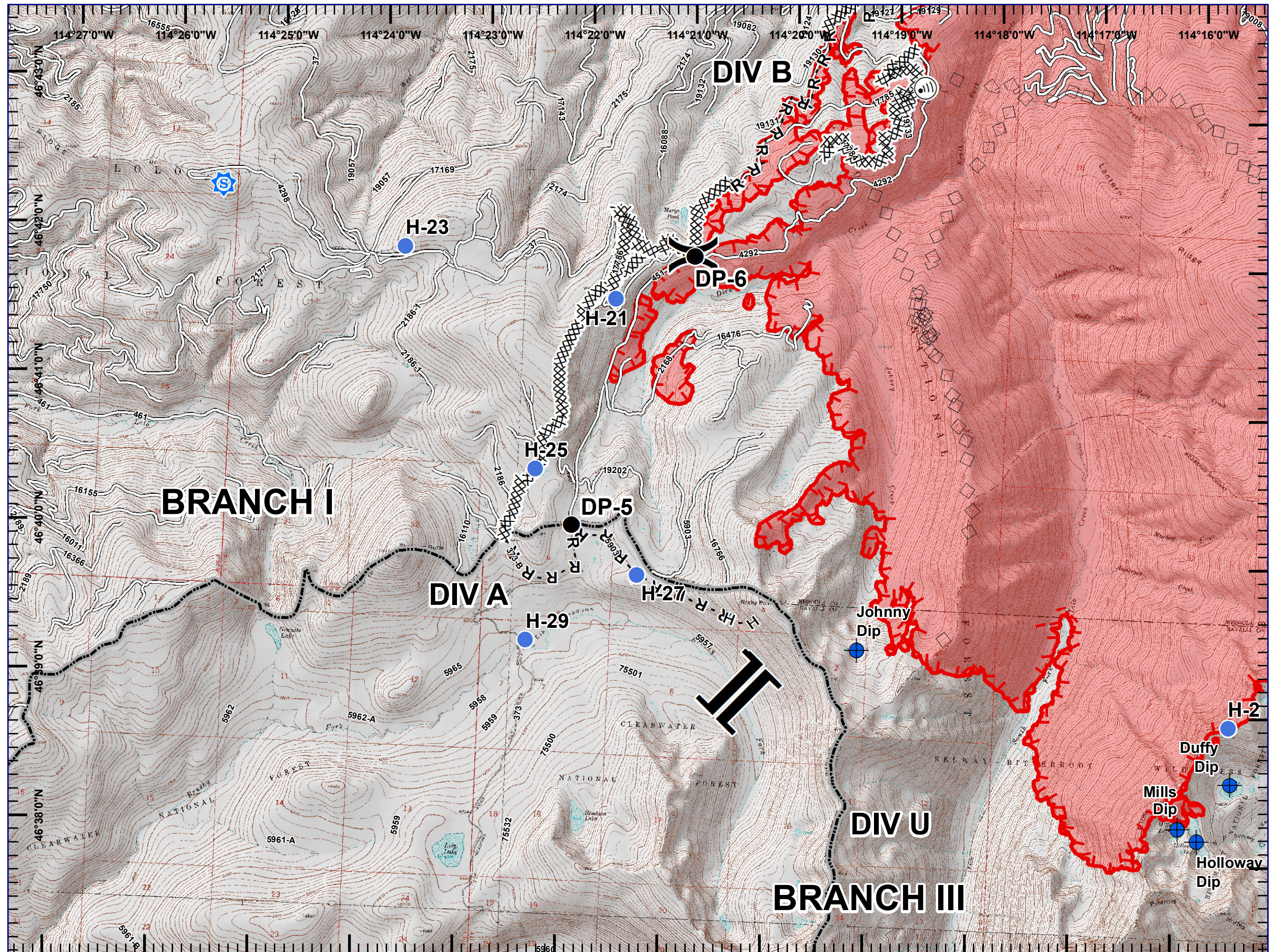
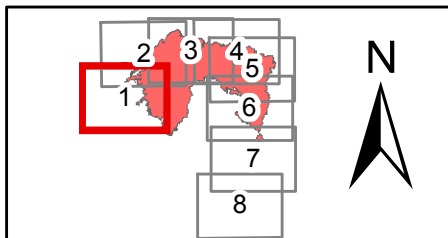




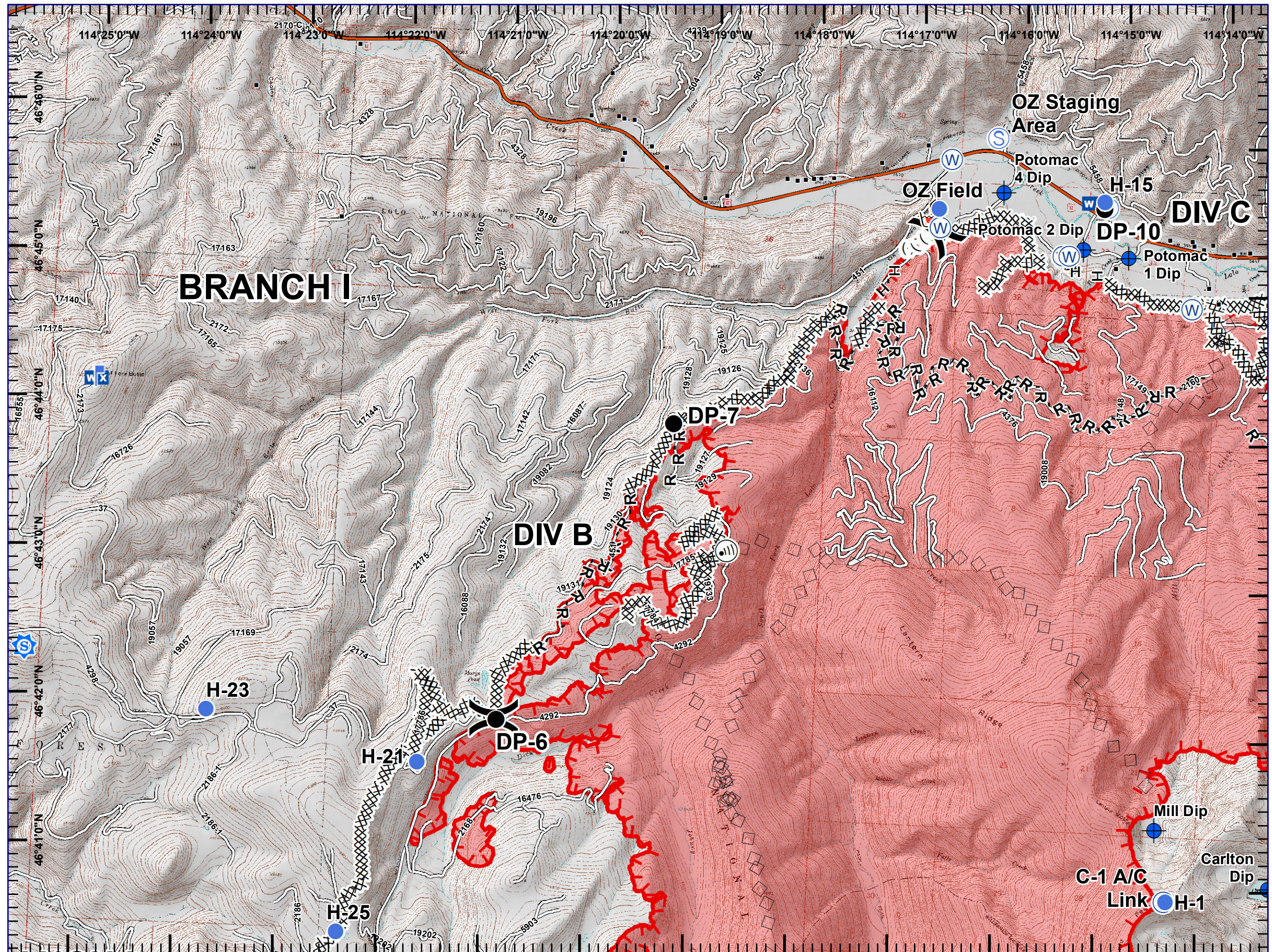
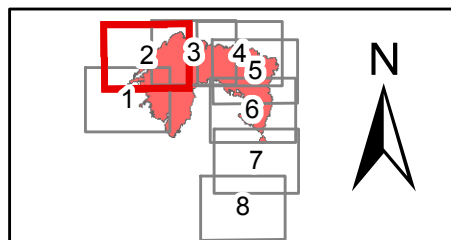
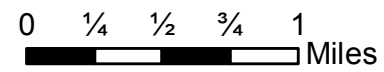
- Sheriff Repeater
- Dip Site
- Drop Point
- Helispot
- Internet Access
- Division Break
- Branch Break
- Completed Dozer Line
- Completed Hand Line
- Road as Completed Line
- Aerial Retardant Drop
- Roads
- Uncontrolled Fire Edge
- State Boundary
- Wildfire Daily Fire Perimeter

0 1/4 1/2 3/4 1 Miles



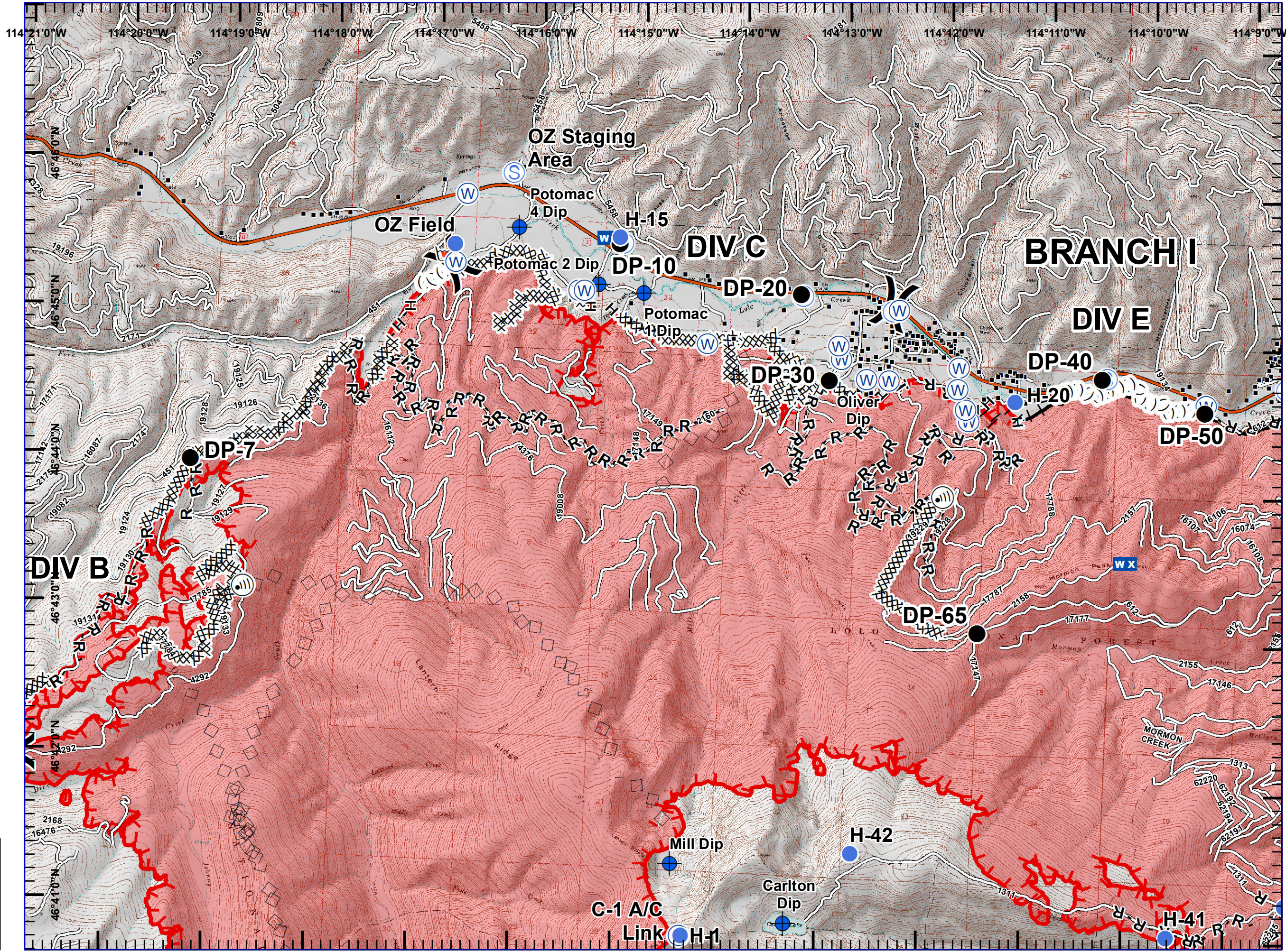
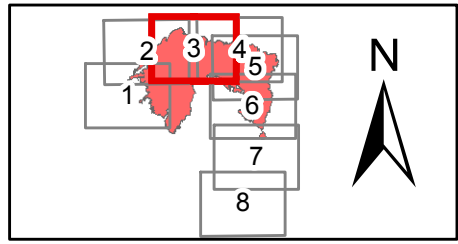
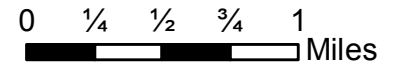


- Sheriff Repeater
- Dip Site
- Drop Point
- Helispot
- Internet Access
- Lookout
- Mobile Weather Unit
- Repeater
- Retardant/Mud Pit
- Staging Area
- Water Source
- Division Break
- Structures
- Completed Dozer Line
- Completed Hand Line
- Road as Completed Line
- Aerial Retardant Drop
- Ridge/Geographic Feature
- Interstate and Highways
- Roads
- Uncontrolled Fire Edge
- State Boundary
- Wildfire Daily Fire Perimeter





- + Dip Site
- Drop Point
- Helispot
- Ⓜ Internet Access
- WX Mobile Weather Unit
- R Repeater
- Retardant/Mud Pit
- S Staging Area
- W Water Source
- ) Division Break
- Structures
- Completed Dozer Line
- H - H Completed Hand Line
- R - R Road as Completed Line
- Proposed Burnout
- ◇ Aerial Retardant Drop
- Ridge/Geographic Feature
- Interstate and Highways
- Roads
- Uncontrolled Fire Edge
- Completed Line
- ▭ State Boundary
- Wildfire Daily Fire Perimeter



# Lolo Peak Fire

MT-LNF-001288

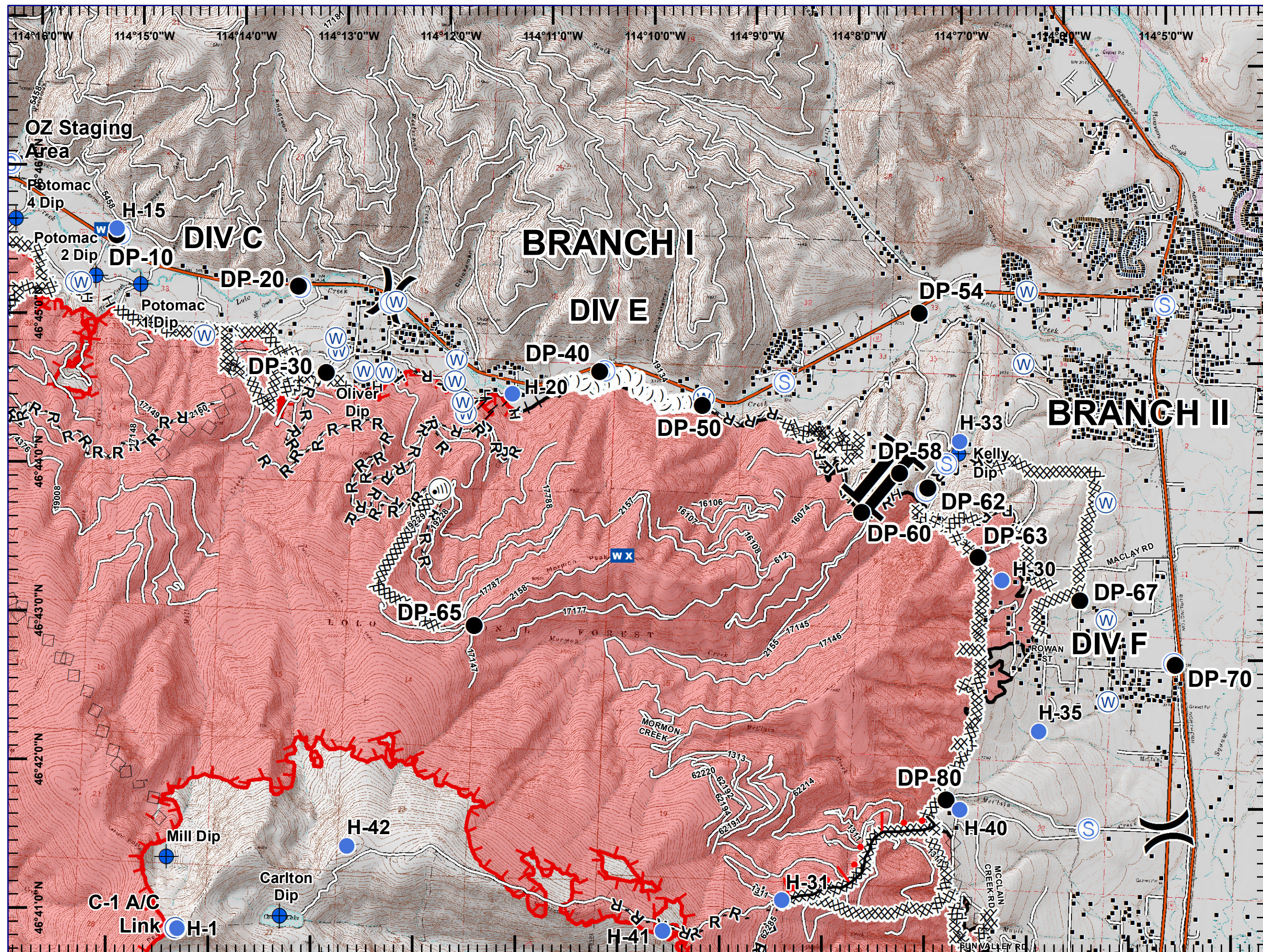
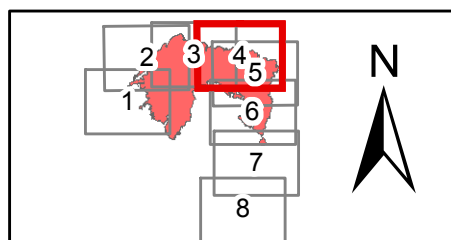
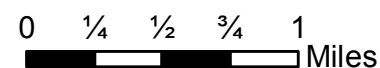
IAP Map, Night Shift

Page 4, Div E

8/25/2017

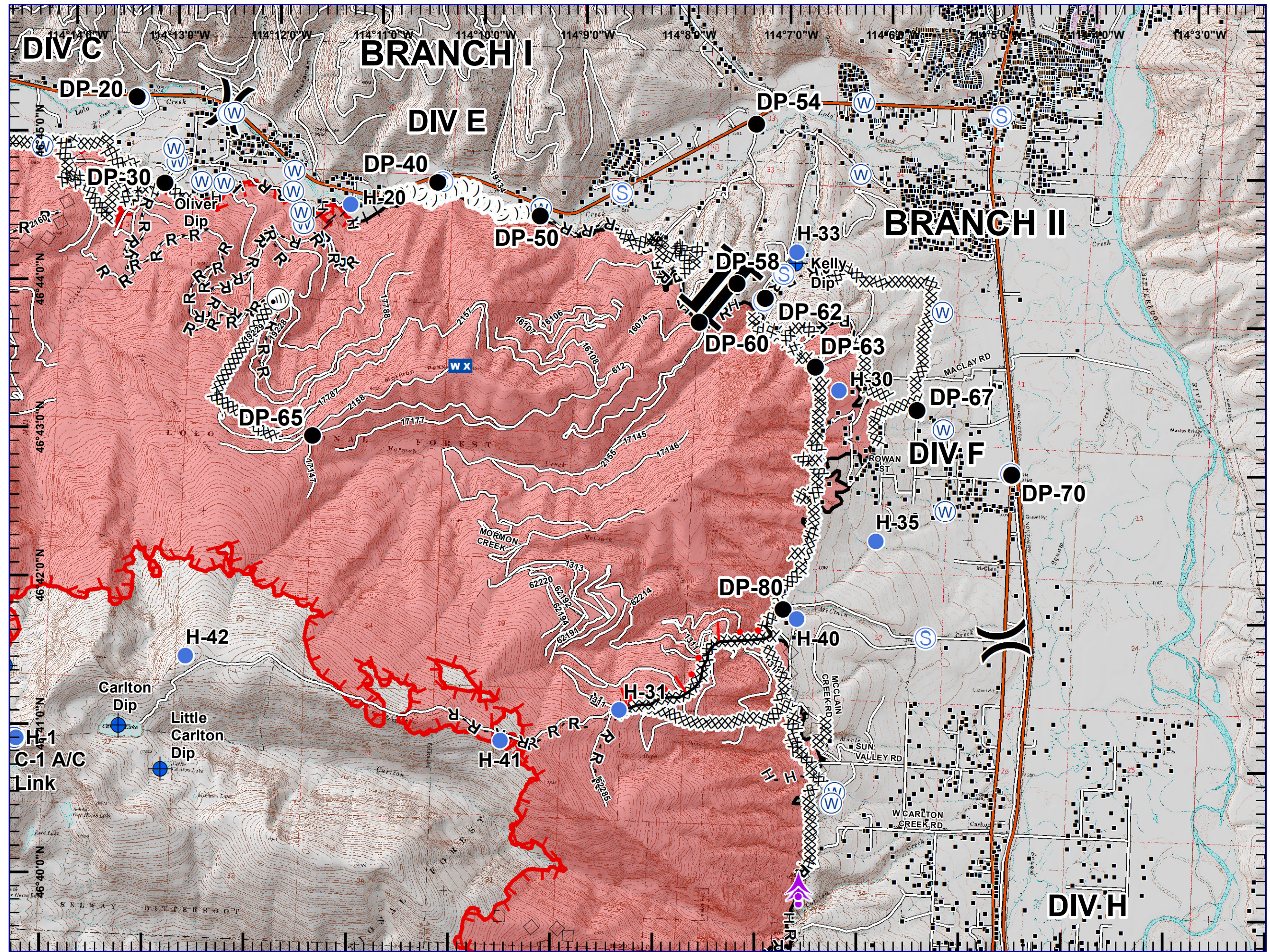
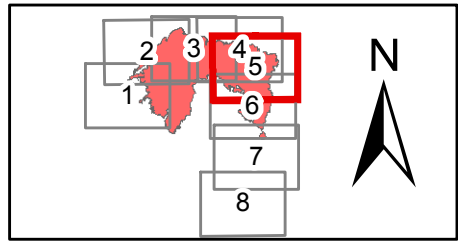


- Dip Site
- Drop Point
- Helispot
- Ⓜ Internet Access
- WX Mobile Weather Unit
- Ⓜ Repeater
- Ⓢ Staging Area
- Ⓜ Water Source
- ) Division Break
- || Branch Break
- Structures
- XXXXX Completed Dozer Line
- H - H Completed Hand Line
- R - R Road as Completed Line
- || Proposed Burnout
- └ Active Burnout
- ◇ Aerial Retardant Drop
- ( ( ) Ridge/Geographic Feature
- Interstate and Highways
- Roads
- └ Uncontrolled Fire Edge
- Completed Line
- ▭ State Boundary
- ▭ Wildfire Daily Fire Perimeter





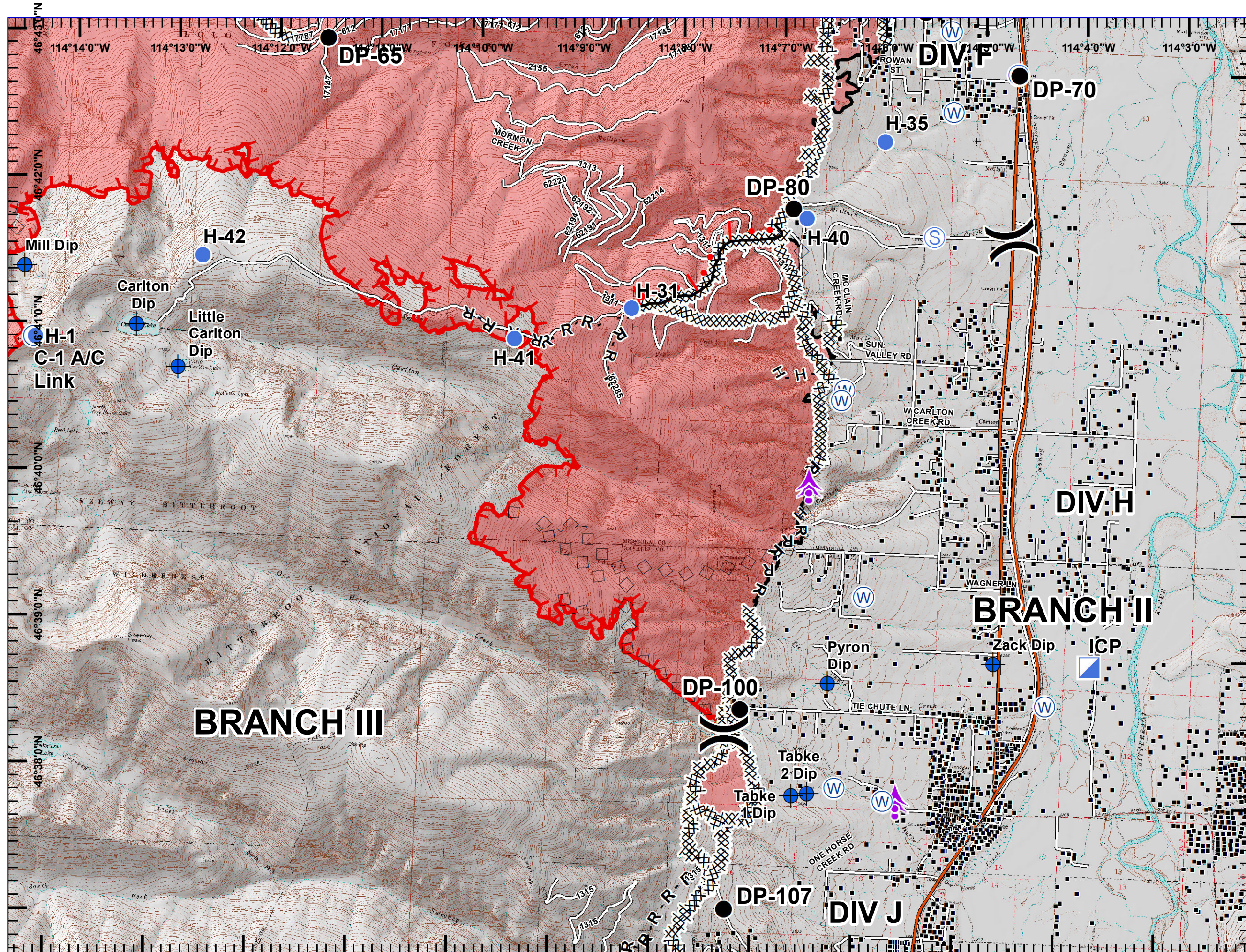
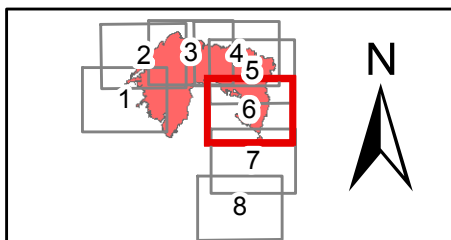
- Aerial Hazard
  - Dip Site
  - Drop Point
  - Helispot
  - Internet Access
  - Mobile Weather Unit
  - Repeater
  - Staging Area
  - Water Source
  - Division Break
  - Branch Break
  - Structures
  - Completed Dozer Line
  - Completed Hand Line
  - Road as Completed Line
  - Proposed Burnout
  - Active Burnout
  - Aerial Retardant Drop
  - Ridge/Geographic Feature
  - Interstate and Highways
  - Roads
  - Uncontrolled Fire Edge
  - Completed Line
  - State Boundary
  - Wildfire Daily Fire Perimeter
- 0 1/4 1/2 3/4 1 Miles





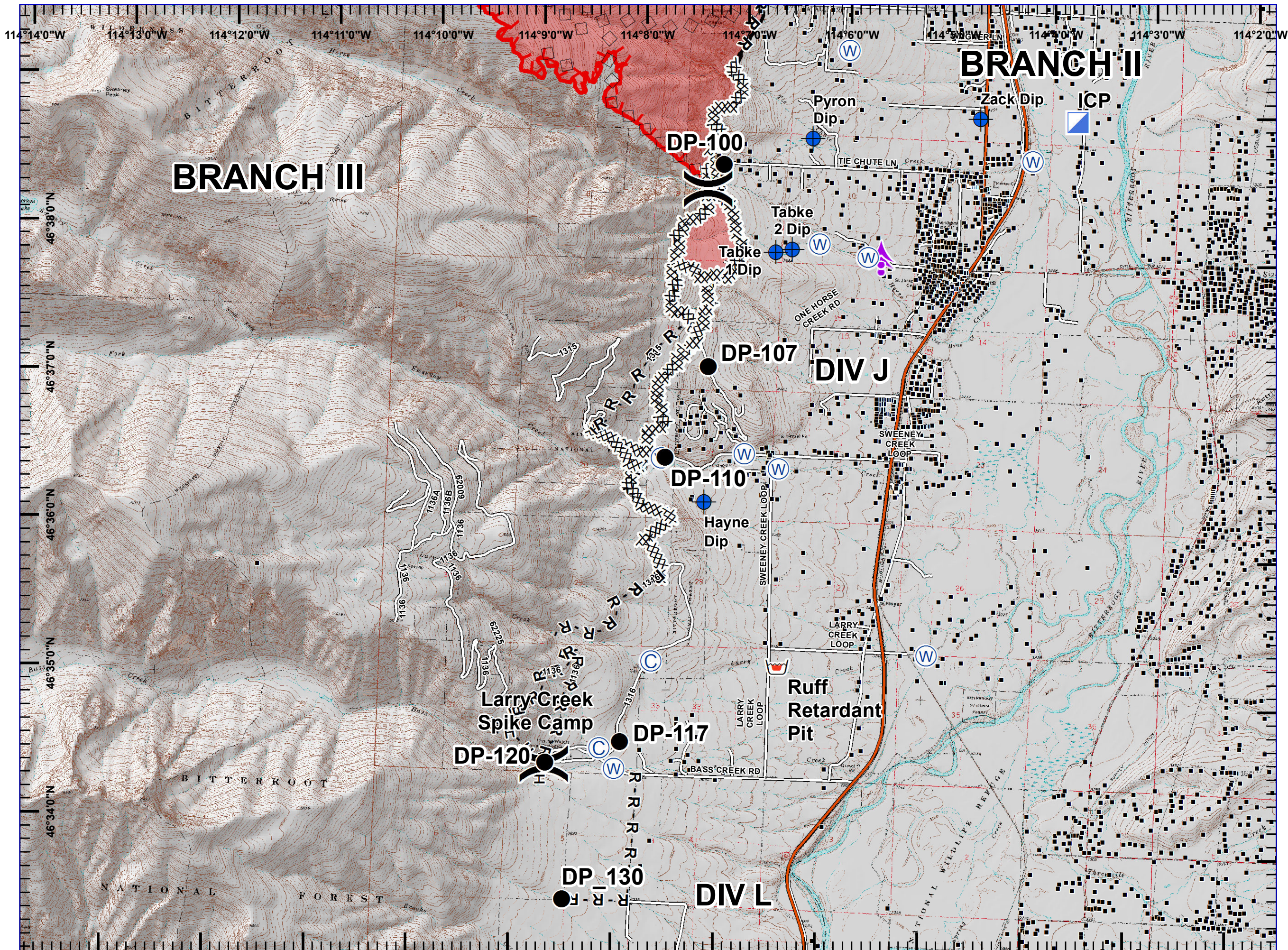
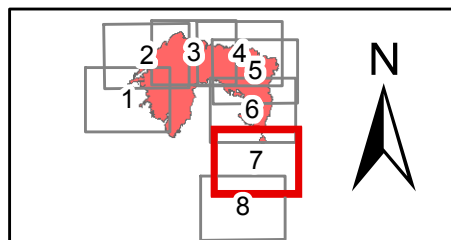
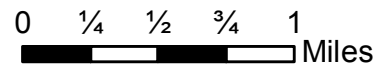
- Aerial Hazard
- Dip Site
- Drop Point
- Helispot
- ICP
- Repeater
- Staging Area
- Water Source
- Division Break
- Structures
- Completed Dozer Line
- H - H Completed Hand Line
- R - R Road as Completed Line
- Active Burnout
- Aerial Retardant Drop
- Interstate and Highways
- Roads
- Uncontrolled Fire Edge
- Completed Line
- State Boundary
- Wildfire Daily Fire Perimeter

0 1/4 1/2 3/4 1 Miles





- Aerial Hazard
- Camp
- Dip Site
- Drop Point
- ICP
- Retardant/Mud Pit
- Water Source
- Division Break
- Structures
- Completed Dozer Line
- Completed Hand Line
- Road as Completed Line
- Aerial Retardant Drop
- Interstate and Highways
- Roads
- Uncontrolled Fire Edge
- Completed Line
- State Boundary
- Wildfire Daily Fire Perimeter





- Camp
- Dip Site
- Drop Point
- Helibase
- Retardant/Mud Pit
- Water Source
- Division Break
- Branch Break
- Structures
- Completed Dozer Line
- Completed Hand Line
- Road as Completed Line
- Interstate and Highways
- Roads
- State Boundary

