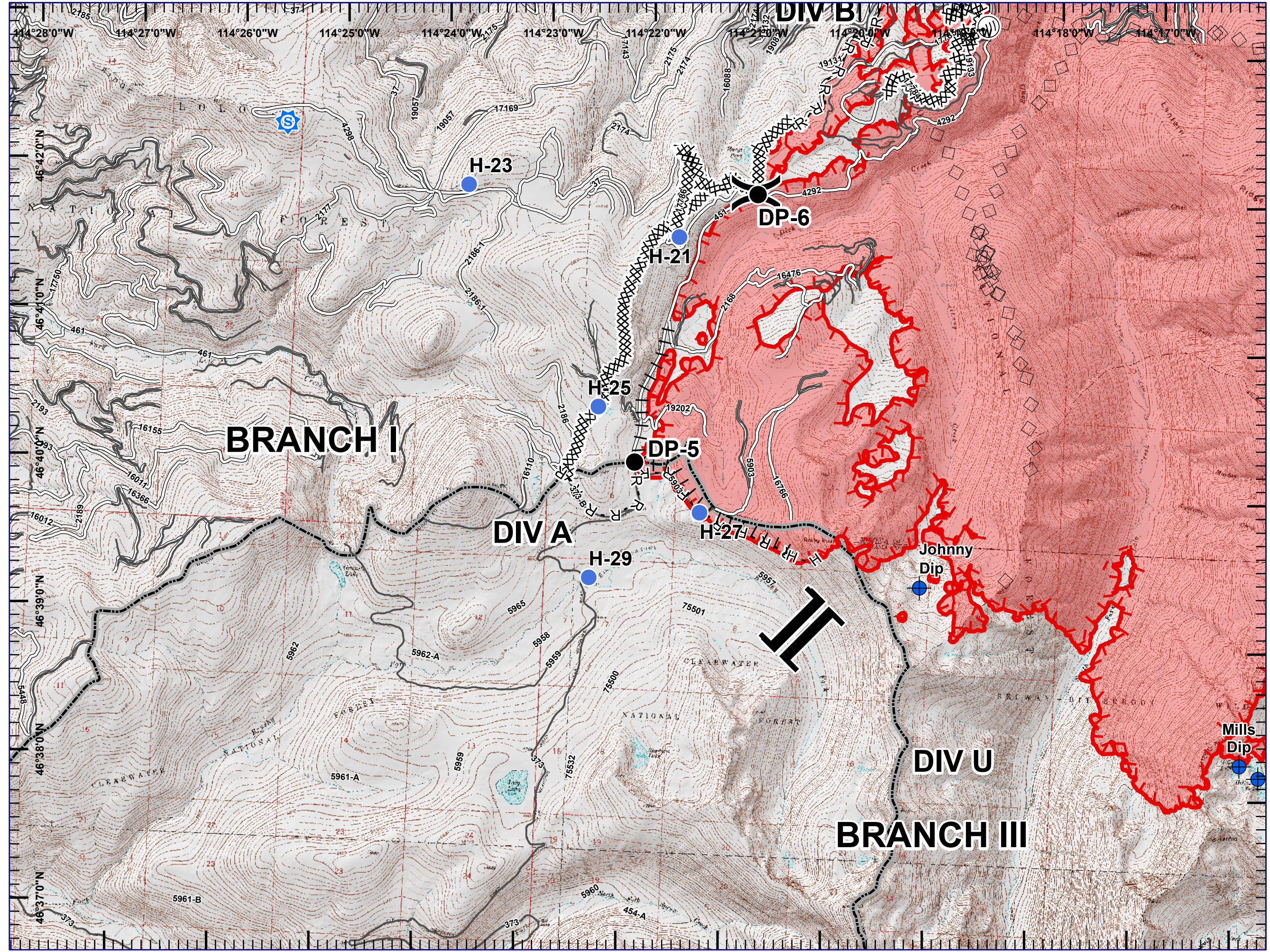
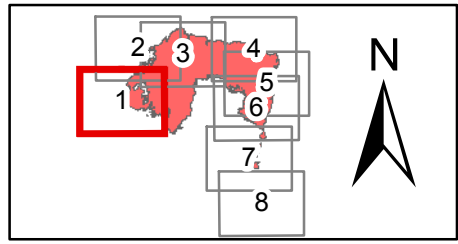
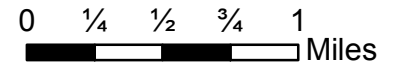


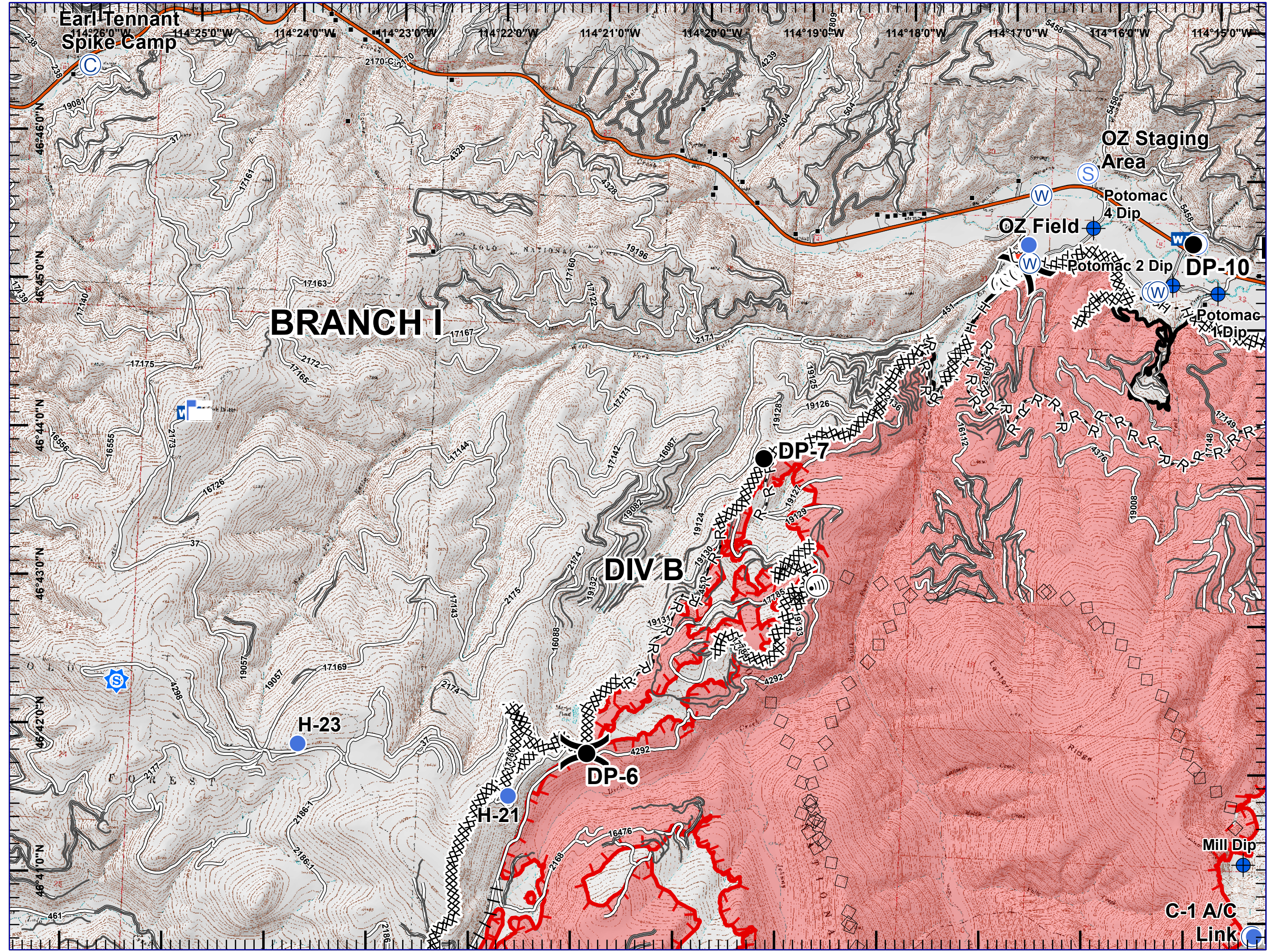
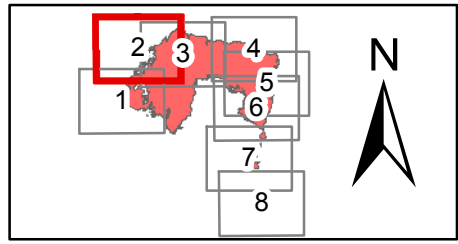
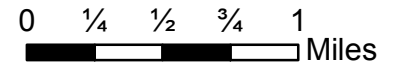


- Sheriff Repeater
- Dip Site
- Drop Point
- Helispot
- Internet Access
- Division Break
- Branch Break
- Completed Dozer Line
- Completed Hand Line
- Road as Completed Line
- Proposed Burnout
- Aerial Retardant Drop
- Roads
- Uncontrolled Fire Edge
- Completed Line
- State Boundary
- Wildfire Daily Fire Perimeter





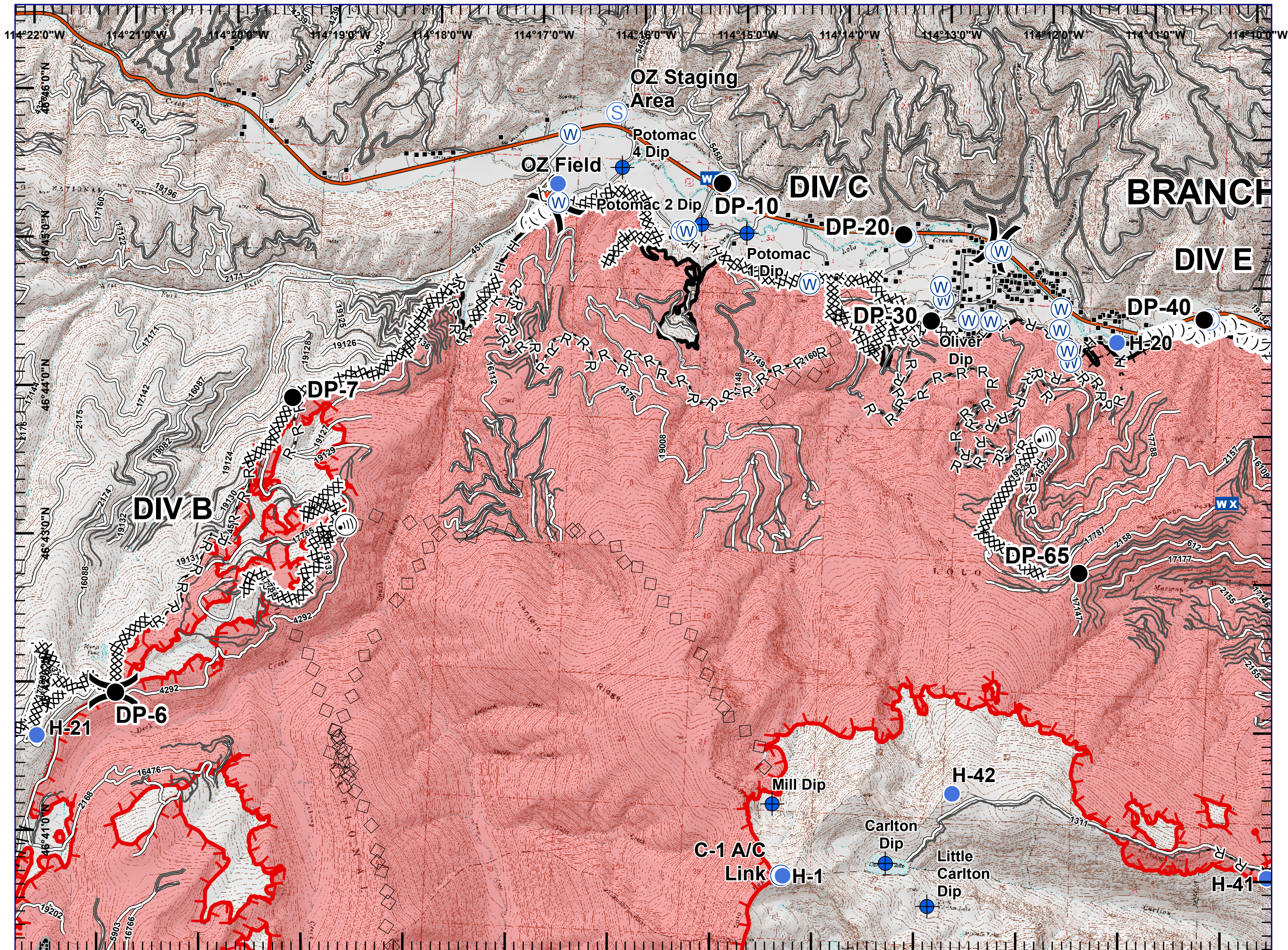
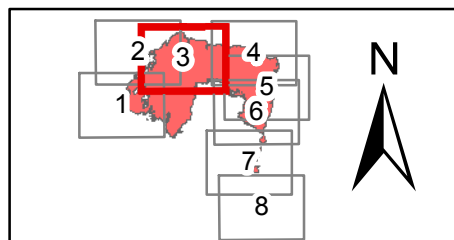
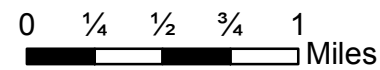
- Sheriff Repeater
- Camp
- Dip Site
- Drop Point
- Helispot
- Internet Access
- Lookout
- Mobile Weather Unit
- Repeater
- Retardant/Mud Pit
- Staging Area
- Water Source
- Division Break
- Structures
- Completed Dozer Line
- Completed Hand Line
- Road as Completed Line
- Proposed Burnout
- Aerial Retardant Drop
- Ridge/Geographic Feature
- Interstate and Highways
- Roads
- Uncontrolled Fire Edge
- Completed Line
- State Boundary
- Wildfire Daily Fire Perimeter



Lolo Peak Fire
 MT-LNF-001288
 IAP Map, Night Shift
 Page 3, Div C
 8/27/2017

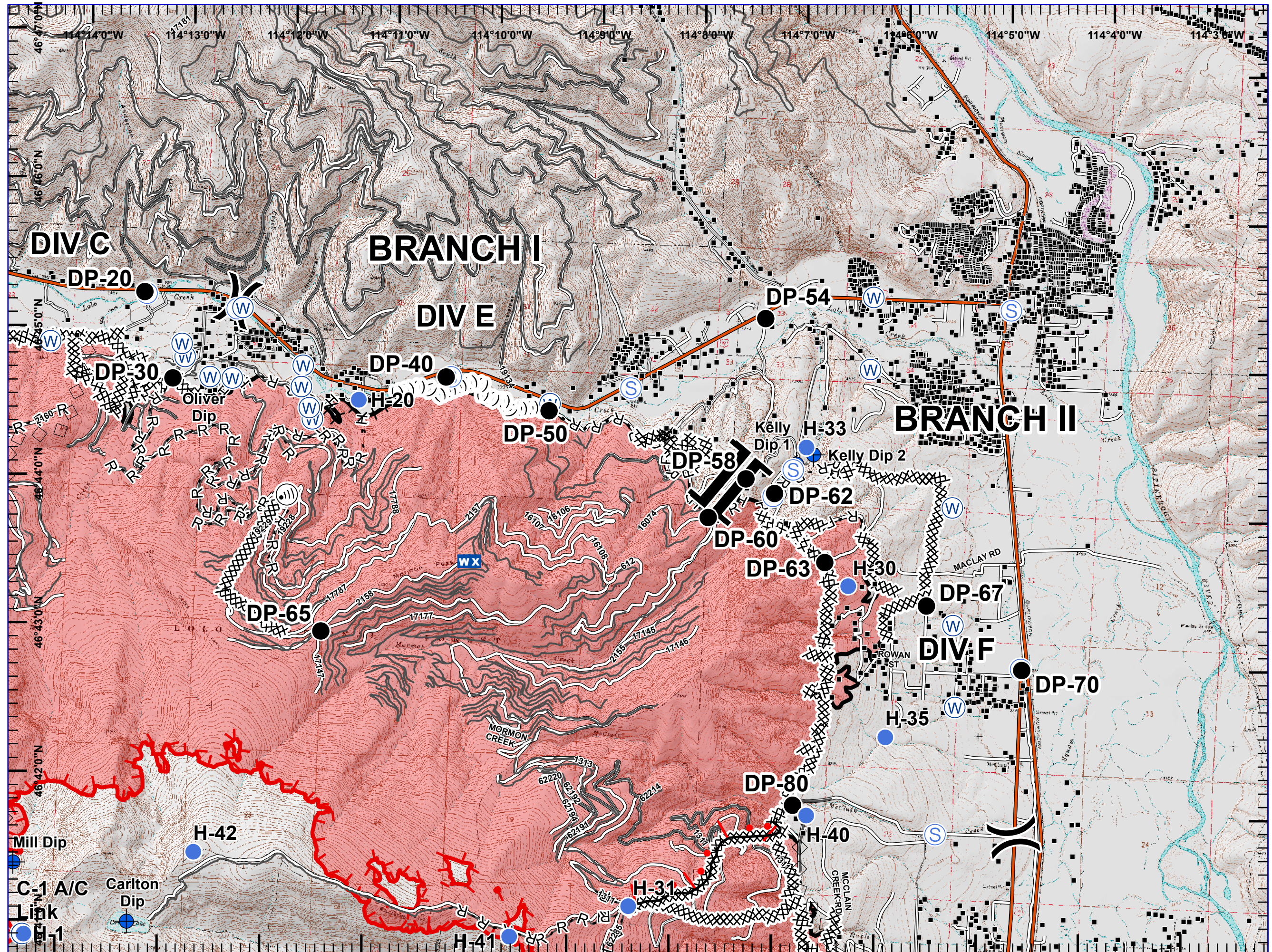
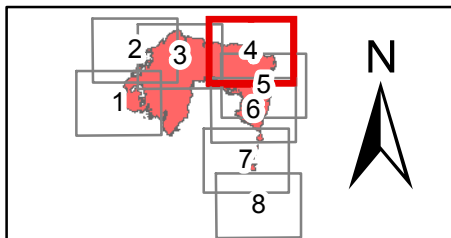
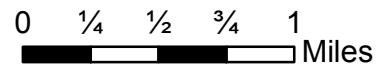


- Dip Site
- Drop Point
- Helispot
- Internet Access
- Mobile Weather Unit
- Repeater
- Retardant/Mud Pit
- Staging Area
- Water Source
- Division Break
- Structures
- Completed Dozer Line
- Completed Hand Line
- Road as Completed Line
- Proposed Burnout
- Aerial Retardant Drop
- Ridge/Geographic Feature
- Interstate and Highways
- Roads
- Uncontrolled Fire Edge
- Completed Line
- State Boundary
- Wildfire Daily Fire Perimeter





- + Dip Site
- Drop Point
- Helispot
- I Internet Access
- WX Mobile Weather Unit
- R Repeater
- S Staging Area
- W Water Source
-) Division Break
- | Branch Break
- Structures
- Completed Dozer Line
- H - H Completed Hand Line
- R - R Road as Completed Line
- Proposed Burnout
- └ Active Burnout
- Aerial Retardant Drop
- Ridge/Geographic Feature
- Interstate and Highways
- Roads
- Uncontrolled Fire Edge
- Completed Line
- State Boundary
- Wildfire Daily Fire Perimeter



Lolo Peak Fire

MT-LNF-001288

IAP Map, Night Shift

Page 5, Div F

8/27/2017



Greg Poscin's National Incident Management Team
Aerial Hazard

- Dip Site
- Drop Point
- Helispot
- ICP
- Internet Access
- Mobile Weather Unit
- Staging Area
- Water Source
- Division Break
- Branch Break
- Structures
- Completed Dozer Line
- H - H Completed Hand Line
- R - R Road as Completed Line
- Proposed Burnout
- Active Burnout

- Aerial Retardant Drop
- Air Tanker Retardant

() Ridge/Geographic Feature

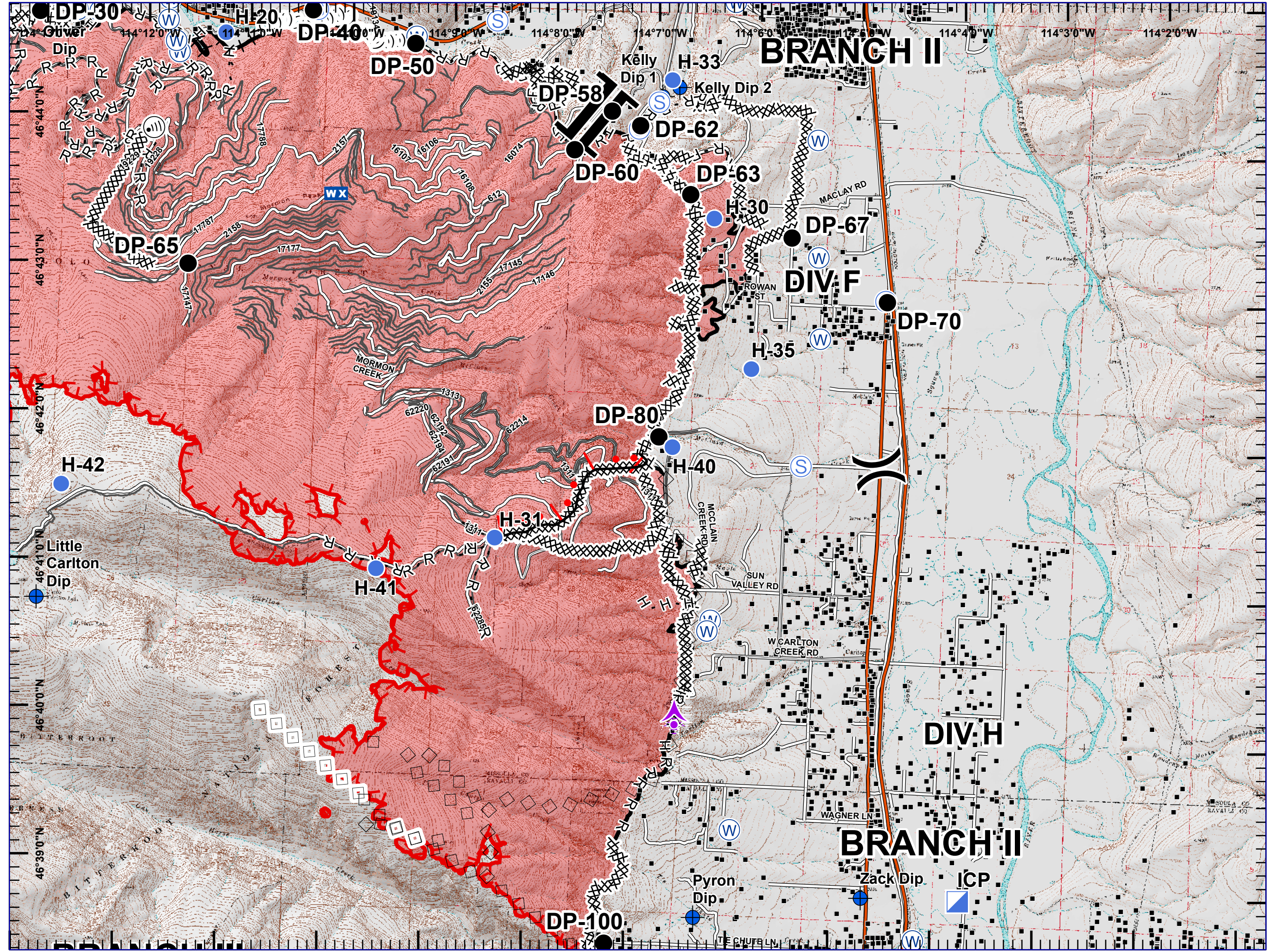
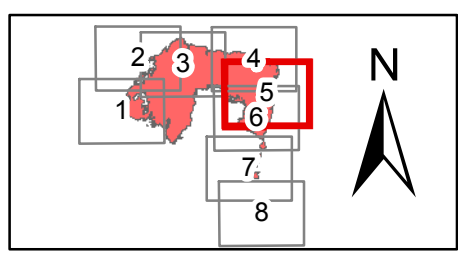
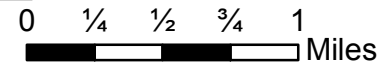
- Interstate and Highways
- Roads

Uncontrolled Fire Edge

Completed Line

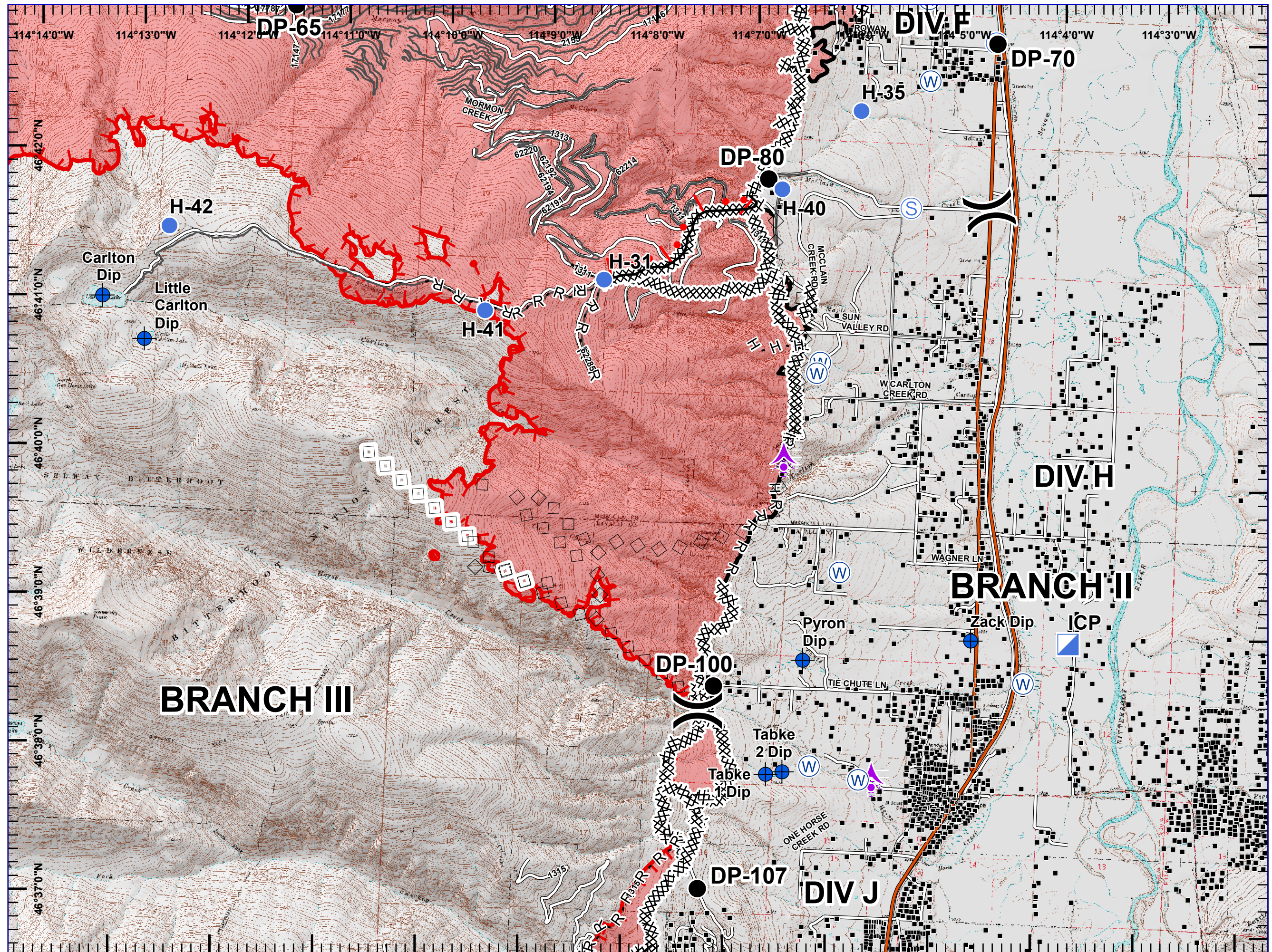
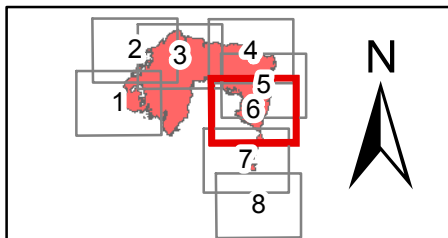
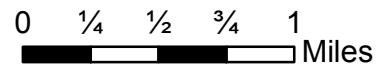
State Boundary

Wildfire Daily Fire Perimeter





- Aerial Hazard
- Dip Site
- Drop Point
- Helispot
- ICP
- Staging Area
- Water Source
- Division Break
- Structures
- Completed Dozer Line
- Completed Hand Line
- Road as Completed Line
- Active Burnout
- Aerial Retardant Drop
- Air Tanker Retardant
- Interstate and Highways
- Roads
- Uncontrolled Fire Edge
- Completed Line
- State Boundary
- Wildfire Daily Fire Perimeter



Lolo Peak Fire

MT-LNF-001288

IAP Map, Night Shift

Page 7, Div J

8/27/2017



- Aerial Hazard
- Camp
- Dip Site
- Drop Point
- Unimproved Landing Area
- ICP
- Retardant/Mud Pit
- Water Source
- Division Break
- Structures
- Completed Dozer Line
- Completed Hand Line
- Road as Completed Line
- Proposed Burnout
- Aerial Retardant Drop
- Air Tanker Retardant
- Interstate and Highways
- Roads
- Uncontrolled Fire Edge
- Completed Line
- State Boundary
- Wildfire Daily Fire Perimeter

