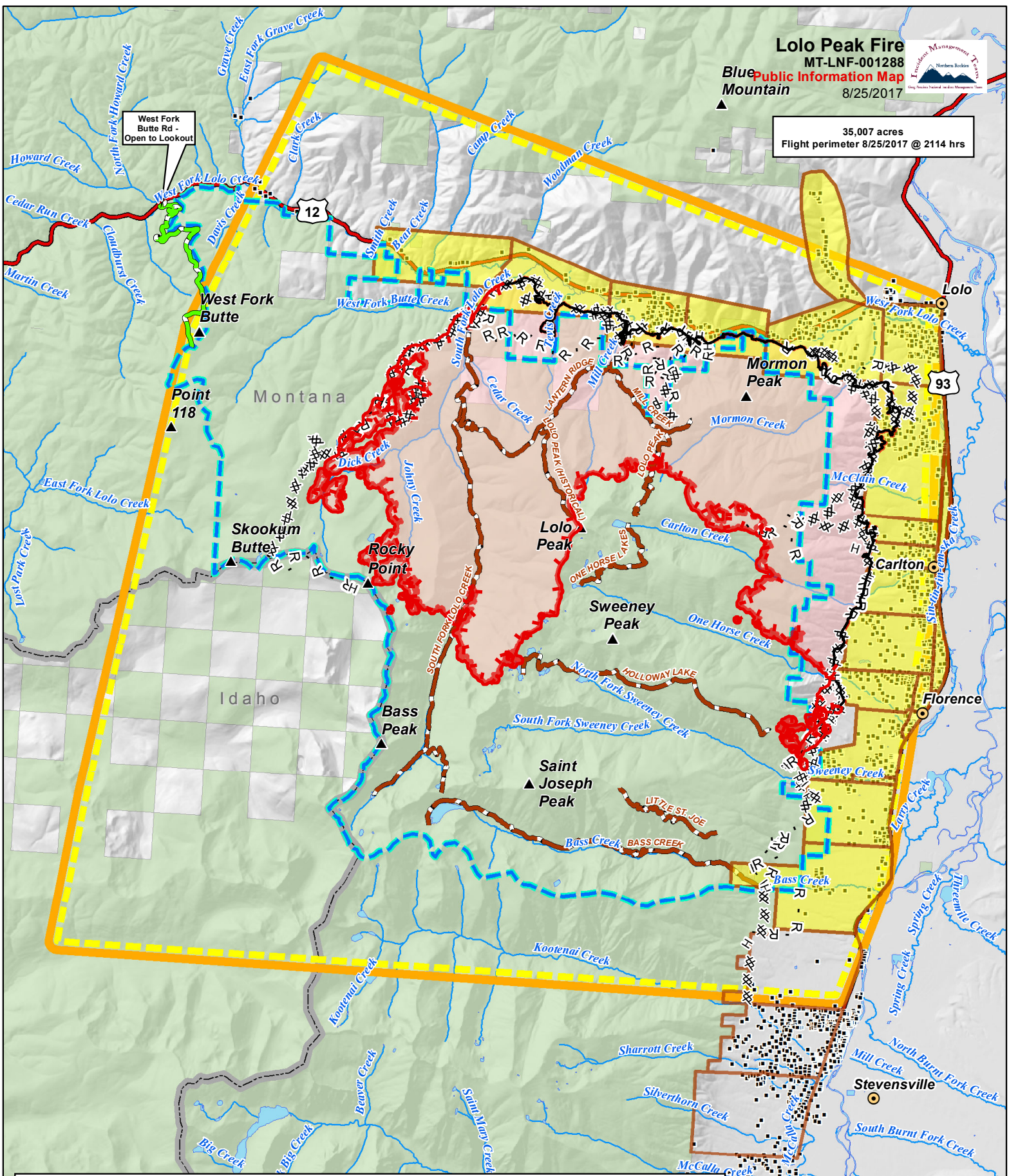




35,007 acres
 Flight perimeter 8/25/2017 @ 2114 hrs

West Fork Butte Rd - Open to Lookout



| | | | | | |
|-------|------------------------|--------------------------------------|-------------------------|----------------|---|
| XX XX | Completed Dozer Line | West Fork Butte Rd - Open to Lookout | Evacuation Areas | | Temporary Flight Restriction - Includes Unmanned Aerial Vehicles (Drones) |
| H - | Completed Hand Line | Uncontrolled Fire Edge | | | Fire Perimeter |
| R - | Road as Completed Line | Closure Area | Evacuation Warning | Trail Closures | Forest Service |
| - - | Planned Fire Line | Evacuation Zones | Type | Structures | |
| | | | Evacuation Warning | | |
| | | | Trail Closures | | |
| | | | Structures | | |

