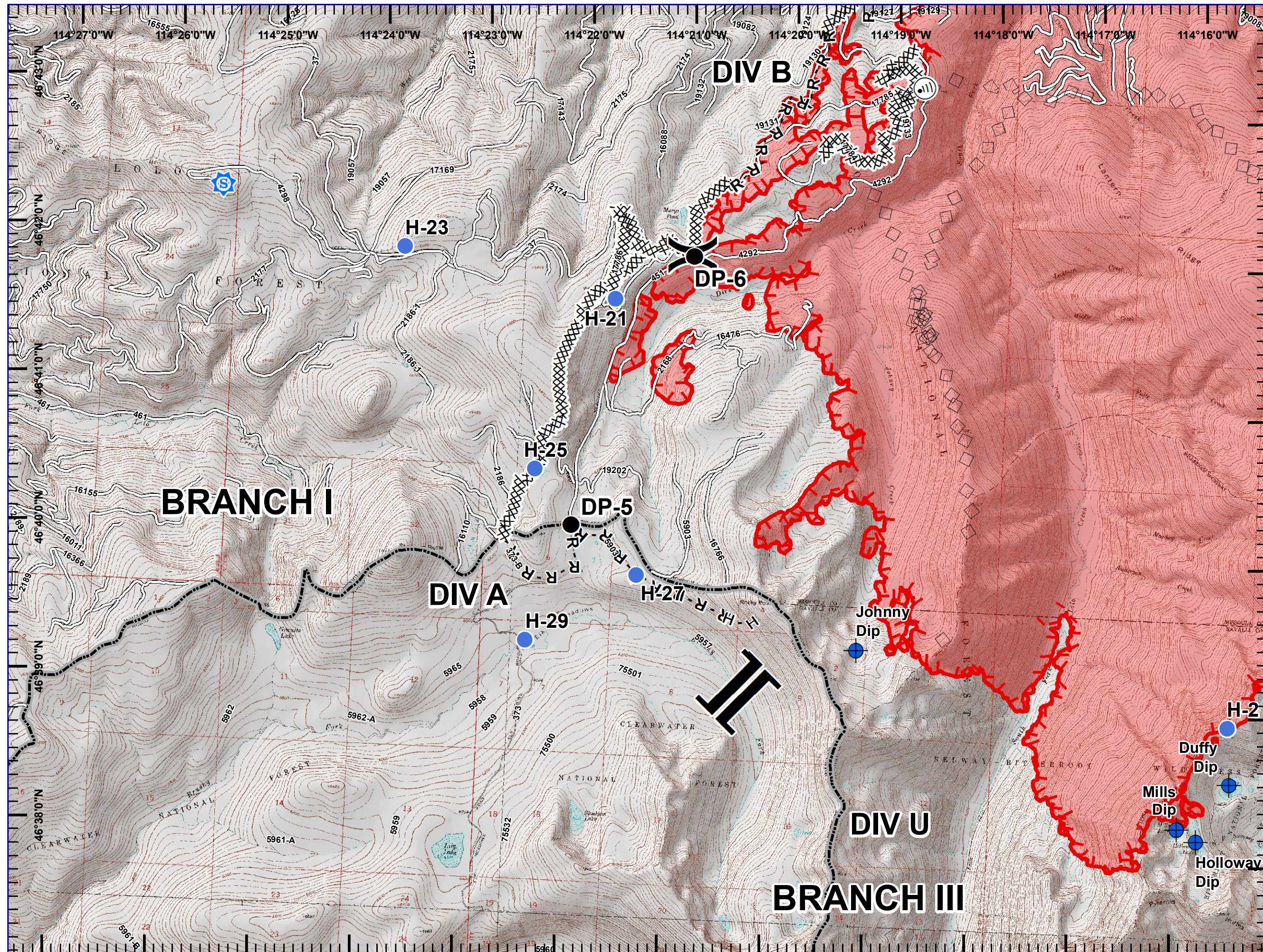
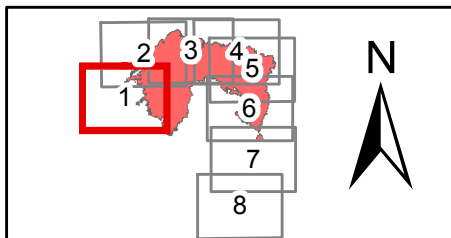




- Sheriff Repeater
- Dip Site
- Drop Point
- Helispot
- Internet Access
- Division Break
- Branch Break
- Completed Dozer Line
- Completed Hand Line
- Road as Completed Line
- Aerial Retardant Drop
- Roads
- Uncontrolled Fire Edge
- State Boundary
- Wildfire Daily Fire Perimeter

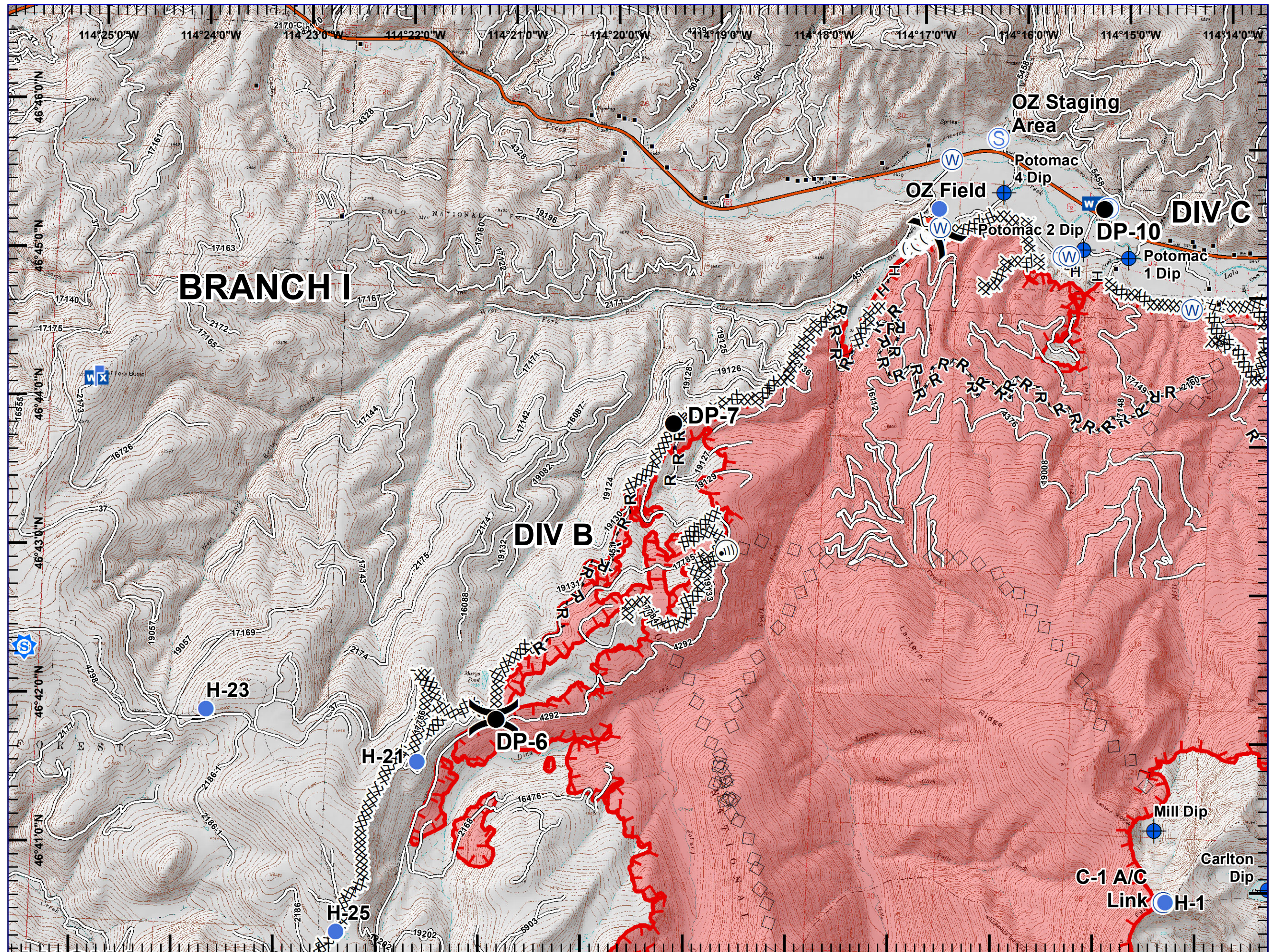
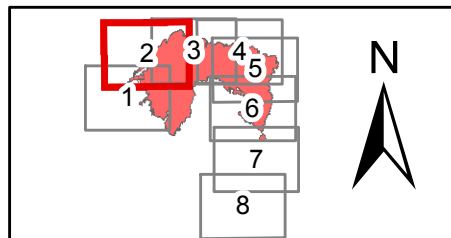
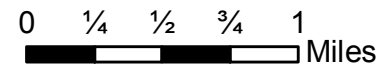
0 1/4 1/2 3/4 1 Miles







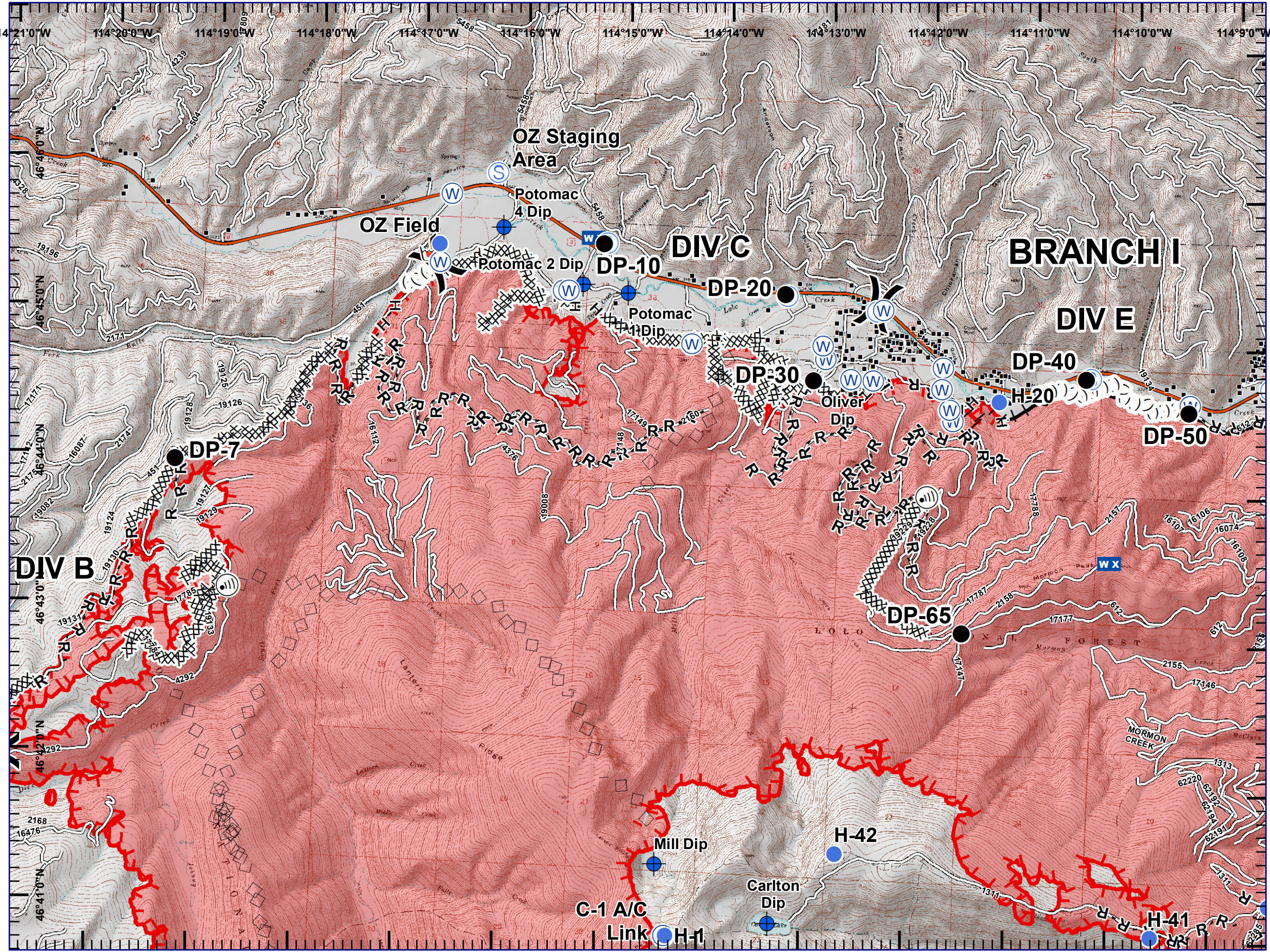
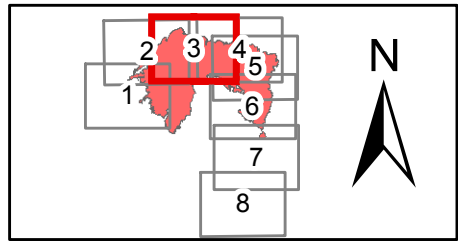
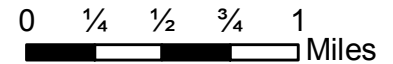
- Sheriff Repeater
- Dip Site
- Drop Point
- Helispot
- Internet Access
- Lookout
- Mobile Weather Unit
- Repeater
- Retardant/Mud Pit
- Staging Area
- Water Source
- Division Break
- Structures
- Completed Dozer Line
- Completed Hand Line
- Road as Completed Line
- Aerial Retardant Drop
- Ridge/Geographic Feature
- Interstate and Highways
- Roads
- Uncontrolled Fire Edge
- State Boundary
- Wildfire Daily Fire Perimeter







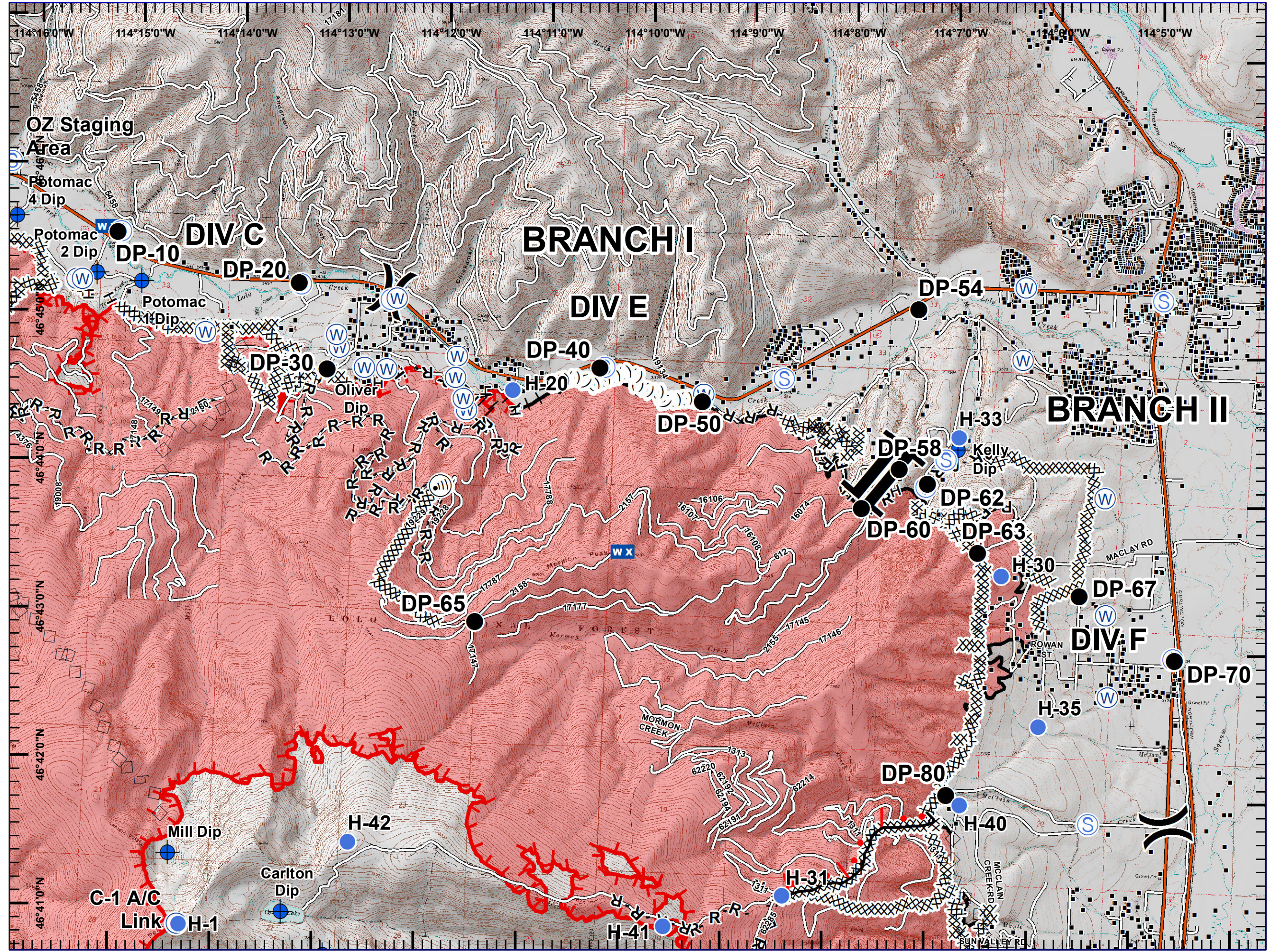
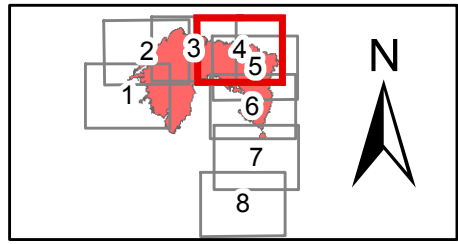
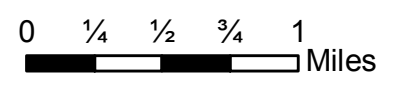
- + Dip Site
- Drop Point
- Helispot
- Ⓜ Internet Access
- WX Mobile Weather Unit
- Ⓜ Repeater
- ☒ Retardant/Mud Pit
- S Staging Area
- W Water Source
- ) Division Break
- Structures
- XXXX Completed Dozer Line
- H-H Completed Hand Line
- R-R Road as Completed Line
- | | | Proposed Burnout
- ◇ Aerial Retardant Drop
- ( ( ( Ridge/Geographic Feature
- Interstate and Highways
- Roads
- ┌ Uncontrolled Fire Edge
- Completed Line
- ▭ State Boundary
- Wildfire Daily Fire Perimeter







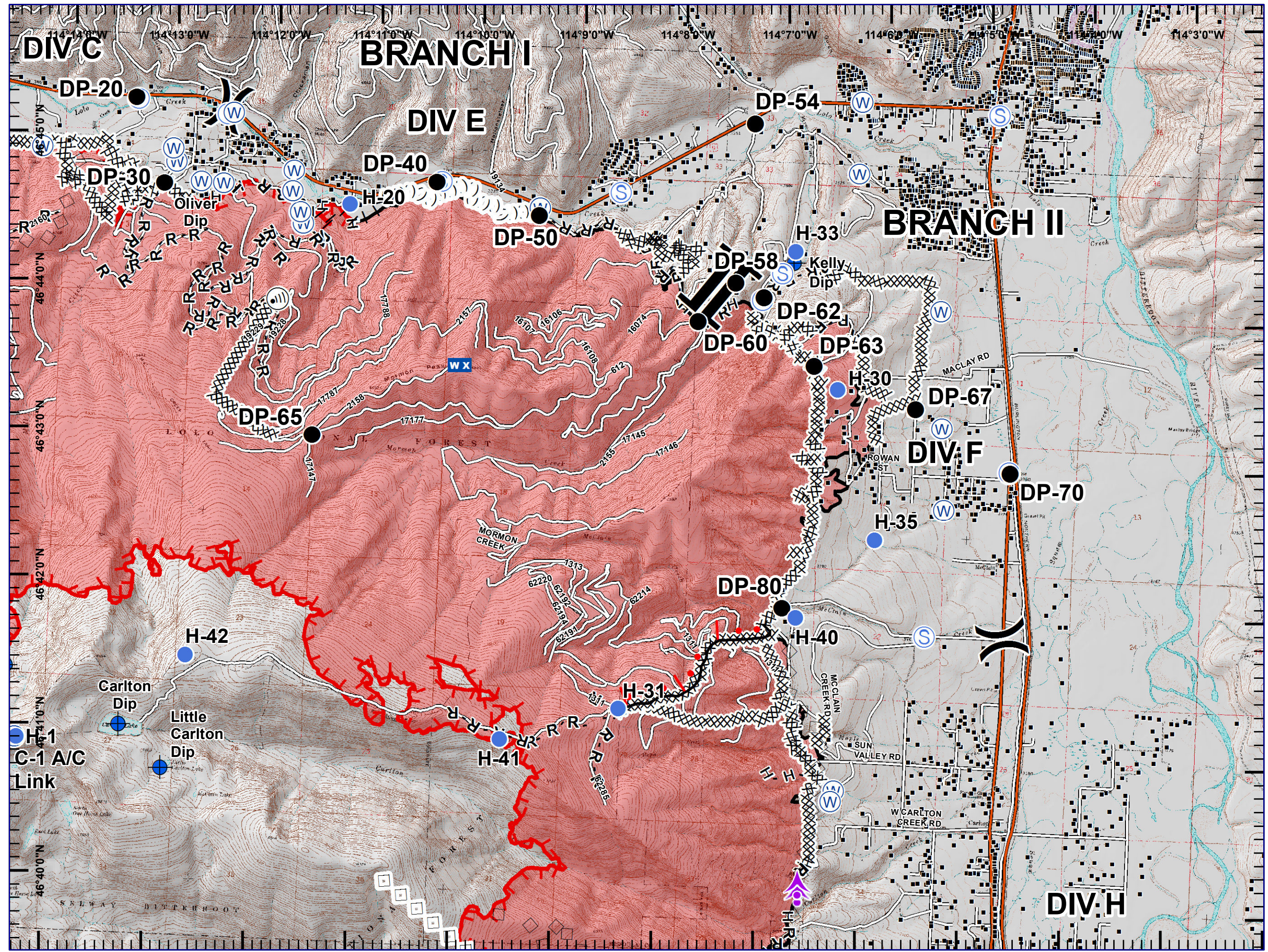
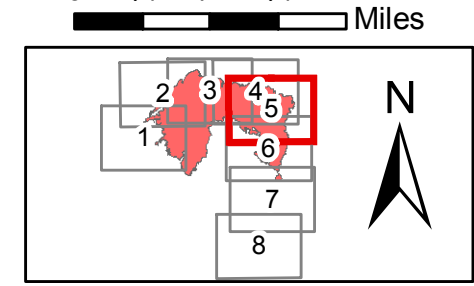
- Dip Site
- Drop Point
- Helispot
- Internet Access
- WX Mobile Weather Unit
- R Repeater
- S Staging Area
- W Water Source
- ) Division Break
- ] Branch Break
- Structures
- XXXXX Completed Dozer Line
- H - H Completed Hand Line
- R - R Road as Completed Line
- || Proposed Burnout
- └─● Active Burnout
- ◇ Aerial Retardant Drop
- ( ( ( Ridge/Geographic Feature
- Interstate and Highways
- Roads
- └─ Uncontrolled Fire Edge
- Completed Line
- ▭ State Boundary
- ▭ Wildfire Daily Fire Perimeter







- Aerial Hazard
- Dip Site
- Drop Point
- Helispot
- Internet Access
- Mobile Weather Unit
- Repeater
- Staging Area
- Water Source
- Division Break
- Branch Break
- Structures
- Completed Dozer Line
- H - H Completed Hand Line
- R - R Road as Completed Line
- Proposed Burnout
- Active Burnout
- Aerial Retardant Drop
- Air Tanker Retardant
- Ridge/Geographic Feature
- Interstate and Highways
- Roads
- Uncontrolled Fire Edge
- Completed Line
- State Boundary
- Wildfire Daily Fire Perimeter

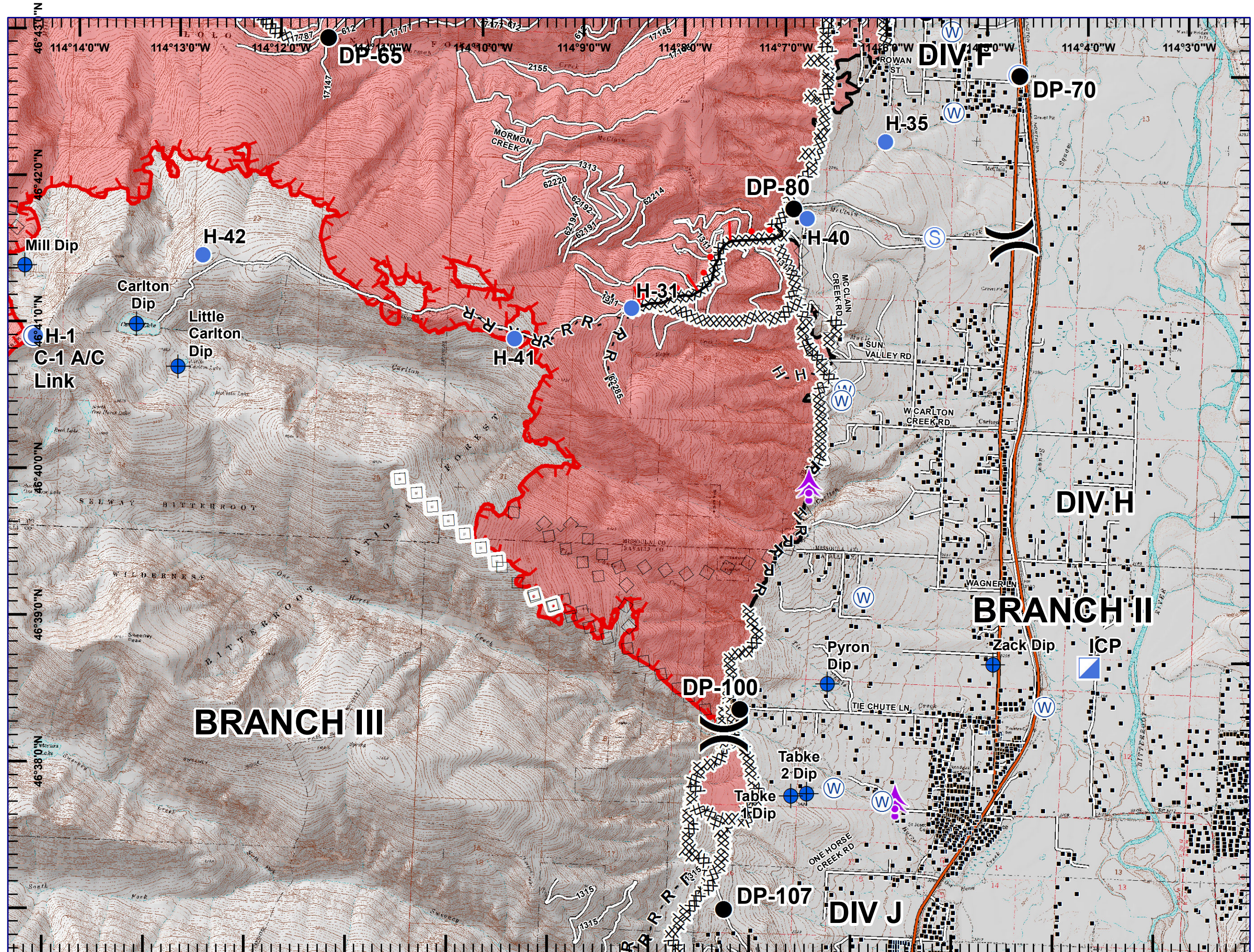
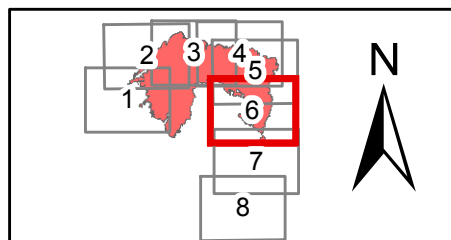






- Aerial Hazard
- Dip Site
- Drop Point
- Helispot
- ICP
- Repeater
- Staging Area
- Water Source
- Division Break
- Structures
- Completed Dozer Line
- Completed Hand Line
- Road as Completed Line
- Active Burnout
- Aerial Retardant Drop
- Air Tanker Retardant
- Interstate and Highways
- Roads
- Uncontrolled Fire Edge
- Completed Line
- State Boundary
- Wildfire Daily Fire Perimeter

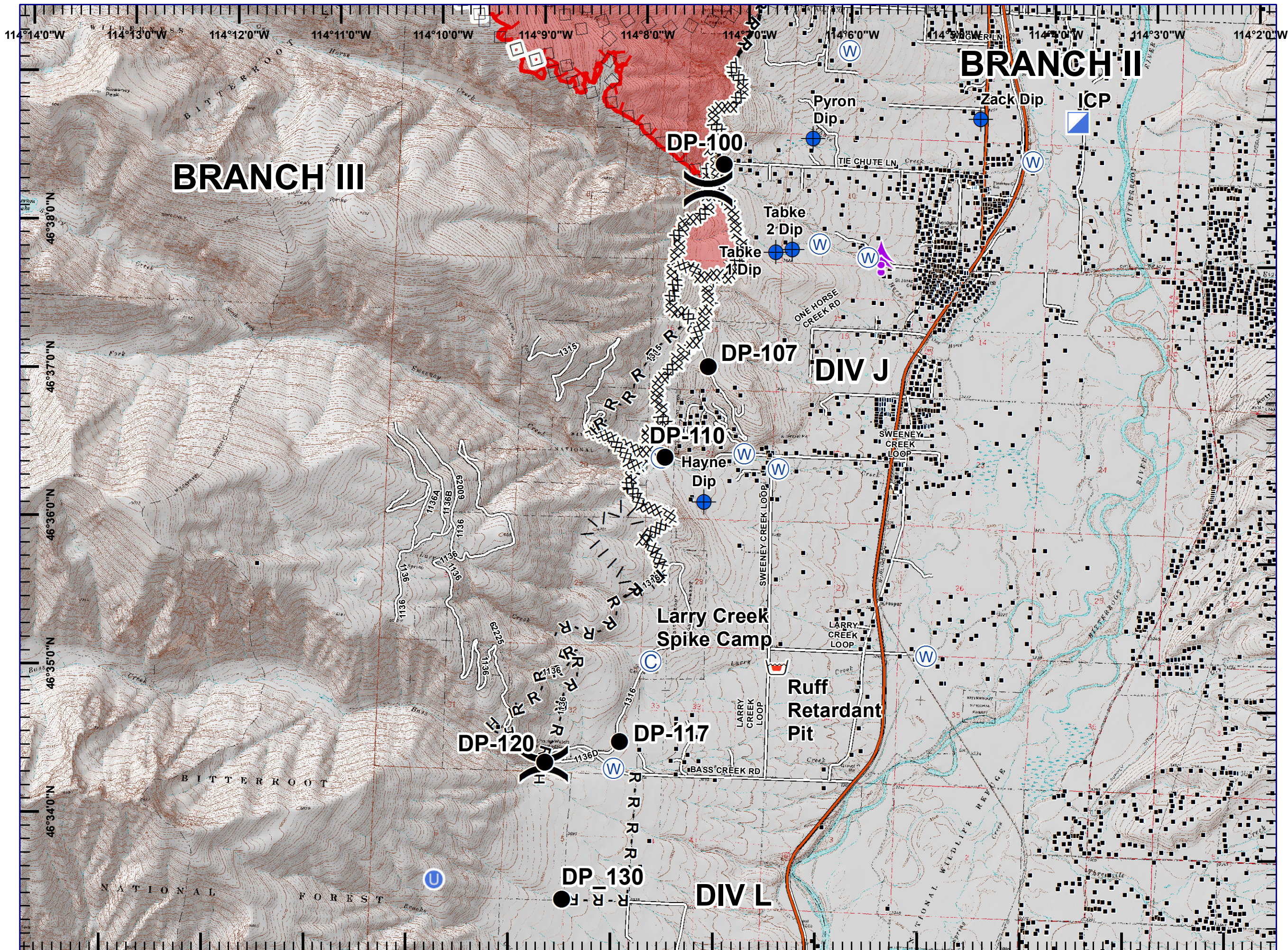
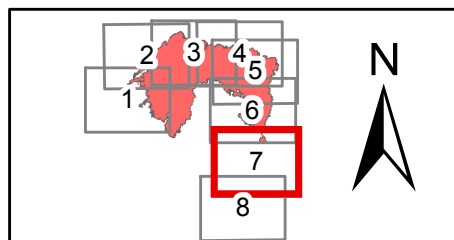
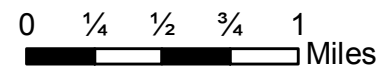
0 1/4 1/2 3/4 1 Miles







- Aerial Hazard
- Camp
- Dip Site
- Drop Point
- Unimproved Landing Area
- ICP
- Retardant/Mud Pit
- Water Source
- Division Break
- Structures
- Completed Dozer Line
- Completed Hand Line
- Road as Completed Line
- Proposed Burnout
- Aerial Retardant Drop
- Air Tanker Retardant
- Interstate and Highways
- Roads
- Uncontrolled Fire Edge
- Completed Line
- State Boundary
- Wildfire Daily Fire Perimeter





# Lolo Peak Fire

MT-LNF-001288

IAP Map, Day Shift

Page 8, Div L

8/26/2017



- Camp
- Dip Site
- Drop Point
- Helibase
- Unimproved Landing Area
- Retardant/Mud Pit
- Water Source
- Division Break
- Branch Break
- Structures
- Completed Dozer Line
- H - H Completed Hand Line
- R - R Road as Completed Line
- Proposed Burnout
- Interstate and Highways
- Roads
- State Boundary

