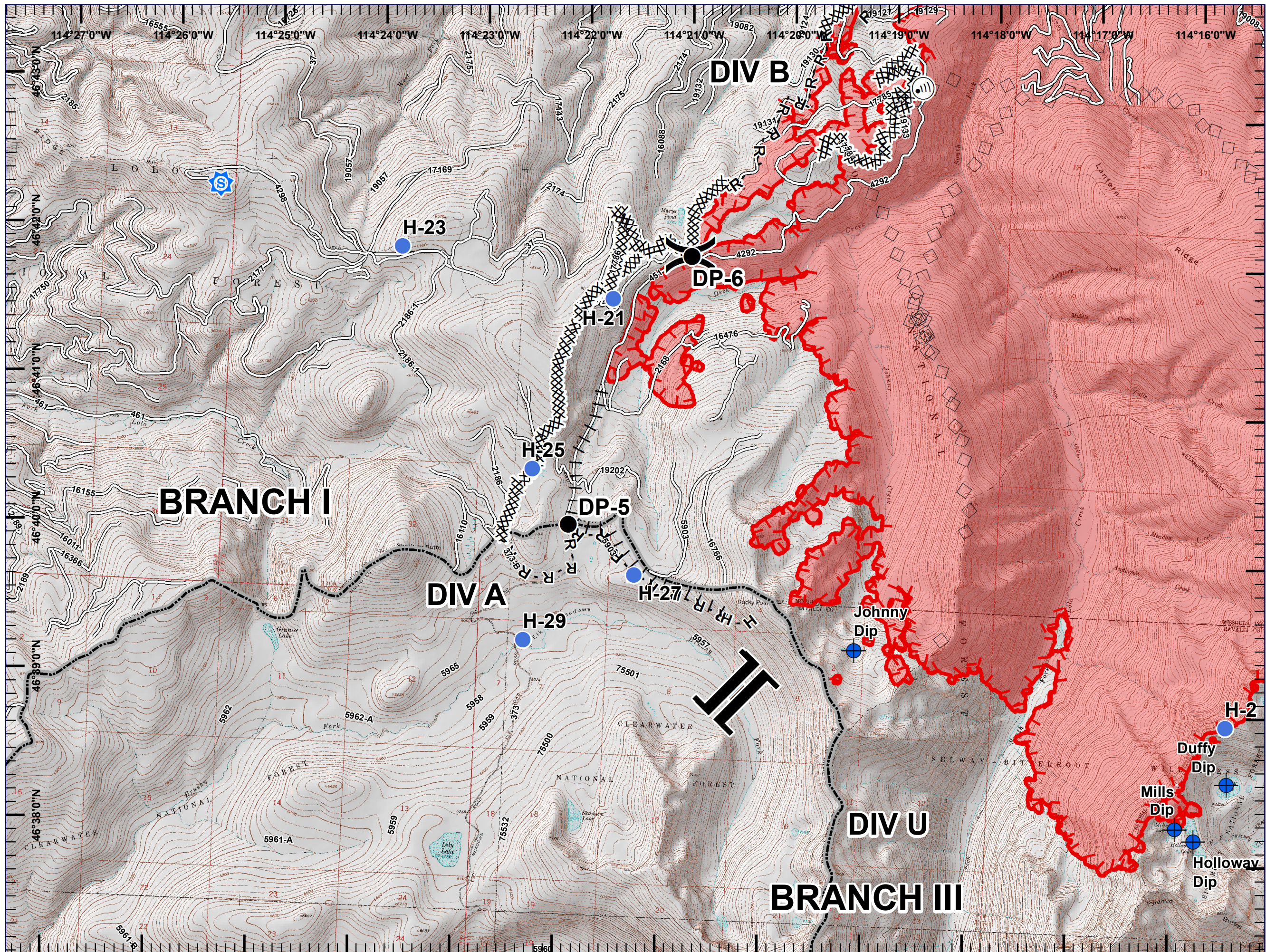
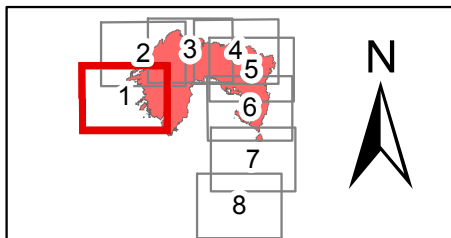




- Sheriff Repeater
- Dip Site
- Drop Point
- Helispot
- Internet Access
- Division Break
- Branch Break
- Completed Dozer Line
- Completed Hand Line
- Road as Completed Line
- Proposed Burnout
- Aerial Retardant Drop
- Roads
- Uncontrolled Fire Edge
- Completed Line
- State Boundary
- Wildfire Daily Fire Perimeter

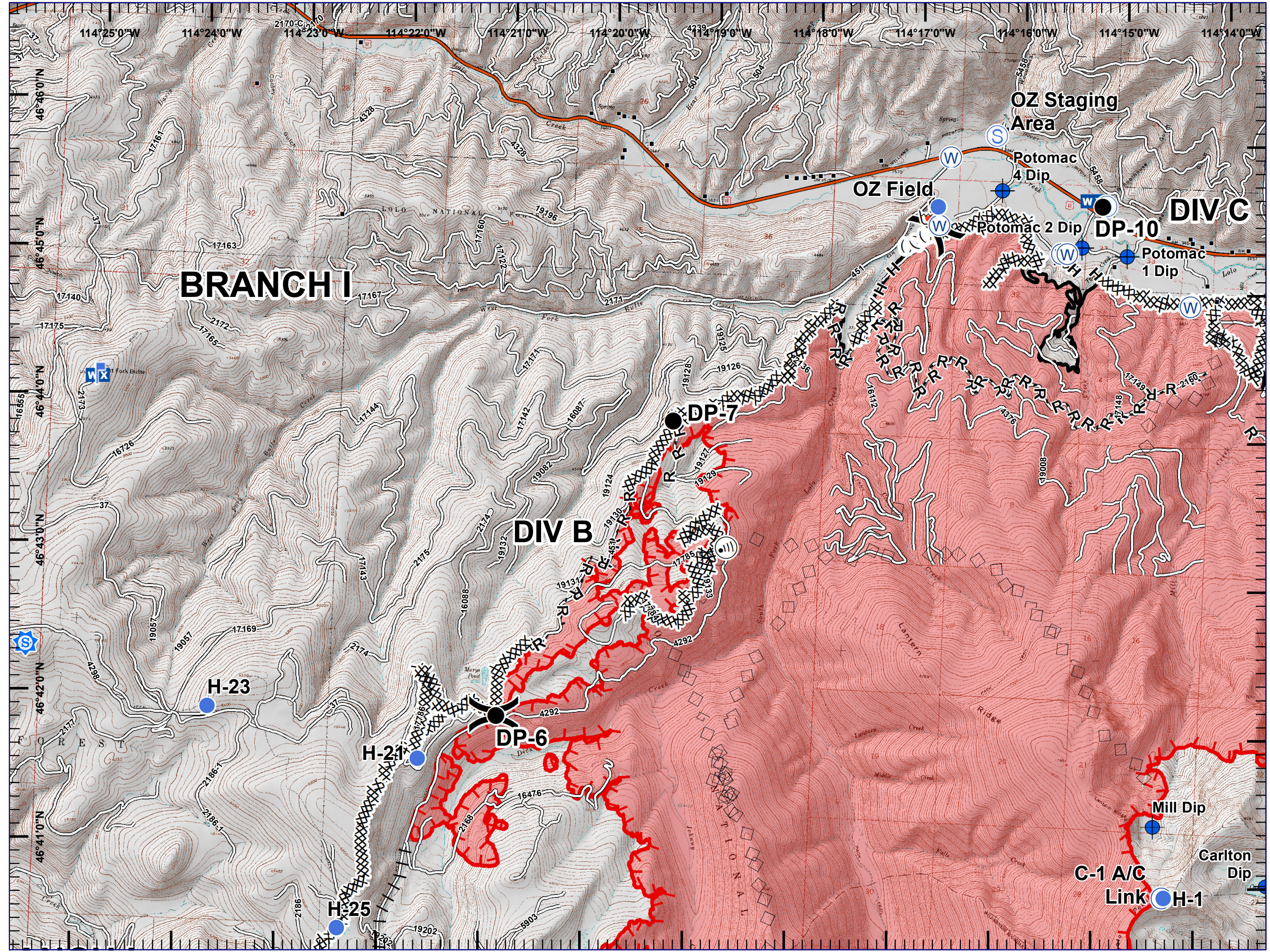
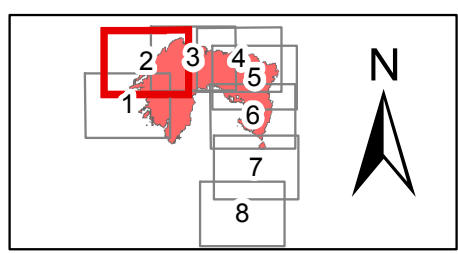
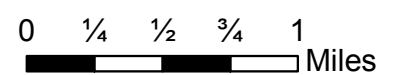
0 1/4 1/2 3/4 1 Miles



Lolo Peak Fire
 MT-LNF-001288
IAP Map, Day Shift
Page 2, Div B
 8/27/2017



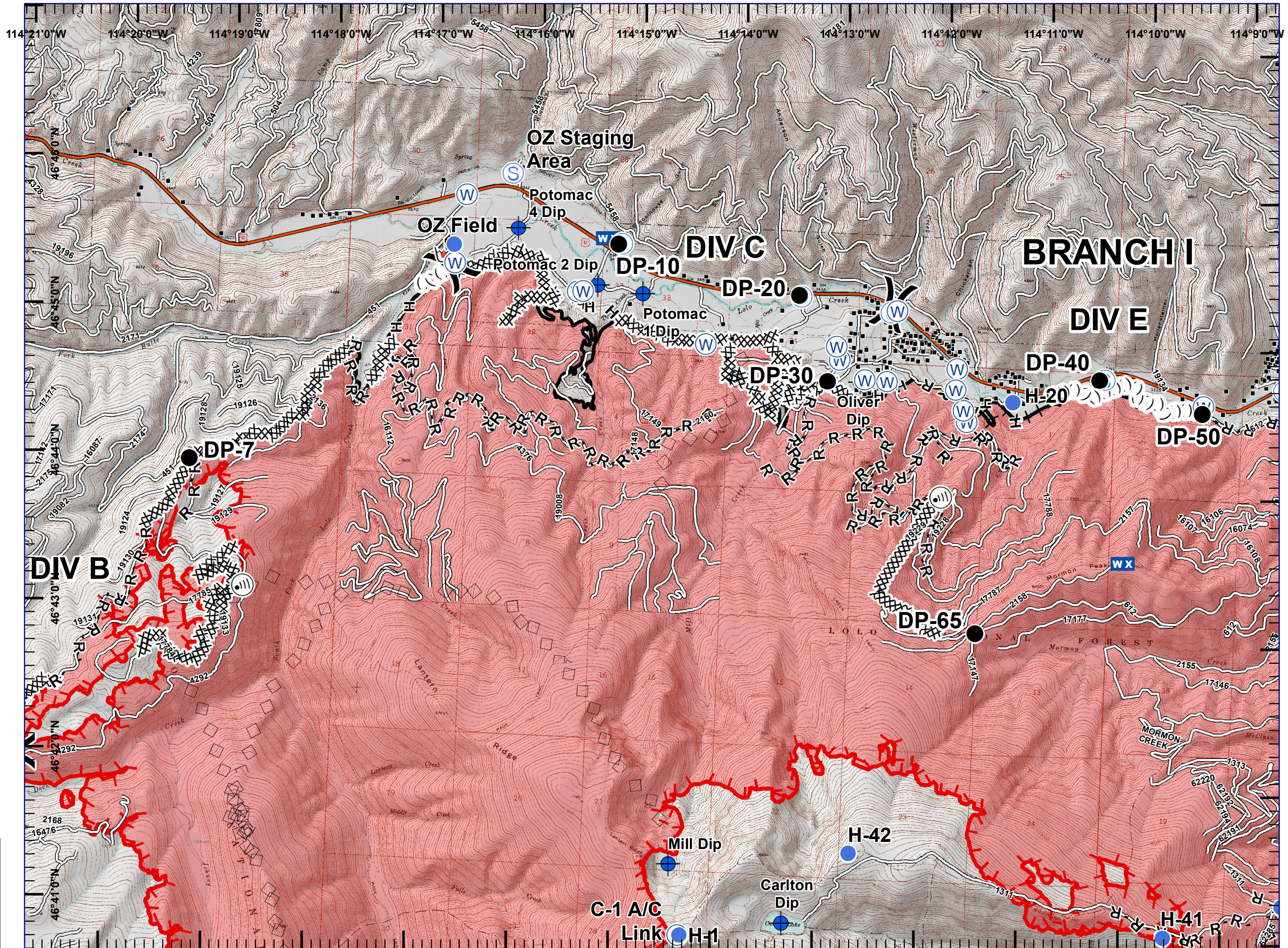
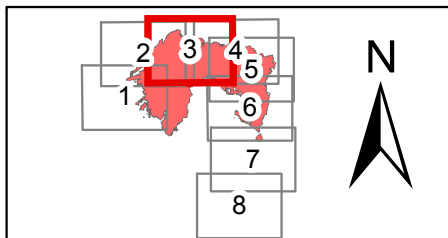
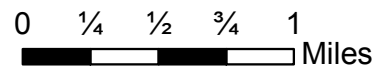
- Sheriff Repeater
- Dip Site
- Drop Point
- Helispot
- Internet Access
- Lookout
- Mobile Weather Unit
- Repeater
- Retardant/Mud Pit
- Staging Area
- Water Source
- Division Break
- Structures
- Completed Dozer Line
- Completed Hand Line
- Road as Completed Line
- Proposed Burnout
- Aerial Retardant Drop
- Ridge/Geographic Feature
- Interstate and Highways
- Roads
- Uncontrolled Fire Edge
- Completed Line
- State Boundary
- Wildfire Daily Fire Perimeter



Lolo Peak Fire
 MT-LNF-001288
 IAP Map, Day Shift
 Page 3, Div C
 8/27/2017

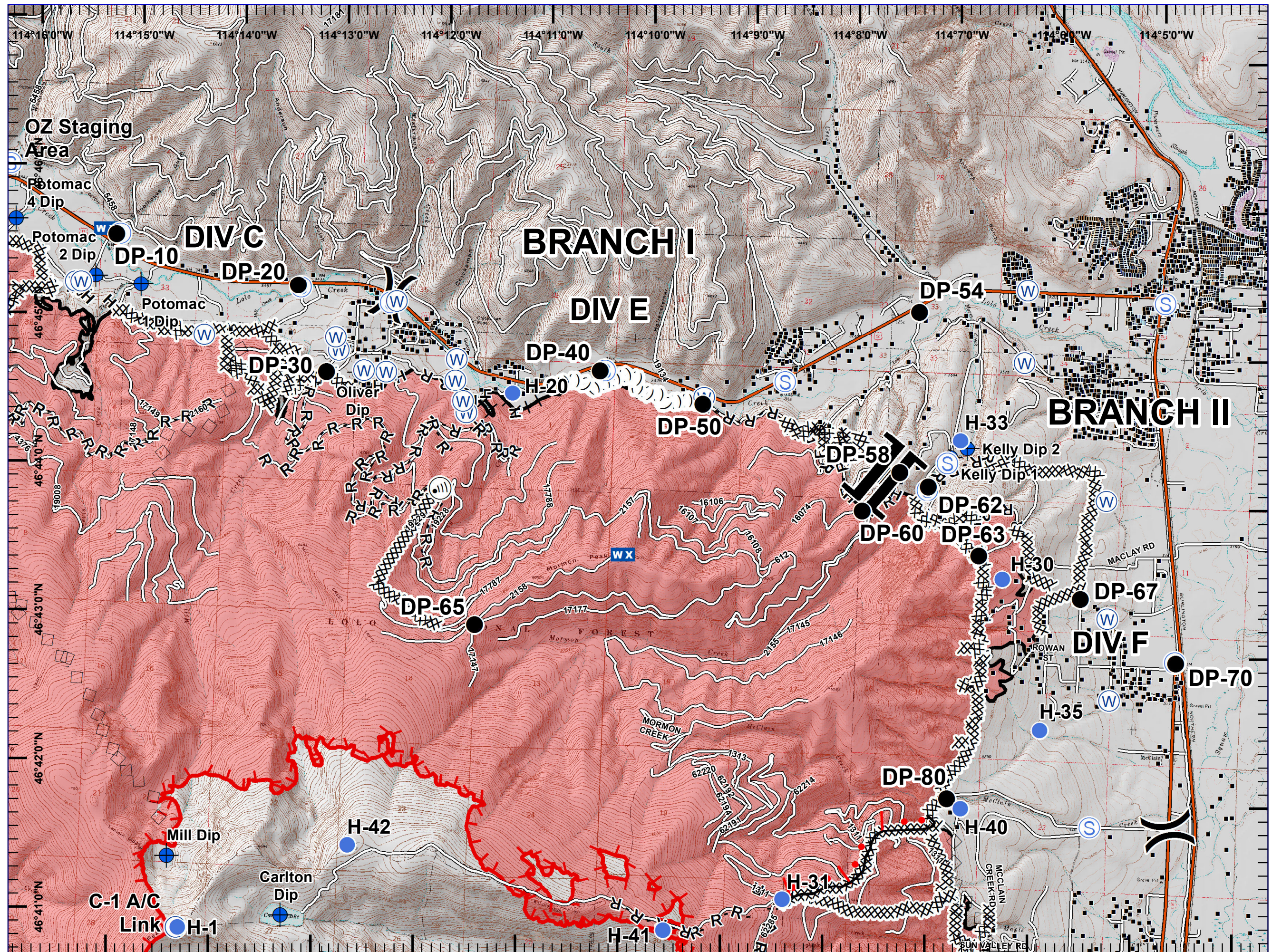
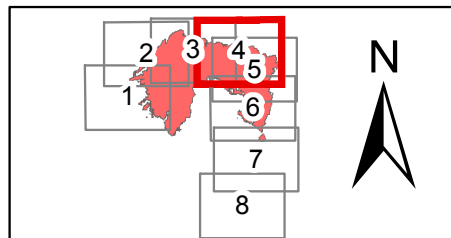
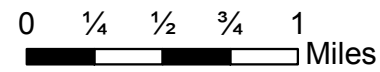


- Dip Site
- Drop Point
- Helispot
- Internet Access
- Mobile Weather Unit
- Repeater
- Retardant/Mud Pit
- Staging Area
- Water Source
- Division Break
- Structures
- Completed Dozer Line
- Completed Hand Line
- Road as Completed Line
- Proposed Burnout
- Aerial Retardant Drop
- Ridge/Geographic Feature
- Interstate and Highways
- Roads
- Uncontrolled Fire Edge
- Completed Line
- State Boundary
- Wildfire Daily Fire Perimeter





- Dip Site
- Drop Point
- Helispot
- Internet Access
- Mobile Weather Unit
- Repeater
- Staging Area
- Water Source
- Division Break
- Branch Break
- Structures
- Completed Dozer Line
- H - Completed Hand Line
- R - Road as Completed Line
- Proposed Burnout
- Active Burnout
- Aerial Retardant Drop
- Ridge/Geographic Feature
- Interstate and Highways
- Roads
- Uncontrolled Fire Edge
- Completed Line
- State Boundary
- Wildfire Daily Fire Perimeter

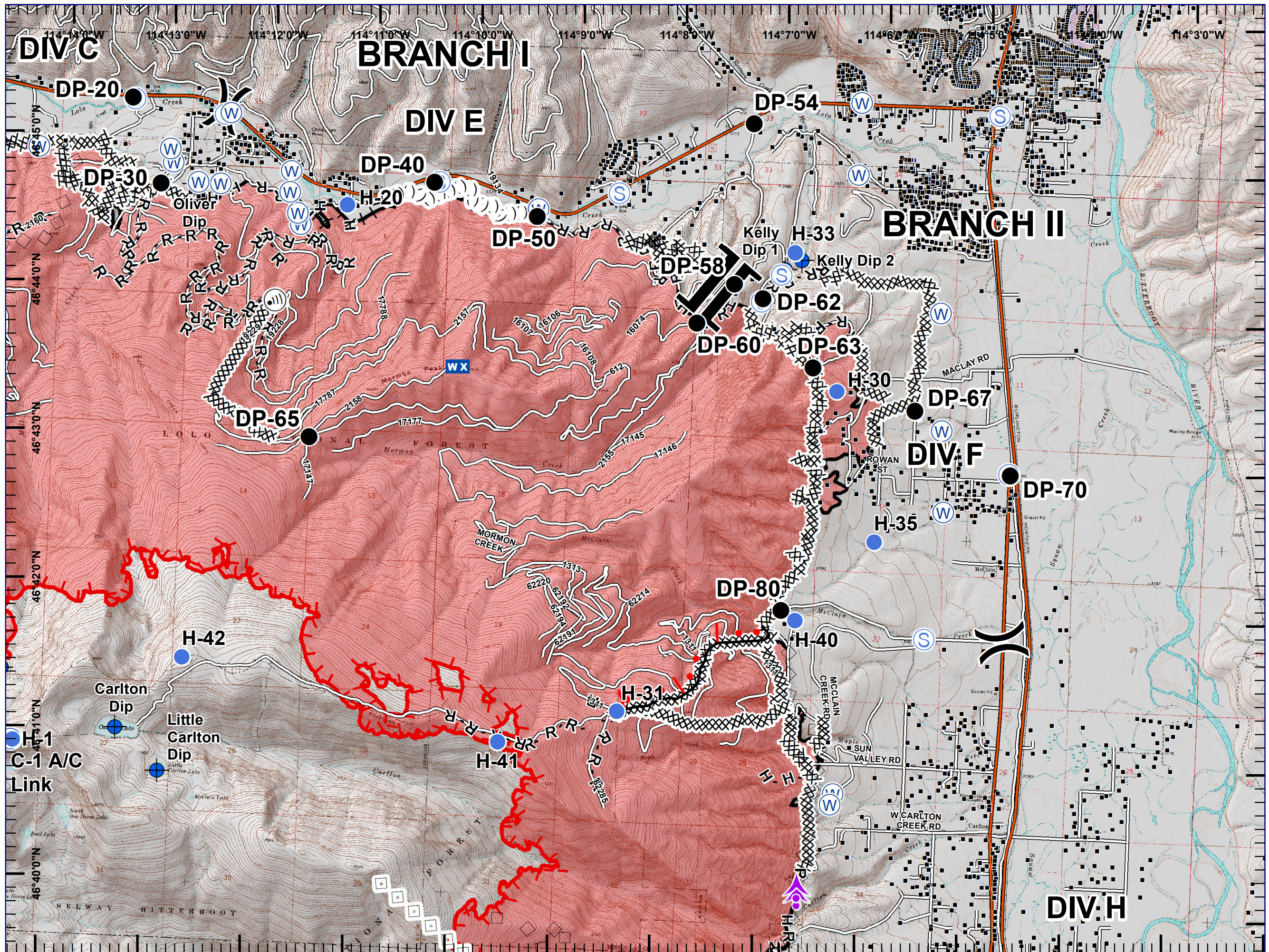
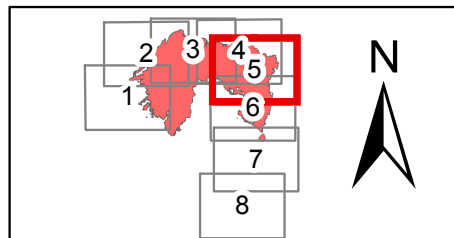
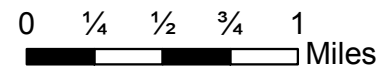


Lolo Peak Fire
 MT-LNF-001288
IAP Map, Day Shift
Page 5, Div F
 8/27/2017



Greg Poscin's National Incident Management Team
 Aerial Hazard

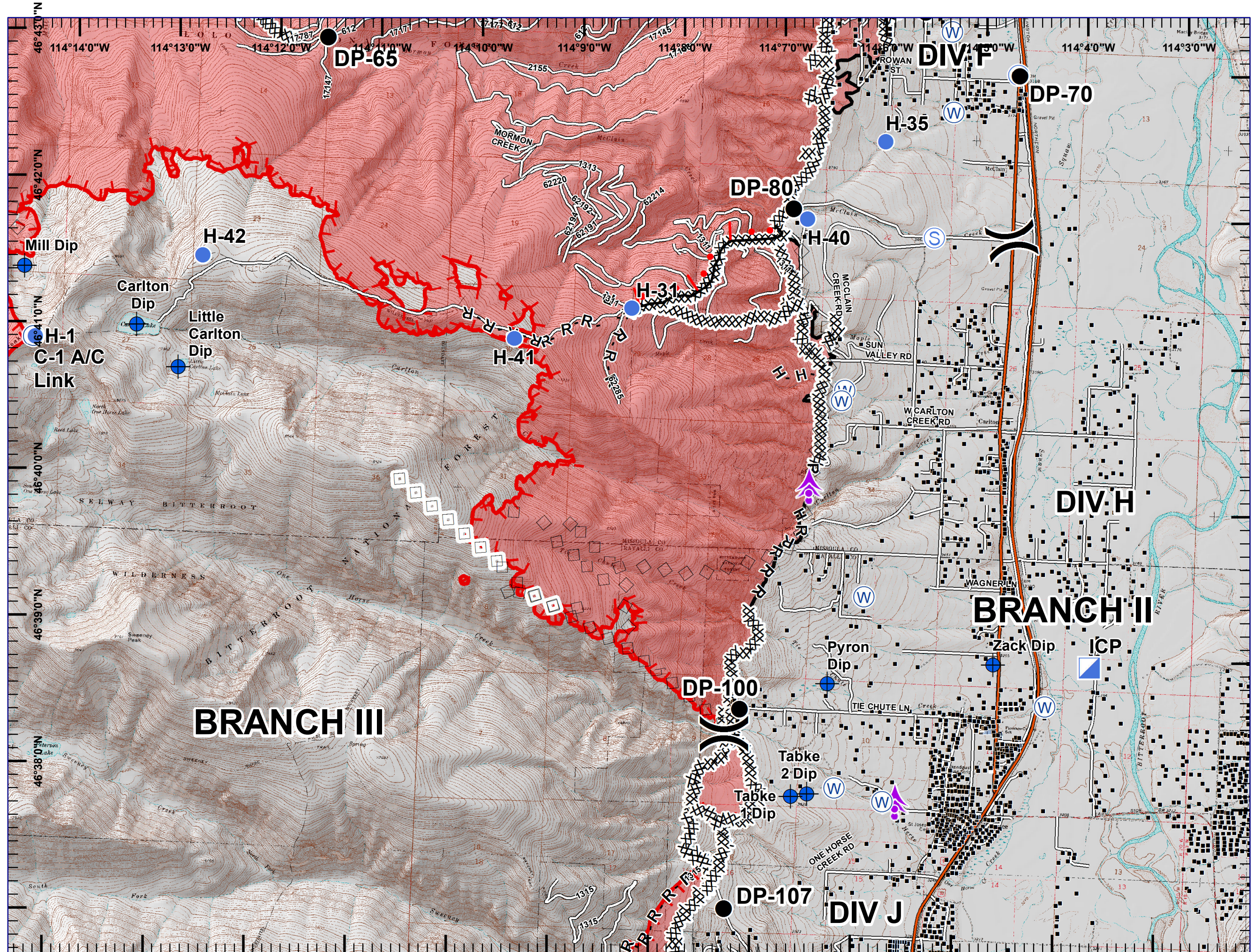
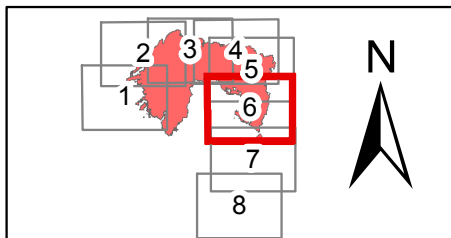
- Dip Site
- Drop Point
- Helispot
- Internet Access
- Mobile Weather Unit
- Repeater
- Staging Area
- Water Source
- Division Break
- Branch Break
- Structures
- Completed Dozer Line
- Completed Hand Line
- Road as Completed Line
- Proposed Burnout
- Active Burnout
- Aerial Retardant Drop
- Air Tanker Retardant
- Ridge/Geographic Feature
- Interstate and Highways
- Roads
- Uncontrolled Fire Edge
- Completed Line
- State Boundary
- Wildfire Daily Fire Perimeter





- Aerial Hazard
- Dip Site
- Drop Point
- Helispot
- ICP
- Repeater
- Staging Area
- Water Source
- Division Break
- Structures
- Completed Dozer Line
- Completed Hand Line
- Road as Completed Line
- Active Burnout
- Aerial Retardant Drop
- Air Tanker Retardant
- Interstate and Highways
- Roads
- Uncontrolled Fire Edge
- Completed Line
- State Boundary
- Wildfire Daily Fire Perimeter

0 1/4 1/2 3/4 1 Miles



Lolo Peak Fire

MT-LNF-001288

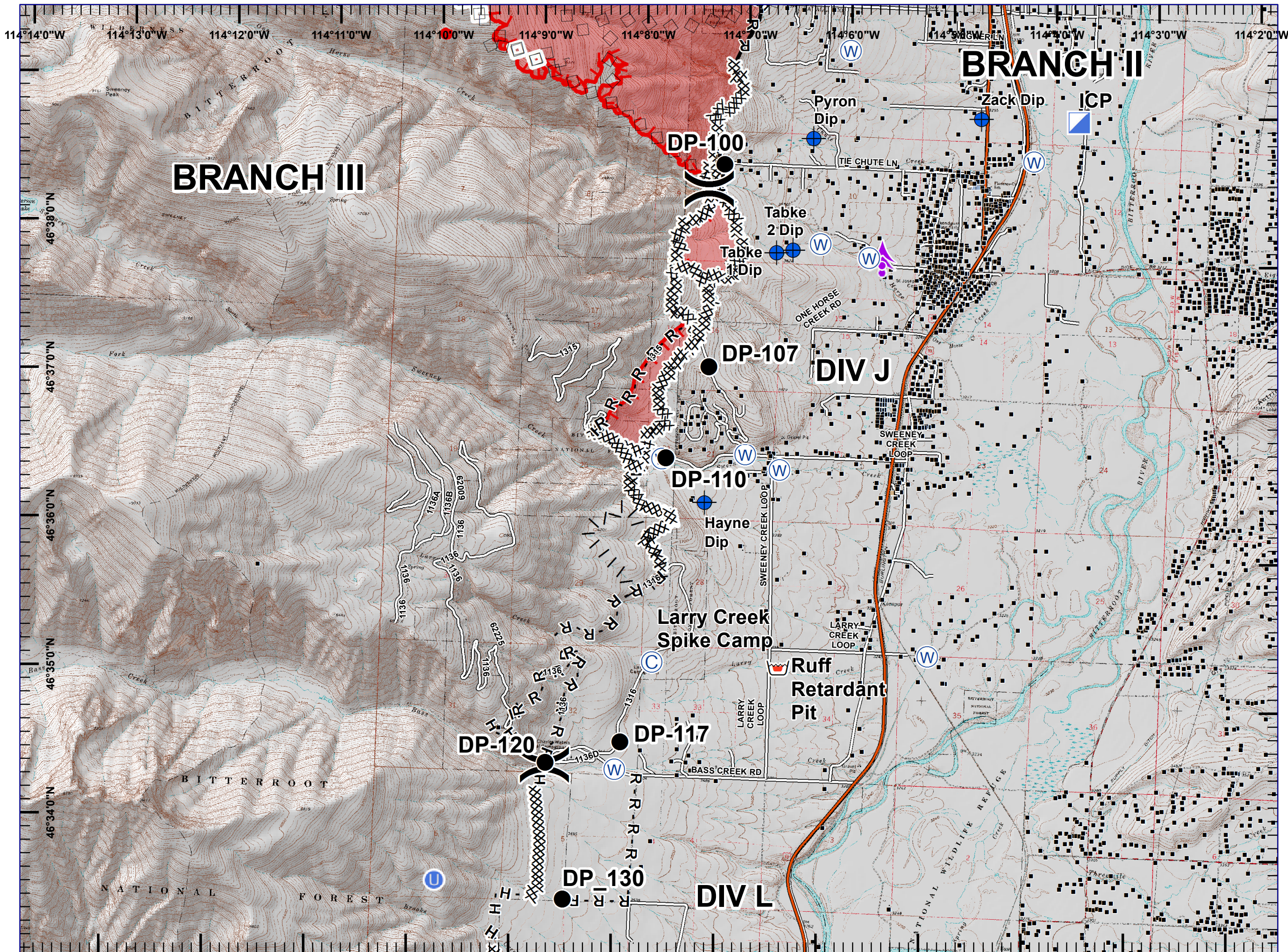
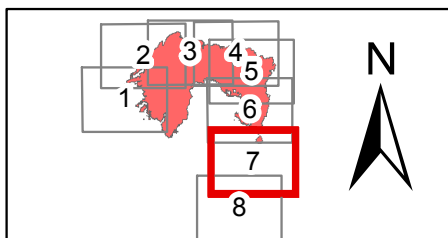
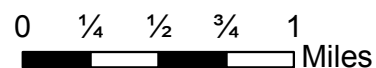
IAP Map, Day Shift

Page 7, Div J

8/27/2017



- Aerial Hazard
- Camp
- Dip Site
- Drop Point
- Unimproved Landing Area
- ICP
- Retardant/Mud Pit
- Water Source
- Division Break
- Structures
- Completed Dozer Line
- Completed Hand Line
- Road as Completed Line
- Proposed Burnout
- Aerial Retardant Drop
- Air Tanker Retardant
- Interstate and Highways
- Roads
- Uncontrolled Fire Edge
- Completed Line
- State Boundary
- Wildfire Daily Fire Perimeter



Lolo Peak Fire

MT-LNF-001288

IAP Map, Day Shift

Page 8, Div L

8/27/2017



- Camp
- Dip Site
- Drop Point
- Helibase
- Unimproved Landing Area
- Retardant/Mud Pit
- Water Source
- Division Break
- Branch Break
- Structures
- Completed Dozer Line
- Completed Hand Line
- Road as Completed Line
- Proposed Burnout
- Interstate and Highways
- Roads
- State Boundary

