

# Branch I

Lolo Creek

Sleeman Creek

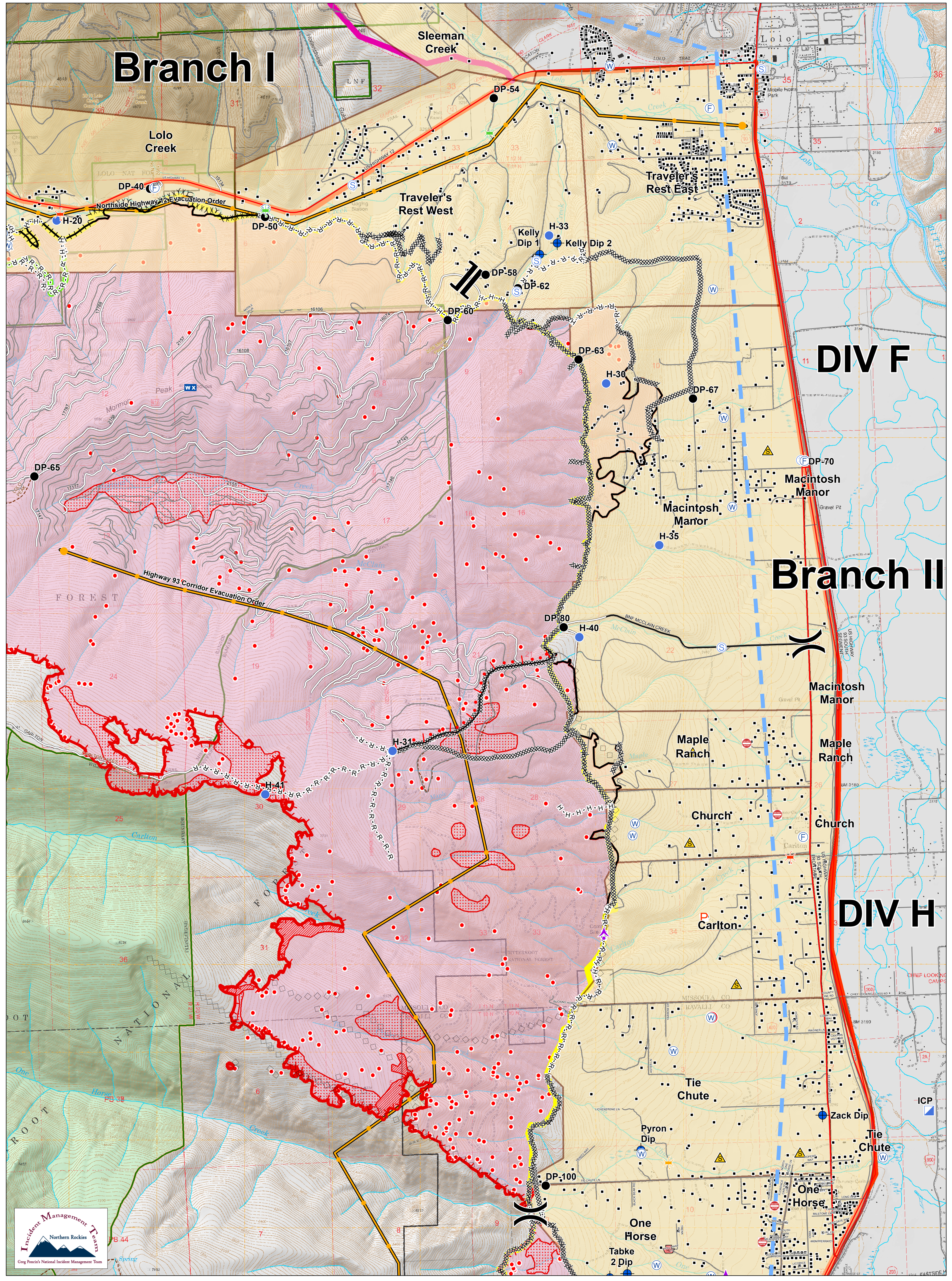
Traveler's Rest West

Traveler's Rest East

DIV F

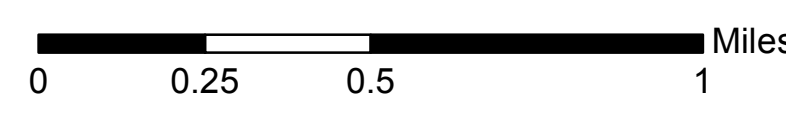
Branch II

DIV H



**Lolo Peak Fire  
Structure Protection  
Highway 93 North**  
MT-LNF-001288  
August 28, 2017  
37,246 Acres

IR data from 8/26/2017 at 2255 hrs.  
IR Isolated Heat Sources  
IR Intense Heat  
IR Scattered Heat



- |                               |                     |                         |                        |                          |                               |                           |
|-------------------------------|---------------------|-------------------------|------------------------|--------------------------|-------------------------------|---------------------------|
| Bridge, Acceptable            | Zoo                 | Staging Area            | Branch Break           | Aerial Retardant Drop    | Forest Roads                  | Fire History 1980-Present |
| Bridge, Caution               | Structures          | Water Source            | Division Break         | Air Tanker Retardant     | Other Roads                   | Streams                   |
| Bridge, Hazardous             | Aerial Hazard       | Restricted Water Source | Completed Dozer Line   | Ridge/Geographic Feature | Evacuation Areas 14           | State Boundary            |
| Dangerous: Threatening People | Dip Site            | Drop Point              | Completed Hand Line    | Completed Line           | Primary Line                  | Forest Boundaries         |
| FD Staging, FD Staging        | Helispot            | ICP                     | Road as Completed Line | Uncontrolled Fire Edge   | Alternate Line                | Wilderness                |
| Junk Yard Hazards             | Mobile Weather Unit |                         | Proposed Burnout       | TFR                      | Contingency Line              |                           |
| Safety Zone                   |                     |                         | Active Burnout         | Management Action Points | Emergency Line                |                           |
| Water Source                  |                     |                         |                        | Highways                 | Trails                        |                           |
|                               |                     |                         |                        | County Roads             | Wildfire Daily Fire Perimeter |                           |