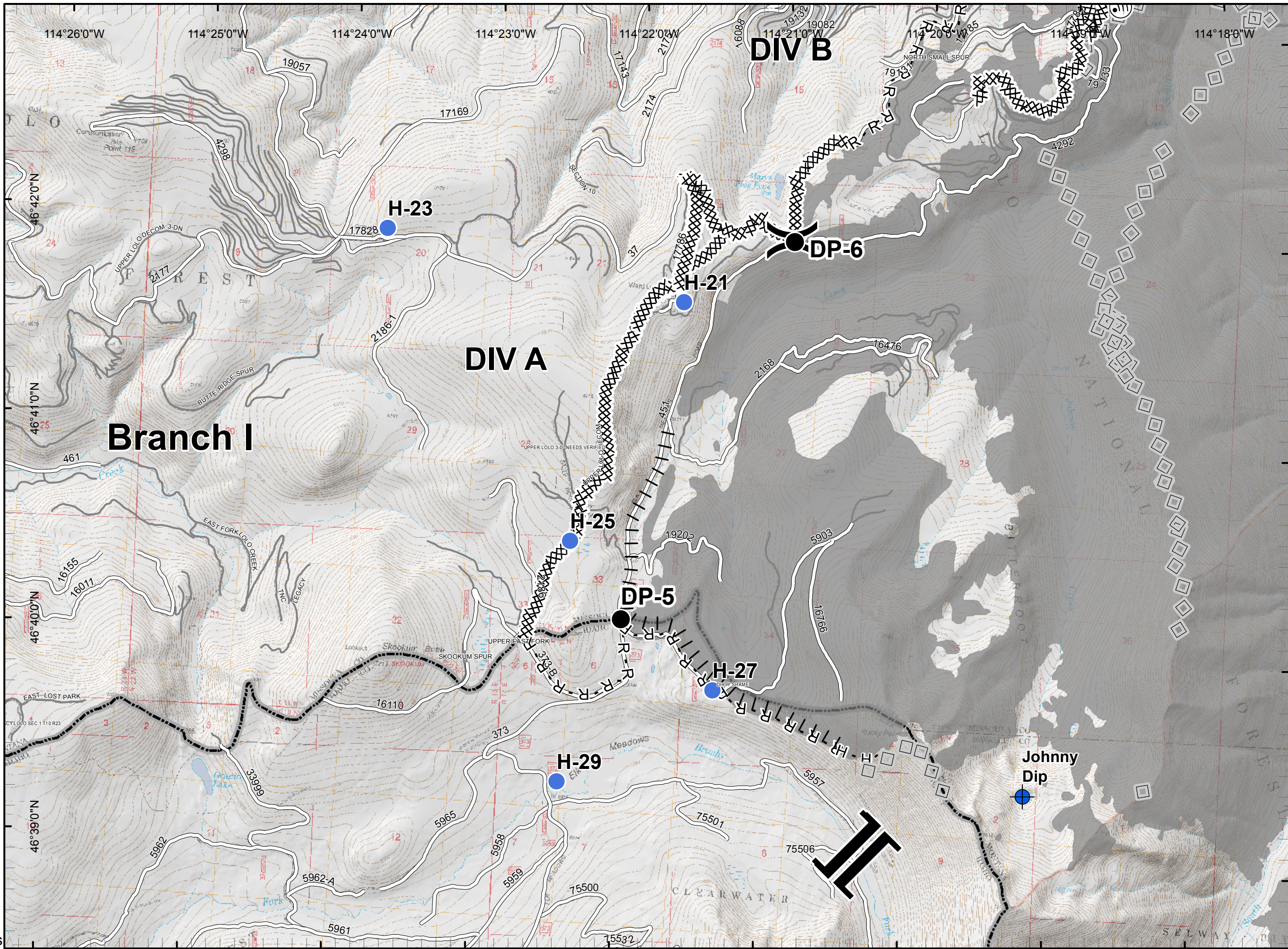


**Lolo Peak Fire**  
 MT-LNF-001288  
 IAP Map, Day Shift  
 Page 1 Div A  
 8/28/2017



- XXXXX Completed Dozer Line
- H - H Completed Hand Line
- R - R Road as Completed Line
- ||| Proposed Burnout
- ◇ ◇ Aerial Retardant Drop
- Forest Roads
- Other Roads
- ▬ Wildfire Daily Fire Perimeter
- ▭ Montana Idaho State Boundary

**Incident Management Team**  
 Northern Rockies  
 Greg Poncin's National Incident Management Team

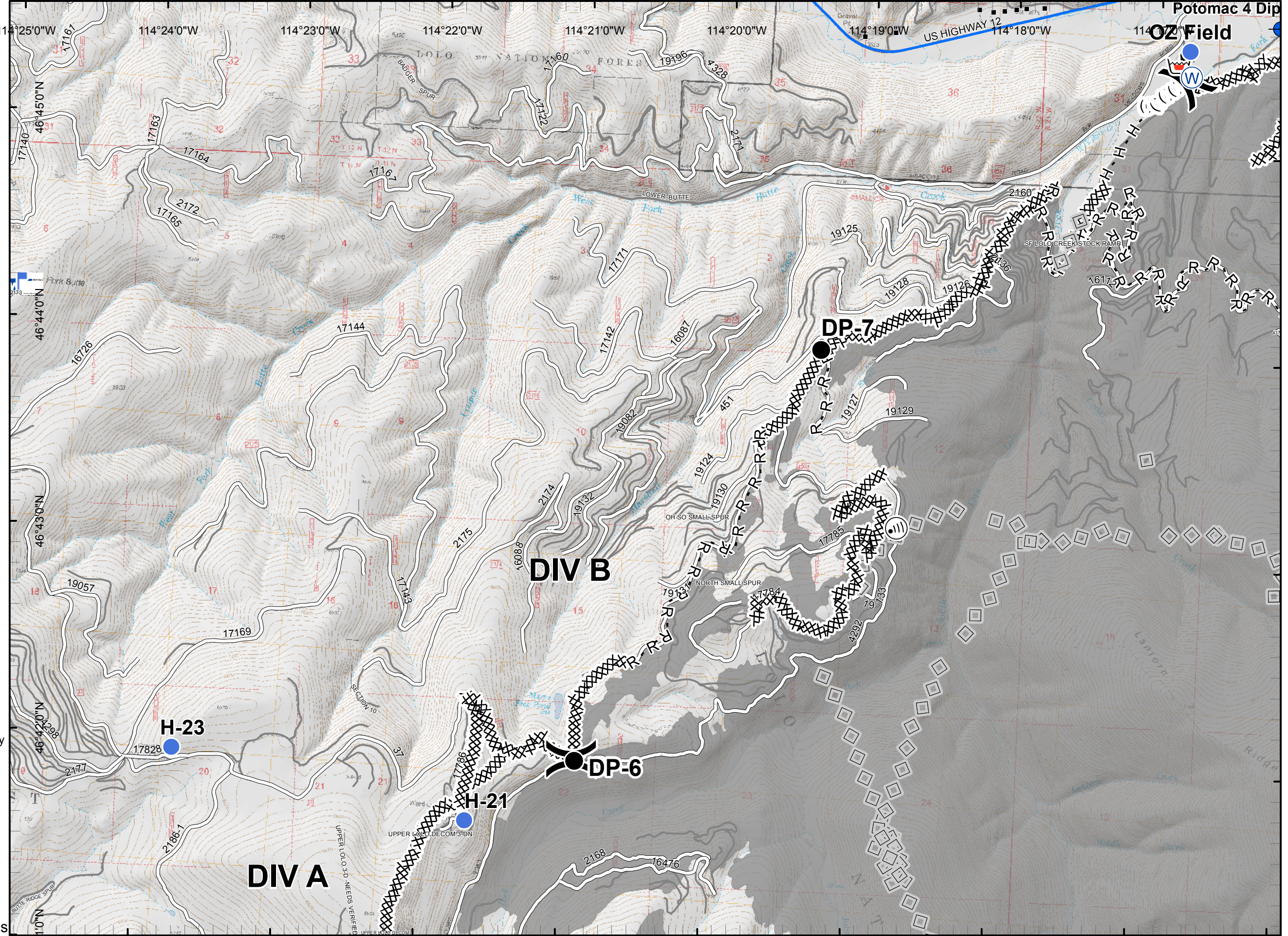
0 0.25 0.5 1 Miles

**Lolo Peak Fire**  
 MT-LNF-001288  
 IAP Map, Day Shift  
 Page 2 Div B  
 8/28/2017

- Structures
- XXXXX Completed Dozer Line
- H - H Completed Hand Line
- R - R Road as Completed Line
- ◇ ◇ Aerial Retardant Drop
- ( ( ( Ridge/Geographic Feature
- Highways
- Forest Roads
- Other Roads
- Wildfire Daily Fire Perimeter
- ▭ Montana Idaho State Boundary

Incident Management Team  
 Northern Rockies  
 Greg Poncin's National Incident Management Team

0 0.25 0.5 1 Miles

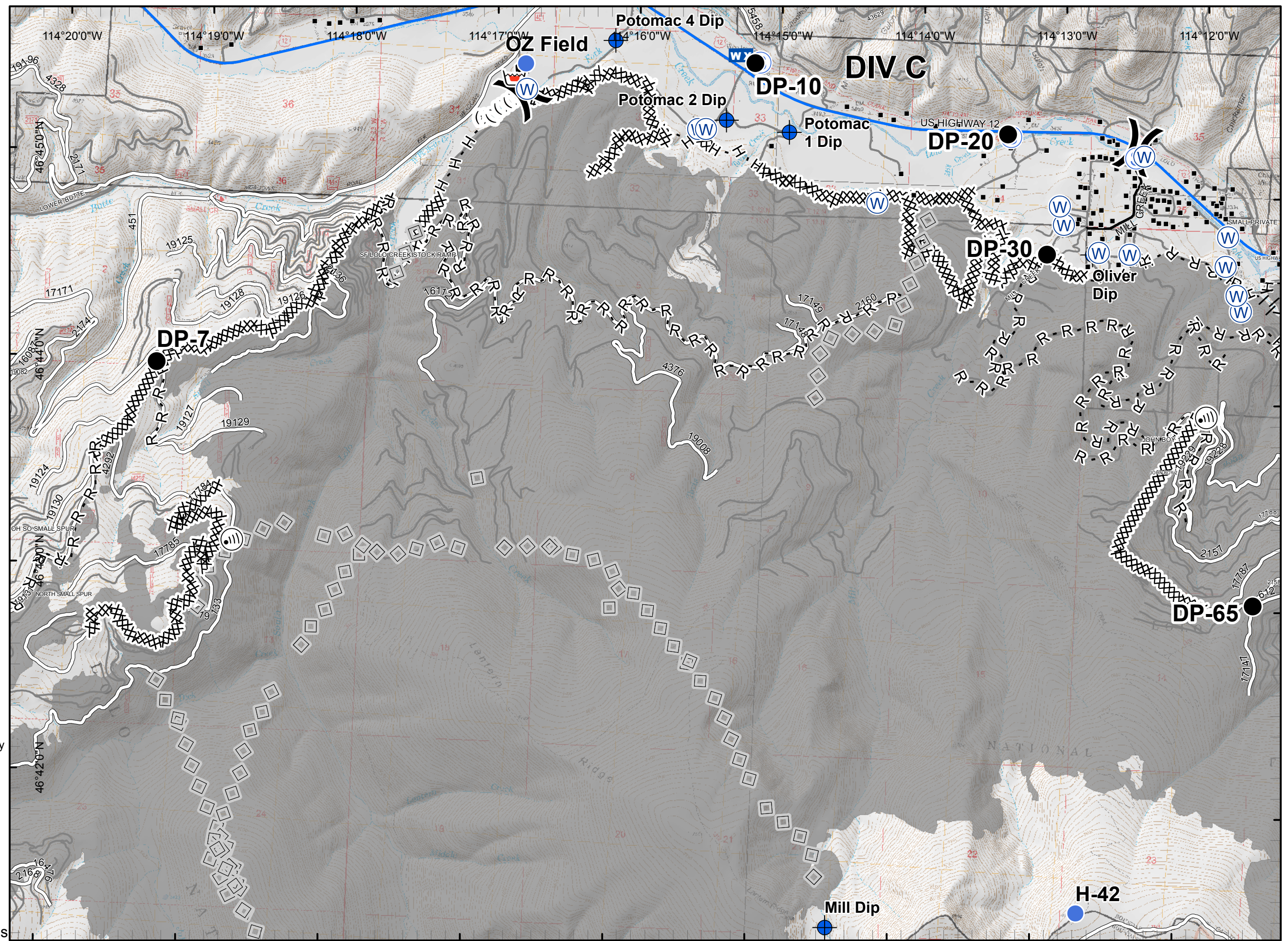


**Lolo Peak Fire**  
 MT-LNF-001288  
 IAP Map, Day Shift  
 Page 3 Div C  
 8/28/2017

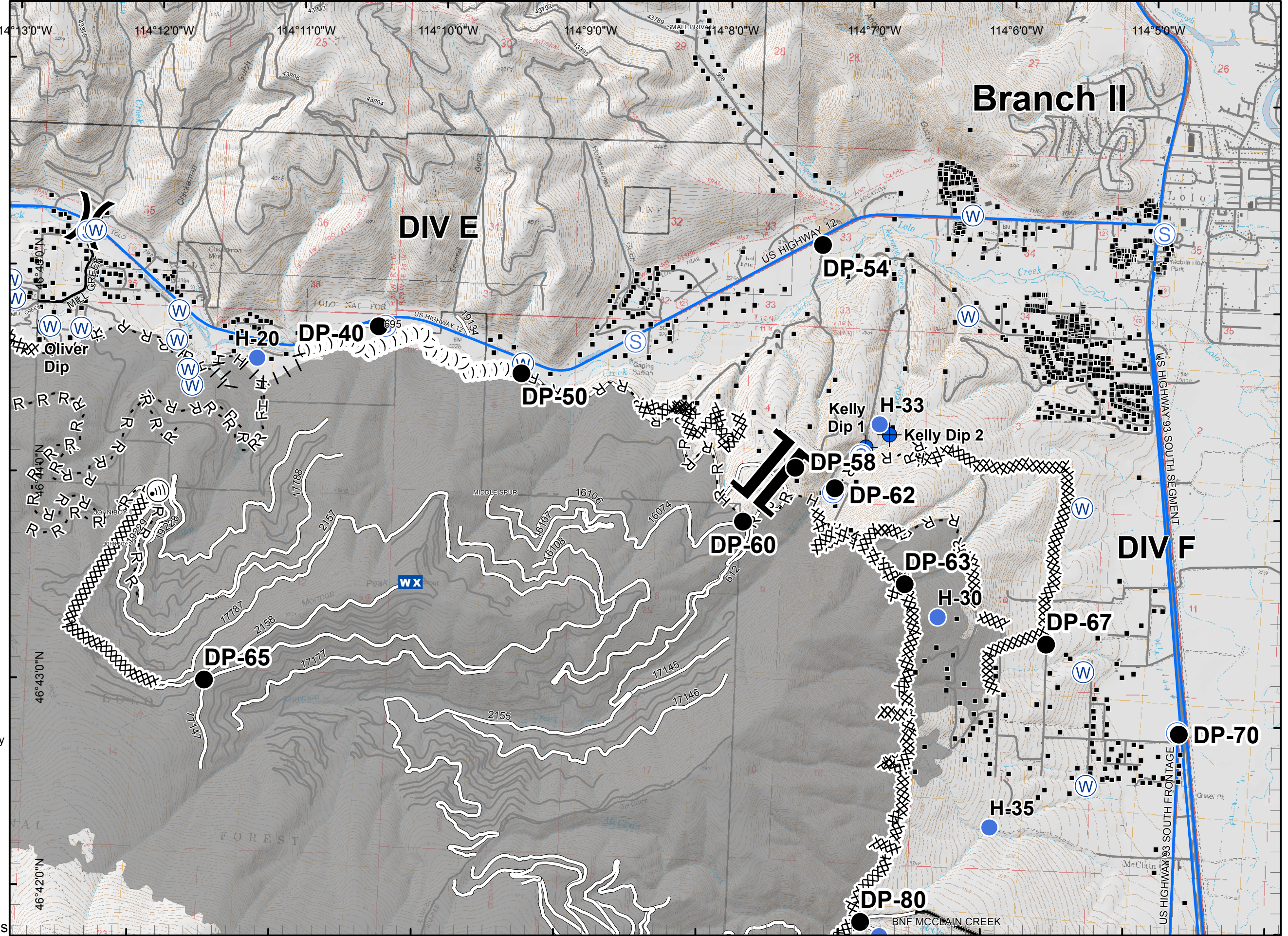
- Structures
- XXXXX Completed Dozer Line
- H - H Completed Hand Line
- R - R Road as Completed Line
- ||| Proposed Burnout
- ◇◇ Aerial Retardant Drop
- ( ( ( ) Ridge/Geographic Feature
- Highways
- County Roads
- Forest Roads
- Other Roads
- Wildfire Daily Fire Perimeter
- ▭ Montana Idaho State Boundary

Incident Management Team  
 Northern Rockies  
 Greg Poncin's National Incident Management Team

0 0.25 0.5 1 Miles



**Lolo Peak Fire**  
 MT-LNF-001288  
 IAP Map, Day Shift  
 Page 4 Div E  
 8/28/2017



- Structures
- XXXXX Completed Dozer Line
- H - H Completed Hand Line
- R - R Road as Completed Line
- ||| Proposed Burnout
- (. (. (. Ridge/Geographic Feature
- Highways
- County Roads
- Forest Roads
- Other Roads
- Wildfire Daily Fire Perimeter
- ▭ Montana Idaho State Boundary

Incident Management Team  
 Northern Rockies  
 Greg Poncin's National Incident Management Team

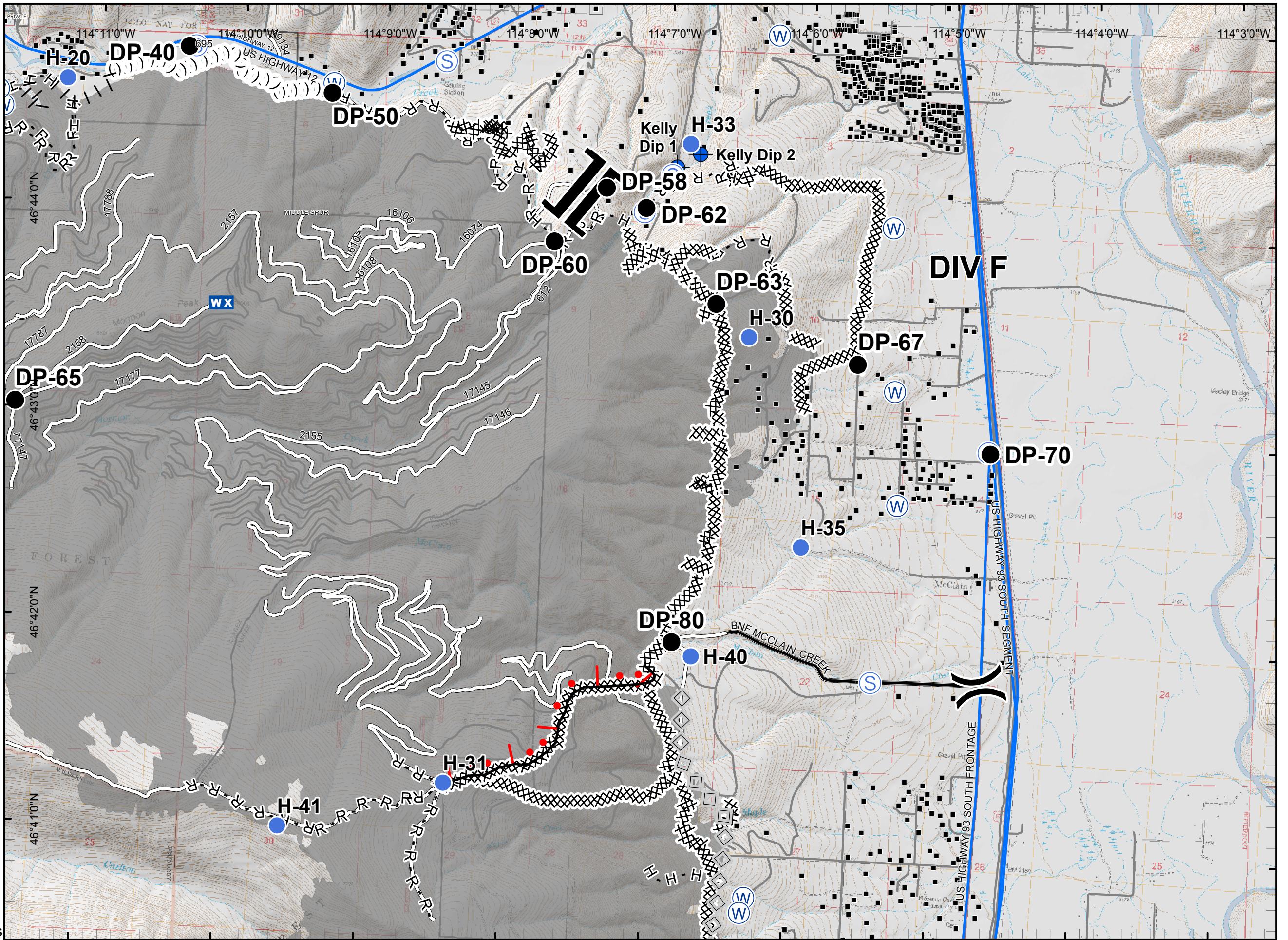
Scale: 0 0.25 0.5 1 Miles

**Lolo Peak Fire**  
 MT-LNF-001288  
 IAP Map, Day Shift  
 Page 5 Div F  
 8/28/2017

- Structures
- XXXXX Completed Dozer Line
- H - H Completed Hand Line
- R - R Road as Completed Line
- ||| Proposed Burnout
- ┆ Active Burnout
- ◇◇◇ Aerial Retardant Drop
- ( ( ( Ridge/Geographic Feature
- Highways
- County Roads
- Forest Roads
- Other Roads
- ▒ Wildfire Daily Fire Perimeter
- ▭ Montana Idaho State Boundary

Incident Management Team  
 Northern Rockies  
 Greg Poncin's National Incident Management Team

0 0.25 0.5 1 Miles

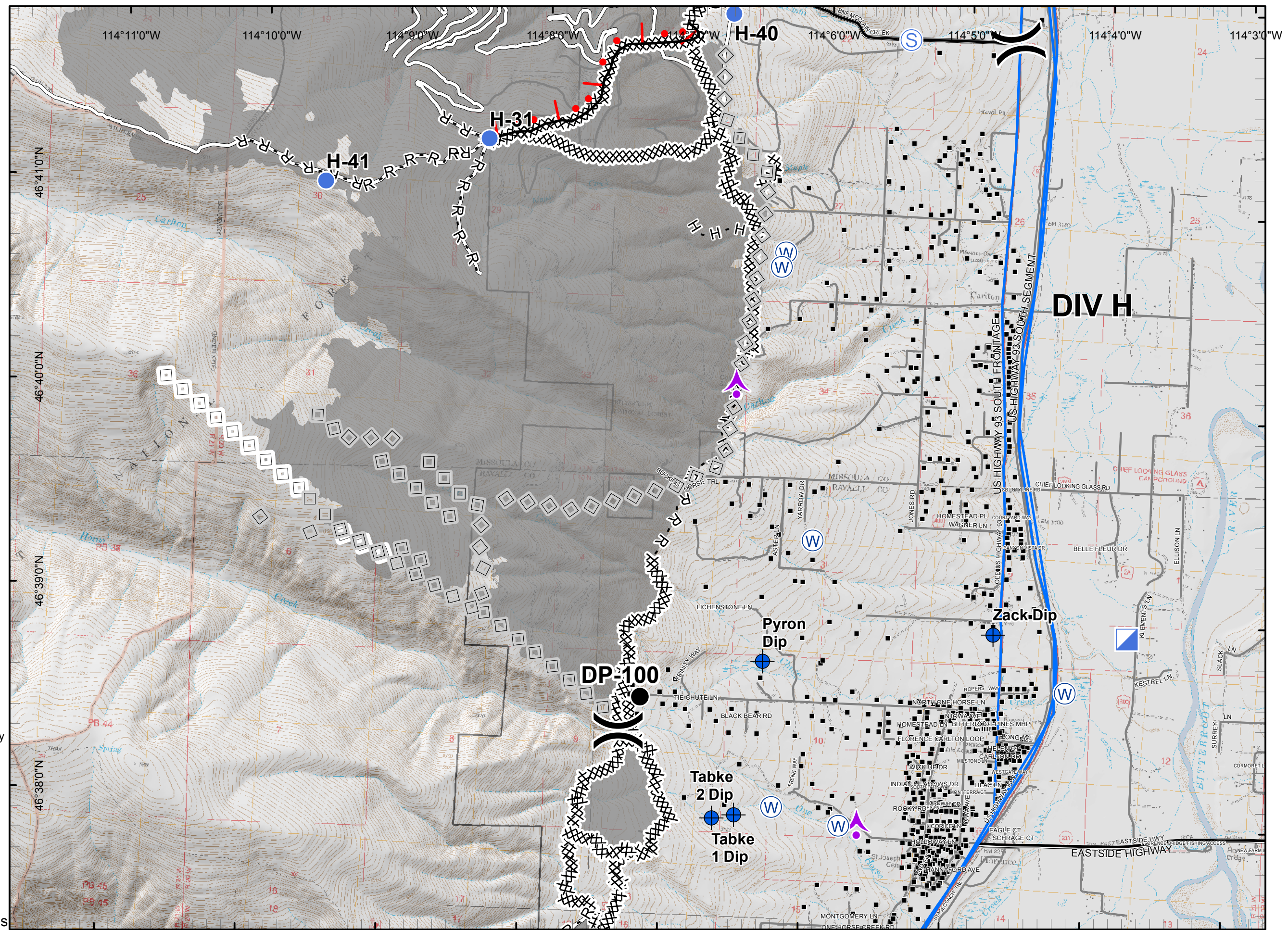


**Lolo Peak Fire**  
 MT-LNF-001288  
 IAP Map, Day Shift  
 Page 6 Div H  
 8/28/2017

- Structures
- XXXXX Completed Dozer Line
- H - H Completed Hand Line
- R - R Road as Completed Line
- ┆● Active Burnout
- ◊◊ Aerial Retardant Drop
- ◊◊ Air Tanker Retardant
- Highways
- County Roads
- Forest Roads
- Other Roads
- Wildfire Daily Fire Perimeter
- ▭ Montana Idaho State Boundary

Incident Management Team  
 Northern Rockies  
 Greg Poncin's National Incident Management Team

0 0.25 0.5 1 Miles



**DIV H**

**DP-100**

**Pyron Dip**

**Zack Dip**

**Tabke 2 Dip**

**Tabke 1 Dip**

**EASTSIDE HIGHWAY**

**US HIGHWAY 93 SOUTH SEGMENT**

**H-40**

**H-31**

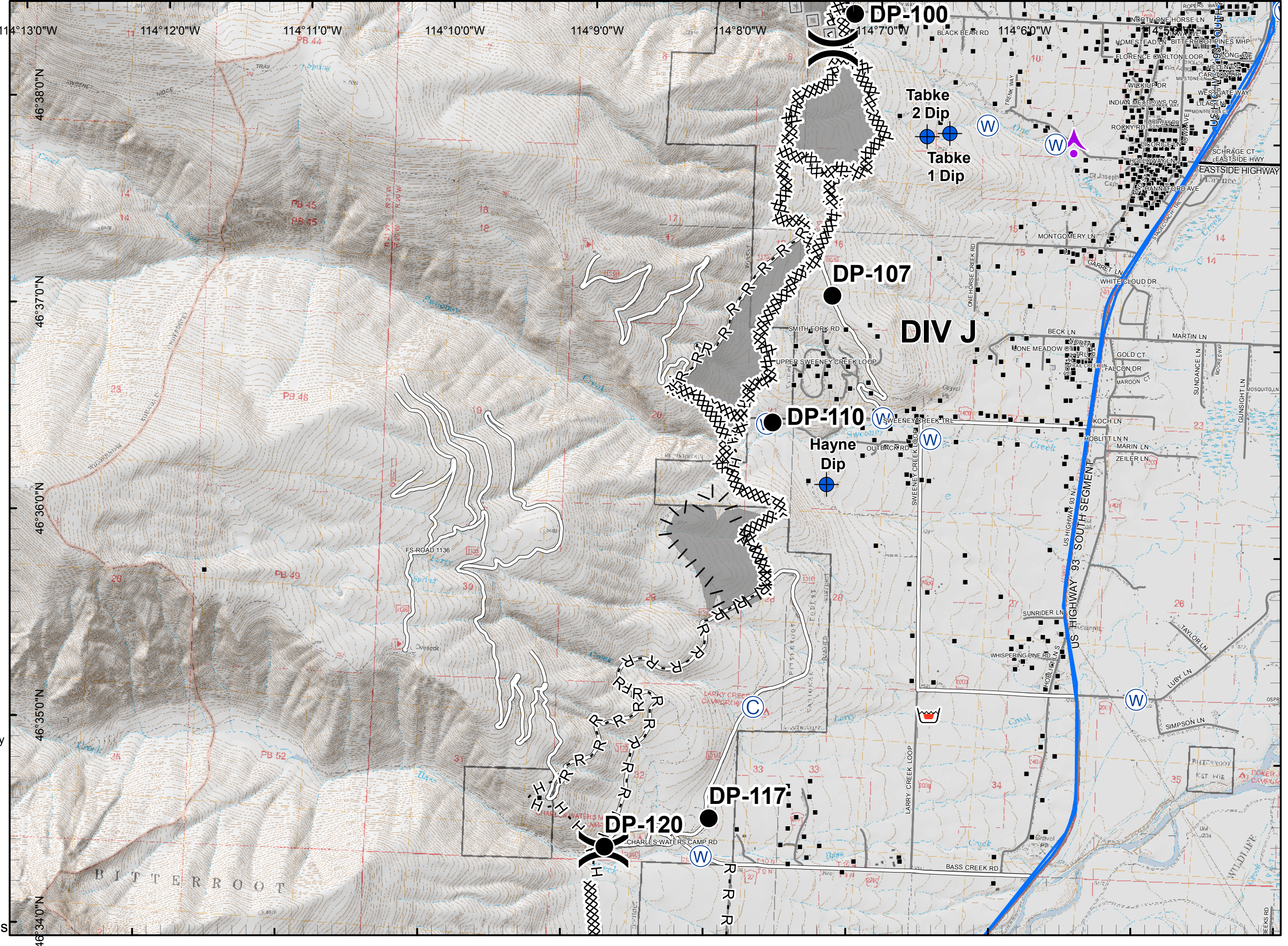
**H-41**

**Lolo Peak Fire**  
 MT-LNF-001288  
 IAP Map, Day Shift  
 Page 7 Div J  
 8/28/2017

- Structures
- XXXXX Completed Dozer Line
- H - H Completed Hand Line
- R - R Road as Completed Line
- ||| Proposed Burnout
- ◇ ◇ Aerial Retardant Drop
- Highways
- County Roads
- Forest Roads
- Other Roads
- Wildfire Daily Fire Perimeter
- ▭ Montana Idaho State Boundary

Incident Management Team  
 Northern Rockies  
 Greg Poncin's National Incident Management Team

0 0.25 0.5 1 Miles



**Lolo Peak Fire**  
 MT-LNF-001288  
 IAP Map, Day Shift  
 Page 8 Div L  
 8/28/2017

- Structures
- XXXXX Completed Dozer Line
- H - H Completed Hand Line
- R - R Road as Completed Line
- Highways
- County Roads
- Forest Roads
- Other Roads
- ▭ Montana Idaho State Boundary

Incident Management Team  
 Northern Rockies  
 Greg Poncin's National Incident Management Team

0 0.25 0.5 1 Miles

