

Branch I

Lolo Creek

Sleeman Creek

Traveler's Rest West

Traveler's Rest East

DIV F

Branch II

Macintosh Manor

Maple Ranch

Church

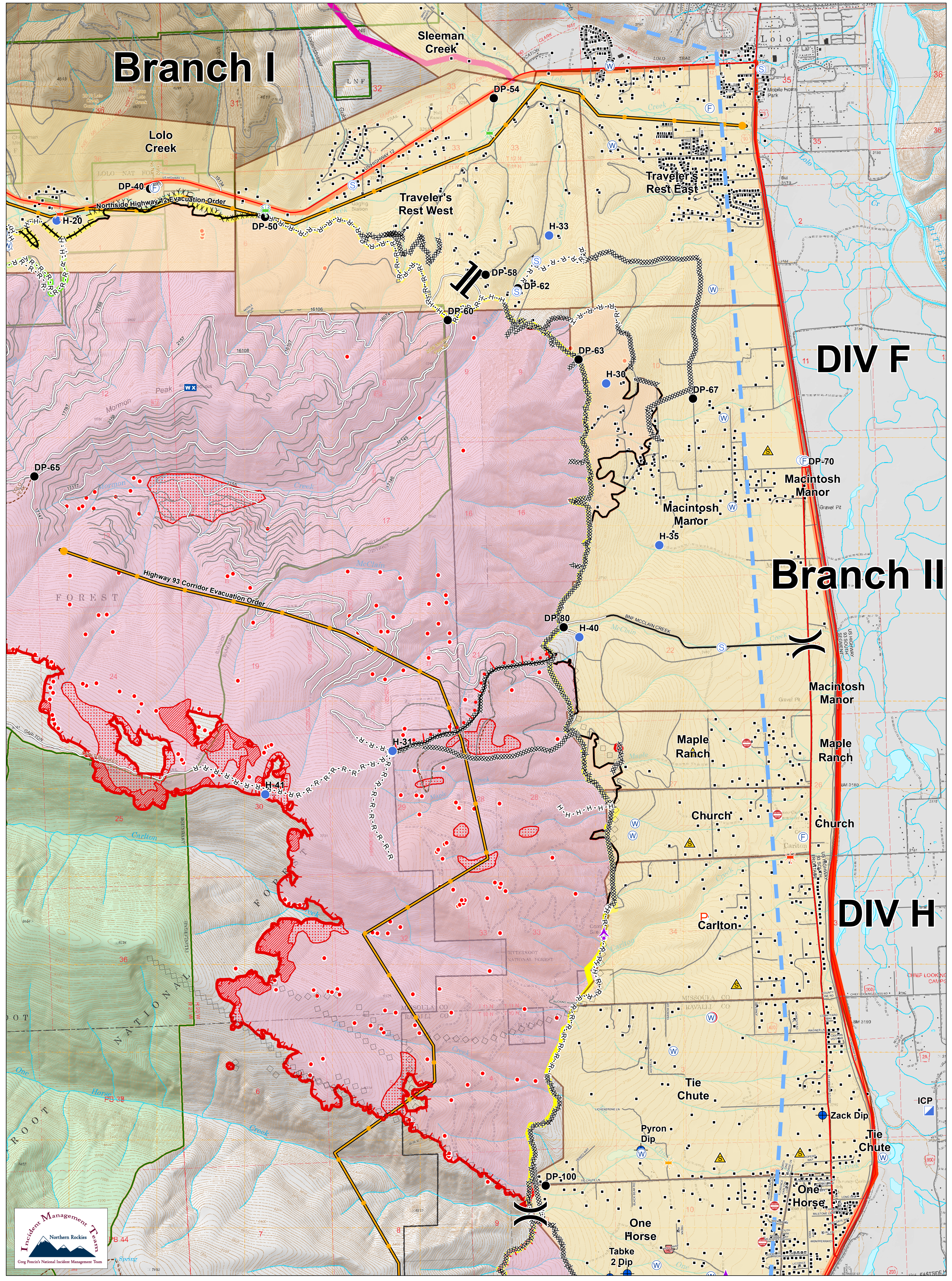
DIV H

Tie Chute

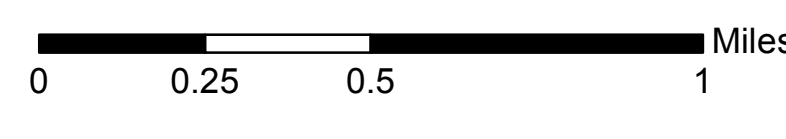
Pyron Dip

One Horse

Tabke 2 Dip



**Lolo Peak Fire
Structure Protection
Highway 93 North**
MT-LNF-001288
August 29, 2017
37,844 Acres



IR data from 8/28/2017 at 0043 hrs.
 IR Isolated Heat Sources
 IR Intense Heat
 IR Scattered Heat

- | | | | | | | |
|-------------------------------|---------------------|-------------------------|--------------------------|--------------------------|-------------------------------|---------------------------|
| Bridge, Acceptable | Zoo | Staging Area | Branch Break | Aerial Retardant Drop | Forest Roads | Fire History 1980-Present |
| Bridge, Caution | Structures | Water Source | Completed Hand Line | Air Tanker Retardant | Other Roads | Streams |
| Bridge, Hazardous | Aerial Hazard | Restricted Water Source | Road as Completed Line | Ridge/Geographic Feature | Evacuation Areas 14 | Waterbodies |
| Dangerous: Threatening People | Dip Site | Drop Point | Proposed Burnout | Completed Line | Primary Line | State Boundary |
| FD Staging, FD Staging | Helispot | ICP | Active Burnout | Uncontrolled Fire Edge | Alternate Line | Forest Boundaries |
| Junk Yard Hazards | Mobile Weather Unit | Division Break | Management Action Points | TFR | Contingency Line | Wilderness |
| Safety Zone | | | Highways | Trails | Wildfire Daily Fire Perimeter | |
| Water Source | | | County Roads | | | |