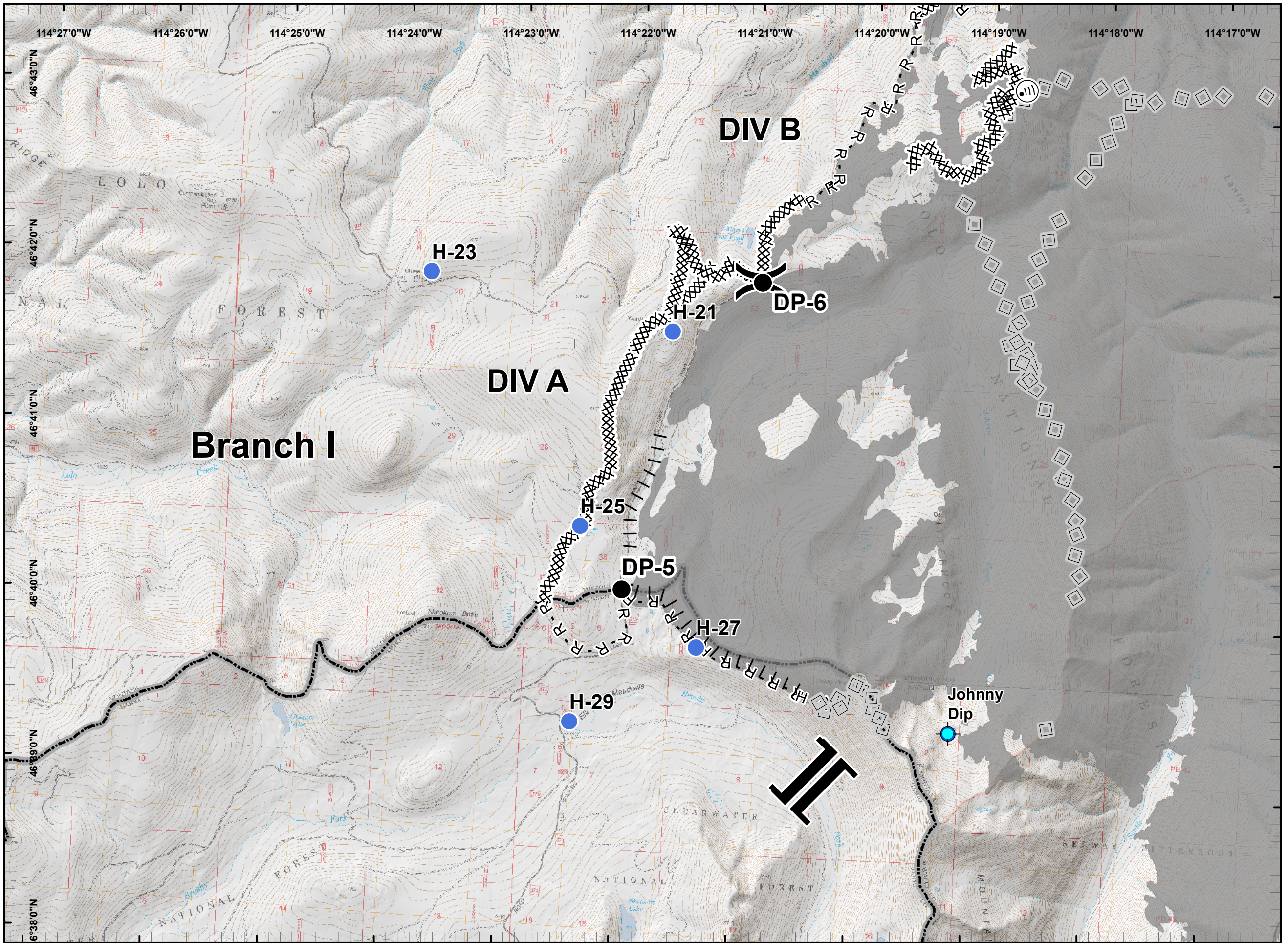


**Lolo Peak Fire**  
 MT-LNF-001288  
 IAP Map, Day Shift  
 Page 1 Div A  
 8/29/2017



- XXXXX Completed Dozer Line
- H - H Completed Hand Line
- R - R Road as Completed Line
- ||| Proposed Burnout
- ◇ ◇ Aerial Retardant Drop
- Wildfire Daily Fire Perimeter
- ▭ Montana Idaho State Boundary

0 0.3 0.6 1.2 Miles

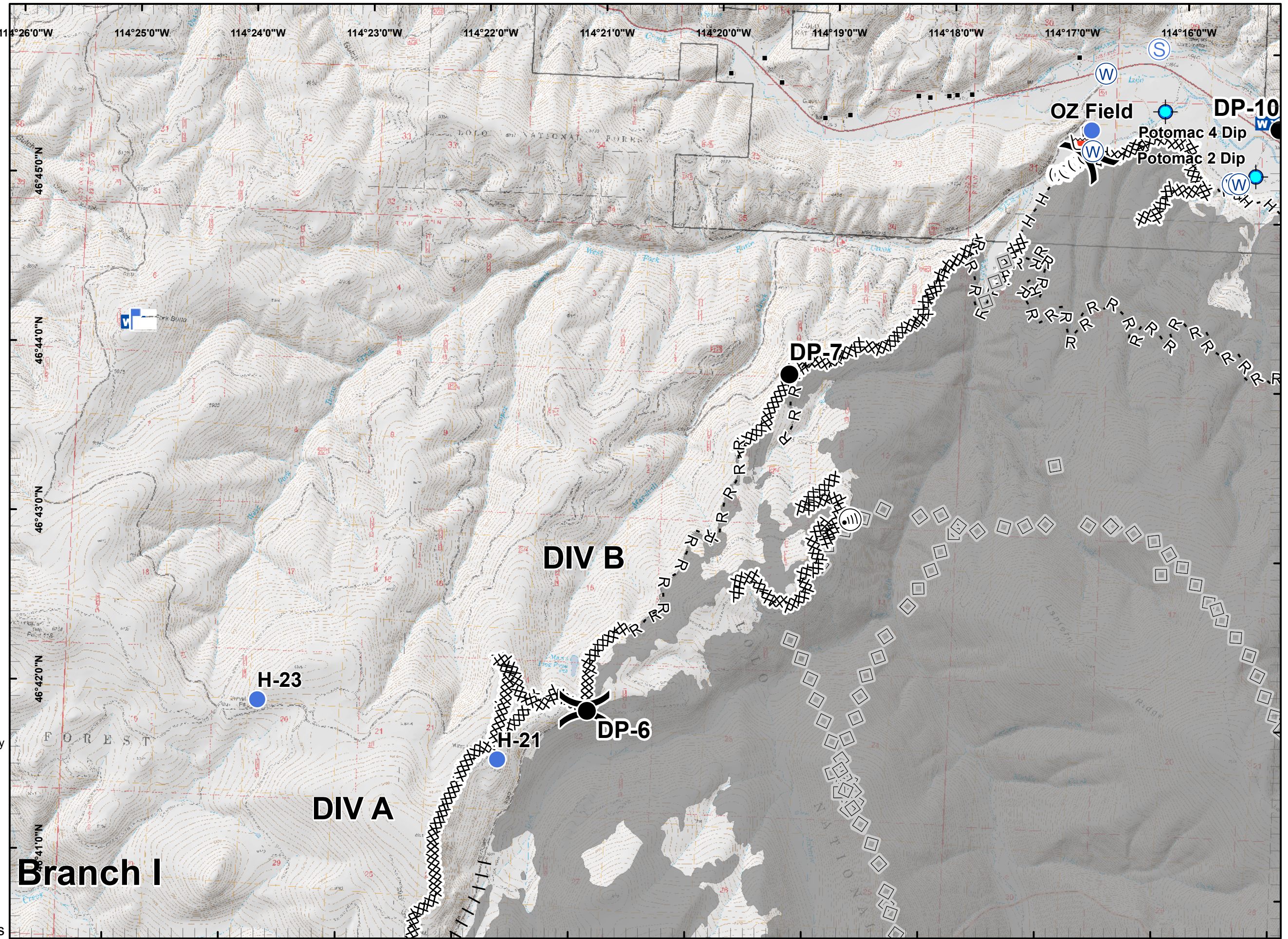


**Lolo Peak Fire**  
 MT-LNF-001288  
 IAP Map, Day Shift  
 Page 2 Div B  
 8/29/2017

- Structures
- XXXXX Completed Dozer Line
- H - H Completed Hand Line
- R - R Road as Completed Line
- ||| Proposed Burnout
- ◇◇◇ Aerial Retardant Drop
- (( )) Ridge/Geographic Feature
- Wildfire Daily Fire Perimeter
- ▭ Montana Idaho State Boundary

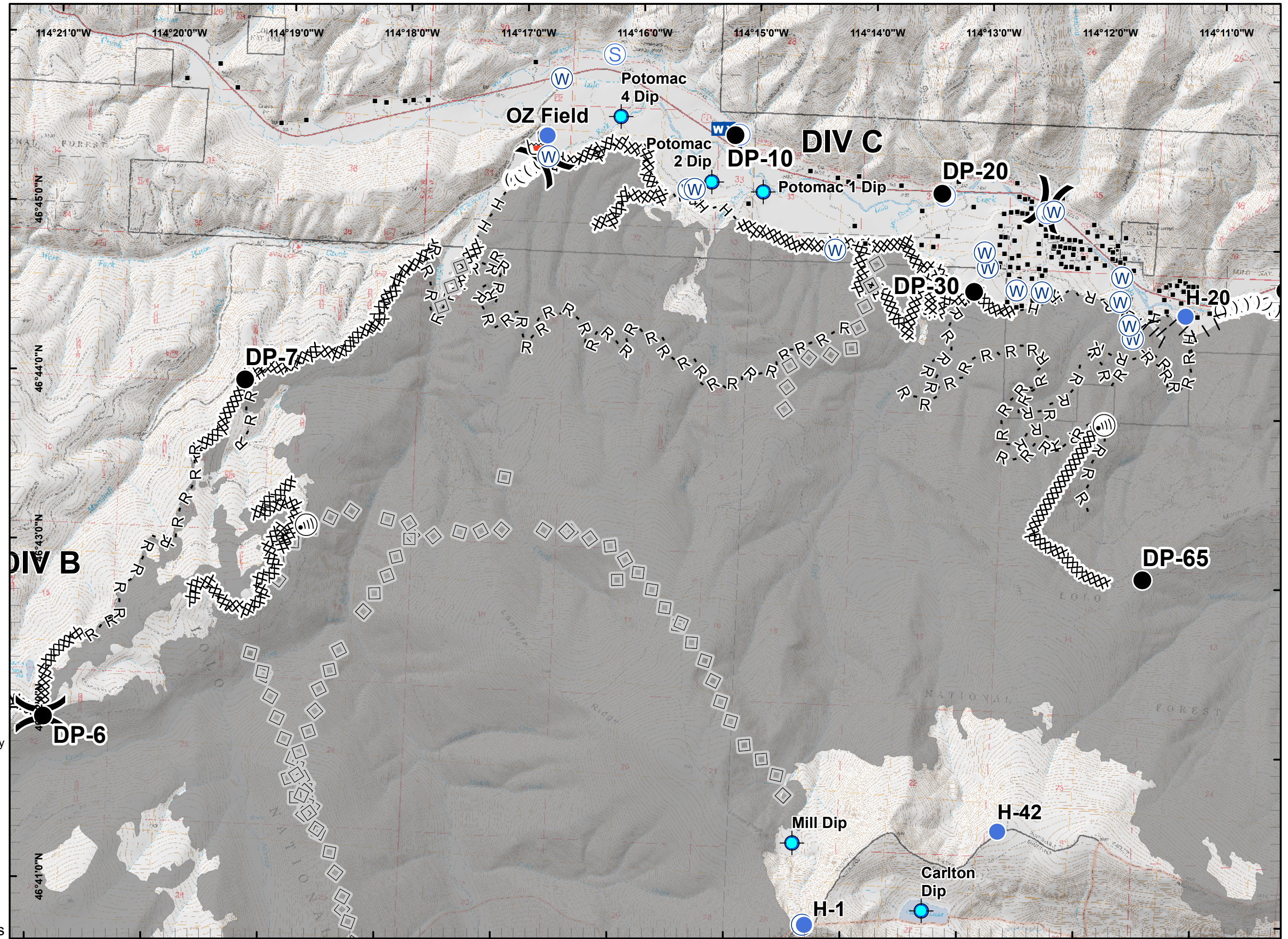
Incident Management Team  
 Northern Rockies  
 Greg Poncin's National Incident Management Team

0 0.3 0.6 1.2 Miles





**Lolo Peak Fire**  
 MT-LNF-001288  
 IAP Map, Day Shift  
 Page 3 Div C  
 8/29/2017



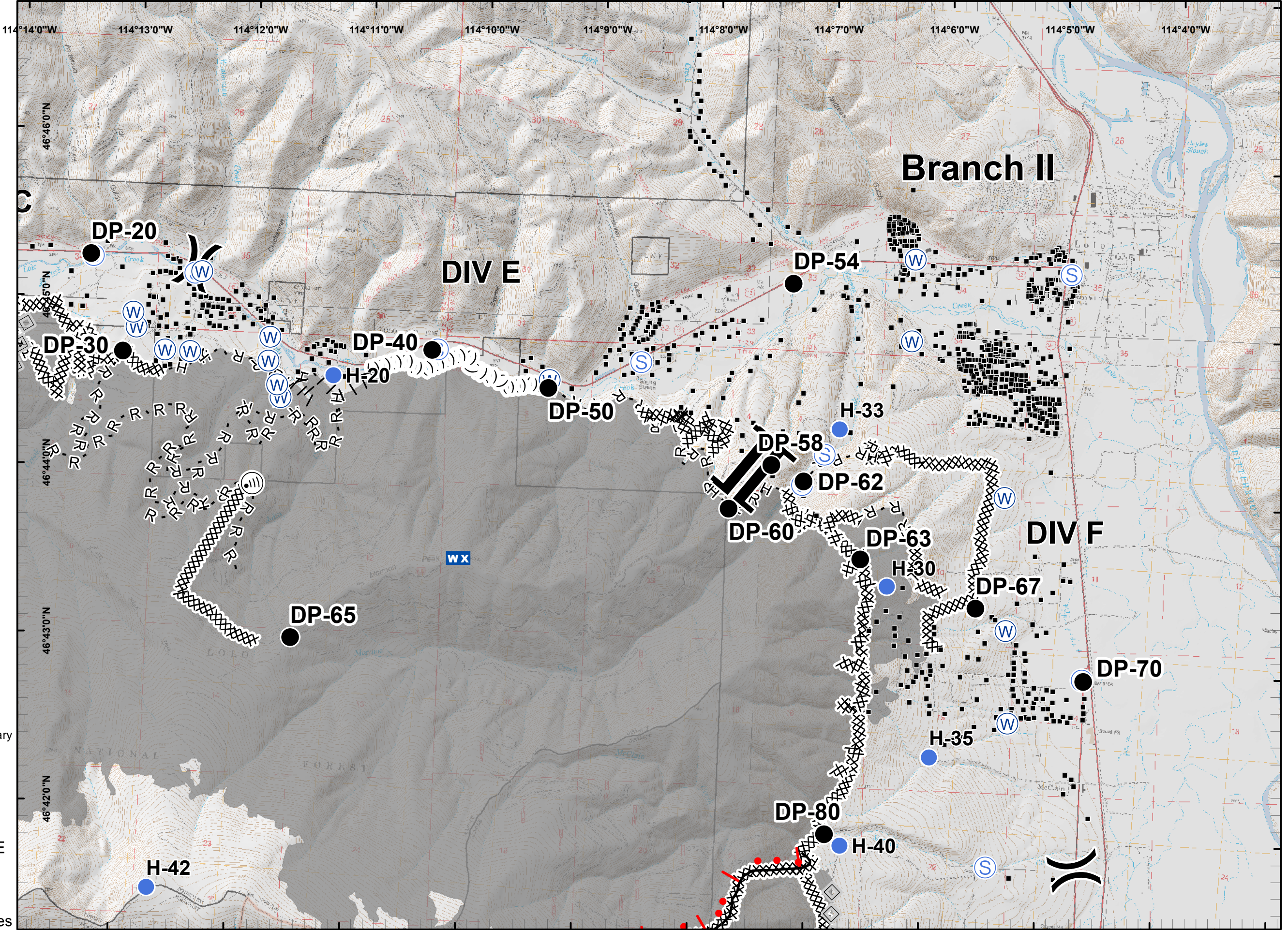
- Structures
- XXXXX Completed Dozer Line
- H - H Completed Hand Line
- R - R Road as Completed Line
- ||| Proposed Burnout
- ◇◇◇ Aerial Retardant Drop
- (( )) Ridge/Geographic Feature
- Wildfire Daily Fire Perimeter
- ▭ Montana Idaho State Boundary

Incident Management Team  
 Northern Rockies  
 Greg Poncin's National Incident Management Team

0 0.3 0.6 1.2 Miles



**Lolo Peak Fire**  
 MT-LNF-001288  
 IAP Map, Day Shift  
 Page 4 Div E  
 8/29/2017



- Structures
- XXXXX Completed Dozer Line
- H - H Completed Hand Line
- R - R Road as Completed Line
- ||| Proposed Burnout
- Active Burnout
- ◇◇ Aerial Retardant Drop
- ( ( ) Ridge/Geographic Feature
- Wildfire Daily Fire Perimeter
- ▭ Montana Idaho State Boundary

Incident Management Team  
 Northern Rockies  
 Greg Poncin's National Incident Management Team

0 0.3 0.6 1.2 Miles

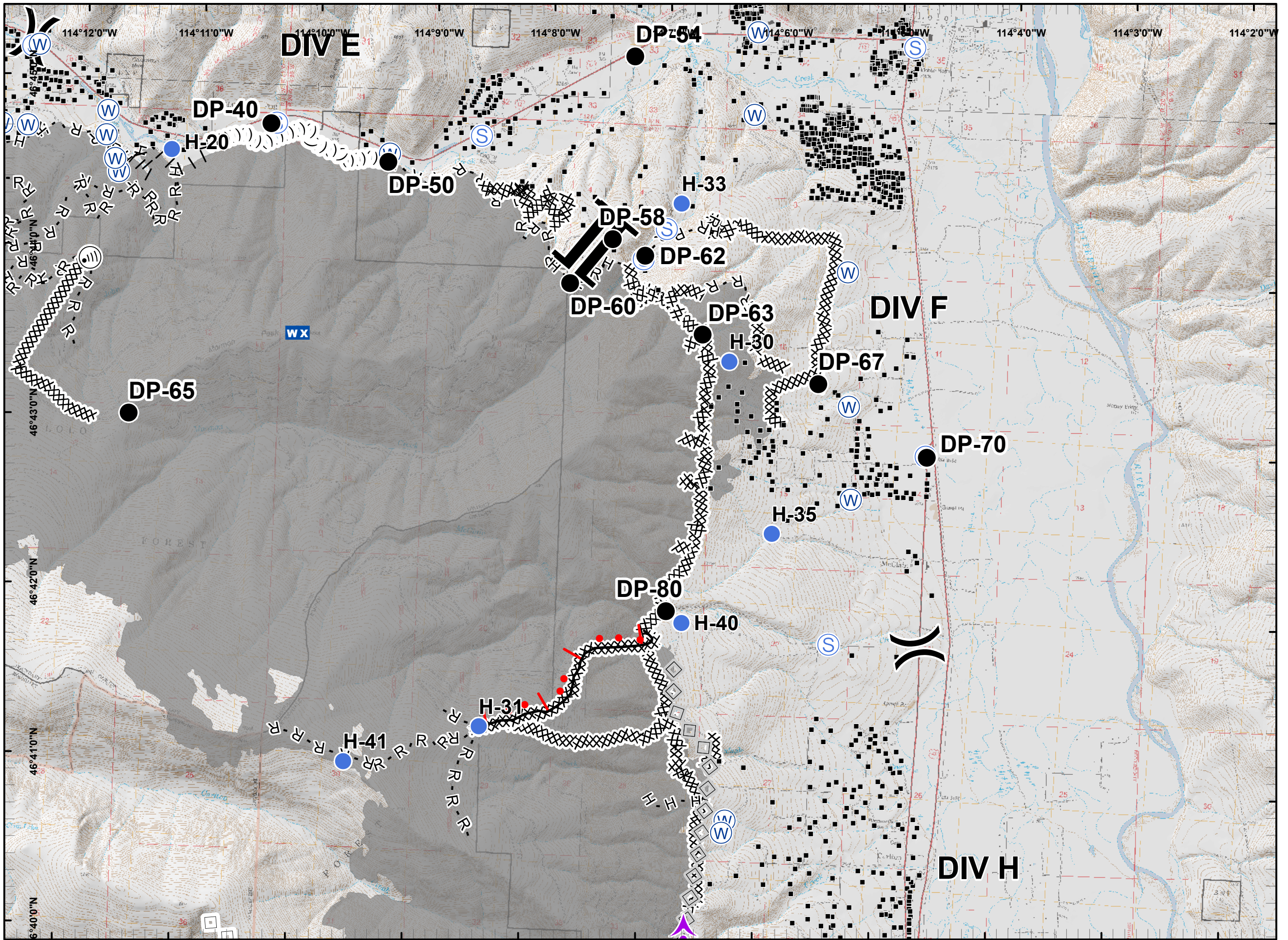


**Lolo Peak Fire**  
 MT-LNF-001288  
 IAP Map, Day Shift  
 Page 5 Div F  
 8/29/2017

- Structures
- XXXXX Completed Dozer Line
- H - H Completed Hand Line
- R - R Road as Completed Line
- ||| Proposed Burnout
- |● Active Burnout
- ◇◇ Aerial Retardant Drop
- ◇◇ Air Tanker Retardant
- (.)(.) Ridge/Geographic Feature
- Wildfire Daily Fire Perimeter
- ▭ Montana Idaho State Boundary

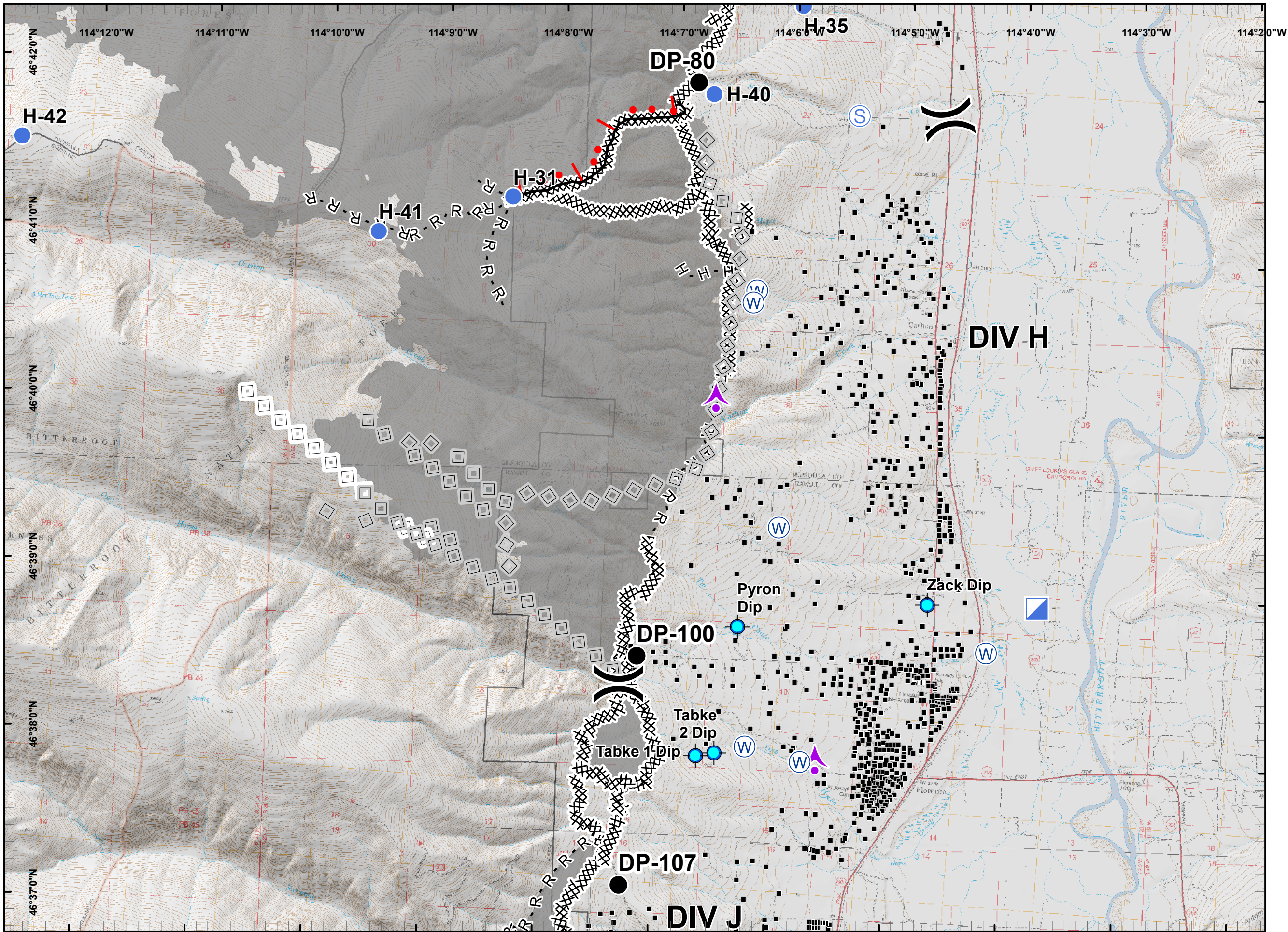
Incident Management Team  
 Northern Rockies  
 Greg Poncin's National Incident Management Team

0 0.3 0.6 1.2 Miles





**Lolo Peak Fire**  
 MT-LNF-001288  
 IAP Map, Day Shift  
 Page 6 Div H  
 8/29/2017



- Structures
- XXXXX Completed Dozer Line
- H - H Completed Hand Line
- R - R Road as Completed Line
- Active Burnout
- ◇ Aerial Retardant Drop
- ◇ Air Tanker Retardant
- Wildfire Daily Fire Perimeter
- ▭ Montana Idaho State Boundary

0 0.3 0.6 1.2

Miles

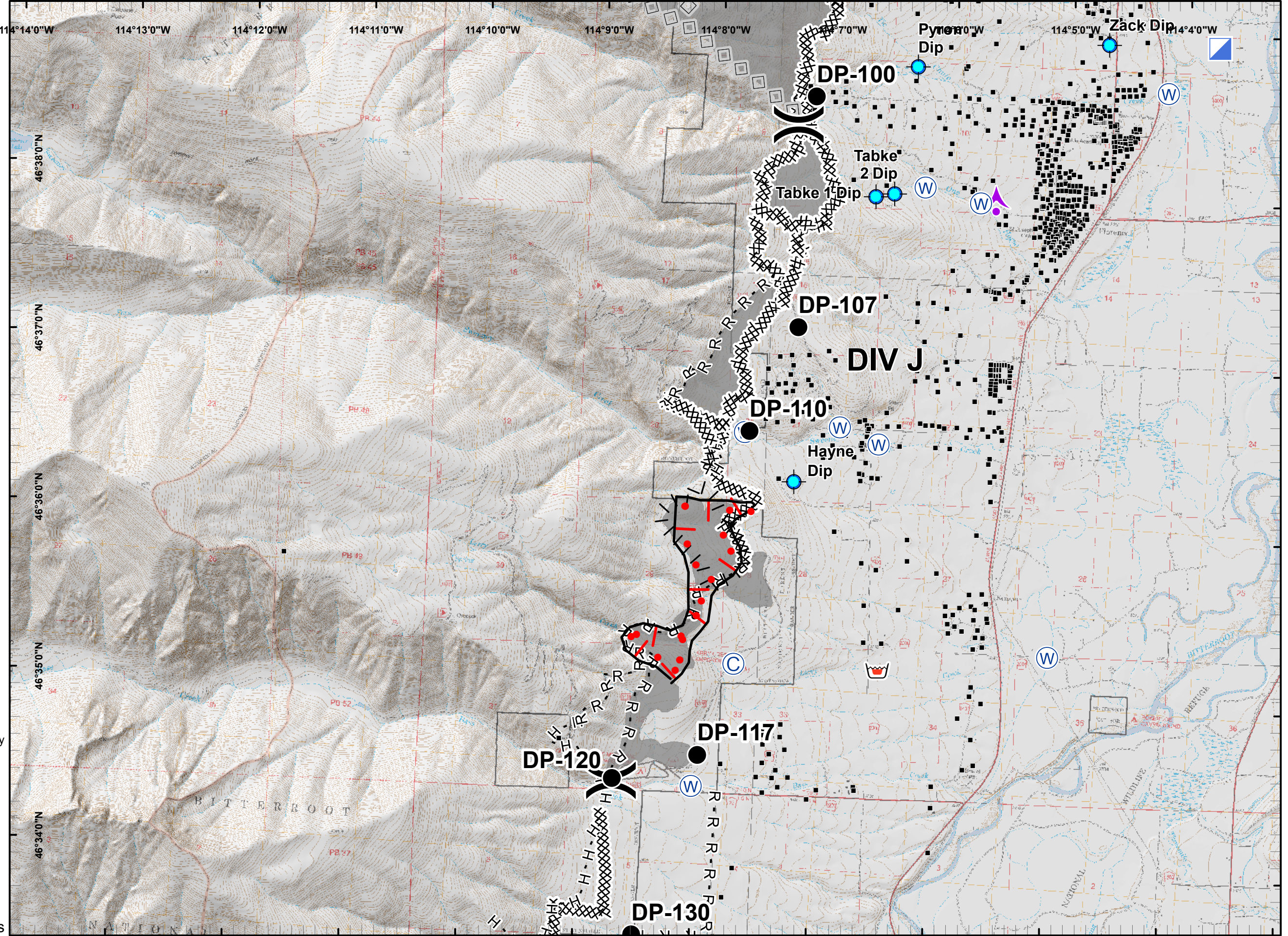


**Lolo Peak Fire**  
 MT-LNF-001288  
 IAP Map, Day Shift  
 Page 7 Div J  
 8/29/2017

- Structures
- XXXXX Completed Dozer Line
- H - H Completed Hand Line
- R - R Road as Completed Line
- ||| Proposed Burnout
- |● Active Burnout
- ◇◇ Aerial Retardant Drop
- Wildfire Daily Fire Perimeter
- ▭ Montana Idaho State Boundary

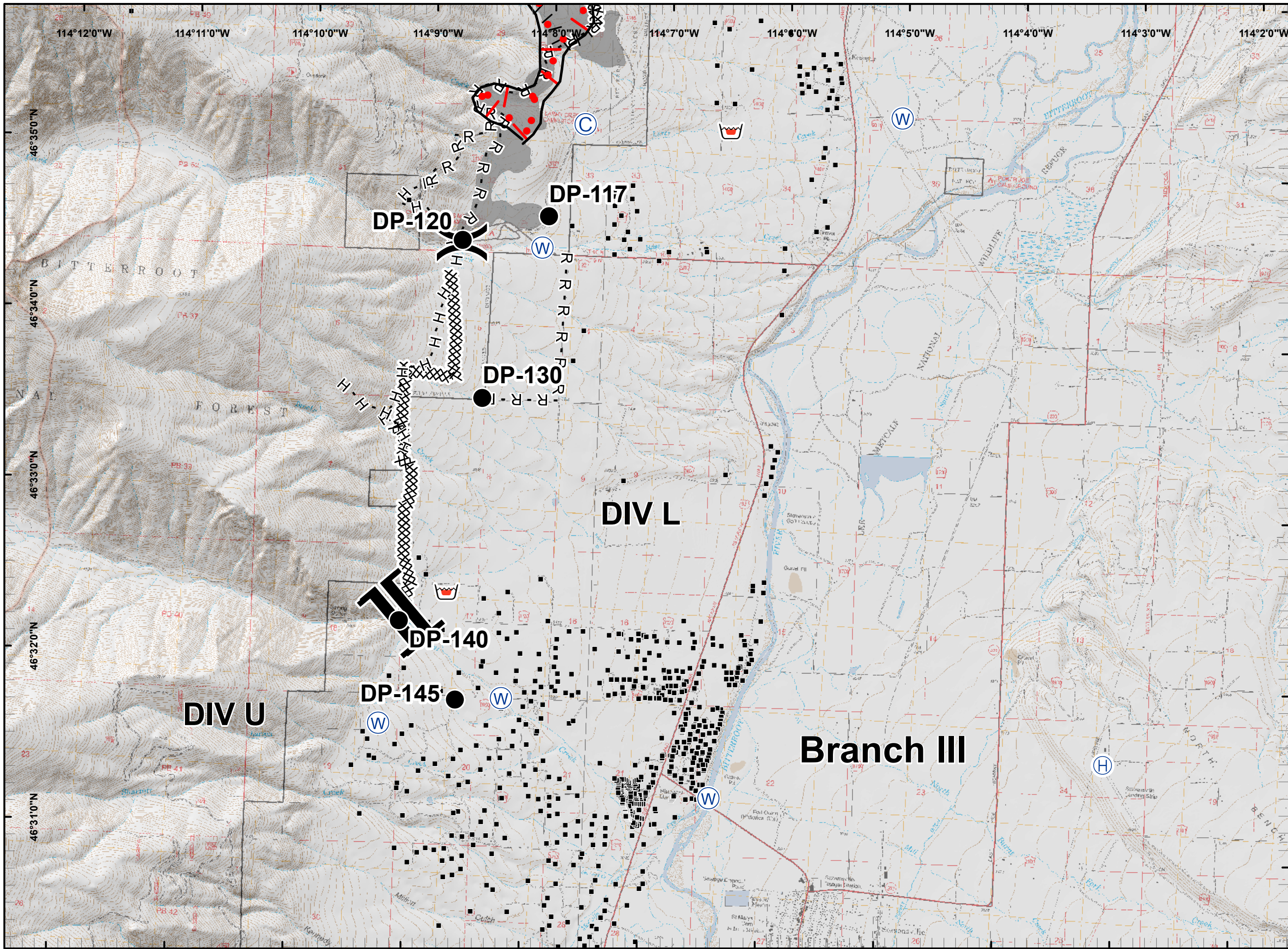
Incident Management Team  
 Northern Rockies  
 Greg Poncin's National Incident Management Team

0 0.3 0.6 1.2 Miles





**Lolo Peak Fire**  
 MT-LNF-001288  
 IAP Map, Day Shift  
 Page 8 Div L  
 8/29/2017



- Structures
- XXXXX Completed Dozer Line
- H - H Completed Hand Line
- R - R Road as Completed Line
- ||| Proposed Burnout
- |● Active Burnout
- Wildfire Daily Fire Perimeter
- ▭ Montana Idaho State Boundary

**Incident Management Team**  
 Northern Rockies  
 Greg Poncin's National Incident Management Team

0 0.3 0.6 1.2 Miles