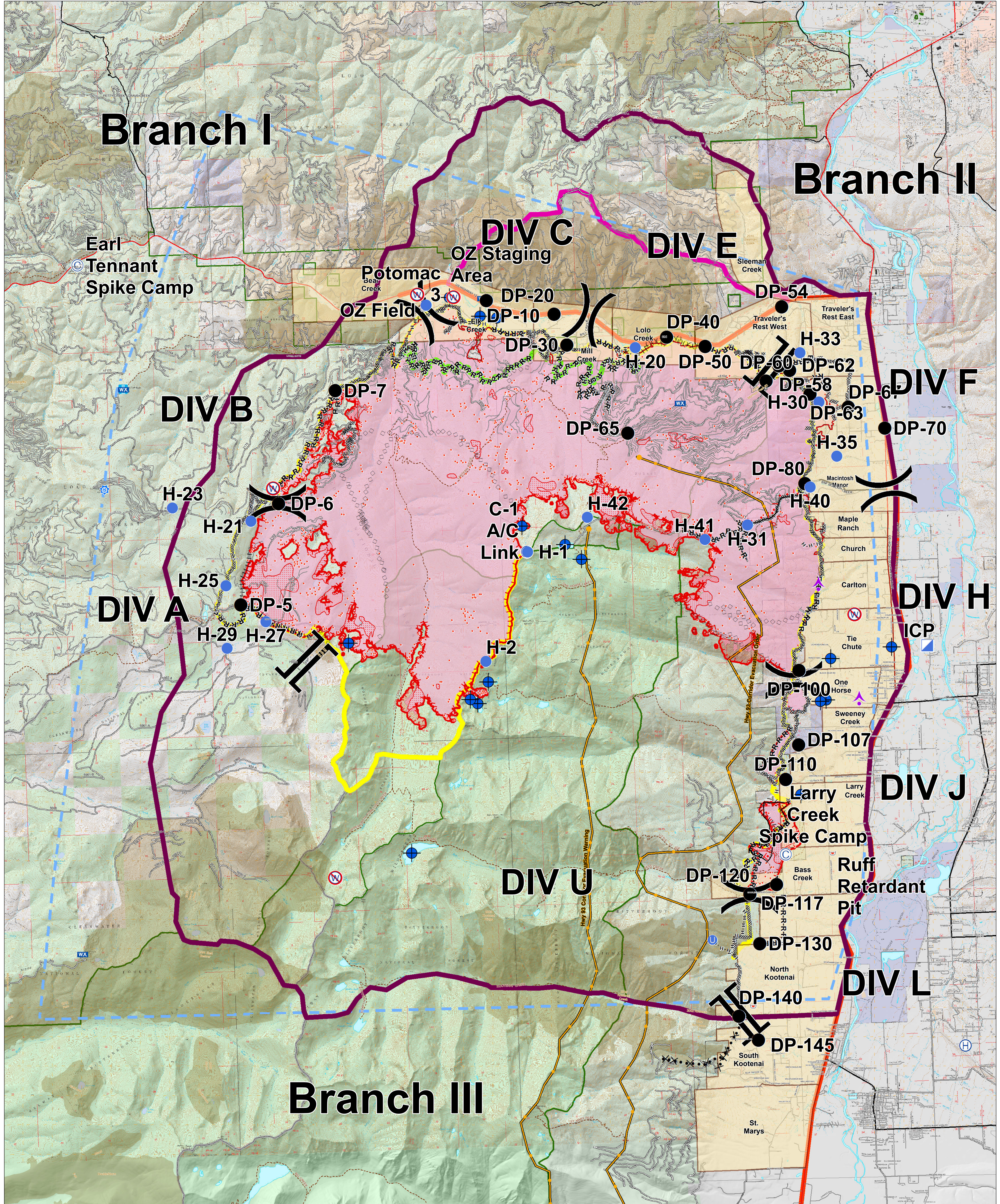


Branch I

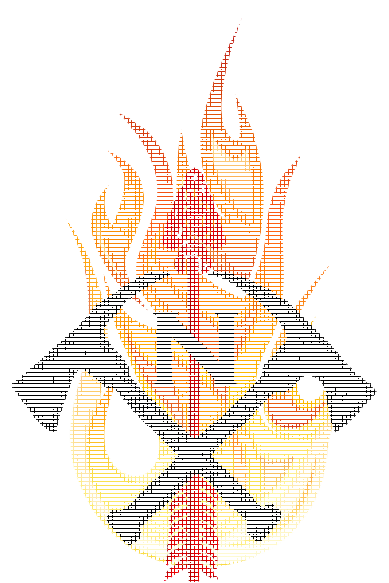
Branch II

Branch III



Lolo Peak Fire Briefing Map

MT-LNF-001288
August 30, 2017
39,461 Acres



- | | | | | | |
|---------------------|---------------------------|----------------------------|------------------------------|---------------------------------|---------------------|
| ● Drop Point | U Unimproved Landing Area | Branch Break | ◇ Aerial Retardant Drop | — Forest Roads | ■ Other Federal |
| ● Helispot | ICP | ⚙ Sheriff Repeater | ◇ Air Tanker Retardant | — Other Roads | ■ State |
| ● Dip Site | 📡 Lookout | ⚙ Completed Dozer Line | (X) Ridge/Geographic Feature | — Primary Line | ■ US Forest Service |
| ● Aerial Hazard | 📡 Mobile Weather Unit | ⚙ Completed Hand Line | 📡 Planning Area | — Alternate Line | |
| ● Camp | 📡 Repeater | R-R Road as Completed Line | 📡 TFR | — Contingency Line | |
| ● Retardant/Mud Pit | 📡 Retardant/Mud Pit | Proposed Burnout | 📡 Management Action Points | — Emergency Line | |
| ● Helibase | ⌋ Division Break | ⚙ Active Burnout | — Completed Line | --- Trails | |
| | | ⚙ Proposed Dozer Line | — Uncontrolled Fire Edge | — Wildfire Daily Fire Perimeter | |
| | | ⚙ Planned Fire Line | — EvacuationAreas14 | — Fire History 1980-Present | |
| | | | — Highways | — State Boundary | |
| | | | — County Roads | — Wilderness | |

