

Branch I

Lolo Creek

Sleeman Creek

Traveler's Rest West

Traveler's Rest East

DIV F

Branch II

Macintosh Manor

Maple Ranch

Church

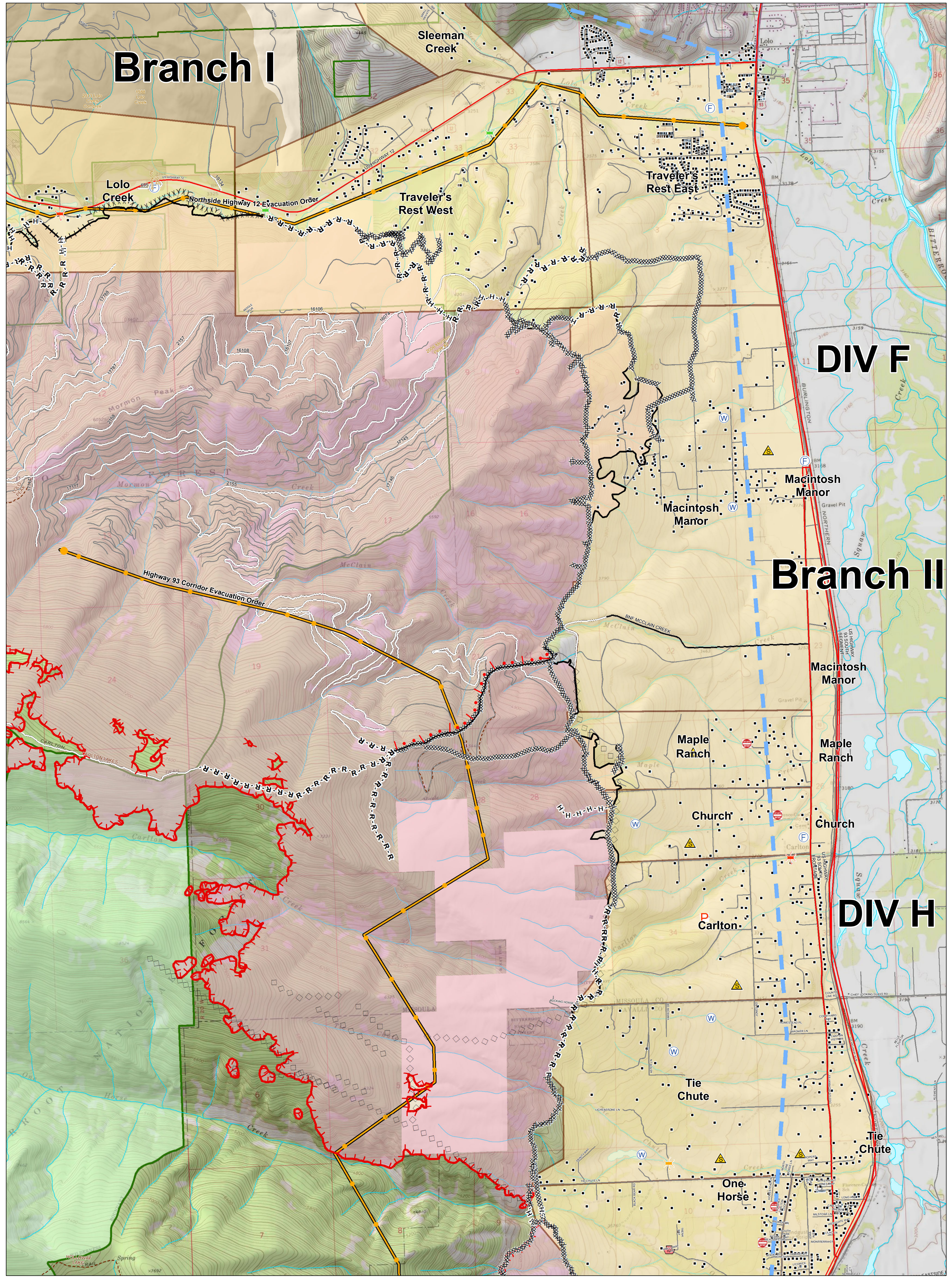
DIV H

Church

Tie Chute

One Horse

Tie Chute



**Lolo Peak Fire
Structure Protection
Highway 93 North**
MT-LNF-001288
August 31, 2017
39,461 Acres



- | | | | | | |
|-------------------------------|------------------------|--------------------------|----------------|-------------------------------|---------------------------|
| Bridge, Acceptable | Zoo | Completed Dozer Line | Completed Line | Structures | Wilderness |
| Bridge, Caution | Completed Hand Line | Uncontrolled Fire Edge | TFR | Evacuation Areas 14 | Trails |
| Bridge, Hazardous | Road as Completed Line | Management Action Points | Highways | Wildfire Daily Fire Perimeter | Fire History 1980-Present |
| Dangerous: Threatening People | Proposed Burnout | Active Burnout | County Roads | Streams | Waterbodies |
| FD Staging, FD Staging | Aerial Retardant Drop | Air Tanker Retardant | Forest Roads | State Boundary | Forest Boundaries |
| Junk Yard Hazards | Water Source | | Other Roads | | |