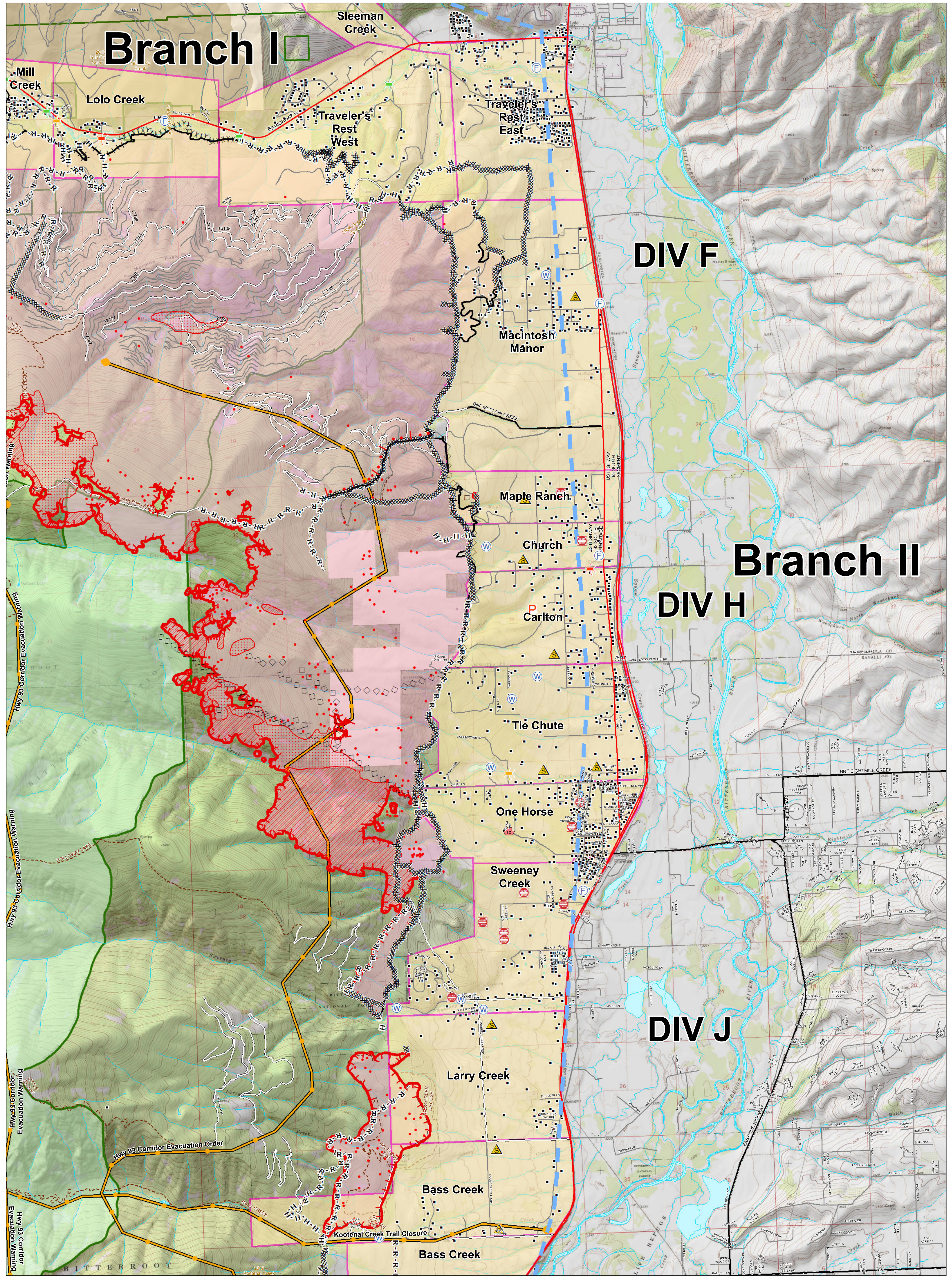


# Branch I



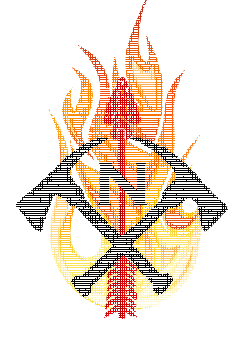
## Lolo Peak Fire Structure Protection Highway 93 North

MT-LNF-001288  
September 1, 2017  
41,339 Acres



IR data from 8/31/2017 at 2351 hrs.

- IR Isolated Heat Sources
- ▨ IR Intense Heat
- ▤ IR Scattered Heat



- ⚡ Bridge, Acceptable
- ⚠ Bridge, Caution
- ⚡ Bridge, Hazardous
- ⚠ Dangerous: Threatening People
- Ⓜ FD Staging, FD Staging
- ⚠ Junk Yard Hazards
- ⚠ Safety Zone
- Ⓜ Water Source
- Ⓜ Zoo
- ⚡ Completed Dozer Line
- H - H - Completed Hand Line
- R - R - Road as Completed Line
- ⋮ Proposed Burnout
- ⚠ Active Burnout
- ⚡ Planned Fire Line
- ◇◇ Aerial Retardant Drop
- ◇◇ Air Tanker Retardant
- (XXX) Ridge/Geographic Feature
- ⚡ Completed Line

- ⚡ Uncontrolled Fire Edge
- TFR
- ⚡ Management Action Points
- ⚡ Highways
- ⚡ County Roads
- ⚡ Forest Roads
- ⚡ Other Roads
- ⚡ Structures
- ⚡ EvacuationAreas14
- ⚡ Trails

- ▨ Wildfire Daily Fire Perimeter
- ▨ Fire History 1980-Present
- ⚡ Streams
- ⚡ Waterbodies
- ⚡ State Boundary
- ⚡ Forest Boundaries
- ⚡ Wilderness